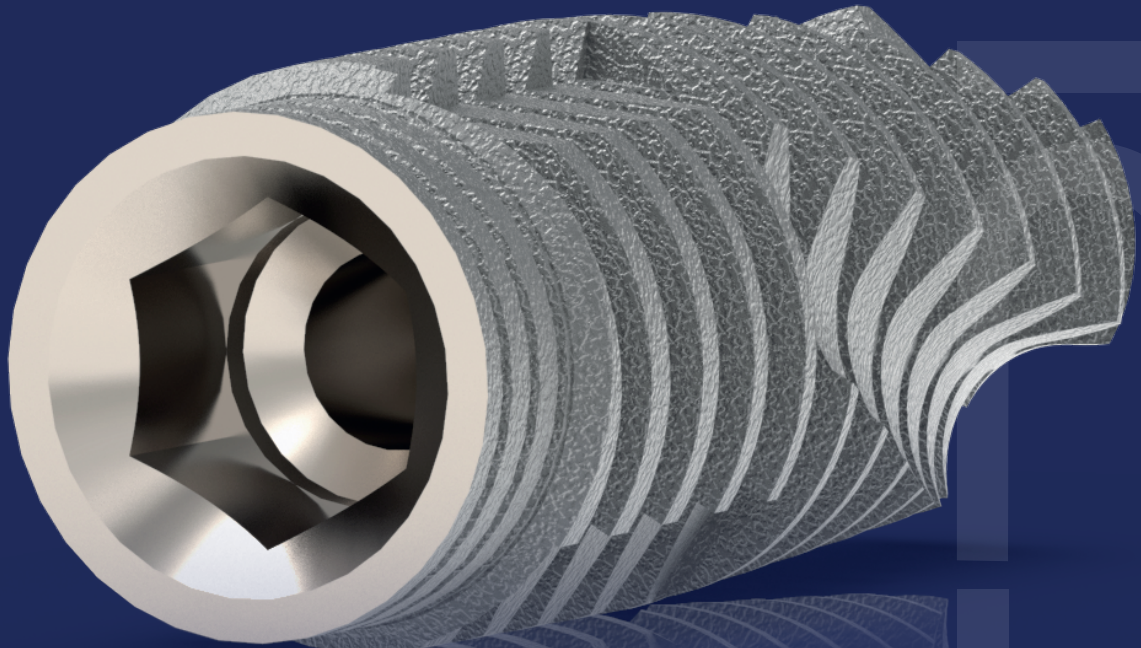
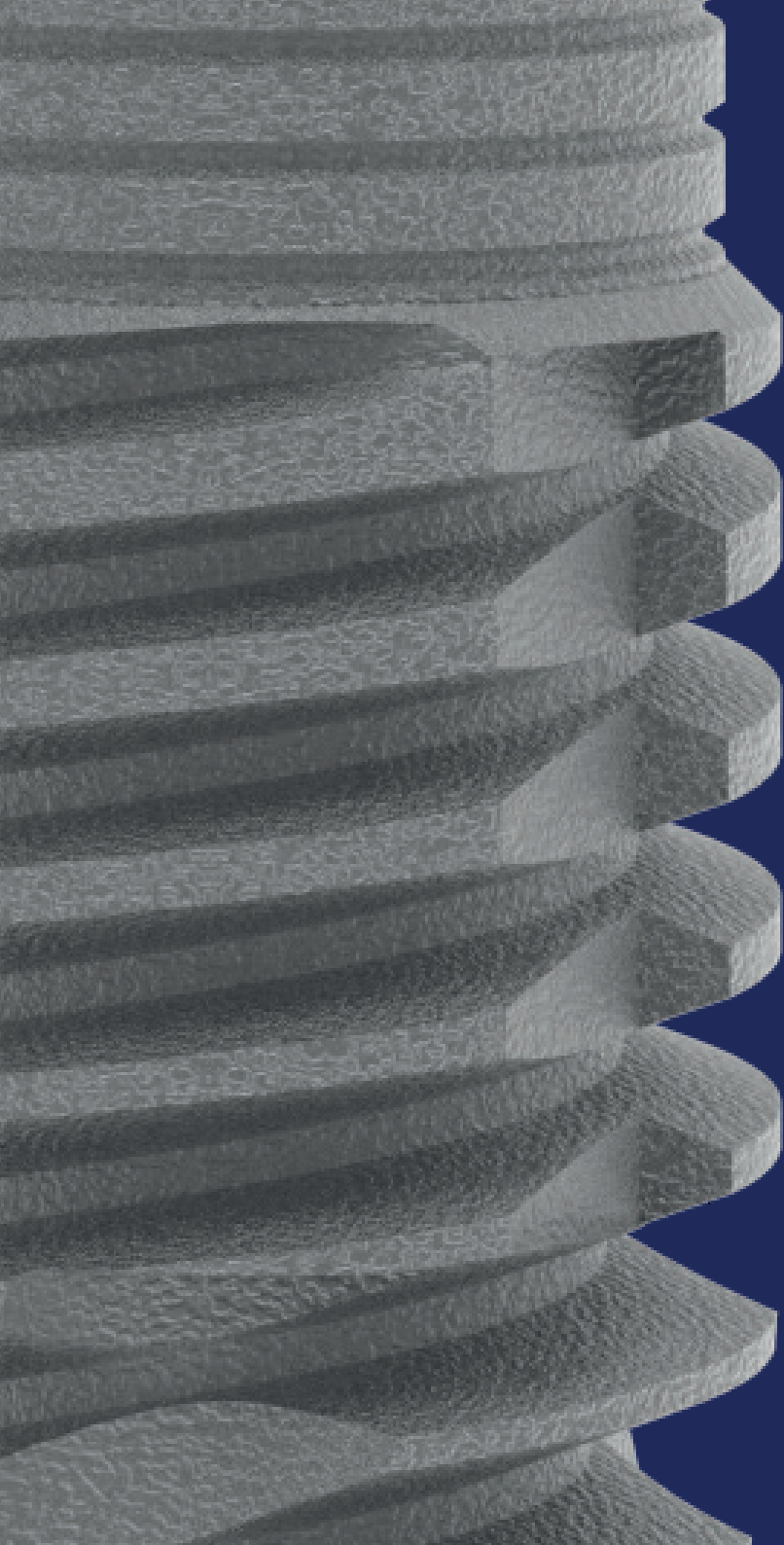


TRIO

IMPLANT

Masterpiece of Arch





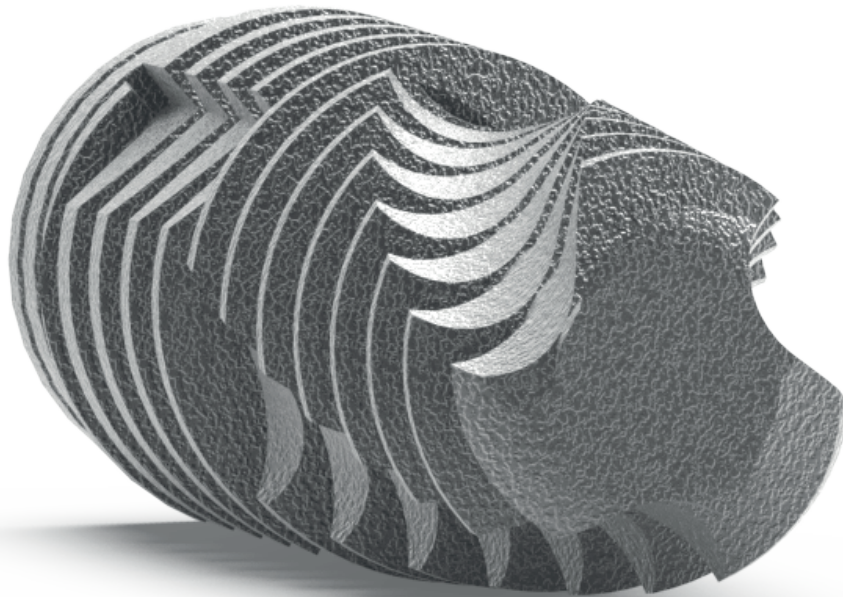
TRIO

Masterpiece of Arch

Trio Implant - A Masterpiece of Arch

Following years of research and development, doctor's clinical data collection and years of market experience, Alfa Gate is proud and excited to present our revolutionary implant - **The Trio Implant**.

Trio is designed to achieve incomparable superior primary stability in all bone types. Moreover, the unique cylindrical implant thread design, along with its conical body shape accomplishes unwavering reliable results in immediate loading cases. In addition, the coronal implant design maintains peace of mind with stress-reducing in the cortical bone area.



O
R
E

Why Trio?



Coronally Reduced diameter for less bone stress in the cortical bone.



Unique thread design cuts and condenses the bone to increase implant primary stability.



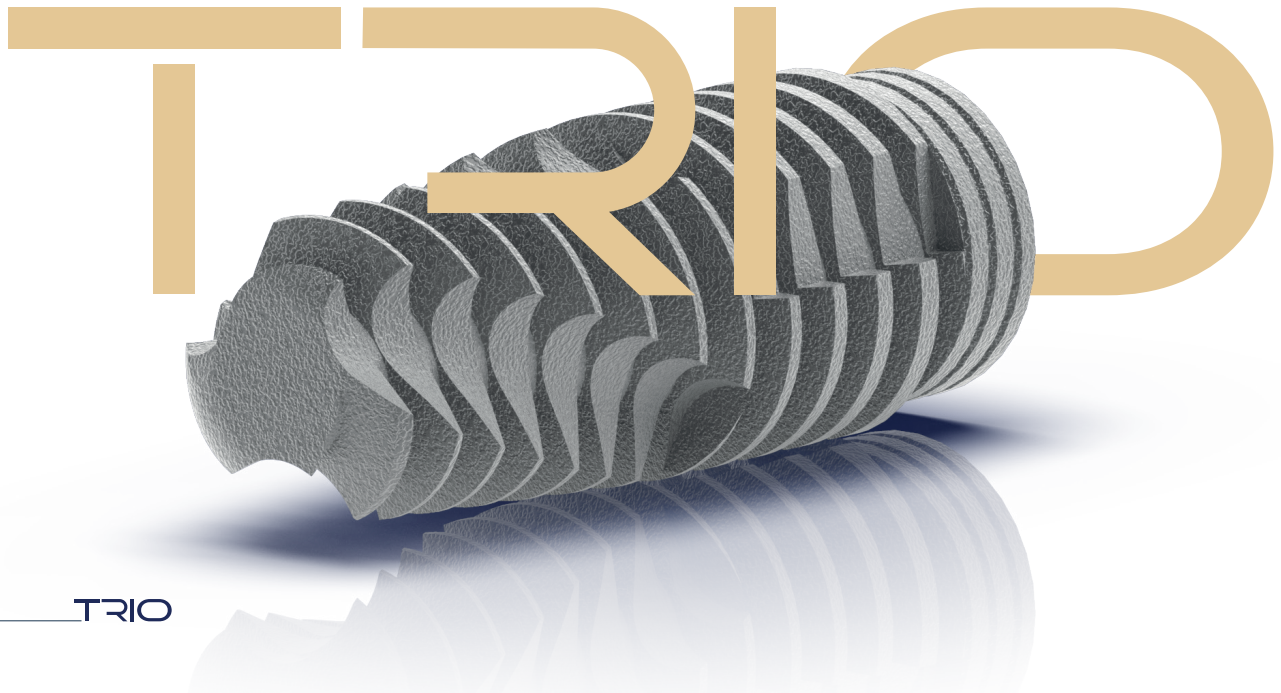
Single restorative platform for Internal Hex implants 2.42mm, compatible for all implant diameters with multiple restorative options.



Drilling grooves enable cutting through the cortical bone for efficient insertion and **torque equalizer**.



The **active apex's** continued threads reaching the apex are ideal for immediate implants in immediate loading cases.



Body Characteristics

Single Restorative Platform

Single restorative platform in all implant diameters

Coronally Reduced Diameter

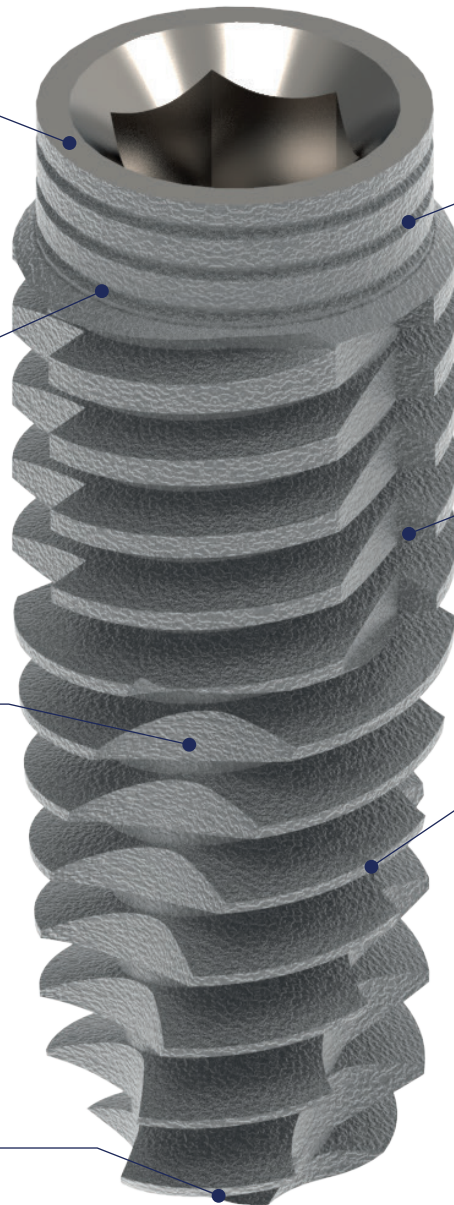
Coronally Reduced diameter for less bone stress in the cortical bone

Triple Fluted Define Bone compression

Triple flutes to improve distribution of axial forces, thus defining bone compression

Flat Active Apex

A cutting flat active apex is ideal for immediate implants



Triple Micro Rings increase BIC

Triple Micro threads that enhance bone formation and increase BIC

Triple Drilling Grooves Enable Efficient Torque Equalization

Drilling grooves enables cutting through the cortical bone for efficient insertion and torque equalization

Unique Thread Design

Unique thread design to cut and condense the bone to increase implant primary stability

TRIO
IMPLANT

Masterpiece of Arch



SLA Surface

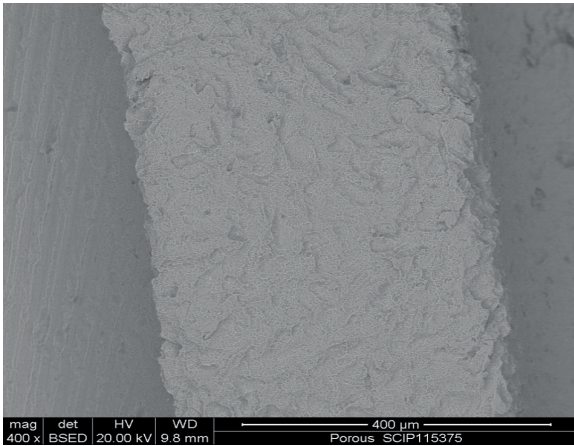


Fig1: An area at x400 magnification from the center of the implant.

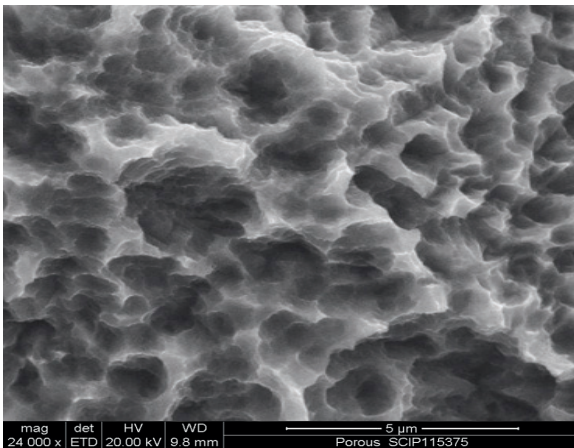


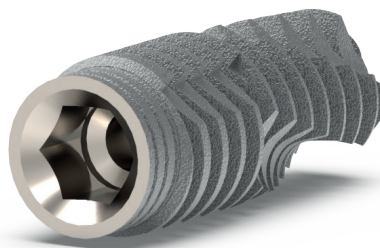
Fig2: A higher magnification of the area from Fig1

Trio implant has the cleanest surface technology to increase the effectiveness of successful long-term osseointegration

The unique implant topography made of micro and nano-structures leads to great bone anchoring and biomechanical stability due to the BIC (Bone to Implant Contact).

* According to research conducted by the Technion Institution that authenticates this claim in 2017.

Size Chart



Diameter	Length							
	6mm	8mm	10mm	11.5mm	13mm	16mm	19mm	
Ø3.75	DFCI6375	DFCI8375	DFCI10375	DFCI115375	DFCI13375	DFCI16375	DFCI19375	
Ø4.2	DFCI642	DFCI842	DFCI1042	DFCI11542	DFCI1342	DFCI1642	DFCI1942	
Ø4.7	DFCI647	DFCI847	DFCI1047	DFCI11547	DFCI1347	DFCI1647	—	
Ø5.2	DFCI652	DFCI852	DFCI1052	DFCI11552	DFCI1352	DFCI1652	—	



Handling

Alfa Gate implant carrier makes it possible to insert all implants regardless of the platform, with a single set of keys.

Hand-piece insertion



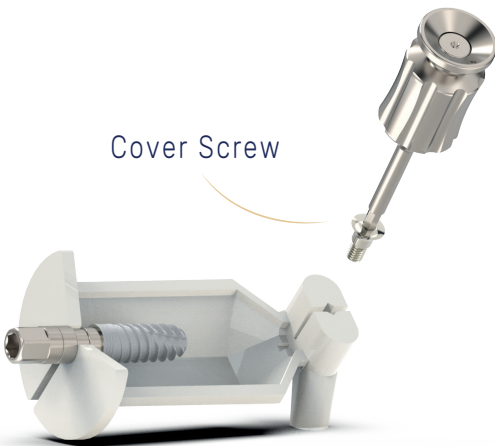
The Carrier must be used with torque insertion up to 35Ncm!



Manual insertion



Cover Screw

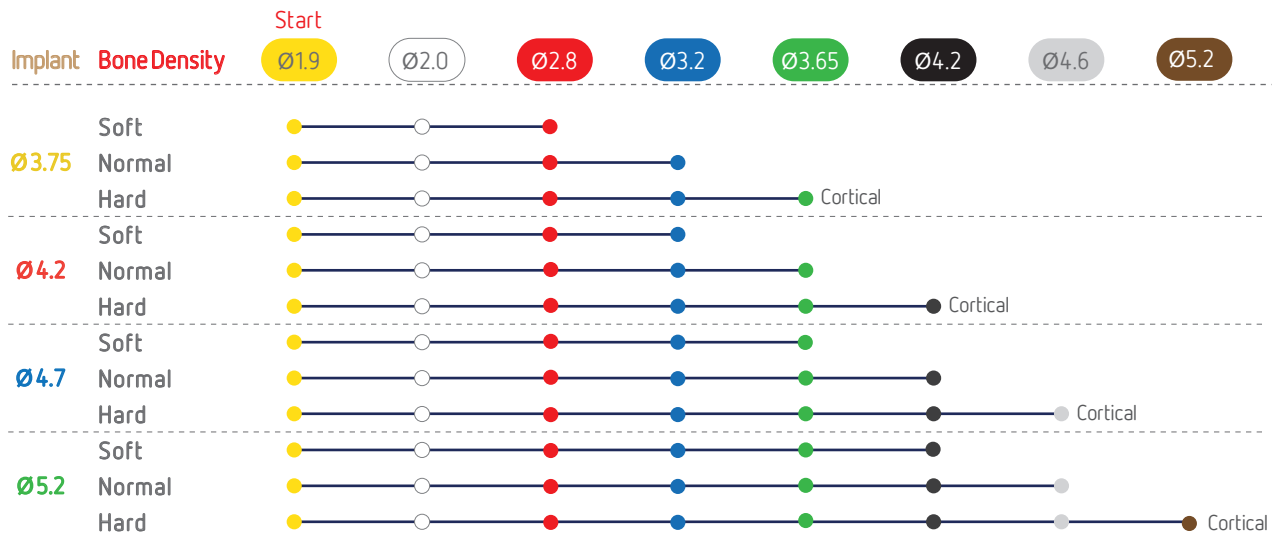
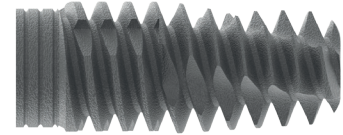


*The final insertion is done with the Internal Hex 2.42mm insertion key!

*Important: to ensure correct and safe transfer of the implant and optimal insertion, the implant insertion key must be fully inserted into the upper hexagon of the carrier.



Drilling Protocol Trio Implant

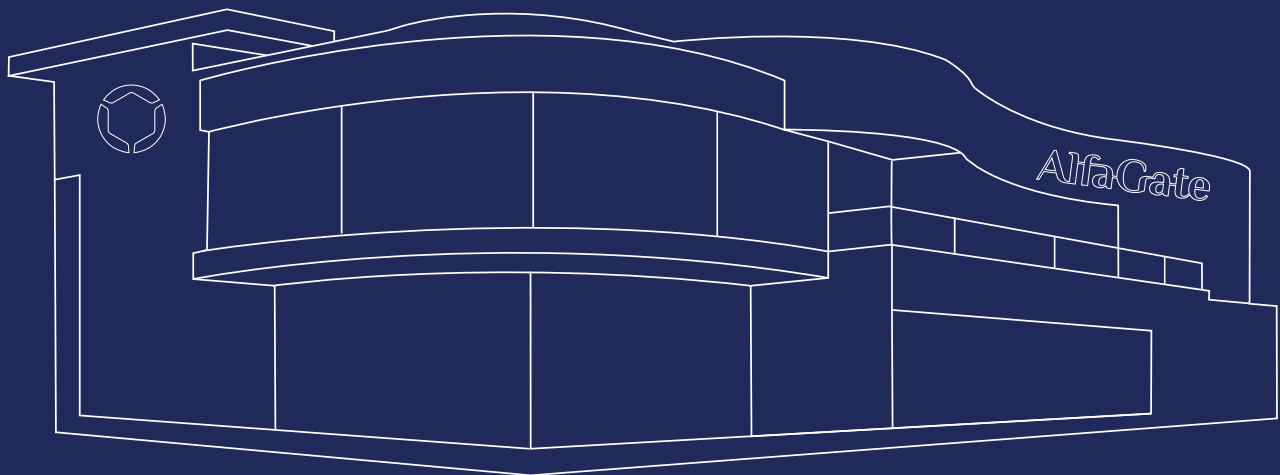


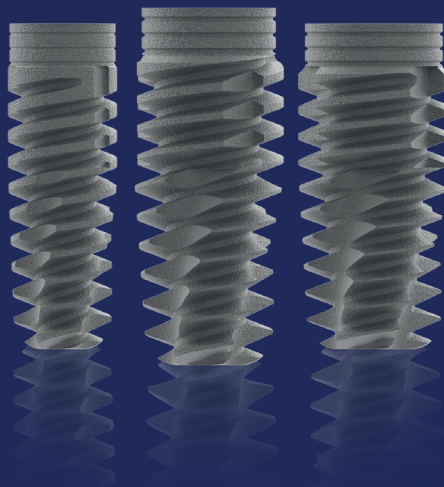
*The Alfa Gate drilling protocol is recommended for most clinical situations, but cannot replace the judgment of the surgeon's and professional experience.

Company Profile

Alfa Gate has 25 years of global success in manufacturing and supplying high-quality dental implants and prosthetic solutions curated to all dentists.

The effectiveness and superior performance of our products are a result of successful R&D that ensures the greatest quality.





Alfa Gate adheres to the most stringent international standards,
complying with EN:ISO 13485:2003 and ISO 9001:2008

Product availability may vary between countries.



www.alfa-gate.com