



# Index

4	Company Profile
5	Our Advantages
6-25	Implants
26-41	Prosthetics
42-45	CAD/CAM
50-61	Surgical Kits & Instrucments
62	Alfa Bone
63	Alfa Motor
64-67	Alfa Guide
68-73	Drilling Protocols

[alfa-gate.com](http://alfa-gate.com)



**DETERMINED  
TO LEAD**

# Company Profile

Alfa Gate has more than 25 years of global success in manufacturing and supplying high-quality dental implants and prosthetic solutions curated to all dentists.

Our implant assortment meticulously provides technological and revolutionary dental solutions suited for dentists to achieve the most optimal results. We offer innovative dental implants, CAD/CAM solutions, Alfa Guide Surgical System, Single and Multi-Unit, and every prosthetic variation.

We emphasize our collaboration with dentists by offering tailored education programs at Alfa Gate Academy, in addition to consultancy and support services whenever needed.

Alfa Gate strives for excellence by modernizing the dental industry with continuous product innovations. The effectiveness and premium-quality performance of our products are a result of successful R&D that ensures the highest quality. Our brand is available in over 50 countries worldwide including, the USA, Latin America, Eastern Europe, Central Europe, the Middle East and Asia.



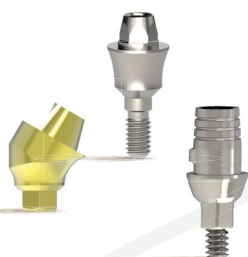
# Our Advantages



Bioactive implant has a unique surface as the CaP technology revolutionized the dental world by reducing **healing time** to 6- 10 weeks.



Our Team consists of **experienced dentists** developing products catered to doctors' best interests.



**Wide variety** of prosthetic options to complete every restorative procedure.



A single key for our **entire range** of prosthetic parts.



Numerous scientific studies including clinical trials conducted in established European universities **authenticate** our claims.



Alfa Gate Surgical Kits offer the **exact tools needed** for every case in a convenient and accurate layout.

# Implants

## Internal Hex

8-11 - Bioactive

12-13 - Trio

14-15 - MAX

16-17 - Porous

## Narrow Implant

18-19 - S-line

## Conical Connection

20-21 - M+

## One-Piece

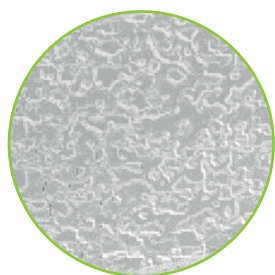
22 - Patro



# Bioactive

## SCI Implant

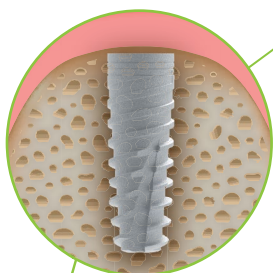
Alfa Gate revolutionizes the dental world with Bioactive implant **hydrophilic technology** that has a proven **higher success rate**. Bioactive is the ideal choice for **compromised** cases as it proved to have an **expedited recovery period** predominantly in challenging cases.



Bioactive has a completely resorbable **calcium-phosphate** surface.



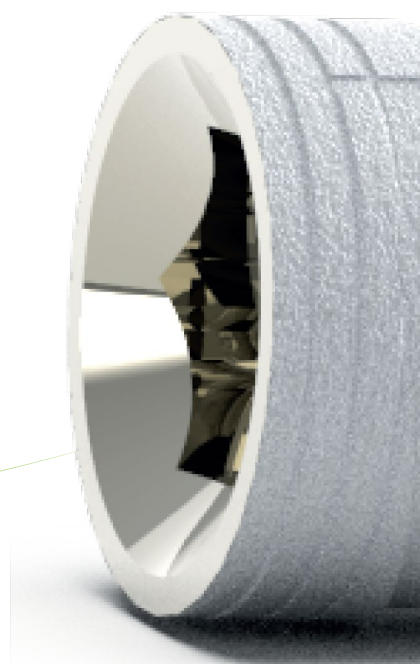
The implant's **hydrophilic** surface attracts the stem cells.



The **osseinductive** characteristics of the surface results in successful osseointegration and improved implant anchoring.



Bioactive's outstanding characteristics accelerate healing time up to **6-10 weeks** instead of 3-6 months post-operation.





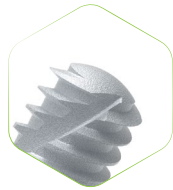
## Body Characteristics



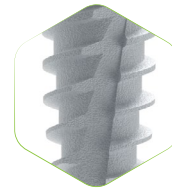
Conical Body



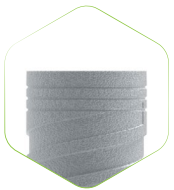
Single Platform



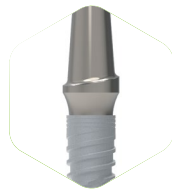
Domed Apex



Variable Thread Design



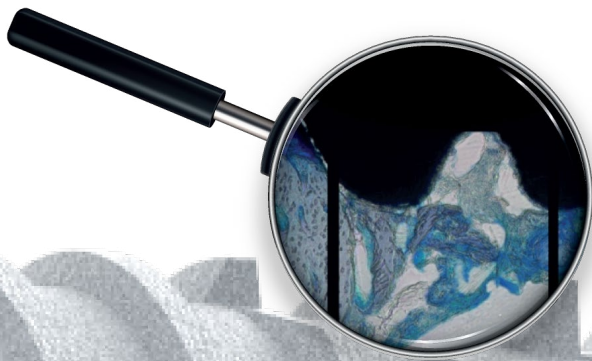
Micro-rings



Switching Platform



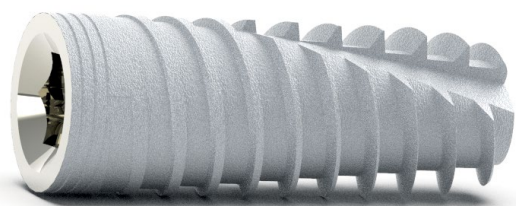
Internal Hex Connection with Conical Sealing Design
















The body's CaP Hydrophilic surface is **biocompatible** for ultimate results!

# Bioactive

## SCI Implant



**Material:** Titanium Alloy Ti6Al4V ELI | CaP  
**Item includes:** Cover screw and implant carrier  
**Connection:**  Screw type implant 2.42mm internal hex  
**Surface:** Sand blasting and Acid-Etching-Bioactive surface CaP

Diameter	Length	Length					
		6mm	8mm	10mm	11.5mm	13mm	16mm
 		-	SCI833	SCI1033	SCI11533	SCI1333	SCI1633
 		-	SCI8375	SCI10375	SCI115375	SCI13375	SCI16375
 		SCI642	SCI842	SCI1042	SCI11542	SCI1342	SCI1642
 		SCI647	SCI847	SCI1047	SCI11547	SCI1347	SCI1647
 		SCI652	SCI852	SCI1052	SCI11552	SCI1352	SCI1652
 		SCI66	SCI86	SCI106	SCI1156	SCI136	-

## Scientific Research:

### 1<sup>st</sup> research and claim:

Claim: Alfa Gate Bioactive Implant increases the bone implant contact (BIC) by 54.9% compared to SLA Surface implants.

“The results of this study show for the first time that calcium-phosphate coated surfaces on supracrestal inserted implants have vertical osteoconductive characteristics and increase the bone-implant contact at the implant shoulder significantly in a rabbit model. In clinical long-term settings, these implants may contribute to a better vertical bone height.”

Schiegnitz E, Palarie V, Nacu V, Al-Nawas B, Kämmerer PW. Vertical osteoconductive characteristics of titanium implants with calcium-phosphate-coated surfaces - a pilot study in Rabbits. *Clinical Implant Dentistry and Related Research*. 2014;16(2):194-201. doi:10.1111/ j.1708-8208.2012.00469.x

### 2<sup>nd</sup> research and claim:

Claim: Alfa Gate's Bioactive Implant shows an improved early osseointegration compared with commercially pure titanium surfaces.

“Our results are in consensus with other studies that showed an improved early osseointegration of CaP coatings when compared with commercially pure titanium surfaces.”

Schiegnitz E, Palarie V, Nacu V, Al-Nawas B, Kämmerer PW. Vertical osteoconductive characteristics of titanium implants with calcium-phosphate-coated surfaces - a pilot study in Rabbits. *Clinical Implant Dentistry and Related Research*. 2014;16(2):194-201. doi:10.1111/ j.1708-8208.2012.00469.x

### 3<sup>rd</sup> research and claim:

Claim: : Bioactive implant's achieves greater bone formation in a short period of time.

“In total, ISQ mean values increased after 6 months were higher than after implant placement. Periosteal values increased in the period of the first 6 months and remained constant afterwards.”

Palarie V, Bicer C, Lehmann KM, Zahalka M, Draenert FG, Kämmerer PW. Early outcome of an implant system with a resorbable adhesive calcium-phosphate coating—a prospective clinical study in partially dentate patients. *Clinical Oral Investigations*. 2011;16(4):1039-1048. doi:10.1007/s00784-011-0598-8.

**Vertical Osteoconductive Characteristics of Titanium Implants with Calcium-Phosphate-Coated Surfaces – A Pilot Study in Rabbits**  
 EK Schiegnitz, MD<sup>1</sup>, Victor Kolarik, DMD<sup>2</sup>, Christa Nöcker, MD, PhD<sup>3</sup>, Rüdiger Al-Nawas, MD, PhD<sup>4</sup>, Peter W. Kämmerer, MD, PhD<sup>5</sup>

**ABSTRACT**  
 Objectives: Comparative characteristics of different implant surface coatings are in the focus of current research. The aim of the present study was to compare the vertical osteoconductivity of the implant shoulder of resorptively treated calcium phosphate-coated implants (CaP) with conventional sand-blasted and etched (SLA) implants in a rabbit model.

**Methods and Results:** SLA-CaP and SLA-implants were inserted bilaterally in the maxilla of four rabbits in a split-mouth design. The implants were placed 1 mm respectively 2 mm from the SLA and SLA implant shoulder. The percentage of bone from the PFT as well as from implant contact (BIC) was determined.

**Results:** After 6 weeks, mean bone height was significantly higher at the shoulder of the SLA than at both subcrestal implants (77%). PFT was significantly higher in SLA-CaP implants (11.2%) vs. SLA (6.4%, p = 0.004). BIC was significantly higher in the SLA-CaP implants (17%) vs. SLA (9.4%, p = 0.014) as well.

**Conclusions:** The results of this study show for the first time that calcium-phosphate coated surfaces on supracrestal inserted implants have vertical osteoconductive characteristics and increase the bone-implant contact at the implant shoulder significantly in a rabbit model in a split-mouth design. **KEY WORDS:** animal study, calcium phosphate, implant, osteoconductive characteristics



**Vertical Osteoconductive Characteristics of Titanium Implants with Calcium-Phosphate-Coated Surfaces – A Pilot Study in Rabbits**  
 EK Schiegnitz, MD<sup>1</sup>, Victor Kolarik, DMD<sup>2</sup>, Christa Nöcker, MD, PhD<sup>3</sup>, Rüdiger Al-Nawas, MD, PhD<sup>4</sup>, Peter W. Kämmerer, MD, PhD<sup>5</sup>

**ABSTRACT**  
 Objectives: Comparative characteristics of different implant surface coatings are in the focus of current research. The aim of the present study was to compare the vertical osteoconductivity of the implant shoulder of resorptively treated calcium phosphate-coated implants (CaP) with conventional sand-blasted and etched (SLA) implants in a rabbit model.

**Methods and Results:** SLA-CaP and SLA-implants were inserted bilaterally in the maxilla of four rabbits in a split-mouth design. The implants were placed 1 mm respectively 2 mm from the SLA and SLA implant shoulder. The percentage of bone from the PFT as well as from implant contact (BIC) was determined.

**Results:** After 6 weeks, mean bone height was significantly higher at the shoulder of the SLA than at both subcrestal implants (77%). PFT was significantly higher in SLA-CaP implants (11.2%) vs. SLA (6.4%, p = 0.004). BIC was significantly higher in the SLA-CaP implants (17%) vs. SLA (9.4%, p = 0.014) as well.

**Conclusions:** The results of this study show for the first time that calcium-phosphate coated surfaces on supracrestal inserted implants have vertical osteoconductive characteristics and increase the bone-implant contact at the implant shoulder significantly in a rabbit model in a split-mouth design. **KEY WORDS:** animal study, calcium phosphate, implant, osteoconductive characteristics

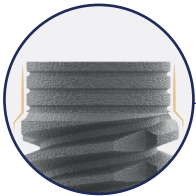
# TRIO

## IMPLANT

Alfa Gate is proud and excited to present our revolutionary and incomparable TRIO Implant. The implant proved to be a successful solution suitable for all bone types that achieves superior primary stability.

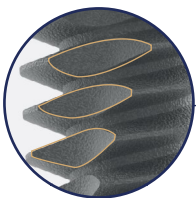
### Triple Micro Rings increase BIC

Triple Micro Rings that enhance bone formation and increase BIC



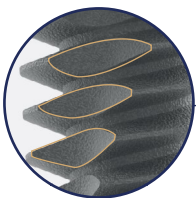
### Coronally Reduced Diameter

Coronally Reduced diameter for less bone stress in the cortical bone



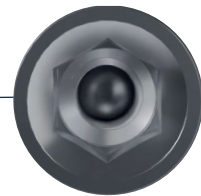
### Triple Flutes Define Bone Compression

Triple flutes to improve distribution of axial forces, thus defining bone compression



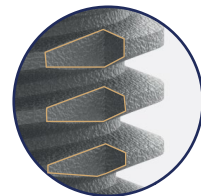
### Implant Platforms

Standard Platform for all implant diameters 2-42mm.



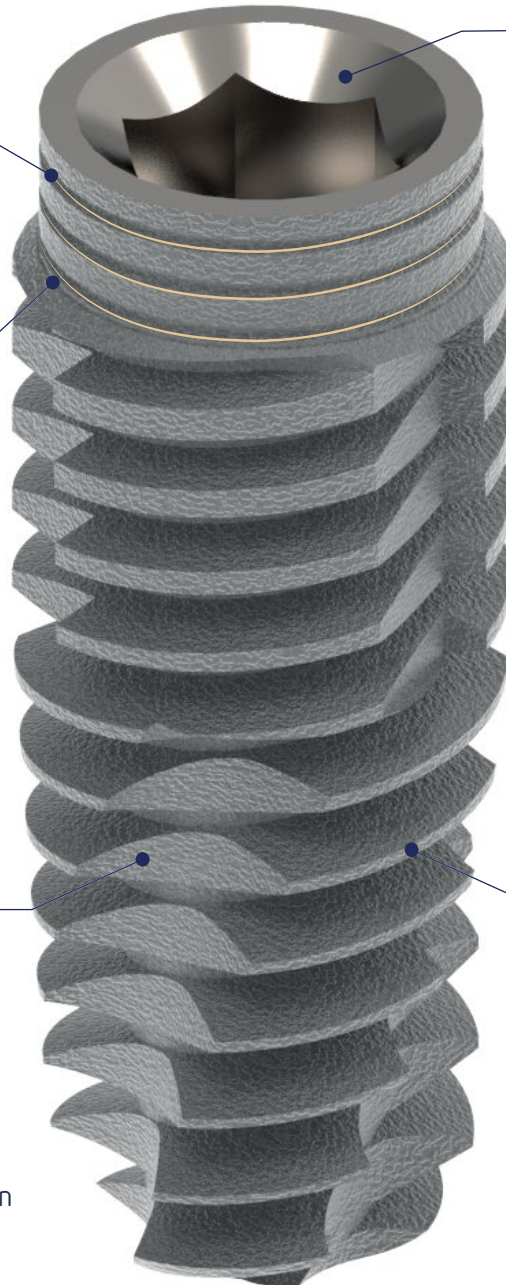
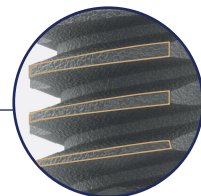
### Triple Drilling Grooves

Drilling grooves enables cutting through the cortical bone for efficient insertion and torque equalization



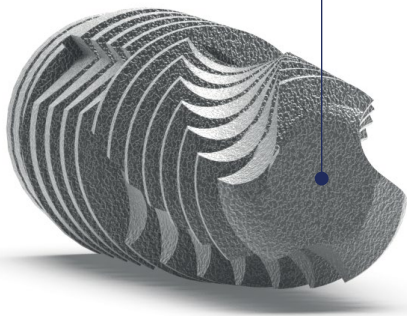
### Unique Thread Design


Unique thread design to cut and condense the bone to increase implant primary stability











### Flat Active Apex

A cutting flat active apex is ideal for immediate implants

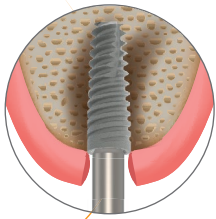


Material: Titanium Alloy Ti6Al4V ELI  
 Item includes: Cover screw and implant carrier  
 Connection:  Screw type implant 2.42mm internal hex  
 Surface: Sand blasting and Acid-Etching

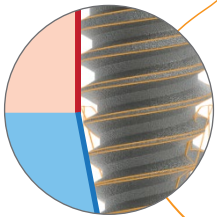
Diameter	Length	Length						
		6mm	8mm	10mm	11.5mm	13mm	16mm	19mm
 		DFCI6375	DFCI8375	DFCI10375	DFCI115375	DFCI13375	DFCI16375	DFCI19375
 		DFCI642	DFCI842	DFCI1042	DFCI11542	DFCI1342	DFCI1642	DFCI1942
 		DFCI647	DFCI847	DFCI1047	DFCI11547	DFCI1347	DFCI1647	
 		DFCI652	DFCI852	DFCI1052	DFCI11552	DFCI1352	DFCI1652	

# MAX

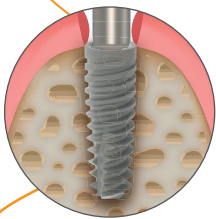
Implant



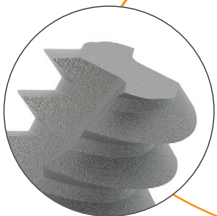
MAX is the best implant for **immediate placement**.



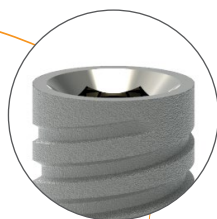
The unique Cycon™ body consists of **combined cylindrical and conical shapes**.



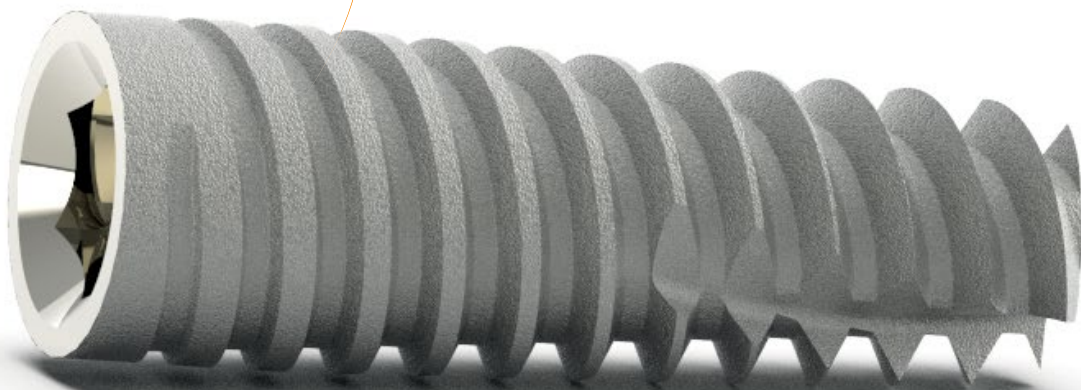
Thus, MAX is designed to achieve **superior primary stability**



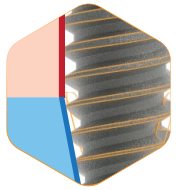
The **flat cutting apex** assures fast and soft insertion in the bone.



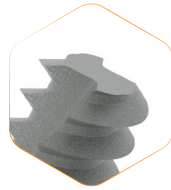
The implant internal hex connection has a **single**



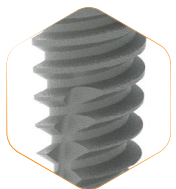
## Body Characteristics



Combined Cylindrical and Conical Body



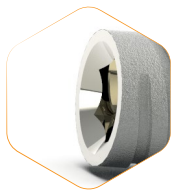
Flat and Cutting Apex



Variable Thread Design




Single Platform



Internal Hex Connection with Conical Sealing Design

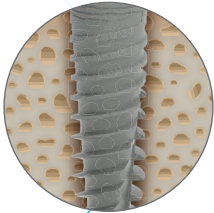


Material: Titanium Alloy Ti6Al4V ELI  
 Item includes: Cover screw and implant carrier  
 Connection:  Screw type implant 2.42mm internal hex  
 Surface: Sand blasting and Acid-Etching

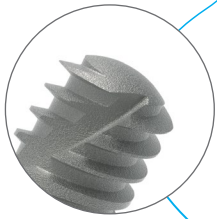
Diameter	Length	6mm	8mm	10mm	11.5mm	13mm	16mm
		 	-	MX833	MX1033	MX11533	MX1333
 	-	MX8375	MX10375	MX115375	MX13375	MX16375	
 	MX642	MX842	MX1042	MX11542	MX1342	MX1642	
 	MX647	MX847	MX1047	MX11547	MX1347	MX1647	
 	MX652	MX852	MX1052	MX11552	MX1352	MX1652	

# Porous

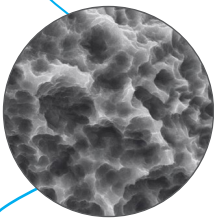
## Implant



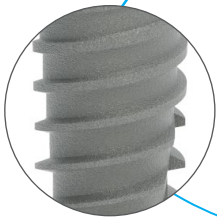
Porous implant offers a solution for a **wide range** of clinical cases.



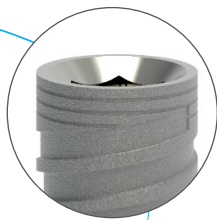
The lower implant body has a **domed apex** to allow safer dental work near sensitive anatomical structures.



In addition, it has the **cleanest surface**, which favors successful long-term osseointegration.



The implant's variable threads accomplish **excellent primary stability**.

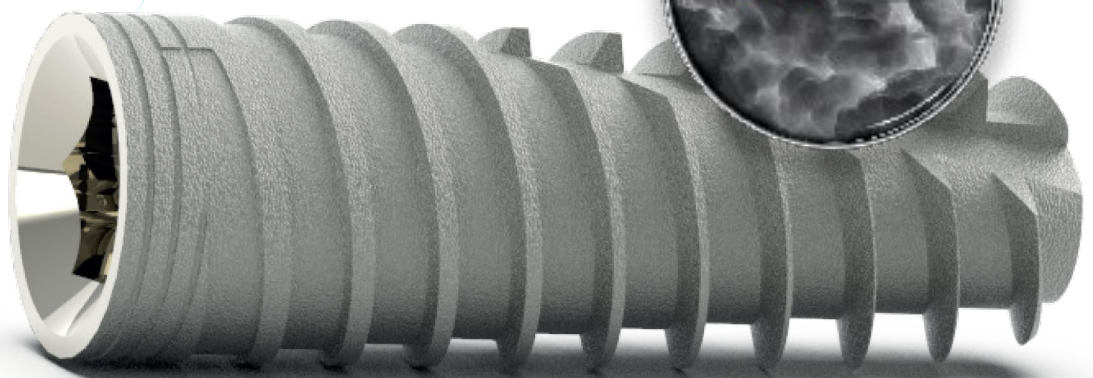


Micro rings are implemented for **maximal cortical bone preservation**.

*The purest & cleanest*



**SLA Surface**



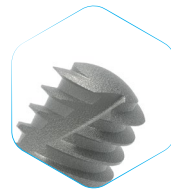




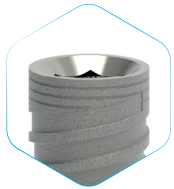
Conical Body



Single Platform



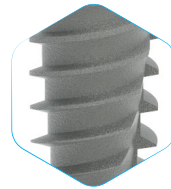
Domed Apex



Micro-rings



Switching Platform



Variable Thread Design



Internal Hex Connection with Conical Sealing Design



**Material:**  
**Item includes:**  
**Connection:**  
**Surface:**

Titanium Alloy Ti6Al4V ELI  
Cover screw and implant carrier  
Screw type implant 2.42mm internal hex  
Sand blasting and Acid-Etching

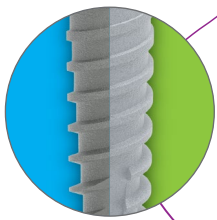
Diameter	Length	6mm	8mm	10mm	11.5mm	13mm	16mm	19mm
		Ø3.3	-	SCIP833	SCIP1033	SCIP11533	SCIP1333	SCIP1633
Ø3.75	-	-	SCIP8375	SCIP10375	SCIP115375	SCIP13375	SCIP16375	SCIP19375
Ø4.2	-	SCIP642	SCIP842	SCIP1042	SCIP11542	SCIP1342	SCIP1642	SCIP1942
Ø4.7	-	SCIP647	SCIP847	SCIP1047	SCIP11547	SCIP1347	SCIP1647	-
Ø5.2	-	SCIP652	SCIP852	SCIP1052	SCIP11552	SCIP1352	SCIP1652	-
Ø6.0	-	SCIP66	SCIP86	SCIP106	SCIP1156	SCIP136	-	-

# S-line

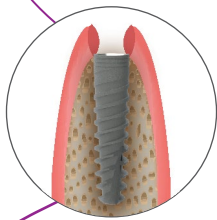
Narrow Implant



S-line is the optimal **3.0mm** diameter implant for narrow and tight ridges.



It is available in two surfaces: the unique Bioactive **CaP hydrophilic surface**, and the **SLA surface**.



The implant **eliminates** the need for bone augmentation in **narrow ridges**.



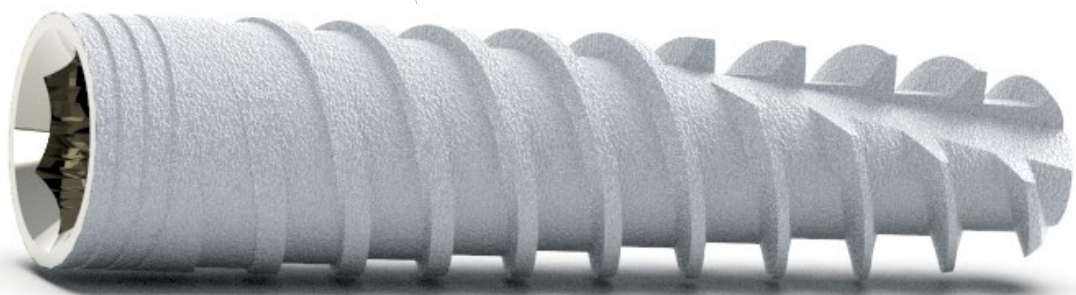
It allows for **all crown restoration** options, such as screw-retained, cemented, ball attachment and Multi-Unit.



The complete prosthetic solution for S-line implant includes **CAD/CAM** products.



The implant's connection with its internal screw is specifically designed to accomplish a **high fatigue point of 325Ncm**.

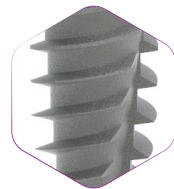




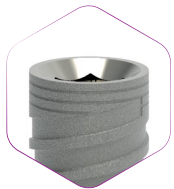
Conical Body



Domed Apex



Variable Thread Design



Micro-rings



Switching Platform




Internal Hex Connection with Conical Sealing Design

**Material:** Titanium Alloy Ti6Al4V ELI | Bioactive Surface-CaP / SLA Surface

**Item includes:** Cover screw and implant carrier

**Connection:**  Screw type implant 2.0 mm internal hex



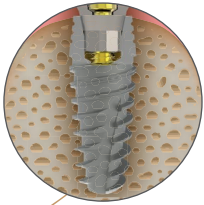
Diameter	Length	10mm	11.5mm	13mm	16mm
		 	S-L103	S-L1153	S-L133
Surface: Bioactive Surface-CaP					
 	S-LP103	S-LP1153	S-LP133	S-LP163	
Surface: Sand blasting and Acid-Etching					

**Bioactive**

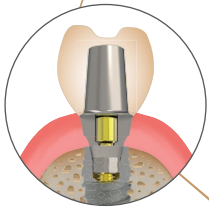
**SLA**

# M<sup>+</sup> Conical Connection

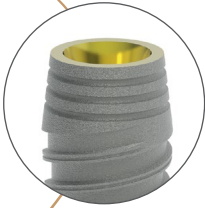
## Implant System



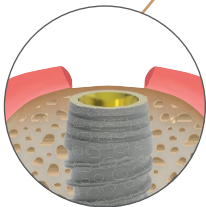
M+ conical connection implant is designed to accomplish **high primary stability**.



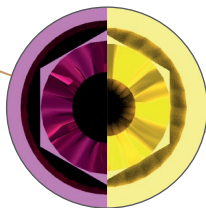
**Switching Platform** characteristic achieves optimal esthetic results with minimal effort.



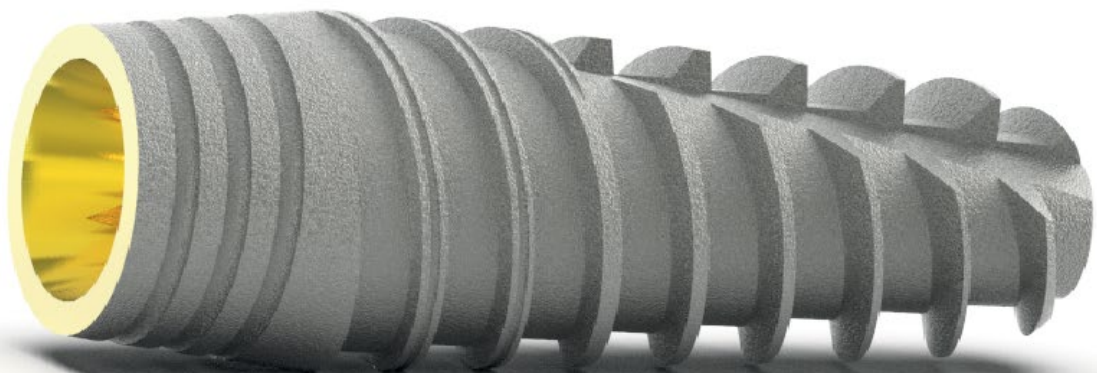
The back tapered coronal body is designed to achieve **maximal cortical bone preservation**.



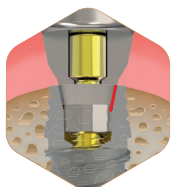
Its special features suit implant placement in **soft bone** and **post-extraction procedures**.



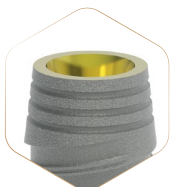
The implant is available for **Narrow** and **Regular Platforms** with different color codes.



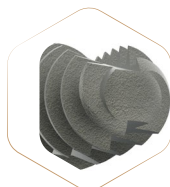
## Body Characteristics



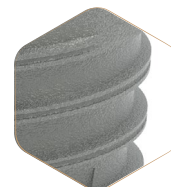
Conical Connection with Hexagonal Interlocking



Back Tapered Coronal Design



Flat Apex



Variable Thread Design



Color coding:



Material: Titanium Alloy Ti6Al4VELI

Item includes: Cover screw and implant carrier

Connection: Screw type implant conical connection

Surface: Sand blasting and Acid-Etching

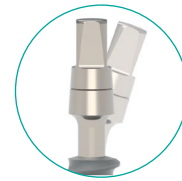
Platform: Conical connection

Diameter \ Length	8mm	10mm	11.5mm	13mm	16mm
Ø3.5mm	SCA835	SCA1035	SCA11535	SCA1335	SCA1635
Ø4.3mm	SCA843	SCA1043	SCA11543	SCA1343	SCA1643
Ø5.0mm	SCA85	SCA105	SCA1155	SCA135	SCA165





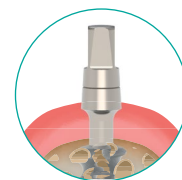
Flexible Implant



Patro offers the perfect solution for a unique one-piece implant with its flexible neck design that reaches up to 25° angulation.

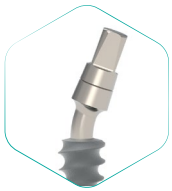


The implant's versatility offers immediate loading in multiple-unit restorations.

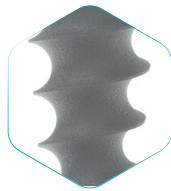


Conveniently it can be placed in the tightest and narrowest ridges.

## Body Characteristics:



Flexible Neck



Sharp and Deep Threads



A wide range of diameters from 3.0mm up to the special 4.7mm.



**Material:** Titanium Alloy Ti6Al4VELI

**Item includes:** Cover screw and implant carrier

**Connection:** One-Piece implant with an integrated abutment

**Surface:** Sand blasting and Acid-Etching

Diameter	Length	6mm	8mm	10mm	11.5mm	13mm	16mm
		Ø3.0	-	-	PTR103	PTR1153	PTR133
Ø3.3		-	PTR833	PTR1033	PTR11533	PTR1333	PTR1633
Ø3.75		-	PTR8375	PTR10375	PTR115375	PTR13375	PTR16375
Ø4.2		PTR642	PTR842	PTR1042	PTR11542	PTR1342	PTR1642
Ø4.7		PTR647	PTR847	PTR1047	PTR11547	PTR1347	PTR1647

# Handling

Alfa Gate FIT carrier makes it possible to insert all implants regardless of the platform, with a single set of keys.

The Fit Carrier must be used with torque insertion up to **35Ncm!**

# Same carrier for all implants



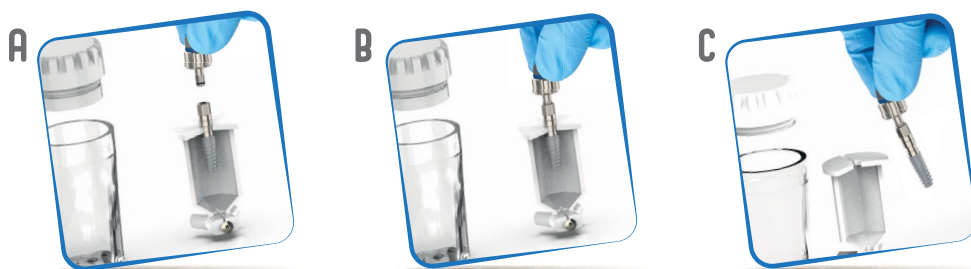
## Hand-piece insertion



## Ratchet insertion



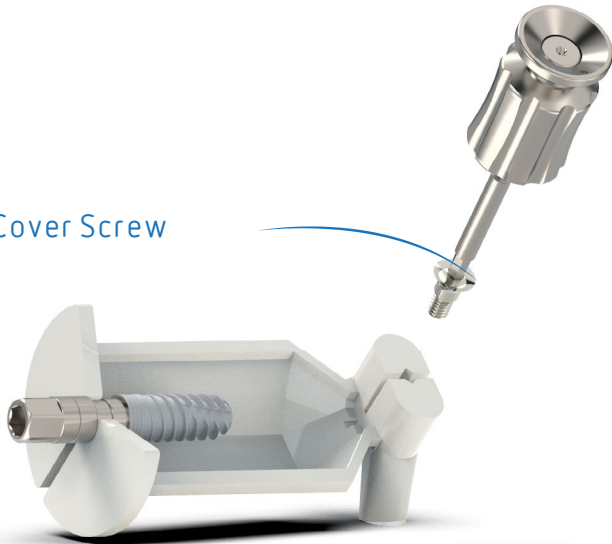
## Manual insertion



\*The final insertion is done with the matching insertion key!



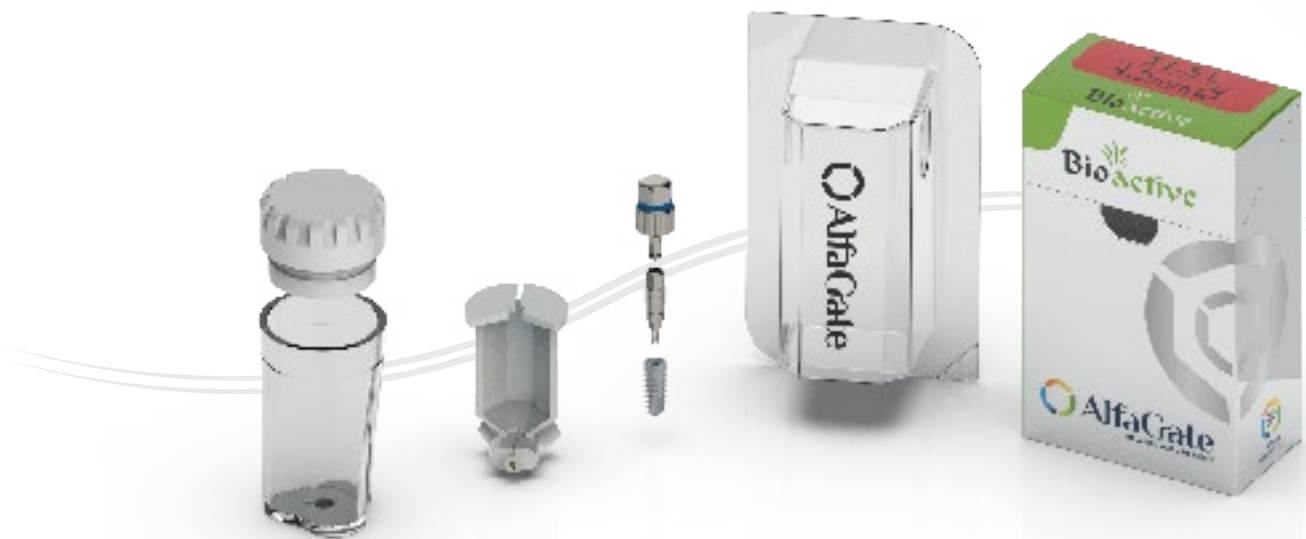
Cover Screw



Anti-slippery ring



Packaging



Important: to ensure correct and safe transfer of the implant and optimal insertion, the implant insertion key must be fully inserted into the upper hexagon of the mount.

# Prosthetics

- 28-29 S-line Narrow Platform 2.0mm
- 30-37 Standard Internal Hex Platform 2.42mm
- 37 One-Piece Platform
- 38-41 M+ Conical Connection Platforms
- 42-45 CAD/CAM
- 46-49 Prosthetics Sets

**S-line** S-line Platform 2.0mm

**SP** Standard Platform 2.42mm

**M<sup>+</sup>** Conical Platform

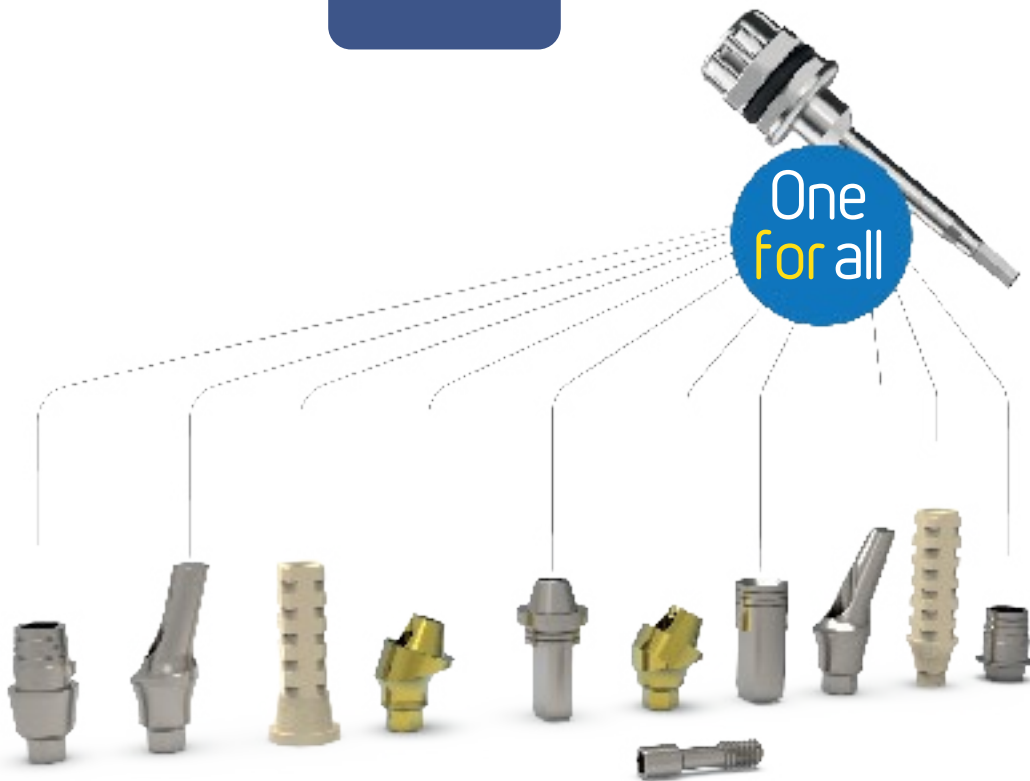


One-Piece Platform

**MU** Multi-Unit Platform

CAD/CAM

One  
for  
all



## Healing Cap Ø3.7mm

Height mm	2mm	3mm	4mm	5mm
Ref.	AGM-203-2S	AGM-203-3S	AGM-203-4S	AGM-203-5S

Additional Info: Recommended torque - manual only light finger tight (5-10Ncm) using hand driver 1.25 mm.  
Material: Titanium



## Impression Transfrs

Description	for open tray impression	for closed tray impression click connection	for closed tray impression screw connection
Height mm	14mm	9mm	11mm
Ref.	AGM-301-SL	AGM-302-SL	AGM-303-SL



Additional Info: Recommended torque - manual only light finger tight (5-10Ncm) using hand driver 1.25 mm.  
Material: Stainless Steel

## Implant Analog

Description	S-line implant analog with internal hex 2.0mm
Height mm	12mm
Ref.	AGM-214-SL

Material: Titanium



## Abutments

Description	Straight	15° angulated	Shoulder - 1mm	Shoulder - 2mm	Shoulder - 3mm
Height mm	10mm	11mm	10mm	11mm	12mm
Ref.	AGM-100-S	AGM-115-S	AGM-602-1S	AGM-602-2S	AGM-602-3S

Additional Info: Recommended torque - 20Ncm.  
Material: Titanium



## Direct Prosthetic Screw

Description	S-line screw
Height mm	7.7mm
Ref.	AGM-202S

Additional Info: Recommended torque - 20Ncm.  
Material: Titanium



## Temporary Abutments

Description	Hex	Non-Hex
Height mm	10mm	10mm
Ref.	AGM-903-SL	AGM-904-SL

Additional Info: Recommended torque - 15Ncm. - Supplied with prosthetic screw  
Material: PEEK




## Plastic Abutments for Casting Height 11mm

Description	Hex		Non-Hex	
Ref.	AGM-P6		AGM-P5	

AdditionalInfo: Recommended torque - **20Ncm**. - Supplied with prosthetic screw  
Material: Plastic

## Low Profile Connector Ø4.6mm

Height mm	2mm	3mm	4mm	5mm	
Ref.	AGM-207-2FS	AGM-207-3FS	AGM-207-4FS	AGM-207-5FS	

AdditionalInfo: Recommended torque - **20Ncm**. - Using hex driver 1.25mm. Low profile abutment used for multiple unit screw retained restorations.  
Material: Titanium

## Straight Multi-Unit Ø5.0mm

Height mm	1mm	2mm	3mm	4mm	5mm	
Ref.	AGM-700-1S	AGM-700-2S	AGM-700-3S	AGM-700-4S	AGM-700-5S	

AdditionalInfo: Recommended torque - **20Ncm**. - Using hex driver 1.25mm.  
Material: Titanium

## 17° Angulated Multi-Unit

Height mm	1mm	
Ø mm	5.0mm	
Ref.	AGM-717-1S	

AdditionalInfo: Recommended torque - **20Ncm**. - Using hex driver 1.25mm.  
Material: Titanium

## Ball Attachment Ø3.7mm

Height mm	1mm	2mm	3mm	4mm	5mm	
Ref.	AGM-105-1S	AGM-105-2S	AGM-105-3S	AGM-105-4S	AGM-105-5S	

AdditionalInfo: Recommended torque - **20Ncm**. - Using hex driver 1.25mm.  
Material: Titanium

## Alfa-Lock Attachment Ø4.5mm

Height mm	1mm	2mm	3mm	4mm	5mm	
Ref.	AGM-106-1S	AGM-106-2S	AGM-106-3S	AGM-106-4S	AGM-106-5S	

AdditionalInfo: Recommended torque - **20Ncm**. - Using hex driver 1.25mm.  
Material: Titanium

Complementary Parts are on page: 34/35/36



### Concave Healing Cap Ø4.5mm

Height mm	2mm	3mm	4mm
Ref.	AGM-203-2C	AGM-203-3C	AGM-203-4C

Additional Info: Recommended torque - manual only light finger tight (5-10 Ncm) using hand driver 1.25 mm.  
Material: Titanium



### Standard Healing Cap Ø4.2mm

Height mm	1mm	2mm	3mm	4mm	5mm	6mm	7mm
Ref.	AGM-203-1	AGM-203-2	AGM-203-3	AGM-203-4	AGM-203-5	AGM-203-6	AGM-203-7

Additional Info: Recommended torque - manual only light finger tight (5-10 Ncm) using hand driver 1.25 mm.  
Material: Titanium








### Wide Healing Cap Ø5.0mm

Height mm	1mm	2mm	3mm	4mm	5mm	6mm	7mm
Ref.	AGM-203-1W	AGM-203-2W	AGM-203-3W	AGM-203-4W	AGM-203-5W	AGM-203-6W	AGM-203-7W

Additional Info: Recommended torque - manual only light finger tight (5-10 Ncm) using hand driver 1.25 mm.  
Material: Titanium



### Closed Tray Impression Transfers

Description	with click connection		Concave with click connection		with screw connection	
Height mm	11mm		11mm		8mm	
Ref.	AGM-302		AGM-302-C		AGM-305	
Description	with screw connection		with plastic sleeve		Plastic sleeve - 4 pcs	
Height mm	10mm		8.5mm		11mm	
Ref.	AGM-305-A		AGM-304		AGM-304-P	

Additional Info: Recommended torque - manual only light finger tight (5-10 Ncm) using hand driver 1.25 mm.  
Material: Stainless Steel

### Open Tray Impression Transfers

Description	Open tray transfer		Concave open tray transfer	
Height mm	14mm		14mm	
Ref.	AGM-301		AGM-301-C	

Additional Info: Recommended torque - manual only light finger tight (5-10 Ncm) using hand driver 1.25 mm.  
Material: Stainless Steel

### Standard Platform Implant Analog

Description	Implant analog	
Height mm	12mm	
Ref.	AGM-214	

Material: Stainless Steel

## Straight Abutments

Description	Short thin		Long thin		Short standard		Standard	
Height mm	7mm		10mm		7mm		10mm	
Ref.	AGM-104S		AGM-104		AGM-101S		AGM-101	

Additional Info: Recommended torque - 25 Ncm.  
Material: Titanium

## Straight Abutments

Description	Short wide		Wide		Long base		Long neck		Solid	
Height mm	7mm		10mm		13mm		15mm		11mm	
Ref.	AGM-110S		AGM-110		AGM-108		AGM-109		AGM-190	

Additional Info: Recommended torque - 25 Ncm.  
Material: Titanium

## Shoulder Abutments

Description	Shoulder -1mm	Shoulder -2mm	Shoulder -3mm	Shoulder -4mm	
Height mm	10mm	11mm	12mm	13mm	
Ref.	AGM-602-1	AGM-602-2	AGM-602-3	AGM-602-4	

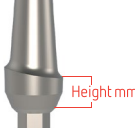
Additional Info: Recommended torque - 25 Ncm.  
Material: Titanium

## Concave Shoulder Abutments

Description	Shoulder -1mm	Shoulder -2mm	Shoulder -3mm	Shoulder -4mm	
Height mm	10mm	11mm	12mm	13mm	
Ref.	AGM-101-1C	AGM-101-2C	AGM-101-3C	AGM-101-4C	

Additional Info: Recommended torque - 25 Ncm.  
Material: Titanium

## Esthetic Abutments

Description	Esthetic -1mm	Esthetic -2mm	Esthetic -3mm	
Height mm	10mm	11mm	12mm	
Ref.	AGM-802-1	AGM-802-2	AGM-802-3	

Additional Info: Recommended torque - 25 Ncm.  
Material: Titanium

## 15° Angulated Abutments

Description	15° Thin		15° Short		15° Standard		15° Long	
Height mm	9.5mm		7mm		9.5mm		12mm	
Ref.	AGM-102T		AGM-102S		AGM-102		AGM-107	

Additional Info: Recommended torque - 25 Ncm.  
Material: Titanium

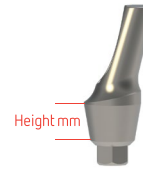


# Standard Platform 2.42mm

## 15° Angulated Esthetic Abutments

Description	15° Esthetic-1mm	15° Esthetic-2mm	15° Esthetic-3mm
Height mm	10mm	11mm	12mm
Ref.	AGM-102-E1	AGM-102-E2	AGM-102-E3

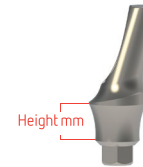
AdditionalInfo: Recommended torque - 25Ncm.  
Material: Titanium



## 15° Concave Angulated Esthetic Abutments

Description	15° Concave-1mm	15° Concave-2mm	15° Concave-3mm
Height mm	10mm	11mm	12mm
Ref.	AGM-102-1C	AGM-102-2C	AGM-102-3C

AdditionalInfo: Recommended torque - 25Ncm.  
Material: Titanium



## 25° Angulated Abutments

Description	25° Short	25° Standard	25° Long
Height mm	7mm	9.5mm	12mm
Ref.	AGM-103S	AGM-103	AGM-111

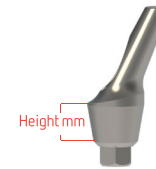
AdditionalInfo: Recommended torque - 25Ncm.  
Material: Titanium



## 25° Angulated Esthetic Abutments

Description	25° Esthetic-1mm	25° Esthetic-2mm	25° Esthetic-3mm
Height mm	10mm	11mm	12mm
Ref.	AGM-103-E1	AGM-103-E2	AGM-103-E3

AdditionalInfo: Recommended torque - 25Ncm.  
Material: Titanium



## 25° Concave Angulated Esthetic Abutments

Description	25° Concave-1mm	25° Concave-2mm	25° Concave-3mm
Height mm	10mm	11mm	12mm
Ref.	AGM-103-1C	AGM-103-2C	AGM-103-3C

AdditionalInfo: Recommended torque - 25Ncm.  
Material: Titanium



## 35° - 45° Angulated Abutments

Description	35°	45°
Height mm	11mm	11mm
Ref.	AGM-106	AGM-145

AdditionalInfo: Recommended torque - 25Ncm.  
Material: Titanium





## UCLA Abutment for Casting

Description	Castable hexed abutment with CoCr base
Height mm	16mm
Ref.	UCLA



Additional Info: Recommended torque - **25 Ncm**.  
Material: CoCr/ Plastic

## Plastic Abutments for Casting Height 11mm

Description	Hex wide profile	Hex sleeve	Non-Hex sleeve
Ref.	AGM-P1	AGM-P3	AGM-P4



Additional Info: Recommended torque - **25 Ncm**. - Supplied with prosthetic screw AGM-202  
Material: Plastic

## Direct Prosthetic Screw

Description	Standard platform screw
Height mm	7.7mm
Ref.	AGM-202



Material: Titanium

## Temporary Abutments

Description	Long screw-2pcs	Hex	Non-Hex
Height mm	15mm	10mm	10mm
Ref.	AGM-900	AGM-901	AGM-902



Additional Info: Recommended torque - **20 Ncm**. - Supplied with prosthetic screw AGM-202  
Material: Titanium

Description	Hex	Non-Hex
Height mm	10mm	10mm
Ref.	AGM-903	AGM-904



Additional Info: Recommended torque - **20 Ncm**. - Supplied with prosthetic screw AGM-202  
Material: PEEK



# Standard Platform 2.42mm

## Single Unit Ø4.6mm

Height mm	1mm	2mm	3mm
Ref.	AGM-207-1H	AGM-207-2H	AGM-207-3H



Additional Info: Recommended torque - **25Ncm**. Anti rotation anatomic connector used for single unit screw retained restorations.  
Material: Titanium

## Single Unit Prosthetics

Description	Transfer open tray	Analog	Healing Cap
Height mm	22mm	12mm	3mm
Ref.	AGM-301-H	AGM-214-H	AGM-509-H



Additional Info: Recommended torque - manual only light finger tight (**5-10Ncm**) using hand driver 1.25 mm.  
Material: Stainless Steel / Titanium

## Single Unit Prosthetics

Description	Prosthetic screw-2pcs	Plastic cylinder	Temporary PEEK cylinder
Height mm	4mm	12mm	12mm
Ref.	AGM-207-SCH	AGM-207-PH	AGM-207-PK



Additional Info: Recommended torque - Plastic **15Ncm**, Temporary **20Ncm**. - Using hex driver 1.25 mm.  
Material: Titanium/Plastic/Peel

## Low Profile Connector Ø4.6mm

Height mm	1mm	2mm	3mm	4mm	5mm	6mm
Ref.	AGM-207-1F	AGM-207-2F	AGM-207-3F	AGM-207-4F	AGM-207-5F	AGM-207-6F



Additional Info: Recommended torque - **25Ncm**. low profile abutment used for multiple unit screw retained restorations.  
Material: Titanium

## Low Profile Connector Prosthetics

Description	Transfer open tray	Analog	Healing cap
Height mm	22mm	12mm	3mm
Ref.	AGM-301-F	AGM-214-F	AGM-509-F



Additional Info: Recommended torque - manual only light finger tight (**5-10Ncm**) using hand driver 1.25 mm.  
Material: Stainless Steel / Titanium

## Low Profile Connector Prosthetics

Description	Prosthetic screw-2pcs	Titanium temporary cylinder	Plastic cylinder
Height mm	4mm	10mm	12mm
Ref.	AGM-207-SCF	AGM-207-TF	AGM-207-PF

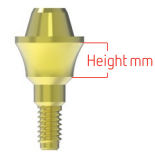


Additional Info: Recommended torque - Plastic **15Ncm**, Temporary **20Ncm**. - Using hex driver 1.25 mm.  
Material: Titanium/Plastic

### Straight Multi-Unit Ø5.0mm

Height mm	1mm	2mm	3mm	4mm	5mm
Ref.	AGM-700-1	AGM-700-2	AGM-700-3	AGM-700-4	AGM-700

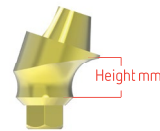
Additional Info: Recommended torque - **25Ncm**. - Using hex driver 1.25 mm.  
Material: Titanium



### 17° Angulated Multi-Unit Ø5.0mm

Height mm	1mm	2mm	3mm
Ref.	AGM-717-1	AGM-717-2	AGM-717-3

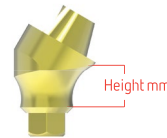
Additional Info: Recommended torque - **25Ncm**. - Using hex driver 1.25 mm.  
Material: Titanium



### 30° Angulated Multi-Unit Ø5.0mm

Height mm	1mm	2mm	3mm
Ref.	AGM-730-1	AGM-730-2	AGM-730-3

Additional Info: Recommended torque - **25Ncm**. - Using hex driver 1.25 mm.  
Material: Titanium



### 45° Angulated Multi-Unit Ø5.0mm

Height mm	1mm
Ref.	AGM-745-1



Additional Info: Recommended torque - **25Ncm**. - Using hex driver 1.25 mm.  
Material: Titanium

### Multi-Unit Prosthetics

Description	Transfer open tray	Analog	Healing Cap
Height mm	22mm	12mm	5mm
Ref.	AGM-508	AGM-507	AGM-509



Additional Info: Recommended torque - **5Ncm**. - Using hex driver 1.25 mm.  
Material: Stainless Steel / Titanium

### Multi-Unit Prosthetics

Description	Prosthetic screw-2pcs	Temporary cylinder	Plastic cylinder	Temporary PEEK cylinder
Height mm	4.5mm	12mm	12mm	12mm
Ref.	AGM-506-SC	AGM-505	AGM-506	AGM-512



Additional Info: Recommended torque - Plastic **15Ncm**, Temporary **20Ncm**. - Using hex driver 1.25 mm.  
Material: Titanium / Plastic / Peek

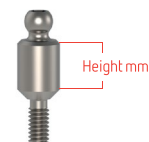


# Standard Platform 2.42mm

## Standard Ball Attachment Ø4.2mm

Height mm	0.5mm	1mm	2mm	3mm	4mm	5mm	6mm	7mm
Ref.	AGM-105-0.5	AGM-105-1	AGM-105-2	AGM-105-3	AGM-105-4	AGM-105-5	AGM-105-6	AGM-105-7

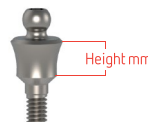
Additional Info: Recommended torque - 25Ncm. - Using hex driver 1.25mm  
Material: Titanium



## Concave Ball Attachment Ø4.2mm

Height mm	1mm	2mm	3mm	4mm
Ref.	AGM-105-1C	AGM-105-2C	AGM-105-3C	AGM-105-4C

Additional Info: Recommended torque - 25Ncm. - Using hex driver 1.25mm  
Material: Titanium





## Plastic Cap for Ball Attachment

Description	Standard	Soft	Hard
Ref.	AGM-105-P 	AGM-105-PS 	AGM-105-PH 

Additional Info: Used for all types of ball attachments  
Material: Plastic

## Metal Housing and Protective Disk

Description	Metal housing	Protective disk
Height mm	2.8mm	0.5mm
Ref.	AGM-105-M 	AGM-105-D 

Additional Info: Used for all types of ball attachments  
Material: Stainless Steel/Plastic


## Alfa-Lock Attachment Ø4.5mm

Height mm	1mm	2mm	3mm	4mm	5mm
Ref.	AGM-106-1	AGM-106-2	AGM-106-3	AGM-106-4	AGM-106-5

Additional Info: Recommended torque - 25Ncm. - Using hex driver 1.25mm  
Material: Titanium



## Plastic Cap for Alfa-Lock

Description	Standard	Soft	Hard
Ref.	AGM-106-P 	AGM-106-PS 	AGM-106-PH 

Additional Info: Used for all types of Alfa-Lock  
Material: Plastic

## Metal Housing and Protective Disk

Description	Metal housing	Protective disk
Height mm	1.6mm	0.5mm
Ref.	AGM-106-M 	AGM-106-D 

Additional Info: Used for all types of ball attachments  
Material: Stainless Steel / Plastic

## Angulated Multi Base Height 1.5mm

Description	Multi base 17°		Multi base 30°	
Ref.	AGM-501		AGM-502	


Additional Info: Recommended torque - **25 Ncm**. - Using hex driver 1.25mm  
Material: Titanium

## Ball Attachment for Multi Base

Height mm	1mm	2mm	3mm	 Height mm
Ref.	AGM-504-1	AGM-504-2	AGM-504-3	

Additional Info: Recommended torque - **25 Ncm**. - Using hex driver 1.25mm  
Material: Titanium

## Alfa-Lock for Multi Base Ø4.5mm


Height mm	1mm	2mm	3mm	 Height mm
Ref.	AGM-510-1	AGM-510-2	AGM-510-3	

Additional Info: Recommended torque - **25 Ncm**. - Using hex driver 1.25mm  
Material: Titanium




## One Piece Platform

### One-Piece Implant Analog

Height mm	21mm	
Ref.	AGM-215	

### Transfer for One-Piece Implant

Height mm	11mm	
Ref.	AGM-306	

Material: Plastic



# M+ Conical Narrow Platform

## Healing Cap Ø3.7mm - NP

Height mm	2mm	3mm	4mm	5mm
Ref.	HCC-2-NP	HCC-3-NP	HCC-4-NP	HCC-5-NP

Additional Info: Recommended torque - manual only light finger tight (5-10 Ncm) using hand driver 1.25mm.  
Material: Titanium



## Implant Transfer NP

Description	Click implant transfer	Open tray implant transfer
Height mm	11mm	14mm
Ref.	ITK-NP	ITC-NP



Additional Info: Recommended torque - manual only light finger tight (5-10 Ncm) using hand driver 1.25mm  
Material: Stainless Steel

## Implant Analog - NP

Description	Analog
Height mm	13mm
Ref.	ANC-NP



## Anatomic Straight Abutments - NP

Height mm	1mm	2mm	3mm	4mm
Ref.	ASAC-1-NP	ASAC-2-NP	ASAC-3-NP	ASAC-4-NP

Additional Info: Recommended torque - 20 Ncm.  
Material: Titanium



## Straight Abutments - NP

Height mm	9mm	13mm
Ref.	SSAC-9-NP	SSAC-13-NP



Additional Info: Recommended torque - 20 Ncm.  
Material: Titanium

## 15° Angulated Abutments - NP

Height mm	9mm	12mm
Ref.	AAC-159-NP	AAC-1512-NP



Additional Info: Recommended torque - 20 Ncm.  
Material: Titanium

## 15° Anatomic Angulated Abutments - NP

Height mm	1mm	2mm	3mm
Ref.	AAA-151-NP	AAA-152-NP	AAA-153-NP



Additional Info: Recommended torque - 20 Ncm.  
Material: Titanium

## 25° Anatomic Angulated Abutments - NP

Height mm	1mm	2mm	3mm
Ref.	AAA-251-NP	AAA-252-NP	AAA-253-NP



Additional Info: Recommended torque - 20 Ncm.  
Material: Titanium

## Straight Multi-Unit - NP

Height mm	1mm	2mm	3mm	4mm	5mm
Ref.	AGM-700-1-NP	AGM-700-2-NP	AGM-700-3-NP	AGM-700-4-NP	AGM-700-5-NP

Additional Info: Recommended torque - **20Ncm**.  
Material: Titanium



## 17° Angulated Multi-Unit - NP

Height mm	1.5mm
Ref.	AGM-717-1-NP

Additional Info: Recommended torque - **20Ncm**.  
Material: Titanium



## 30° Angulated Multi-Unit - NP

Height mm	1.5mm
Ref.	AGM-730-1-NP

Additional Info: Recommended torque - **20Ncm**.  
Material: Titanium



## Ball Attachments -NP

Height mm	1mm	2mm	3mm	4mm	5mm
Ref.	BAC -1- NP	BAC -2- NP	BAC -3- NP	BAC -4- NP	BAC -5- NP

Additional Info: Recommended torque - **20Ncm**.  
Material: Titanium



## Direct Prosthetic Screw

Height mm	7.7mm
Ref.	AGM- 202- NP

Additional Info: Recommended torque - **20Ncm**.  
Material: Titanium



## Temporary Abutment -NP

Description	Hex	Non-Hex
Ref.	AGM- 903- NP	AGM- 904- NP

Additional Info: Recommended torque - **20Ncm**.  
Material: PEEL



## Plastic Abutments for Casting

Description	Hex	Non-Hex
Ref.	AGM- P3- NP	AGM- P4- NP

Additional Info: Recommended torque - **20Ncm**. - Supplied with prosthetic screw AGM-202-NP  
Material: Plastic



Complementary Parts are on page: 34/35/36



# M+ Conical Regular Platform

## Healing Cap Ø3.7mm - RP

Height mm	2mm	3mm	4mm	5mm
Ref.	HCC-2-RP	HCC-3-RP	HCC-4-RP	HCC-5-RP

Additional Info: Recommended torque - manual only light finger tight (5-10Ncm) using hand driver 1.25mm.  
Material: Titanium



## Implant Transfer - RP

Description	Click implant transfer	Open tray implant transfer
Height mm	11mm	14mm
Ref.	ITK-RP	ITC-RP



Additional Info: Recommended torque - manual only light finger tight (5-10Ncm) using hand driver 1.25mm.  
Material: Stainless Steel

## Implant Analog - RP

Description	Analog
Height mm	13mm
Ref.	ANC-RP



## Anatomic Straight Abutments - RP

Height mm	1mm	2mm	3mm	4mm
Ref.	ASAC-1-RP	ASAC-2-RP	ASAC-3-RP	ASAC-4-RP

Additional Info: Recommended torque - 25Ncm.  
Material: Titanium



## Straight Abutments - RP

Height mm	9mm	13mm
Ref.	SSAC-9-RP	SSAC-13-RP



Additional Info: Recommended torque - 25Ncm.  
Material: Titanium

## 15° Angulated Abutments - RP

Height mm	9mm	12mm
Ref.	AAC-159-RP	AAC-1512-RP



Additional Info: Recommended torque - 25Ncm.  
Material: Titanium

## 15° Anatomic Angulated Abutments - RP

Height mm	1mm	2mm	3mm
Ref.	AAA-151-RP	AAA-152-RP	AAA-153-RP



Additional Info: Recommended torque - 25Ncm.  
Material: Titanium

## 25° Anatomic Angulated Abutments - NP

Height mm	1mm	2mm	3mm
Ref.	AAA-251-RP	AAA-252-RP	AAA-253-RP



Additional Info: Recommended torque - 25Ncm.  
Material: Titanium



## Straight Multi-Unit - RP

Height mm	1mm	2mm	3mm	4mm	5mm
Ref.	AGM-700-1-RP	AGM-700-2-RP	AGM-700-3-RP	AGM-700-4-RP	AGM-700-5-RP

Additional Info: Recommended torque - **25 Ncm**. - Using hex driver 1.25mm  
Material: Titanium



## 17° Angulated Multi-Unit - RP

Height mm	1.5mm
Ref.	AGM-717-1-RP

Additional Info: Recommended torque - **25 Ncm**.  
Material: Titanium



## 30° Angulated Multi-Unit - RP

Height mm	1.5mm
Ref.	AGM-730-1-RP

Additional Info: Recommended torque - **25 Ncm**.  
Material: Titanium



## Ball Attachments -RP

Height mm	1mm	2mm	3mm	4mm	5mm
Ref.	BAC- 1-RP	BAC- 2-RP	BAC- 3-RP	BAC- 4-RP	BAC- 5-RP

Additional Info: Recommended torque - **25 Ncm**.  
Material: Titanium



## Direct Prosthetic Screw

Height mm	7.7mm
Ref.	AGM- 202- RP

Additional Info: Recommended torque - **25 Ncm**.  
Material: Titanium



## Temporary Abutment -RP

Description	Hex	Non-Hex
Ref.	AGM- 903- RP	AGM- 904- RP

Additional Info: Recommended torque - **20 Ncm**.  
Material: PEEK



## Plastic Abutments for Casting

Description	Hex	Non-Hex
Ref.	AGM- P3- RP	AGM- P4- RP

Additional Info: Recommended torque - **25 Ncm**. - Supplied with prosthetic screw AGM-202-RP  
Material: Plastic



Complementary Parts are on page: 34/35/36

Alfa Gate's CAD/CAM advanced technology guarantees maximum precision and flexibility for dentists and dental technicians. CAD/CAM is available for all implant platforms: Internal Hex, Conical Connection, and Multi-Unit. The technology offers various types of restorative options for the treatment of single, partially, or full edentulous cases.

Alfa Gate is available for all main CAD/CAM dental planning and modeling softwares:

3shape 

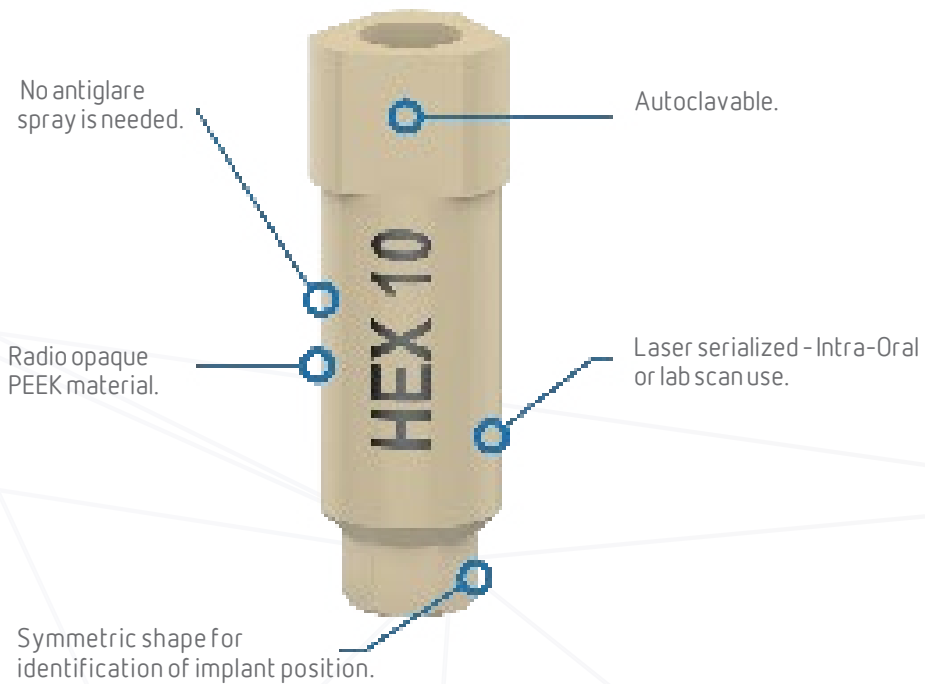
exocad

 dental wings  
digital dentistry solutions



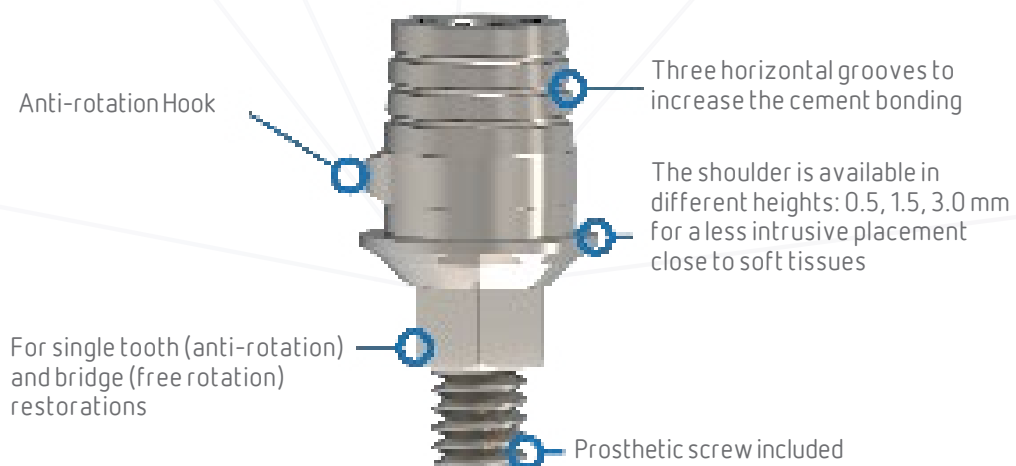
### Scan Body Advantages:

Scan Bodies are designed and manufactured to ensure high and consistent accuracy of the digital impression. Scan bodies are available for all Alfa Gate Implant System platforms. Each scan body is Laser marked with a dedicated platform code for ease of selection and identification.



### Ti-base Advantages:

Used as a titanium base when fabricating custom-milled CAD/CAM zirconia abutments for cement-retained or screw retained single and multi-unit prostheses.



## ScanBody

Height mm	10mm
Material	PEEK
Ref.	SBSL



## Digital Analog

10mm	
StainlessSteel	
AD-SL	



## Engaging Ti-Base

Height mm	0.5mm
Material	Titanium
Ref.	TBSL-05



1.5mm	
Titanium	
TBSL-15	



3.0mm	
Titanium	
TBSL-30	



## Non-Engaging Ti-Base

Height mm	0.5mm
Material	Titanium
Ref.	TBSL-NH-05



1.5mm	
Titanium	
TBSL-NH-15	



3.0mm	
Titanium	
TBSL-NH-30	



S-line

## ScanBody

Height mm	7mm
Material	PEEK
Ref.	SBH-07



10mm	
PEEK	
SBH-10	



## Digital Analog

9mm	
Stainless Steel	
AD-SP	



## Engaging Ti-Base

Height mm	0.5mm
Material	Titanium
Ref.	TBH-05



1.5mm	
Titanium	
TBH-15	



3.0mm	
Titanium	
TBH-30	



## Non-Engaging Ti-Base

Height mm	0.5mm
Material	Titanium
Ref.	TBNH-05



1.5mm	
Titanium	
TBNH-15	



3.0mm	
Titanium	
TBNH-30	



SP

## ScanBody

Height mm	7mm
Material	PEEK
Ref.	SBMU



## Digital Analog

10mm	
Stainless Steel	
AD-MU	



## Non-Engaging Ti-Base

0.3mm	
Titanium	
TBMU	



MU

## Engaging Ti-Base Compatible Sirona

Height mm	1.0mm
Material	Titanium
Ref.	TBS



SP

\*Suggested workflow is on page 73

### ScanPost

Height mm	10mm
Material	PEEK
Ref.	SBNP-10



### Digital Analog

Height mm	9mm
Material	Stainless Steel
Ref.	AD-NP



### Engaging Ti-Base

Height mm	0.5mm
Material	Titanium
Ref.	TBNP-05



Height mm	1.5mm
Material	Titanium
Ref.	TBNP-15



Height mm	3.0mm
Material	Titanium
Ref.	TBNP-30



### Non-Engaging Ti-Base

Height mm	0.5mm
Material	Titanium
Ref.	TBNP-NH-05



Height mm	1.5mm
Material	Titanium
Ref.	TBNP-NH-15



Height mm	3.0mm
Material	Titanium
Ref.	TBNP-NH-30



### ScanPost

Height mm	10mm
Material	PEEK
Ref.	SBRP-10



### Digital Analog

Height mm	9mm
Material	Stainless Steel
Ref.	AD-RP



### Engaging Ti-Base

Height mm	0.5mm
Material	Titanium
Ref.	TBRP-05



Height mm	1.5mm
Material	Titanium
Ref.	TBRP-15



Height mm	3.0mm
Material	Titanium
Ref.	TBRP-30



### Non-Engaging Ti-Base

Height mm	0.5mm
Material	Titanium
Ref.	TBRP-NH-05



Height mm	1.5mm
Material	Titanium
Ref.	TBRP-NH-15



Height mm	3.0mm
Material	Titanium
Ref.	TBRP-NH-30



## Suggested Workflow:

#### Scanning:

Scan intraorally or on your model with an Alfa Gate scan post.

#### Designing:

In the Alfa Gate implant library, select the implant scan post and Ti-Base height. Design the implant's restoration.

#### Milling:

Send the design file to mill your restoration.

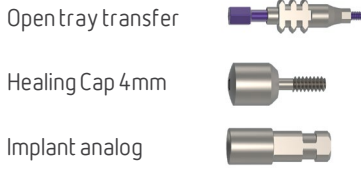
#### Cementation:

Cement the milled restoration on Ti-Base.

# Prosthetic Sets

## Impression Sets

### Open Tray Set includes:



### Available in:

-  S-line AGM-301-SLK
-  SP AGM-301-K
-  NP ITC-NP-K
-  RP ITC-RP-K



### Closed Tray Set includes:



-  S-line AGM-302-SLK
-  SP AGM-302-K
-  NP ITK-NP-K
-  RP ITK-RP-K



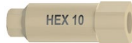
## Scan Body Set

S-line Platform-10mm  
5-Pcs.



 S-line SBSL-10-K

Internal Hex Platform-10mm  
5-Pcs.



 SP SBH-10-K

NP Conical Platform-10mm  
5-Pcs.



 NP SBNP-10-K

RP Conical Platform-10mm  
5-Pcs.



 RP SBRP-10-K

Multi-Unit Platform-7mm  
5-Pcs.



 MU SBMU-K



### All ScanBody Sets include:

Hex driver  
1.25mm - (Long)  
AGM-400



## Multi-Unit Sets

### S-line Straight Multi-Unit

Height mm	1mm	2mm	3mm	4mm	5mm	
Ref.	AGM-700-1-SK	AGM-700-2-SK	AGM-700-3-SK	AGM-700-4-SK	AGM-700-5-SK	

### S-line 17° Angulated Multi-Unit

Height mm	1.5mm	
Ref.	AGM-717-1-SK	

**SP** Straight Multi-Unit

Height mm	1mm	2mm	3mm	4mm	5mm	
Ref.	AGM-700-1-K	AGM-700-2-K	AGM-700-3-K	AGM-700-4-K	AGM-700-5-K	

**SP** 17° Angulated Multi-Unit

Height mm	1mm	2mm	3mm	
Ref.	AGM-717-1-K	AGM-717-2-K	AGM-717-3-K	

**SP** 30° Angulated Multi-Unit

Height mm	1mm	2mm	3mm	
Ref.	AGM-730-1-K	AGM-730-2-K	AGM-730-3-K	

**SP** 45° Angulated Multi-Unit

Height mm	1mm	
Ref.	AGM-745-1-K	

**NP** Straight Multi-Unit

Height mm	1mm	2mm	3mm	4mm	5mm	
Ref.	AGM-700-1-NPK	AGM-700-2-NPK	AGM-700-3-NPK	AGM-700-4-NPK	AGM-700-5-NPK	

**NP** 17° Angulated Multi-Unit

Height mm	1.5mm	
Ref.	AGM-717-1-NPK	

**NP** 30° Angulated Multi-Unit

Height mm	1.5mm	
Ref.	AGM-730-1-NPK	

**RP** Straight Multi-Unit

Height mm	1mm	2mm	3mm	4mm	5mm	
Ref.	AGM-700-1-RPK	AGM-700-2-RPK	AGM-700-3-RPK	AGM-700-4-RPK	AGM-700-5-RPK	

**RP** 17° Angulated Multi-Unit

Height mm	1.5mm	
Ref.	AGM-717-1-RPK	

**RP** 30° Angulated Multi-Unit

Height mm	1.5mm	
Ref.	AGM-730-1-RPK	

All Multi-Unit Sets include:

Description	Temporary cylinder	Plastic cylinder		
Ref.	AGM-505	AGM-506		
Analog	Transfer	Healing cap	Screw - 2pcs	
AGM-507	AGM-508	AGM-509	AGM-506-SC	



## Ball Attachment Sets

### S-line Ball Attachment

Height mm	1mm	2mm	3mm	4mm	5mm
Ref.	AGM-105-1SK	AGM-105-2SK	AGM-105-3SK	AGM-105-4SK	AGM-105-5SK



### SP Ball Attachment

Height mm	0.5mm	1mm	2mm	3mm	4mm	5mm	6mm	7mm
Ref.	AGM-105-0.5K	AGM-105-1K	AGM-105-2K	AGM-105-3K	AGM-105-4K	AGM-105-5K	AGM-105-6K	AGM-105-7K



### NP Ball Attachment

Height mm	1mm	2mm	3mm	4mm	5mm
Ref.	BAC-1-NPK	BAC-2-NPK	BAC-3-NPK	BAC-4-NPK	BAC-5-NPK



### RP Ball Attachment

Height mm	1mm	2mm	3mm	4mm	5mm
Ref.	BAC-1-RPK	BAC-2-RPK	BAC-3-RPK	BAC-4-RPK	BAC-5-RPK



### All Ball Attachment Sets include:

Description	Standard plastic cap		Soft plastic cap	
Ref.	AGM-105-P		AGM-105-PS	
Hard plastic cap		Metal housing		Protective disk
AGM-105-PH		AGM-105-M		AGM-105-D



## Alfa-Lock Sets

### S-line Alfa-Lock

Height mm	1mm	2mm	3mm	4mm	5mm
Ref.	AGM-106-1SK	AGM-106-2SK	AGM-106-3SK	AGM-106-4SK	AGM-106-5SK



### SP Alfa-Lock

Height mm	1mm	2mm	3mm	4mm	5mm
Ref.	AGM-106-1K	AGM-106-2K	AGM-106-3K	AGM-106-4K	AGM-106-5K



### All Alfa-Lock Sets include:

Description	Standard plastic cap		Soft plastic cap	
Ref.	AGM-106-P		AGM-106-PS	
Hard plastic cap		Metal housing		Protective disk
AGM-106-PH		AGM-106-M		AGM-106-D





## Ball Attachment Replacement Set

Ref. AGM-105-1T

Description	Standard plastic cap		Soft plastic cap	
Ref.	AGM-105-P		AGM-105-PS	
Hard plastic cap		Metal housing		Protective disk
AGM-105-PH		AGM-105-M		AGM-105-D 



## Alfa-Lock Replacement Set

Ref. AGM-106-1T

Description	Standard plastic cap		Soft plastic cap	
Ref.	AGM-106-P		AGM-106-PS	
Hard plastic cap		Metal housing		Protective disk
AGM-106-PH		AGM-106-M		AGM-106-D 



# Surgical Kits & Instruments

52-57	Kits
58-60	Instruments & Tools
61	Surgical Drills
62	Alfa Bone
63	Alfa Motor

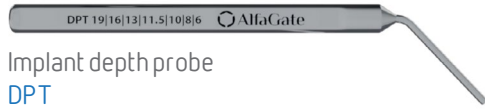


# Advanced Kit

Advanced Kit improves your surgical procedure with an array of instruments needed for all cases.

Alfa Gate Advanced surgical kit includes instruments for all of our implants Bioactive, TRIO, Porous, MAX, S-line, Slim, Patro and M+ conical connection implants.

## Kit includes:



Implant depth probe  
DPT



Torque wrench  
TW

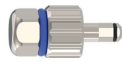
## Implant Insertion Tools:



Handpiece 2.5mm (Long)  
HAL



Handpiece 2.5mm (Short)  
HAS



Hand/Ratchet  
ITUS



2.5mm (Long)  
IT2.5



S-line 2.0mm (Long)  
IT2



S-line 2.0mm (Long)  
IT2



S-line 2.0mm (Short)  
ITS2



One-Piece (Long)  
ITSL



One-Piece (Short)  
ITSLS



NP(Long)  
IT-NP



NP(Short)  
ITS-NP



RP(Long)  
IT-RP



RP(Short)  
ITS-RP

## Tools:



Drill extender  
DE



Parallel pin x4  
PP



Tissue punch Ø 4mm  
PCH-4



Tissue punch Ø 5mm  
PCH-5

## Prosthetic Drivers Hex 1.25mm:



Long  
AGM-400



Short  
AGM-400-S



Hand  
AGM-400-R



Handpiece  
HB

## Drills:



DM



DP2



D2.8



D3.2



D3.65



D4.2



D4.6



D5.2



# Premium Kit

Premium Surgical Kit has the most precise and unique set of tools to complete even the complex cases with ease. The kit includes 25 built-in stopper drills that ensure a simple and accurate depth control during the drilling process. As well, it includes a set of standard drills for hand-free procedures.

## Kit includes:

### Tools:



Parallel pin x2  
PP



Ratchet wrench  
RW

### Prosthetic Drivers Hex 1.25mm:



Long  
AGM-400



Short  
AGM-400-S

### Implant Insertion Tools:



2.5mm (Long)  
IT2.5



2.5mm (Short)  
ITS2.5



S-line 2.0mm (Long)  
IT2



S-line 2.0mm (Short)  
ITS2



Hand/Ratchet  
ITUS



Handpiece 2.5mm (Short)  
HAS

### Drills:



DM



DP2



D2.8



D3.2



D3.65



D4.2



D4.6

### Stopper Drills:



Ø2-L13mm



Ø2-L11.5mm



Ø2-L10mm



Ø2-L8mm



Ø2-L6mm



Ø2.8-L13mm



Ø2.8-L11.5mm



Ø2.8-L10mm



Ø2.8-L8mm



Ø2.8-L6mm



Ø3.2-L13mm



Ø3.2-L11.5mm



Ø3.2-L10mm



Ø3.2-L8mm



Ø3.2-L6mm



Ø3.65-L13mm



Ø3.65-L11.5mm



Ø3.65-L10mm



Ø3.65-L8mm



Ø3.65-L6mm



Ø4.2-L13mm



Ø4.2-L11.5mm



Ø4.2-L10mm



Ø4.2-L8mm



Ø4.2-L6mm



# Conical Connection Kit

Conical Connection Kit is designed for insertion of both NP and RP conical connection implants.

## Kit includes:



Ratchet wrench  
RW

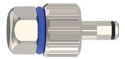
## Implant Insertion Tools:



Handpiece 2.5mm (Long)  
HAL



Handpiece 2.5mm (Short)  
HAS



Hand/Ratchet  
ITUS



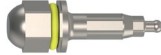
NP(Long)  
IT-NP



NP(Short)  
ITS-NP



RP(Long)  
IT-RP



RP(Short)  
ITS-RP



## Prosthetic Drivers Hex 1.25mm:



Long  
AGM-400



Short  
AGM-400-S



Hand  
AGM-400-R



Handpiece  
HB

## Tools:



Drill extender  
DE



Parallel pin x3  
PP



Tissue punch Ø 4mm  
PCH-4



Tissue punch Ø 5mm  
PCH-5

Ref. SKTM

## Drills:





# Prime Kit

One of Alfa Gate's most impressive and concise dental kits is the Prime Surgical Kit. It includes every instrument a surgeon needs for optimal results.

## Kit includes:



Ratchet wrench  
RW

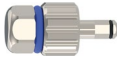
## Implant Insertion Tools:



Handpiece 2.5mm (Long)  
HAL



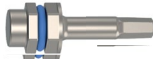
Handpiece 2.5mm (Short)  
HAS



Hand/Ratchet  
ITUS



2.5mm (Long)  
IT2.5



2.5mm (Short)  
ITS2.5



S-line 2.0mm (Long)  
IT2



S-line 2.0mm (Short)  
ITS2

## Prosthetic Drivers Hex 1.25mm:



Long  
AGM-400



Short  
AGM-400-S



Hand  
AGM-400-R



Handpiece  
HB

## Tools:



Drill extender  
DE



Parallel pin x3  
PP



Ref. BSKT

## Drills:



DM



DP2



D2.8



D3.2



D3.65





D4.2



D4.6



# Surgical Instruments & Tools

## Tissue Punch

Ø mm	4.0 mm		5.0 mm	
Ref.	PCH-4		PCH-5	

Additional Info: Used for gingival punch and implant uncovering  
Material: Stainless Steel

## Countersink Drills

Ø mm	3.75/4.2 mm		5.0/6.0 mm	
Ref.	DCS 37-42		DCS 5-6	




Additional Info: Used in hard bone to drill through cortical bone layer  
Material: Stainless Steel

## Trephine Drills

Ø mm	4.0/5.0 mm		5.0/6.0 mm	
Ref.	TDR 4-5		TDR 5-6	

Additional Info: Used for bone harvesting and implant removal  
Material: Stainless Steel



## Marking Drill and Drill Extender

Description	Marking drill		Lance Drill		Drill extender	
Ø / Height mm	Ø 1.9 mm		Ø 1.5 mm		H:26mm	
Ref.	DM		DM1.5		DE	

Additional Info: For marking the cortical plate  
Material: Stainless Steel



Extends drills by 17 mm

## Standard Platform Implant Insertion Tools

Description	Long		Short	
Hex mm	2.42 mm		2.42 mm	
Ref.	IT-2.5		ITS-2.5	





Additional Info: Used for internal hex implant insertion 2.42 mm (Bioactive, MAX, Porous)  
Material: Stainless Steel

## S-line Implant Insertion Tools

Description	Long		Short	
Hex mm	2.0 mm		2.0 mm	
Ref.	IT-2.5		ITS-2.5	

Additional Info: Used for internal hex implant insertion 2.0 mm (S-line)  
Material: Stainless Steel

## M+ Conical Implant Insertion Tools

Description	NP - Long		NP - Short		RP - Long		RP - Short	
∅mm	2.26mm		2.26mm		2.66mm		2.66mm	
Ref.	IT-NP		ITS-NP		IT-RP		ITS-RP	

Material: Stainless Steel



## One-Piece Implant Insertion Tools

Description	Long		Short	
∅mm	2.1mm		2.1mm	
Ref.	ITSL		ITSLS	

Additional Info: Used for insertion of One-Piece implant (Slim, Patro)

Material: Stainless Steel

## Handpiece Drivers

Description	Handpiece 2.42mm insertion tool		Handpiece 2.0mm insertion tool		Handpiece 1.25mm insertion tool		Internal hex driver for handpiece	
∅mm	2.42 mm		2.0 mm		1.25 mm			
Ref.	HA		HC		HB		HPD	

Additional Info: Recommended insertion speed 15-25 RPM

Material: Stainless Steel

## Parallel Pin and Spacer

Description	Drilling spacer		Parallel pin	
∅mm	2.0 mm		2.0/2.8 mm	
Ref.	SPR		PP	

Additional Info: Used for precise spacing and parallel placement of implant

Material: Stainless Steel

Used for parallel placement of implant



## Prosthetics Hex Drivers

Description	Long		Short		Hand Key	
∅mm	1.25 mm		1.25 mm		1.25 mm	
Ref.	AGM-400		AGM-400S		AGM-400R	

Additional Info: Compatible with all Alfa Gate prosthetics and screws

Material: Stainless Steel


## Insertion Driver for Implant Carrier

Description	Handpiece - Long		Handpiece - Short		Hand/Ratchet	
∅mm	2.42mm		2.42mm		2.42mm	
Ref.	HAL		HAS		ITUS-2.5	

Additional Info: Recommended insertion speed 15-25 RPM

Material: Stainless Steel


## Universal Torque Wrench 10-45 Ncm

Ø mm	6.35mm	
Ref.	TW	6.35mm



**Additional Info:** Allows the clinician to accurately apply the recommended preload torque for implant insertion and prosthetics  
**Material:** Stainless Steel


## Ratchet Wrench

Ø mm	6.35mm	
Ref.	RW	6.35mm



**Additional Info:** The ratchet wrench is used for implant placement and tightening  
**Material:** Stainless Steel

## Prosthetic Holder

Ø mm	2.42 mm	
Ref.	PH	2.42 mm



**Additional Info:** Provides an easy way to shape and grind abutments  
**Material:** Stainless Steel

## Surgical Screw Driver

Ø mm	6.35mm	
Ref.	SDI	6.35mm



**Additional Info:** Manual implant driver allows tactile feel and controlled implant insertion  
**Material:** Stainless Steel

## Implant Depth Probe

Ø mm	2.0mm
Ref.	DPT



**Additional Info:** Implant site depth probe.  
**Material:** Stainless Steel

# Surgical Drills

## Dual Step Drill External Irrigation

Ø mm	2.0 mm	2.8 mm	3.2 mm	3.65 mm	4.2 mm	4.6 mm	5.2 mm
Height mm	37.6 mm	37.6 mm	37.6 mm	37.6 mm	37.6 mm	37.6 mm	37.6 mm
Ref.	DP2	D2.8	D3.2	D3.65	D4.2	D4.6	D5.2

Material: Stainless Steel



## Dual Step Drill External Irrigation

Ø mm	2.0 mm	2.8 mm	3.2 mm	3.65 mm	4.2 mm	4.6 mm	5.2 mm
Height mm	37.6 mm	37.6 mm	37.6 mm	37.6 mm	37.6 mm	37.6 mm	37.6 mm
Ref.	DP2	D2.8	D3.2	D3.65	D4.2	D4.6	D5.2

Material: Stainless Steel




Alfa Bone is a resorbable bone graft, fully synthetic biphasic bone substitute with controlled resorption properties. Alfa Bone is made from homogenous composition of 75% hydroxyapatite (HA) and 25% beta tri-calcium phosphate (b-TCP) which results in bi-phasic activity formation of new bone tissue, while maintaining volume and mechanical stability.

## Alfa Bone features:

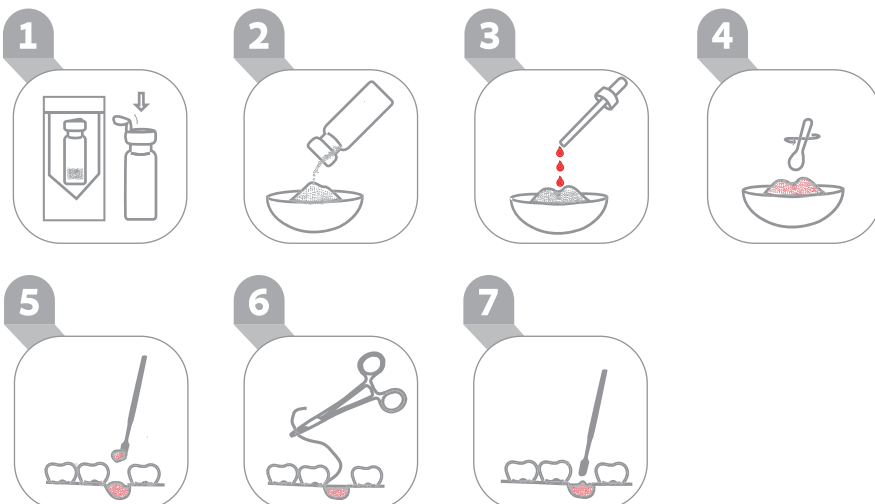
- 100% synthetic and resorbable.
- Perfect osteoconductivity.
- High microporosity.
- Excellent mechanical stability.
- Preserve the shape and the volume of the bone defect.

## Applications:

- Periodontal defects.
- Sinus floor elevation.
- Alveolar augmentations.
- Socket preservation.



## Easy Handling:



Granules Size	0.1-0.5mm	0.5-1.0mm	1.0-2.0mm
Quantity	1g x 5	1g x 5	1g x 5
Ref.	ALBXXS-5	ALBS-5	ALBL-5



The new Alfa Motor system was developed with the intention to provide extra smoothness into your hands. Electronic motor and sophisticated motor controls are key players in this product. New design with smooth edges for easy cleaning. An LCD display that provides you all the information at a glance. Single function haptic keys and audible feedback guarantee an accurate device setup. Inserting and changing tube sets is carried out effortlessly by a front access push button and tube compartment.

### Surgical Handpieces (20:1)



### Multi-Functional Foot Control (Ki-F20)



- A-Coolant (4 steps)
- B-Program (9 programs)
- C-F/R direction
- D-Speed foot control

The tube bracket swings out and stays in plain sight while the tube set is positioned between the two notches of the bracket. A broad variety of extensions and accessories are available.

#### Features

- Suitable for oral and maxillofacial surgery
- Maximum 70 Ncm torque (20:1)
- Speed range and torque level

Gear Ratio	1:1	1:2	20:1	32:1
RPM	600 - 40,000	1,200 - 80,000	20 - 2,000	20 - 1,200
NCM	-	-	5 - 70	5 - 90

- 9 Memory programs - optic (on/off), speed, gear ratio, coolant, forward/reverse, torque.
- LCD display

#### Ref.

- AGPHY Alfa Motor Physio dispenser
- AGHP Fiber optic hand piece
- AGPHT Irrigation tube



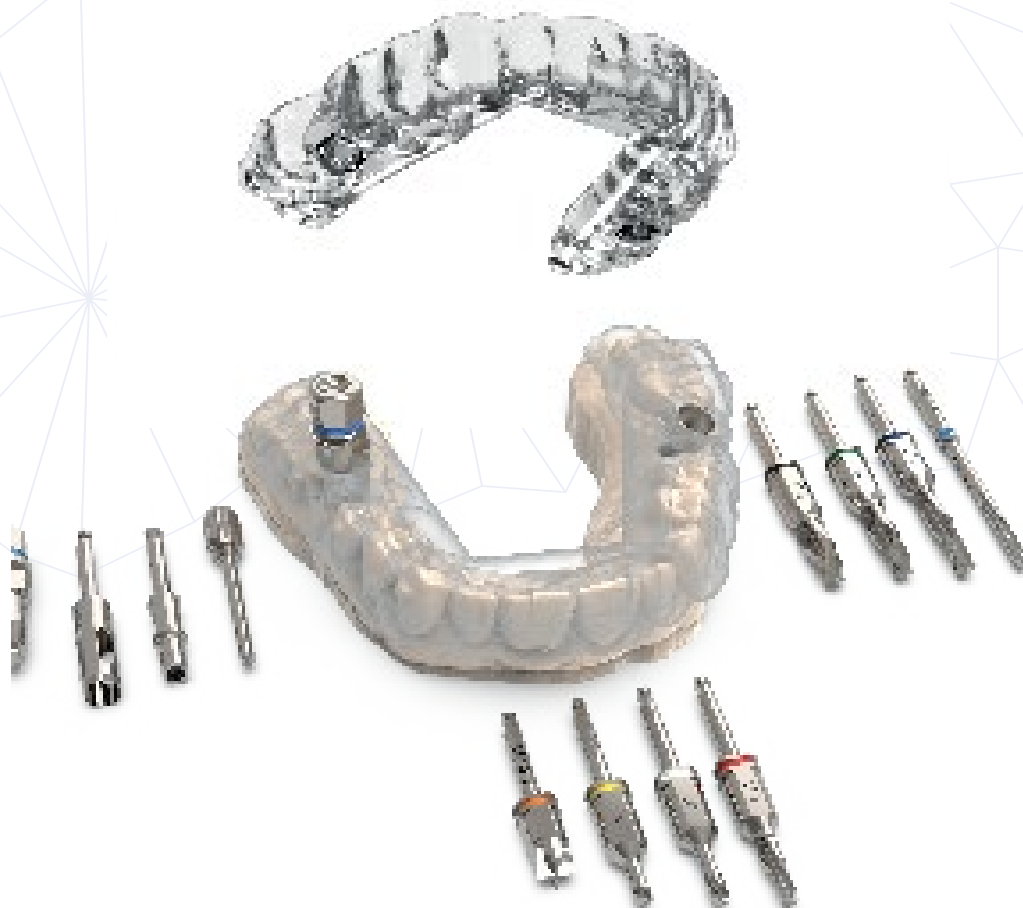
Alfa Gate guarantees complete prosthetic-driven implant planning, ensuring ideal dental restoration with our advanced Alfa Guide digital technology.

The Alfa Guide Team includes the leading oral surgeons and technicians with many years of experience in innovating the digital dentistry world.

We guarantee a fully guided surgical procedure that assures the optimal implant for clinical execution, completing the operation using the full Alfa Guide Package.

The package includes our advanced Guided Surgery Kit, surgical guide, surgical report, surgical protocol and implants.

Moreover, a temporary tooth design is available for immediate loading cases.





# Advantages of Alfa Guide

## Digital Dentistry Done Right!

The surgical plan is done by experienced oral surgeons, Alfa Guide Team plans the virtual surgical procedure effortlessly and effectively.



## Available Advisory

Alfa Guide Team offers consultancy for every case, with special guidance to perform the most ideal surgical procedure.



## Surgical Guide You Can Trust

Perfect fit for precise implant placement guaranteeing successful procedure even in the most challenging cases. Varying diameters can be inserted in the surgical Guide, from 3mm to 5mm and up to 16mm in length.



## Intuitive Kit Layout

The surgical kit makes the surgical procedure easier and more precise due to its straight forward and simple design; The comprehensive and single kit layout has insertion tools and drills for all implant platforms.

## Innovative Sleeve Design

Titanium Sleeve with Hex indication for accurate final implant placement.



## Alfa Guide Sleeves

Description	Full Sleeve	Narrow Sleeve	Open Sleeve	Anchor Sleeve	Pilot Drill Sleeve
Height mm	5mm	5mm	5mm	7mm	5mm
Ref.	SLV-F	SLV-N	SLV-O	SLV-A	SLV-P
Internal Ø	5mm	5mm	5mm	2mm	2mm

Material: Titanium

# Alfa Guide Surgical Kit

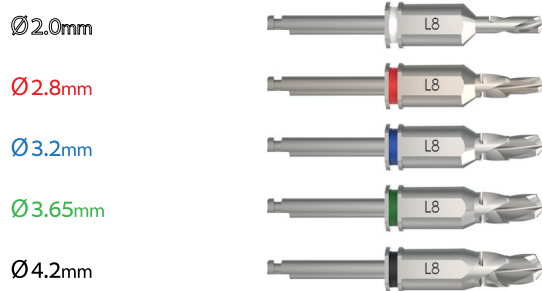
Alfa Guide Surgical Kit is an intuitive kit that has every tool needed to complete your guided surgical procedure. Moreover, each drill has a simple color-coding sequence, and all the necessary insertion tools are present in a single layout. The fully guided placement of the implant can be inserted through the surgical guide using the special insertion keys that are included in the kit.

## Kit Layout Categories

### Site preparation



### Drilling



Drills Lengths:  
L: 6 / 8 / 10 / 11.5 / 13 / 16mm

### Implant Insertion

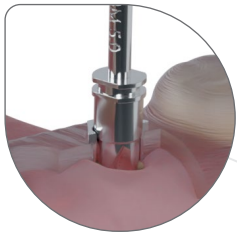


Ref. GKT

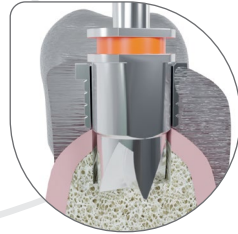
### Tools and Fixation



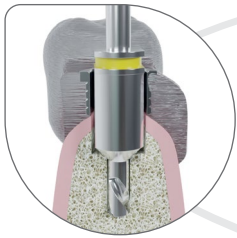
## Advantages of AlfaGuide Surgical Kit



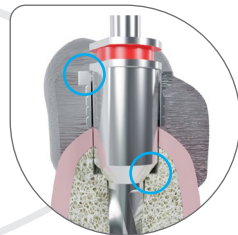
**Tissue punch** - for minimally invasive procedures for flapless surgery.



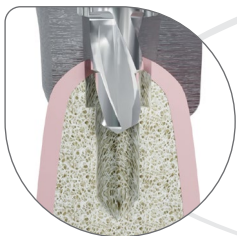
**Bone mill** - designed for flattening crestal bone and knife edges or narrow alveolar ridges. Moreover, it can be used to remove the soft tissue after the use of tissue punch.



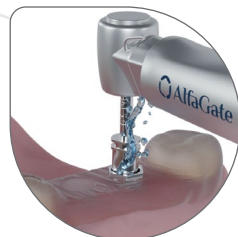
**Start drill** creates the initial osteotomy for the implant to make the drilling sequence more efficient.



**Double stopper mechanism** as Guided drills are designed with this mechanism, the drill stops at the sleeve level and at the bone level which makes the drilling **safer**.

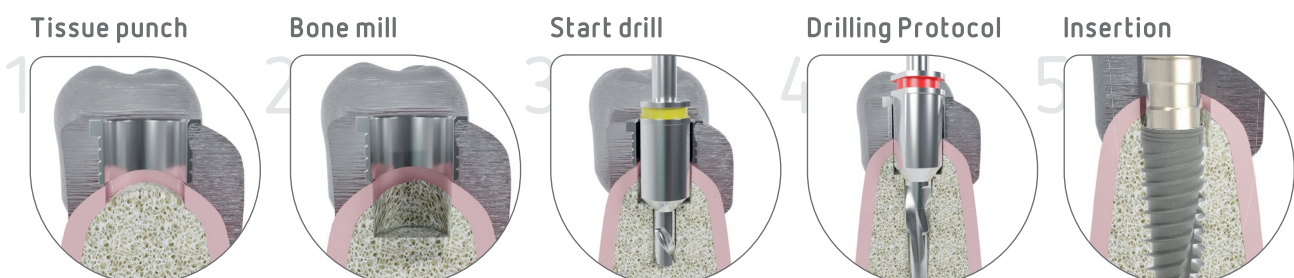


**Dual-step drill** and its unique protocol maintain a previous diameter at the tip of its drill, ensuring that they not only stabilize at the guide level but also at the drill tip, thus **avoiding potential operator errors**.



**The two flat sides** of the drill allow for **maximal cooling** during osteotomy which allows for maintaining irrigation thus **avoiding bone heating**.

## Surgical Kit Workflow:

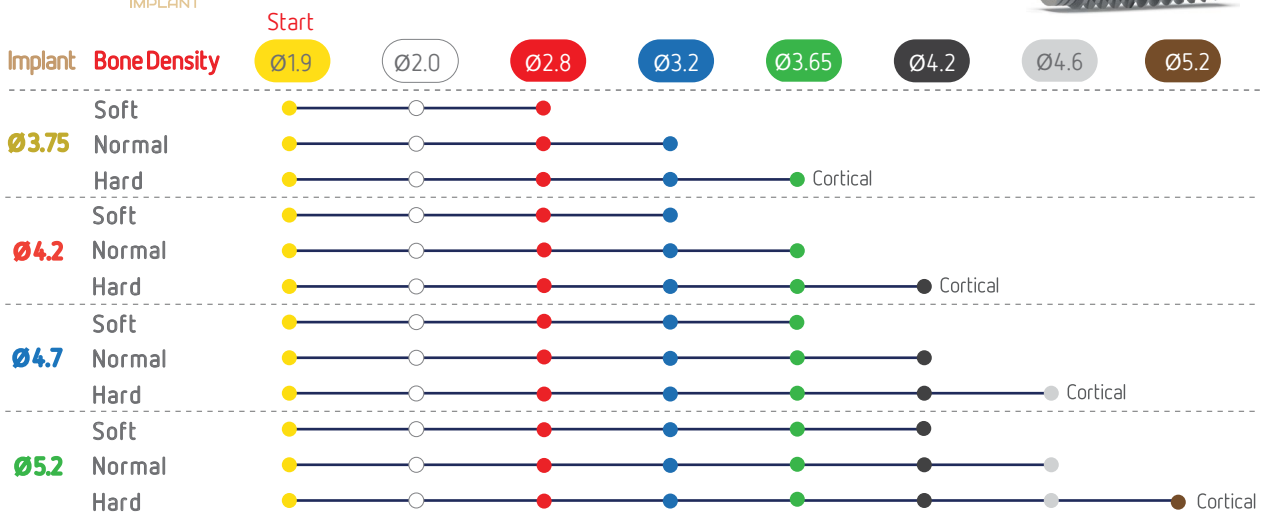
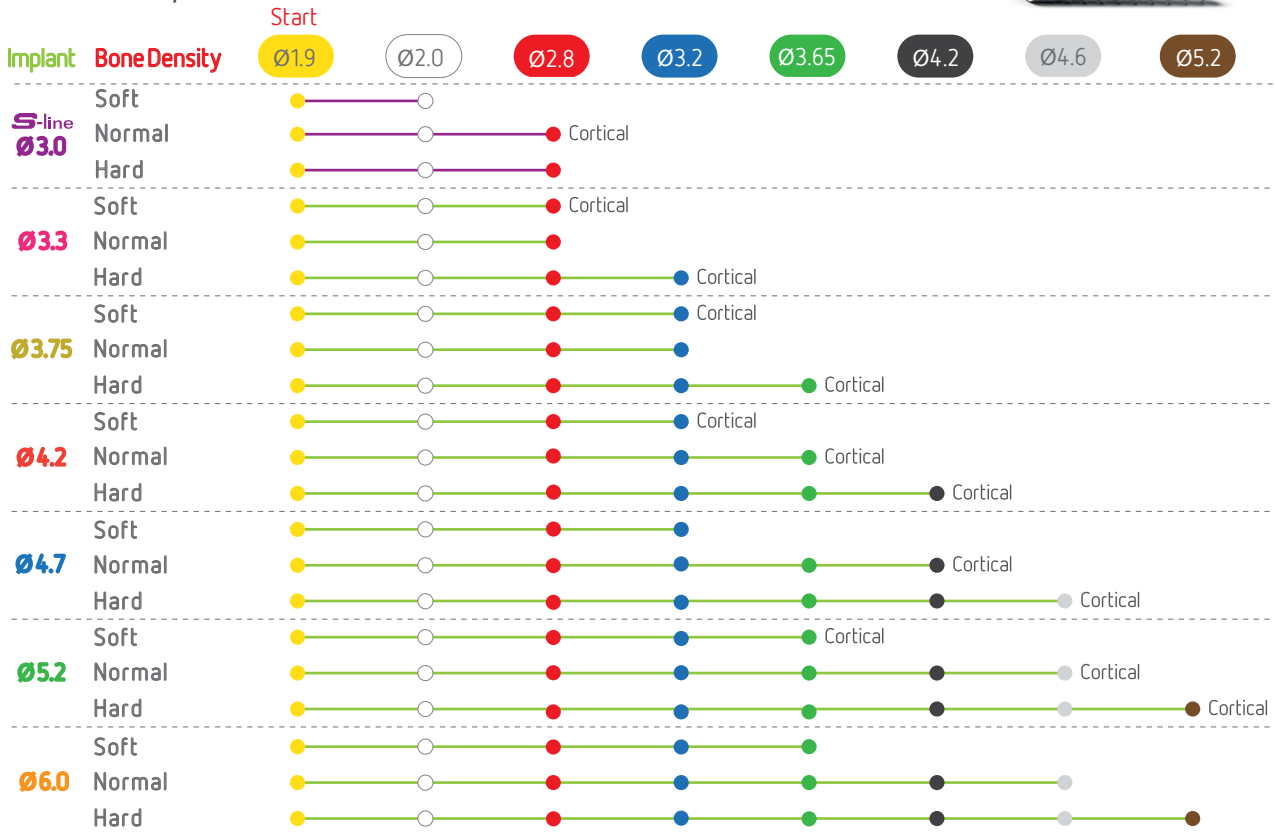


# Drilling Protocol

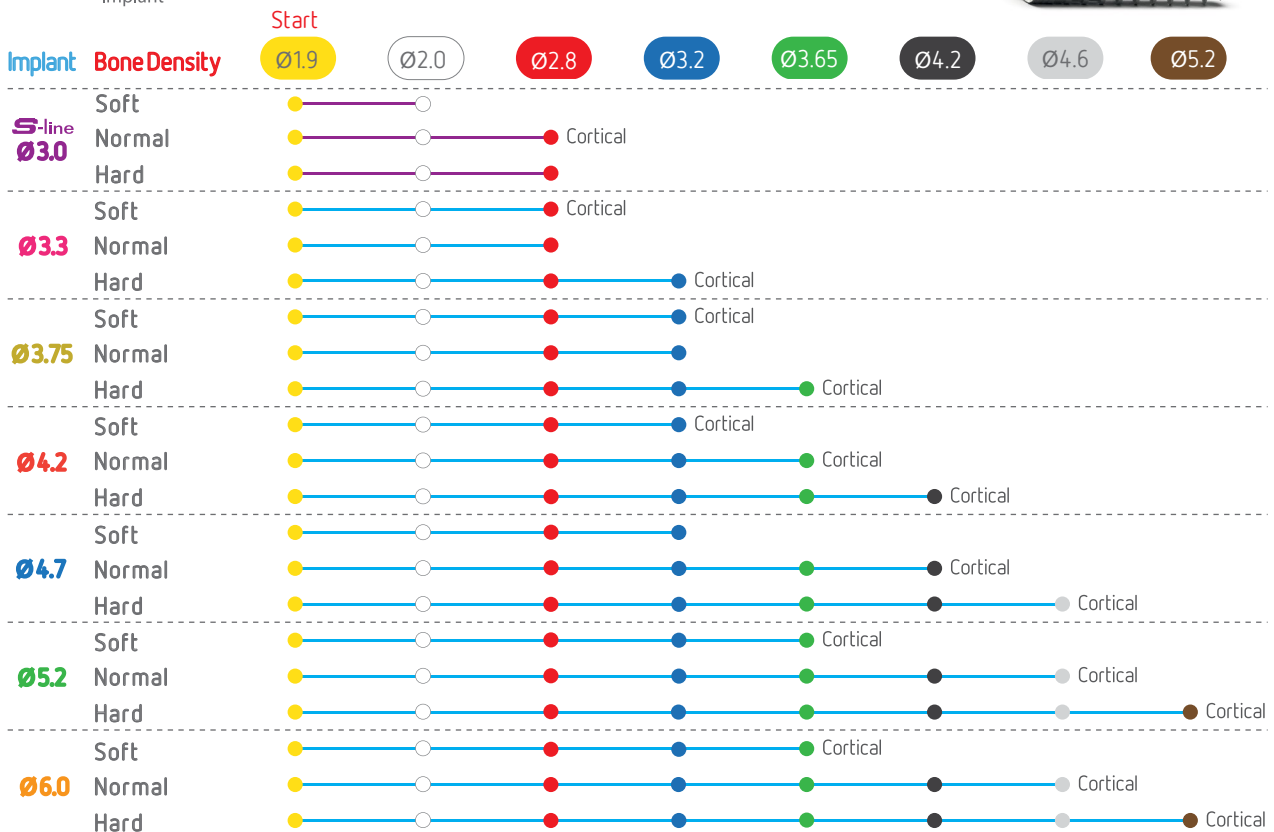
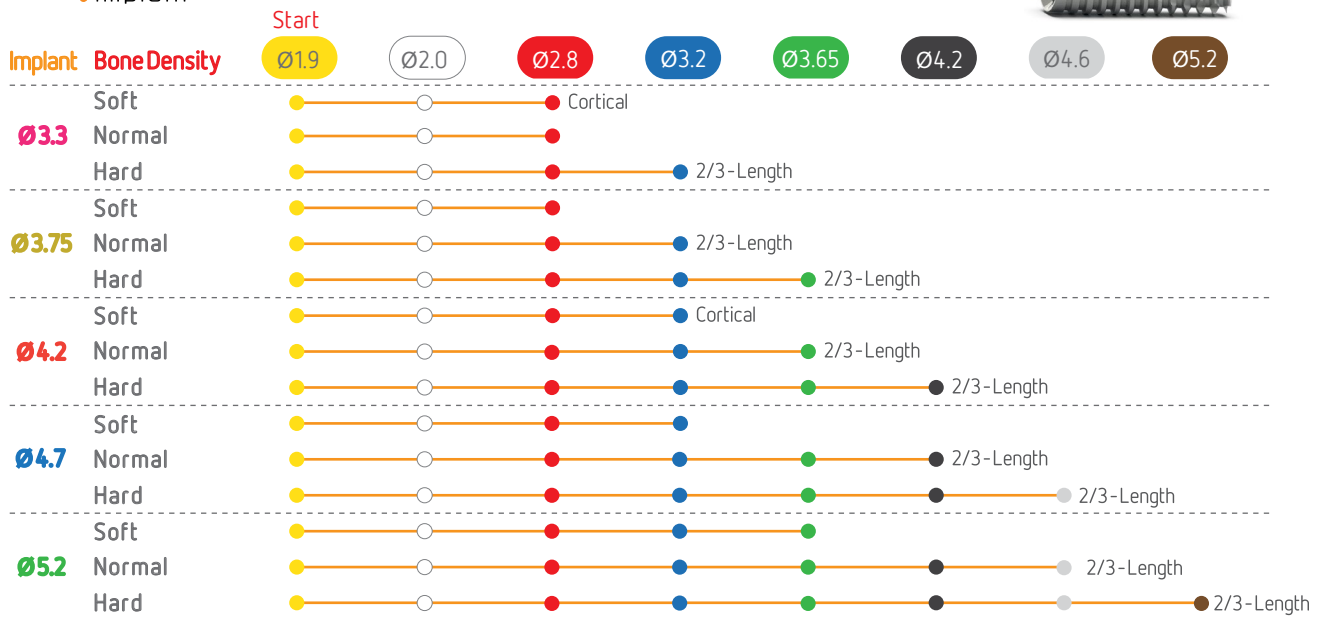
- 69 Bioactive/Trio
- 70 Porous/Max
- 71 Patro/M+
- 72 Suggested Drilling Protocol



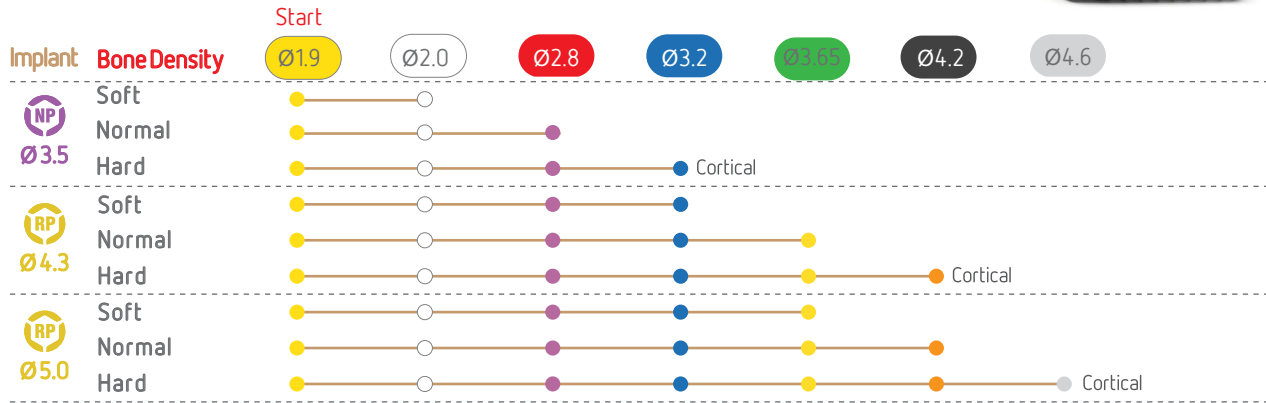
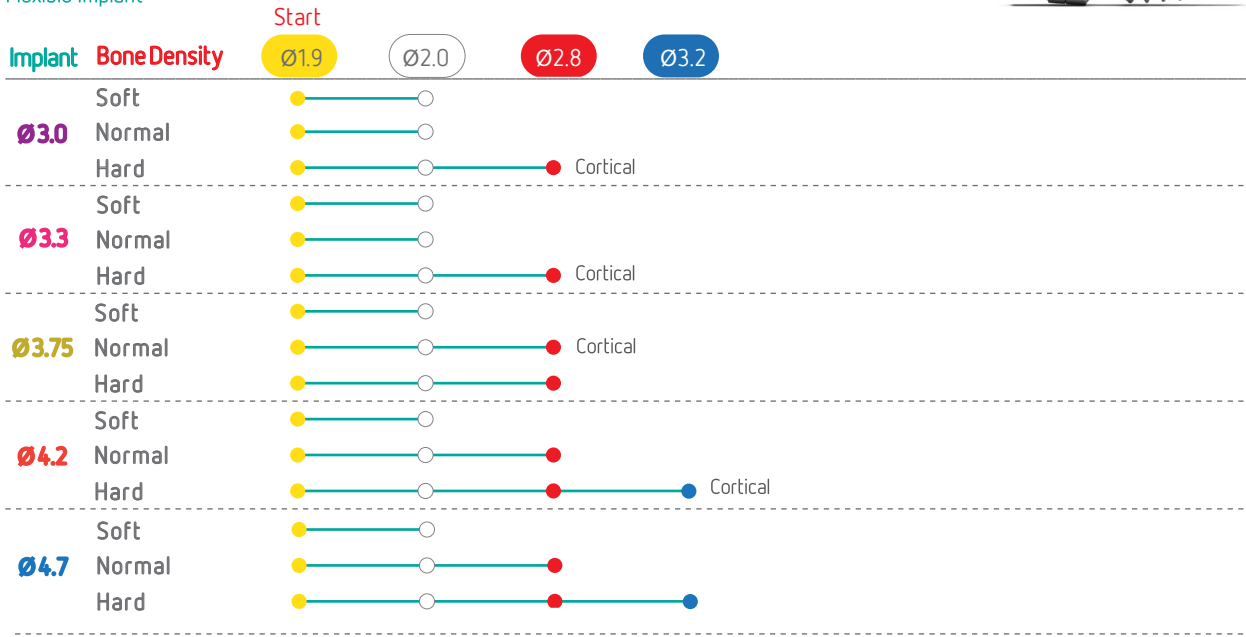
# Drilling Protocols



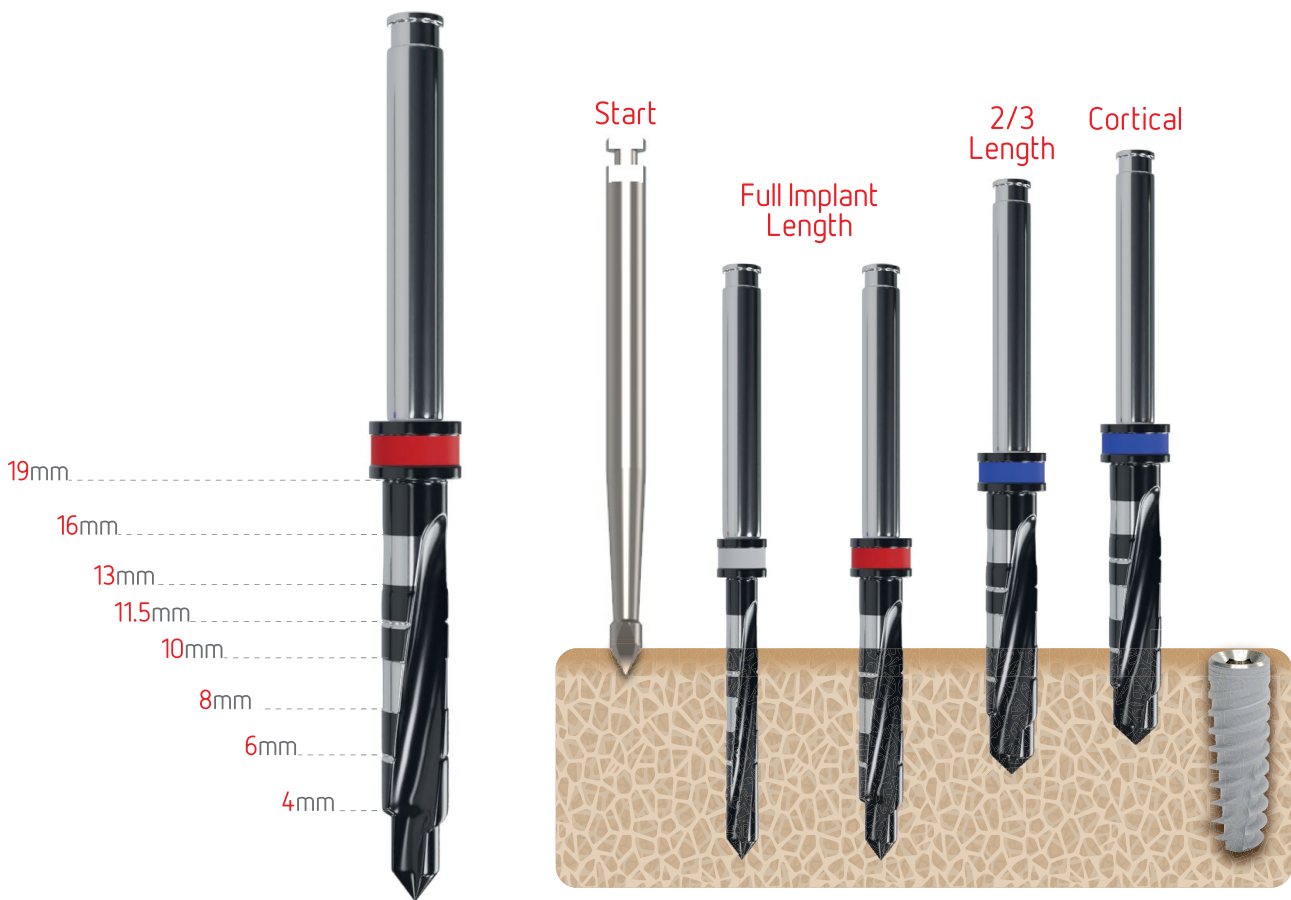
# Drilling Protocols



# Drilling Protocols



## Suggested Drilling Protocol for Bioactive Implant 13/3.75 mm



- Drilling speed (RPM): **800-1200**
- The drilling sequence is demonstrated with a 13mm implant.
- Alfa Gate drilling protocol is recommended for most clinical cases however, it is cannot replace the surgeon's judgment and professional experience.

### \* Suggested Workflow for Ti-base compatible Sirona:

1. Scan intra orally or on your model.
2. For scanning, use Alfa Gate's sirona compatible Ti-Base, use sirona's scan body size L, (sirona's Ref. 6431329 for omnicam or 6431303 for bluecam).
3. On your CAD software library choose: internal hex platform, choose: Zimmer Tapered Screw Vent 3.5mm platform.
4. Follow sirona's standard instructions for CAD design of your restoration.
5. Use standard L blocks or equivalent for milling your abutment.
6. Cement Ti-Base to the milled and sintered block using the manufacturer's cementation instructions.

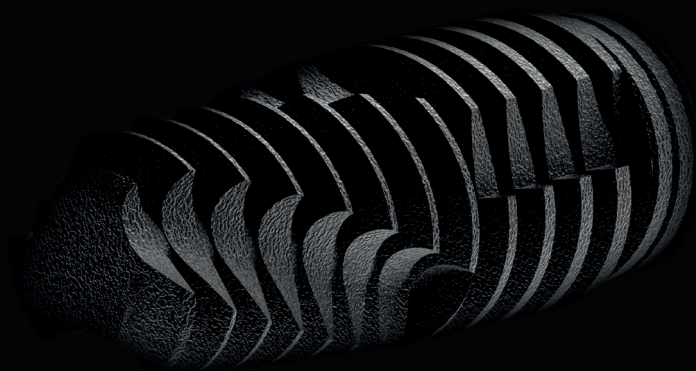


# Scan

for more detailed  
videos drilling about protocols .







Alfa Gate adheres to the most stringent international standards,  
complying with EN:ISO 13485:2003 and ISO 9001:2008

Product availability may vary between countries.



[www.alfa-gate.com](http://www.alfa-gate.com)