



**MAX**  
implant



### Cycon™ Implant

Internal hex connection implant with a single prosthetic connection for all implant diameters.

Built in platform switching assures maximum bone and tissue preservation.

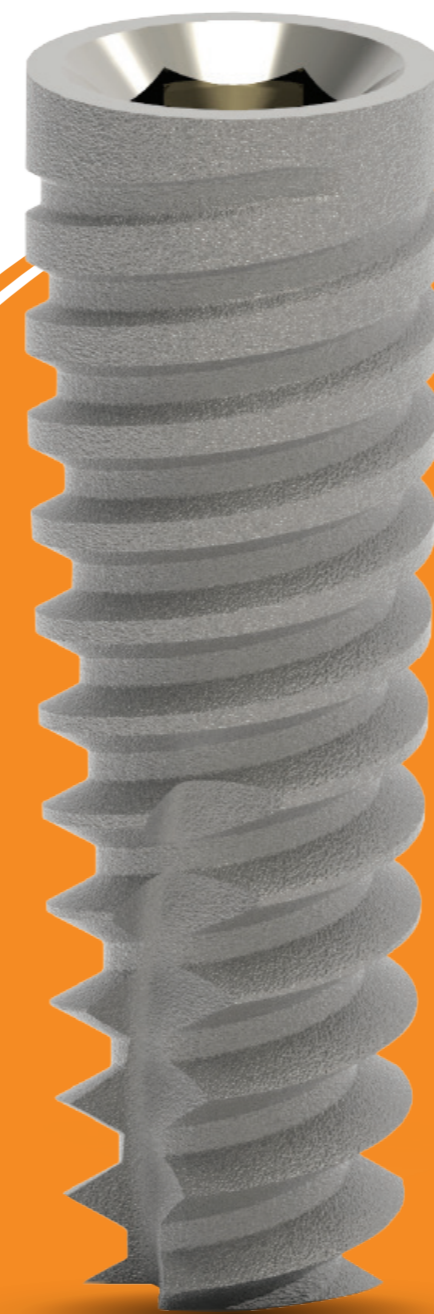
Unique CyCon™ hybrid cylindrical/conical body cuts for easy insertion while condensing bone for maximum primary stability in various bone types.



**DETERMINED TO LEAD**



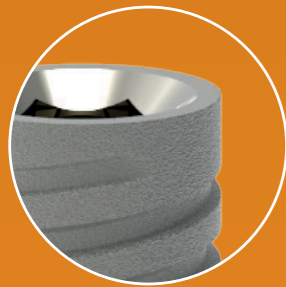
**AlfaGate**  
IMPLANTS YOU CAN TRUST



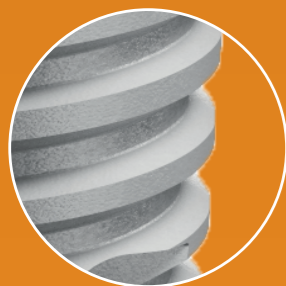
[www.alfagate.com](http://www.alfagate.com)

Cycon Catalog

**MAX**  
implant

**Platform switching:**

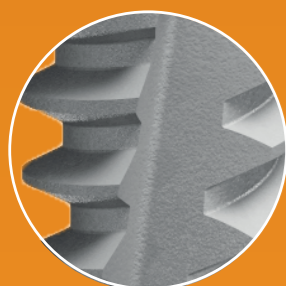
Allows maximum crestal bone preservation and excellent esthetic results.

**Dual thread:**

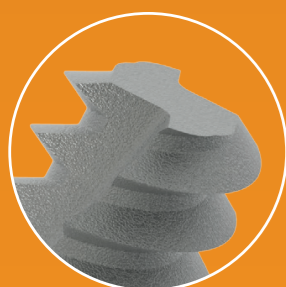
A sharp dual thread designed to provide high primary stability and support immediate loading protocols.

**Combined cylindrical and conical body:**

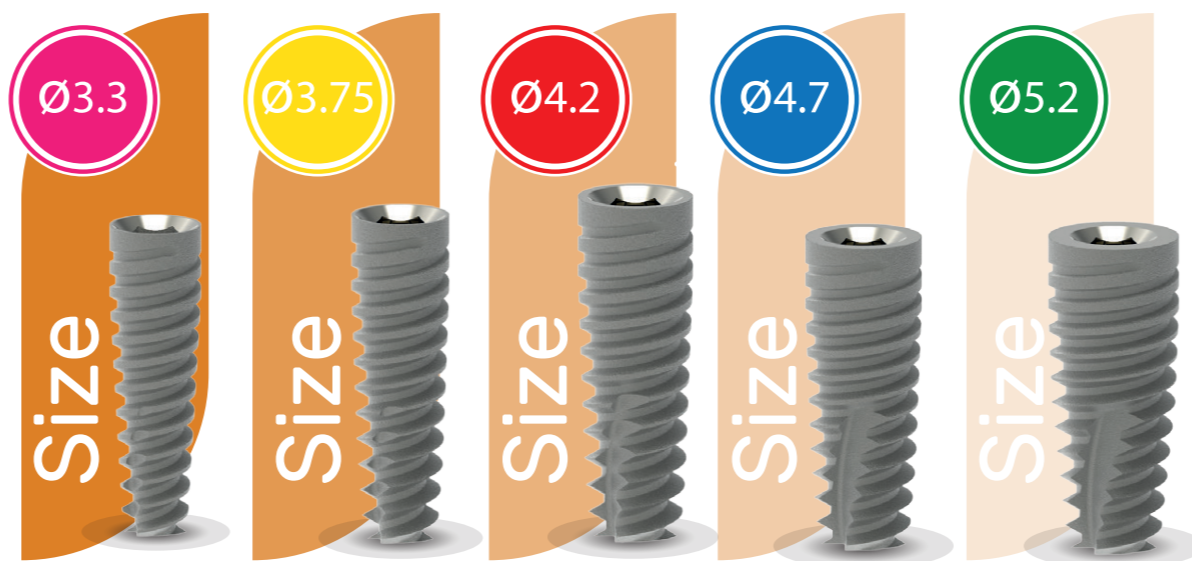
Designed to mildly compact bone while providing high primary stability.

**Apically tapered body:**

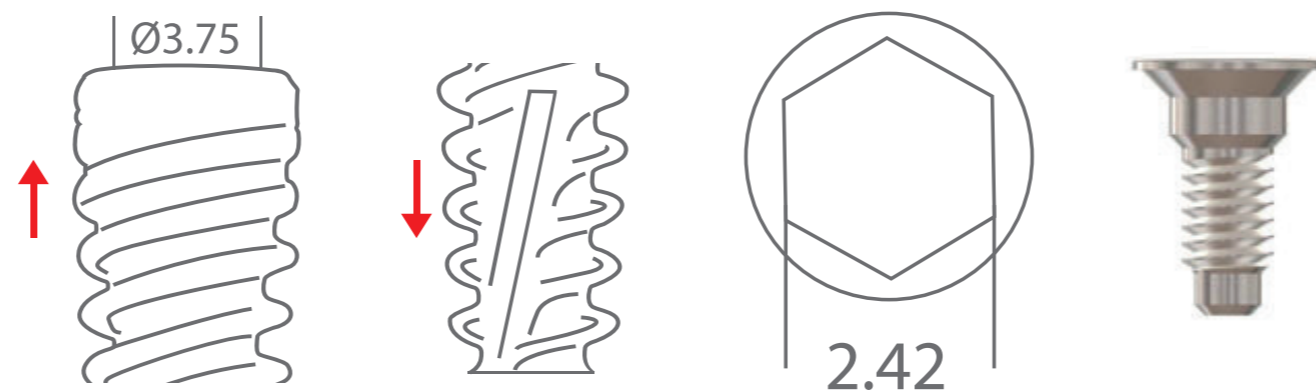
For under preparation sites, designed to provide primary stability in soft bone or fresh extraction socket.

**Flat cutting apex:**

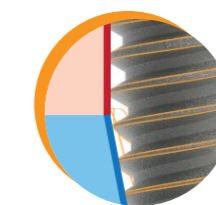
A Flat cutting apex allows for easy insertion and enables final adjustment during placement procedures



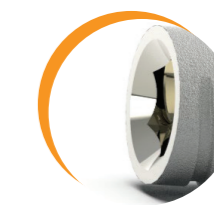
## Diameters



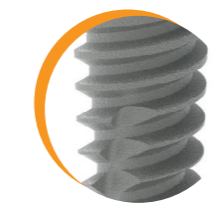
## Body Characteristics



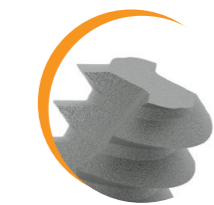
Combined Cylindrical and Conical Body



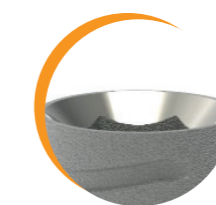
Internal Hex Connection with Conical Sealing Design



Variable Thread Design



Flat and Cutting Apex



Single Platform

Material:

Titanium Alloy Ti6Al4V ELI

Item includes:

Cover screw and implant carrier

Connection:

Screw type implant 2.42mm  
SP internal hex

Surface:

Sand blasting and Acid-Etching