



Porous Implant



SLA Surface Implant

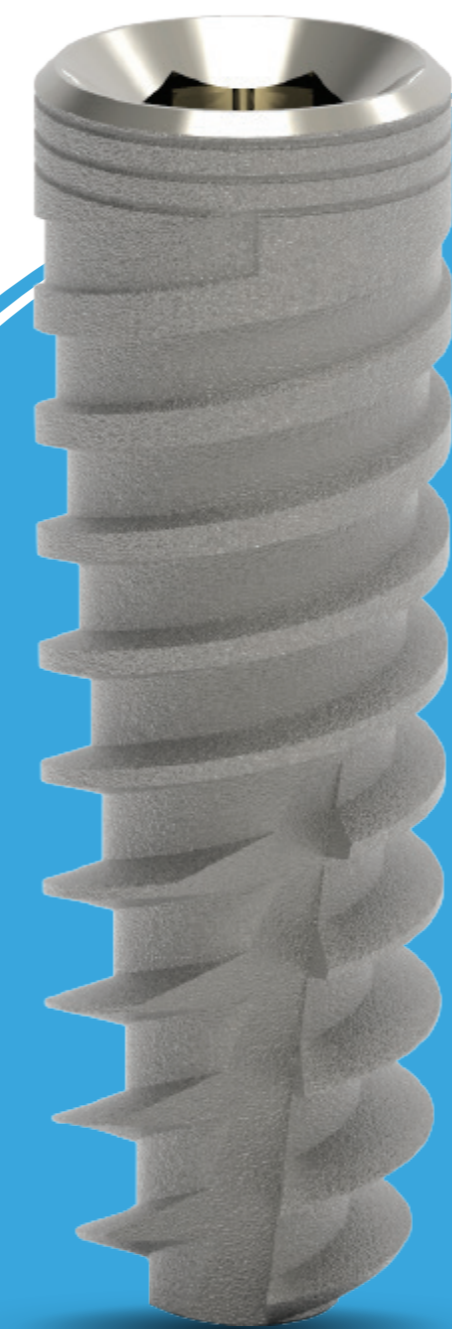
Screw type implant with internal hex connection.

A single platform for all implant diameters simplifies restorations and reduces overhead.

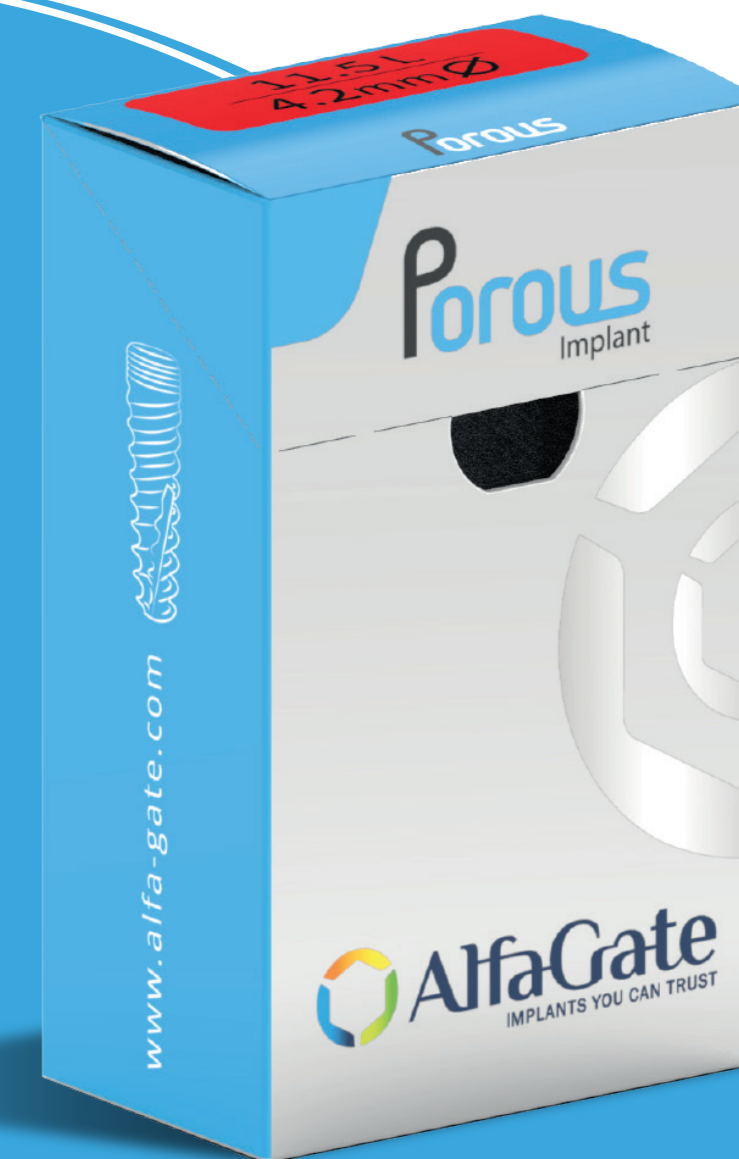
The SLA surface treatment increases the implants surface area by creating micro and nano-structures that increase bone formation and bonding



DETERMINED TO LEAD

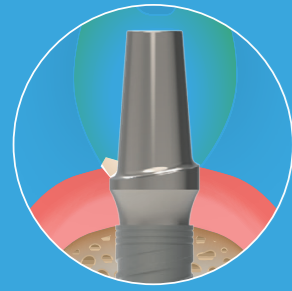


www.alfagate.com

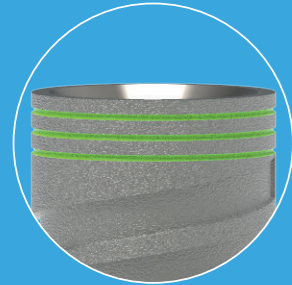


Porous Implant Catalog





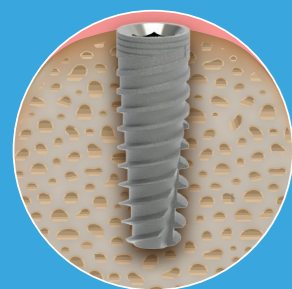
Natural looking esthetics:
Built in platform switching helps to increase soft tissue volume.



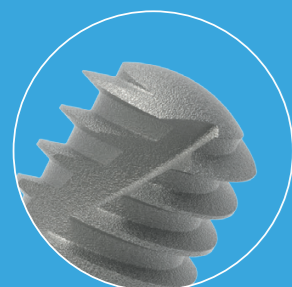
Soft tissue support:
Micro ring for maximum alveolar bone volume.



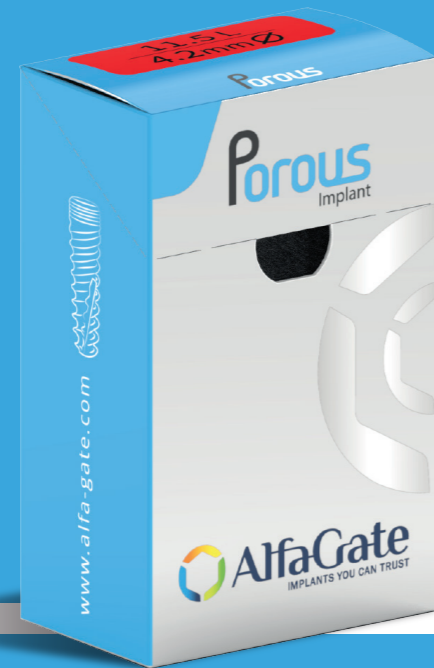
Maximum bone preservation:
Variable thread design enables self-drilling and self-tapping even in smaller osteotomies.



High primary stability:
The implant design includes a conical body, dual threads, two spiral channels, and deep especially sharp threads that ensure superior primary stability
This offers the ultimate choice in a wide range of bone types and immediate loading protocols.



Safe insertion:
Dome apex enables safe insertion.



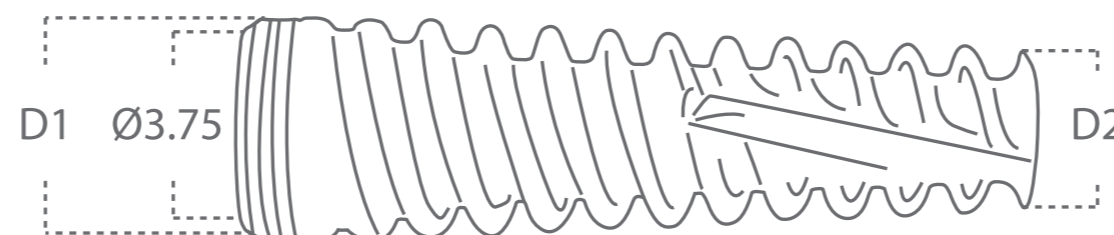
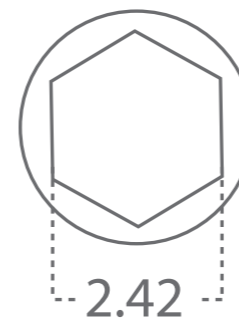
Diameters

Material
Item includes
Description

Titanium alloy ti 6Al 4V ELI | SLA Surface
Cover screw and implant carrier
Screw type implant 2.42 mm Internal hex

Ø mm 3.3 3.75 4.2 4.5 5.2

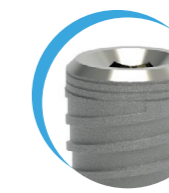
L mm 8 10 11.5 13 16



Body Characteristics



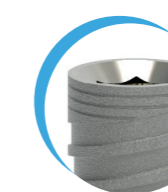
Conical Body



Single Platform



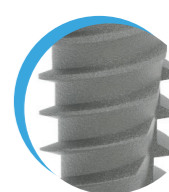
Domed Apex



Micro-rings



Switching Platform



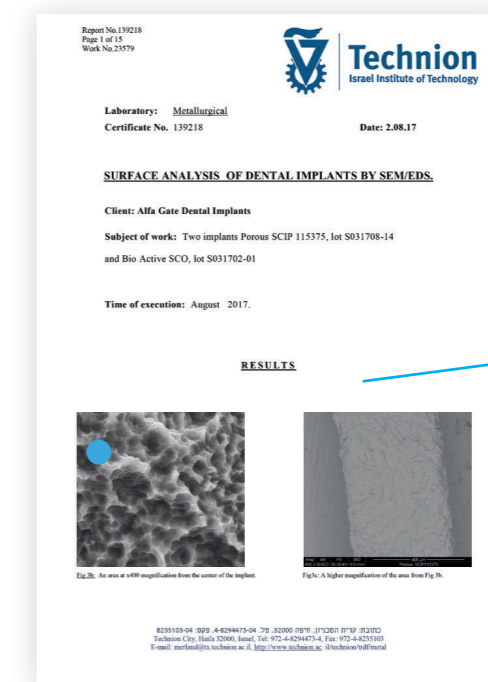
Variable Thread Design



Internal Hex Connection with Conical Sealing Design

Material:
Item includes:
Connection:
Surface:

Titanium Alloy Ti6Al4V ELI
Cover screw and implant carrier
Screw type implant 2.42mm internal hex
Sand blasting and Acid-Etching



“Tests show the Alfa-Gate Porous surface has cleanliness degree of 1 (highest level), which favors great bone anchoring, and osseo-integration, and biomechanical stability”

Topography of Porous surface micro and nano-structures which lead to increase in BIC (bone to implant contact), for better osseo-integration.

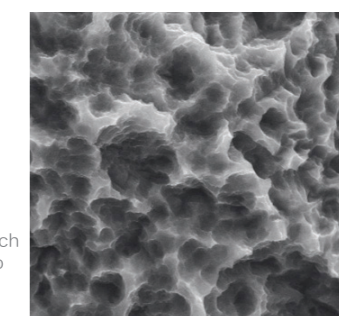


Fig 2: Topography of Porous surface.

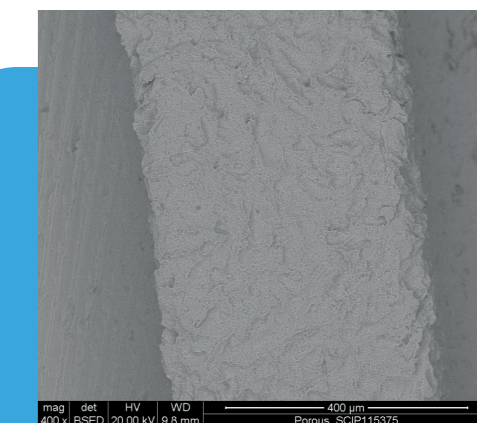


Fig 1: Porous surface Cleanliness level 1, SEM analysis.