



TRIO

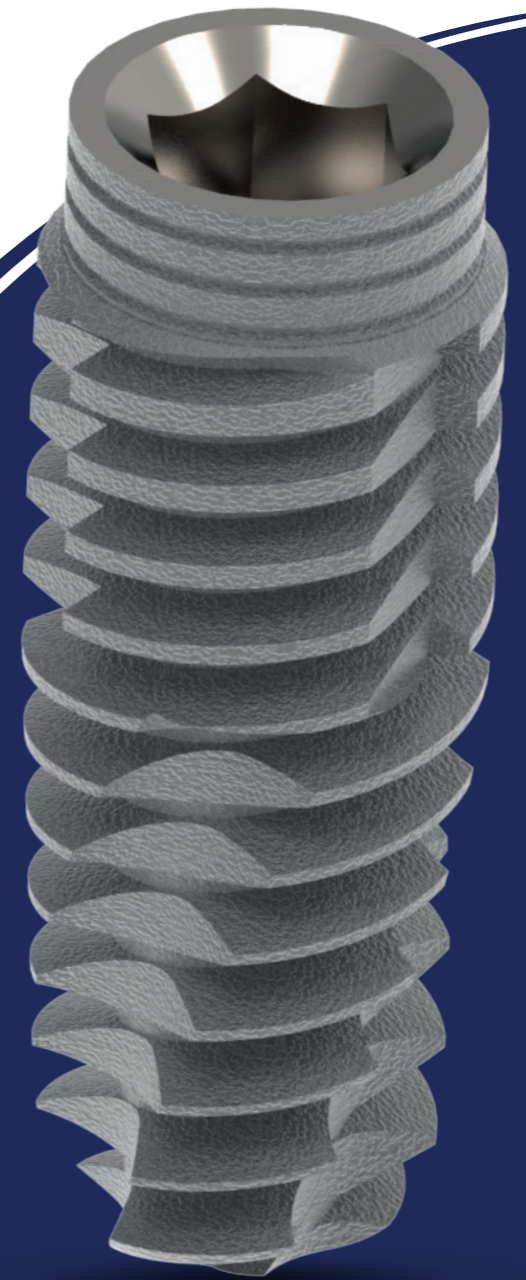
IMPLANT



Trio Implant - A Masterpiece of Arch

Following years of research and development, doctor's clinical data collection and years of market experience, Alfa Gate is proud and excited to present our revolutionary implant - **The Trio Implant.**

Trio is designed to achieve incomparable superior primary stability in all bone types. Moreover, the unique cylindrical implant thread design, along with its conical body shape accomplishes unwavering reliable results in immediate loading cases. In addition, the coronal implant design maintains peace of mind with stress-reducing in the cortical bone area.



www.alfagate.com

Trio Implant Catalogn



Body Characteristics



Single Restorative Platform

Single restorative platform in all implant diameters

Coronally Reduced Diameter

Coronally Reduced diameter for less bone stress in the cortical bone

Triple Fluted Define Bone compression

Triple flutes to improve distribution of axial forces, thus defining bone compression

Flat Active Apex

A cutting flat active apex is ideal for immediate implants

Triple Micro Rings increase BIC

Triple Micro threads that enhance bone formation and increase BIC

Triple Drilling Grooves Enable Efficient Torque Equalization

Drilling grooves enables cutting through the cortical bone for efficient insertion and torque equalization

Unique Thread Design

Unique thread design to cut and condense the bone to increase implant primary stability



Diameters

Material
Item includes
Connection
Surface

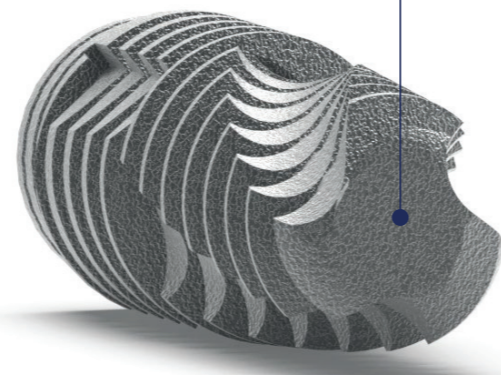
Titanium Alloy Ti 6Al 4V ELI Bioactive surface-Cap
Cover screw and implant carrier
SP Screw type implant 2.42 mm internal hex
Sand blasting and Acid-Etching

∅ mm **3.75** **4.2** **4.5** **5.2**

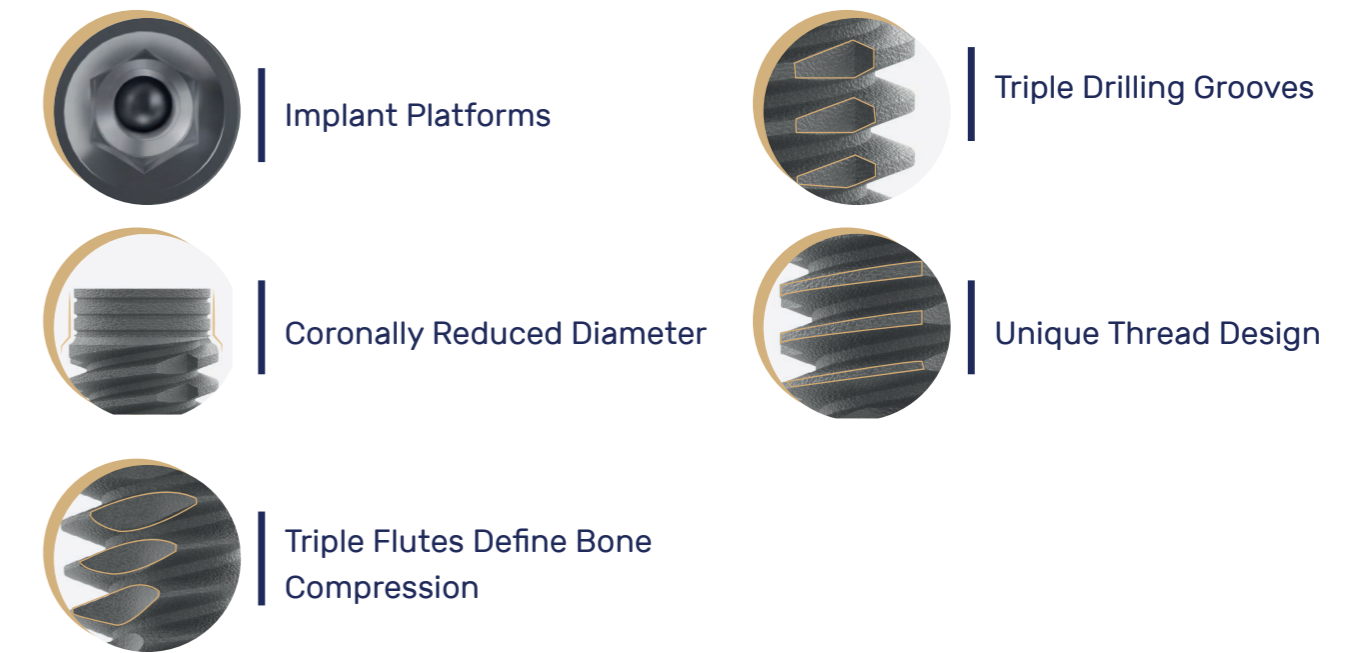
L mm **6** **8** **10** **11.5** **13** **16** **19**

Flat Active Apex

A cutting flat active apex is ideal for immediate implants



Body Characteristics



SLA Surface

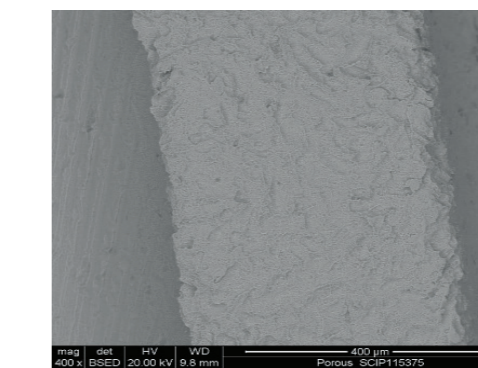


Fig1: An area at x400 magnification from the center of the implant.

Trio implant has the cleanest surface technology to increase the effectiveness of successful long-term osseointegration

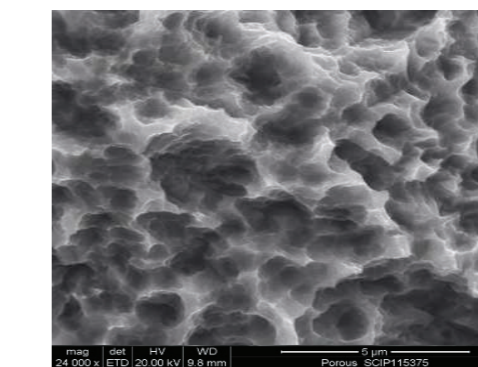


Fig2: A higher magnification of the area from Fig1

The unique implant topography made of micro and nano-structures leads to great bone anchoring and biomechanical stability due to the BIC (Bone to Implant Contact).

* According to research conducted by the Technion Institution that authenticates this claim in 2017.

TRIO