



AlfaGate

IMPLANTS YOU CAN TRUST



PRODUCT CATALOG
INTERNAL HEX

INDEX

<i>Company Profile</i>	4
<i>Our Advantages</i>	5
<i>Implants</i>	6-21
Bioactive	8-11
Trio	12-13
Max	14-15
Porous	16-17
S-line	18-19
Patro	20-21
<i>Packaging & Handling</i>	22-23
<i>Prosthetics Options</i>	24-41
S-line Prosthetic	26
Multi-Unit	27
Ball attachment	28
Alfa-Lock	29
CAD/CAM	30
SP Prosthetic	31-34
CAD/CAM	35
Multi-Unit	36-37
Ball attachment	38-39
Alfa-Lock	40-41

<i>Surgical Kits & Instruments</i>	42-53
Advanced Kit	44-45
Premium Kit	46-47
Prime Kit	48
Patro Kit	49
Surgical Instruments & Tools	50-52
Surgical Drills	53
<i>Alfa Bone</i>	54
<i>Alfa Motor</i>	55
<i>Alfa Guide</i>	56-59
<i>Drilling Protocols</i>	60-64
Bioactive / S-line	61
Trio / Max	62
Porous / Patro	63
Drilling Chart Reference	64



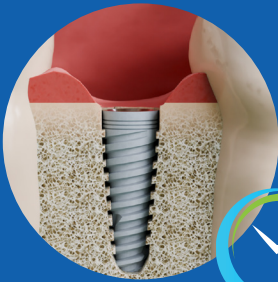
COMPANY PROFILE

Alfa Gate has more than 28 years of global success in manufacturing and supplying high-quality dental implants and prosthetic solutions curated to all dentists.

Our implant assortment meticulously provides technological and revolutionary dental solutions suited for dentists to achieve the most optimal results. We offer innovative dental implants, CAD/CAM solutions, Alfa Guide Surgical System, Single and Multi-Unit, and every prosthetic variation. We emphasize our collaboration with dentists by offering tailored education programs at International Alfa Gate Academy, in addition to consultancy and support services whenever needed. Alfa Gate strives for excellence by modernizing the dental industry with continuous product innovations. The effectiveness and premium-quality performance of our products are a result of successful R&D that ensures the highest quality. Our brand is available in over 54 countries worldwide including, the USA, Latin America, Eastern Europe, Central Europe, the Middle East and Asia.



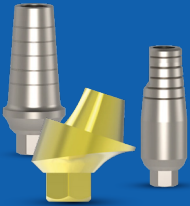
OUR ADVANTAGES



Bioactive implant has a unique surface as the CaP technology revolutionized the dental world by reducing **healing time** to 6- 10 weeks.



Our Team consists of **experienced dentists** developing products catered to doctors' best interests.



Wide variety of prosthetic options to complete every restorative procedure.



A single key for our **entire range** of prosthetic parts.



Numerous scientific studies including clinical trials conducted in established European universities **authenticate** our claims.



Alfa Gate Surgical Kits offer the **exact tools needed** for every case in a convenient and accurate layout.

IMPLANTS

INTERNAL HEX

Bioactive 8-11

Trio 12-13

Max 14-15

Porous 16-17

S-line 18-19

One-Piece

Patro 20-21



+28

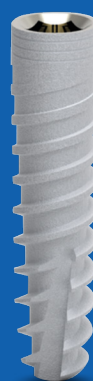
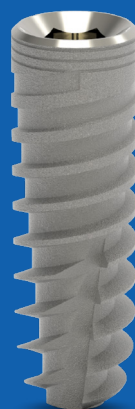
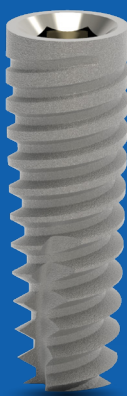
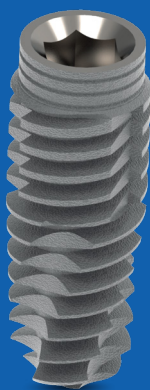
Years Of Experience

+54

Countries

+800

Product



Bioactive
SCI Implant

TRIO
IMPLANT

MAX
implant

Porous
Implant

S-line
Narrow Implant

Patro
Flexible Implant

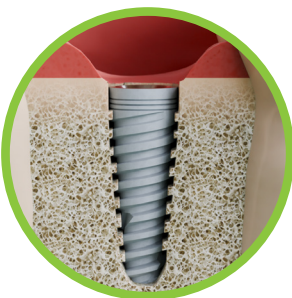
Alfa Gate revolutionizes the dental world with Bioactive implant **hydrophilic technology** that has a proven **higher success** rate. Bioactive is the ideal choice for **compromised** cases as it proved to have an **expedited recovery period** predominantly in challenging cases.



Bioactive has a completely resorbable **calcium-phosphate surface**.



The implant's **hydrophilic** surface attracts the stem cells.



The osseoinductive characteristics of the surface results in successful osseointegration and improved implant anchoring.



Bioactive's outstanding characteristics accelerate healing time up to **6-10 weeks** instead of 3-6 months post-operation.





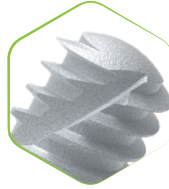
BODY CHARACTERISTICS



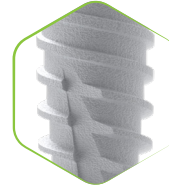
Conical
Body



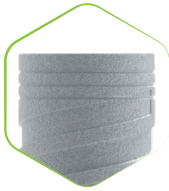
Single
Platform



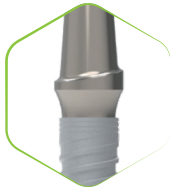
Domed
Apex



Variable
Thread
Design



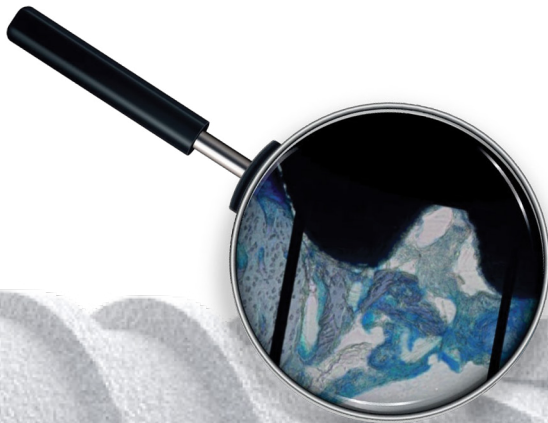
Micro-
rings



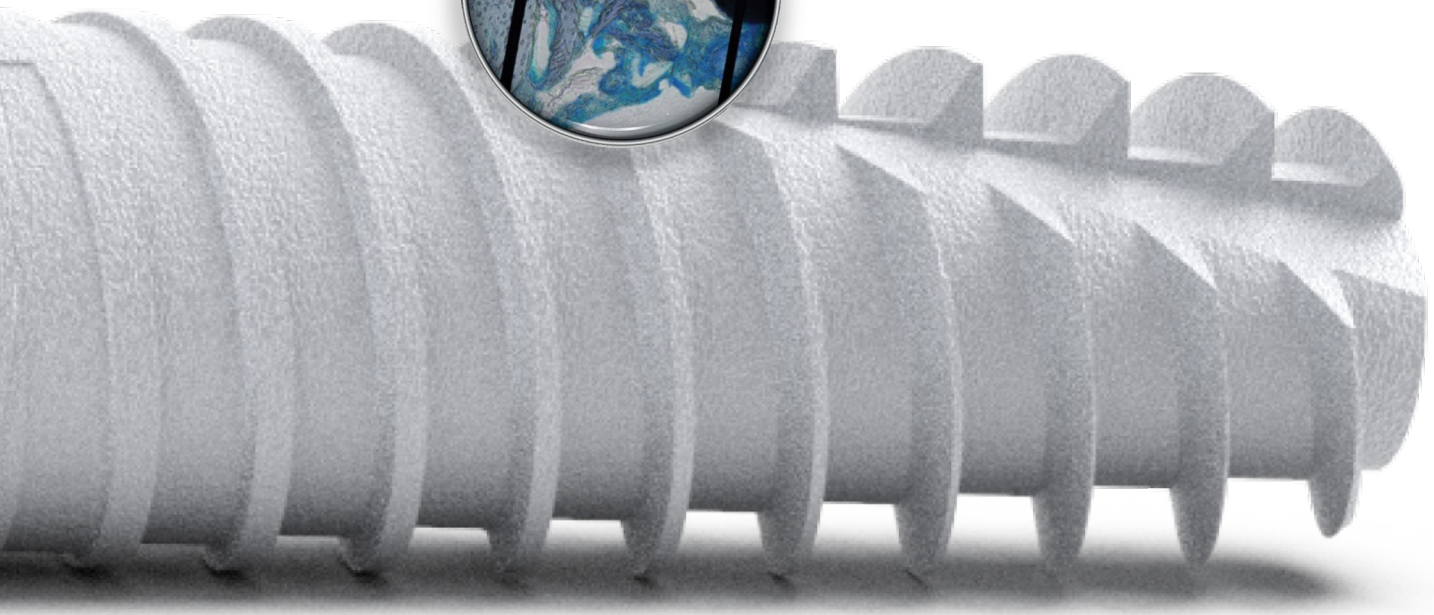
Switching
platform

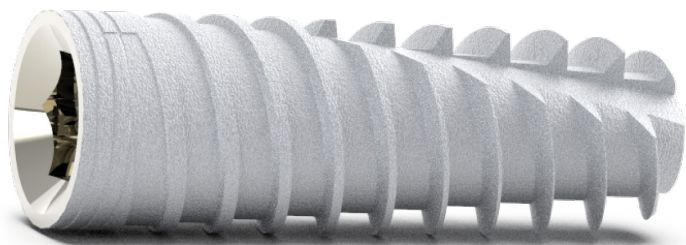


Internal Hex Connection
with Conical Sealing Design




The **hydrophilic CaP surface** is fully resorbable, ensuring optimal outcomes





Material:
Item includes:
Connection:
Surface:

Titanium Alloy Ti 6Al 4V ELI | CaP
Cover screw and implant carrier
 Screw type implant 2.42 mm internal hex
Sand blasting and Acid-Etching-Bioactive surface CaP



Length		6mm	8mm	10mm	11.5mm	13mm	16mm
Diameter							
		-	SCI833	SCI1033	SCI11533	SCI1333	SCI1633
		-	SCI8375	SCI10375	SCI115375	SCI13375	SCI16375
		SCI642	SCI842	SCI1042	SCI11542	SCI1342	SCI1642
		SCI647	SCI847	SCI1047	SCI11547	SCI1347	SCI1647
		SCI652	SCI852	SCI1052	SCI11552	SCI1352	SCI1652
		SCI66	SCI86	SCI106	SCI1156	SCI136	-

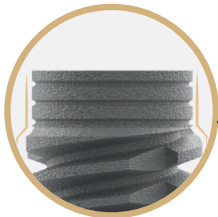
TRIO

IMPLANT

Alfa Gate is proud and excited to present our revolutionary and incomparable TRIO Implant. The implant proved to be a successful solution suitable for all bone types that achieves superior primary stability.

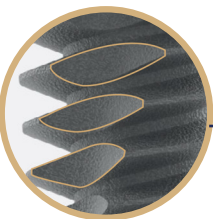
Triple Micro Rings increase BIC

Triple Micro Rings that enhance bone formation and increase BIC



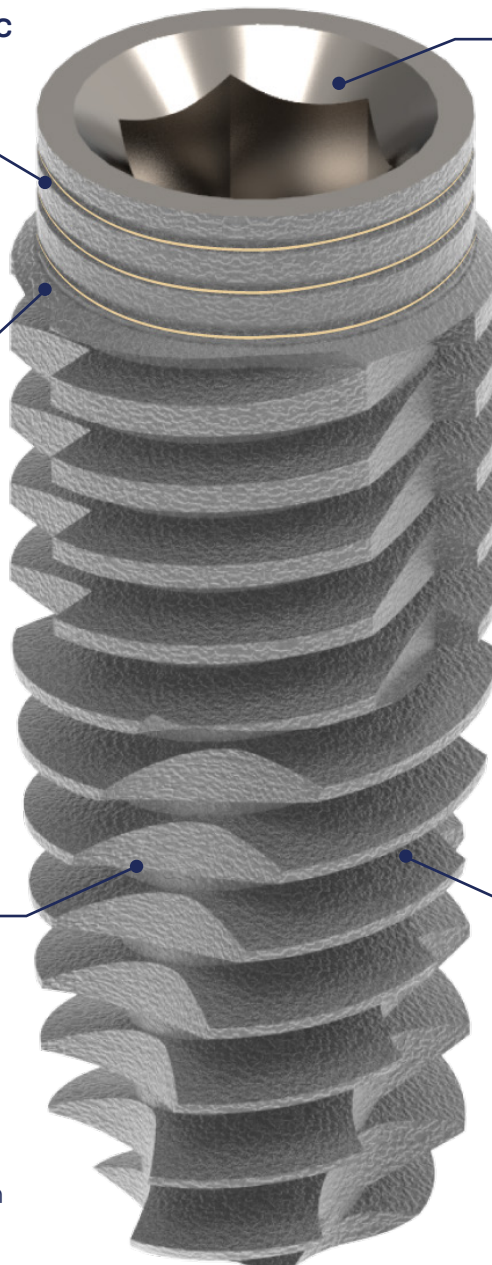
Coronally Reduced diameter

for less bone stress in the cortical bone



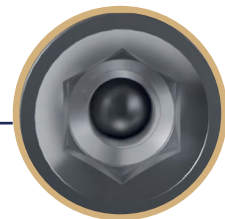
Triple Flutes Define Bone Compression

Triple flutes to improve distribution of axial forces, thus defining bone compression



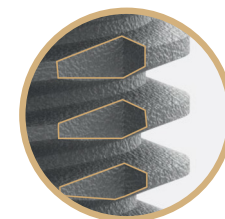
Implant Platforms

Standard Platform for all implant diameters 2.42mm .



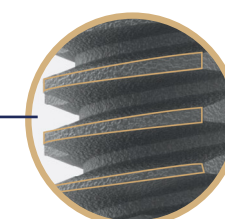
Triple Drilling Grooves

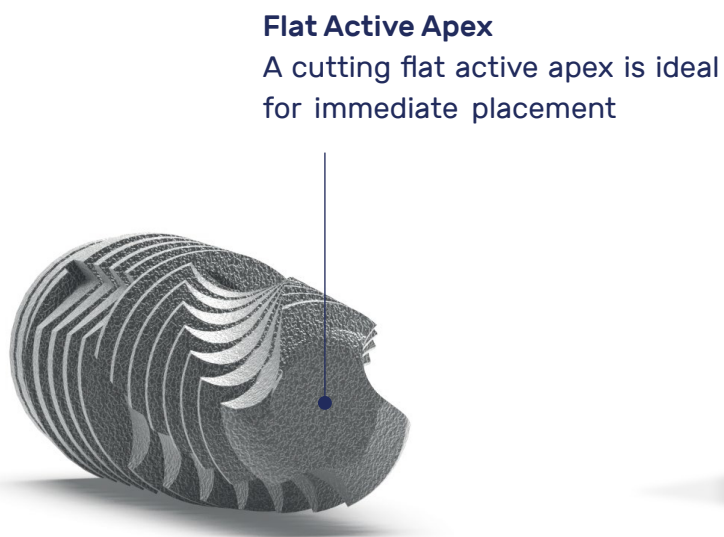
Drilling grooves enables cutting through the cortical bone for efficient insertion and torque equalization




Unique Thread Design

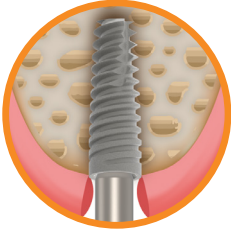
to cut and condense the bone to increase implant primary stability



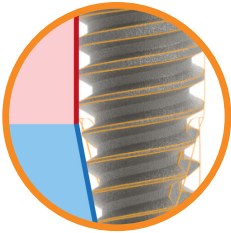


Material: Titanium Alloy Ti 6Al 4V ELI | SLA surface
Item includes: Cover screw and implant carrier
Connection:  Screw type implant 2.42 mm internal hex
Surface: Sand blasting and Acid-Etching

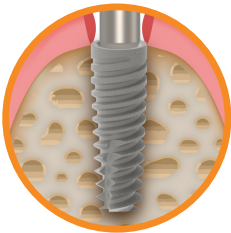
		Length						
Diameter		6mm	8mm	10mm	11.5mm	13mm	16mm	19mm
		DFCI6375	DFCI8375	DFCI10375	DFCI115375	DFCI13375	DFCI16375	DFCI19375
		DFCI642	DFCI842	DFCI1042	DFCI11542	DFCI1342	DFCI1642	DFCI1942
		DFCI647	DFCI847	DFCI1047	DFCI11547	DFCI1347	DFCI1647	-
		DFCI652	DFCI852	DFCI1052	DFCI11552	DFCI1352	DFCI1652	-



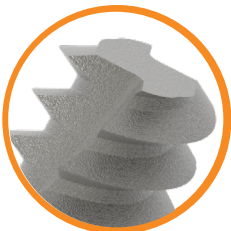
MAX is the best implant for **immediate placement**.



The unique Cycon™ body consists of **combined cylindrical and conical shapes**.



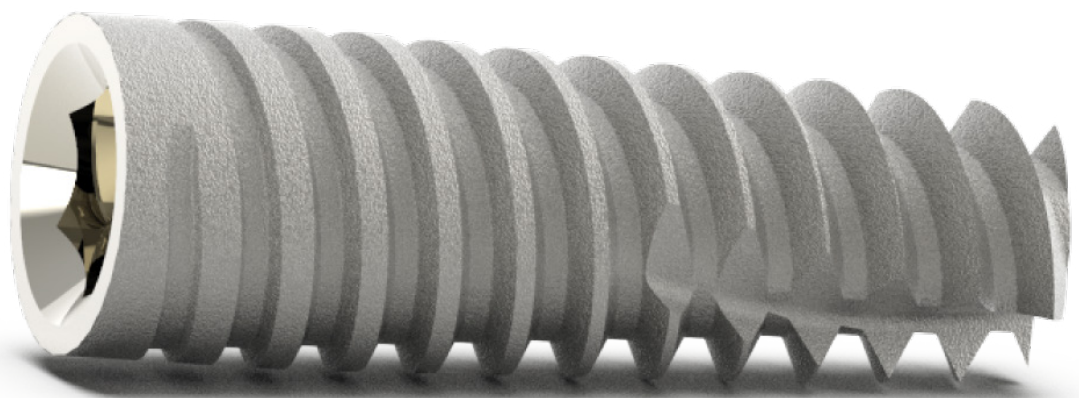
Thus, MAX is designed to achieve **superior primary stability**.



The **flat cutting apex** assures fast and soft insertion in the bone.

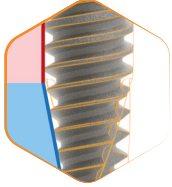


The implant internal hex connection has a **single prosthetic connection** for all implant diameters.





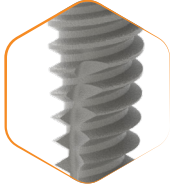
BODY CHARACTERISTICS



Combined Cylindrical and
Conical Body



Flat and Cutting
Apex



Variable Thread Design




Single
Platform



Internal Hex Connection with Conical Sealing Design

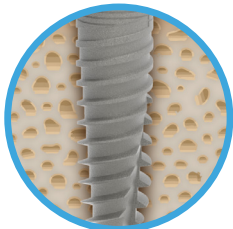
Material:
Item includes:
Connection:
Surface:

Titanium Alloy Ti 6Al 4V ELI
Cover screw and implant carrier
 Screw type implant 2.42 mm internal hex
Sand blasting and Acid-Etching

		Length					
Diameter		6mm	8mm	10mm	11.5mm	13mm	16mm
		-	MX833	MX1033	MX11533	MX1333	MX1633
		-	MX8375	MX10375	MX115375	MX13375	MX16375
		MX642	MX842	MX1042	MX11542	MX1342	MX1642
		MX647	MX847	MX1047	MX11547	MX1347	MX1647
		MX652	MX852	MX1052	MX11552	MX1352	MX1652

Porous

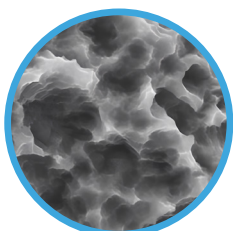
Implant



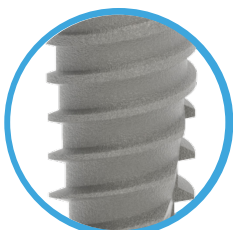
Porous implant offers a solution for a **wide** range of clinical cases.



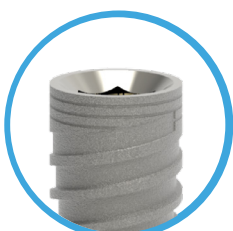
The lower implant body has a **domed apex** to allow safer dental work near sensitive anatomical structures.



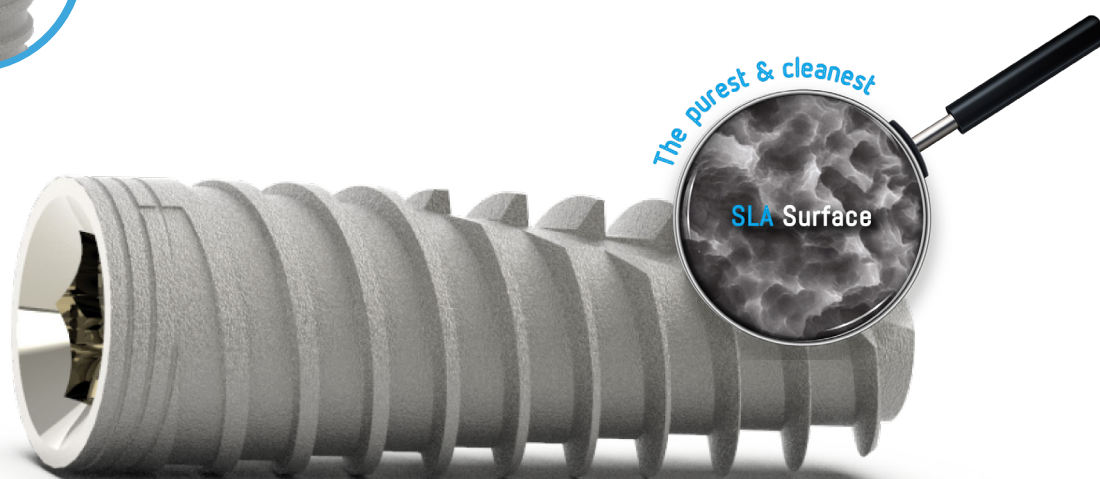
In addition, it has the **cleanest surface**, which favors successful long-term osseointegration.



The implant's variable threads accomplish **excellent primary stability**.



Micro rings are implemented for **maximal cortical bone preservation**.





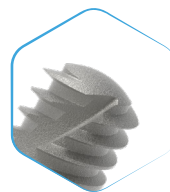
BODY CHARACTERISTICS



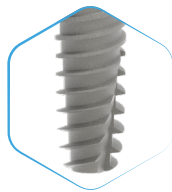
Conical
Body



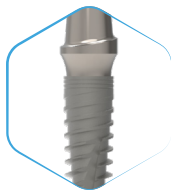
Single
Platform



Domed
Apex



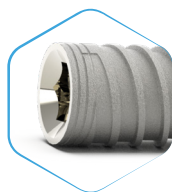
Variable Thread
Design



Switching
Platform




Micro -
rings



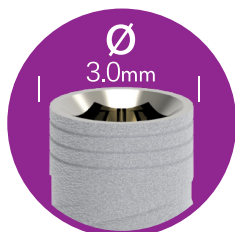
Internal Hex Connection with Conical Sealing Design

Material:
Item includes:
Connection:
Surface:

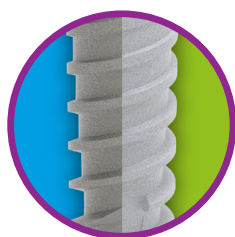
Titanium Alloy Ti 6Al 4V ELI
Cover screw and implant carrier
 Screw type implant 2.42 mm internal hex
Sand blasting and Acid-Etching

Length		6mm	8mm	10mm	11.5mm	13mm	16mm	19mm
Diameter								
Ø 3.3		-	SCIP833	SCIP1033	SCIP11533	SCIP1333	SCIP1633	-
Ø 3.75		-	SCIP8375	SCIP10375	SCIP115375	SCIP13375	SCIP16375	SCIP19375
Ø 4.2		SCIP642	SCIP842	SCIP1042	SCIP11542	SCIP1342	SCIP1642	SCIP1942
Ø 4.7		SCIP647	SCIP847	SCIP1047	SCIP11547	SCIP1347	SCIP1647	-
Ø 5.2		SCIP652	SCIP852	SCIP1052	SCIP11552	SCIP1352	SCIP1652	-
Ø 6.0		SCIP66	SCIP86	SCIP106	SCIP1156	SCIP136	-	-

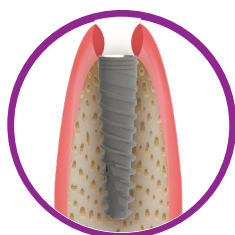
S-line



S-line is the optimal **3.0mm** diameter implant for narrow and tight ridges.



It is available in two surfaces:
the unique Bioactive **CaP hydrophilic surface**,
and the **SLA surface**



The implant **eliminates** the need for bone augmentation in **narrow ridges**.



It allows for **all crown restoration** options, such as screw-retained, cemented, ball attachment and Multi-Unit.



The complete prosthetic solution for S-line implant includes **CAD/CAM** products.



The implant's connection with its internal screw is specifically designed to accomplish **a high fatigue point of 325 Ncm**.





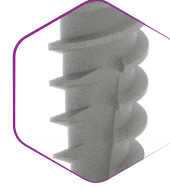
BODY CHARACTERISTICS



Conical
Body



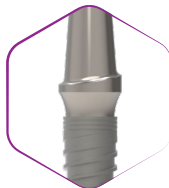
Domed
Apex



Variable Thread
Design



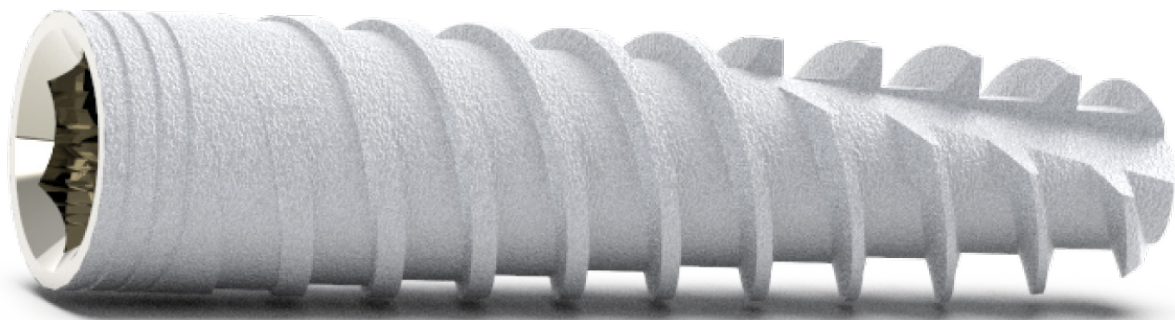
Micro -
rings



Switching
Platform






Internal Hex Connection
with Conical Sealing
Design



Material:
Item includes:
Connection:

Titanium Alloy Ti 6Al 4V ELI | **Bioactive Surface-CaP** / **SLA Surface**
Cover screw and implant carrier
Screw type implant 2.0 mm internal hex

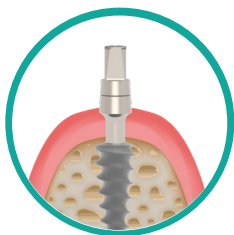
Length		10mm	11.5mm	13mm	16mm
Diameter					
Ø 3.0		S-L103	S-L1153	S-L133	S-L163
		surface: Bioactive Surface-CaP			
Ø 3.0		S-LP103	S-LP1153	S-LP133	S-LP163
		surface: Sand blasting and Acid-Etching		SLA	



Patro offers the perfect solution for a unique one-piece implant with its flexible neck design that reaches **up to 25° angulation**.



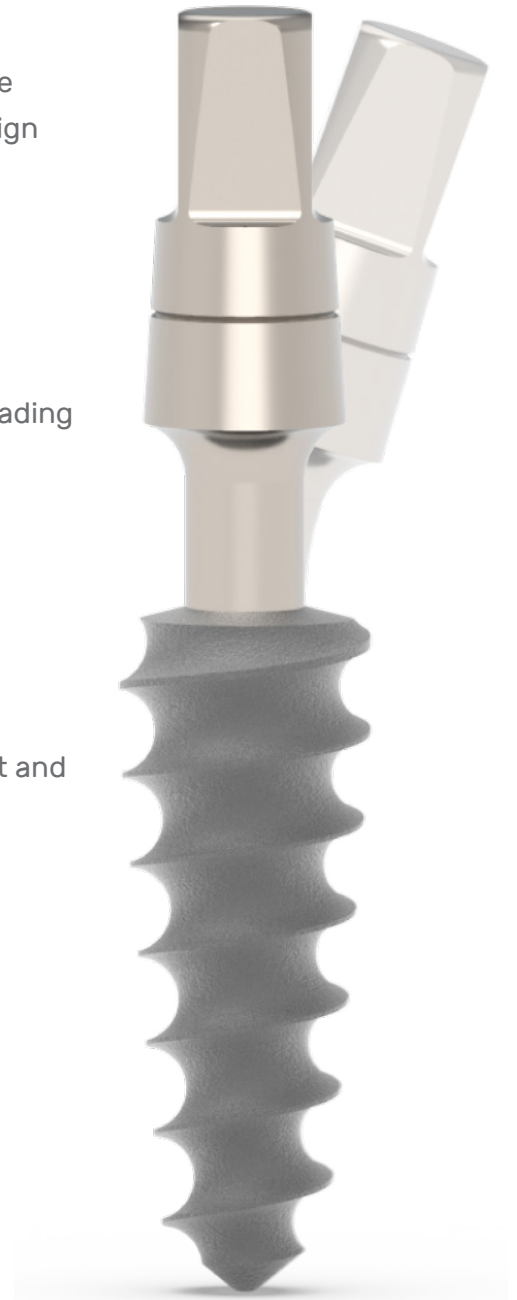
The implant's versatility offers immediate loading in **multiple-unit restorations**.



Conveniently it can be placed in the tightest and **narrowest ridges**.

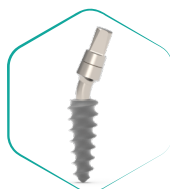


A wide range of diameters from 3.0mm up to the **special 4.7mm**.

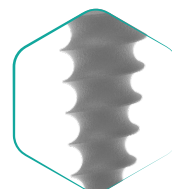




BODY CHARACTERISTICS



Flexible
Neck



Sharp and
Deep Threads

Material:
Item includes:
Connection:
Surface:

Titanium alloy Ti 6Al 4V ELI
Implant carrier
One-Piece implant with an integrated abutment
Sand blasting and Acid-Etching

		Length					
Diameter		6mm	8mm	10mm	11.5mm	13mm	16mm
Ø 3.0		-	-	PTR103	PTR1153	PTR133	PTR163
Ø 3.3		-	PTR833	PTR1033	PTR11533	PTR1333	PTR1633
Ø 3.75		PTR6375	PTR8375	PTR10375	PTR115375	PTR13375	PTR16375
Ø 4.2		PTR642	PTR842	PTR1042	PTR11542	PTR1342	PTR1642
Ø 4.7		PTR647	PTR847	PTR1047	PTR11547	PTR1347	PTR1647

Platform One-Piece

One-Piece Implant Analog

Height mm | 21mm
Ref. | AGM-215

Material: Stainless Steel



Transfer for One-Piece Implant

Height mm | 11mm
Ref. | AGM-306

Material: Plastic



HANDLING

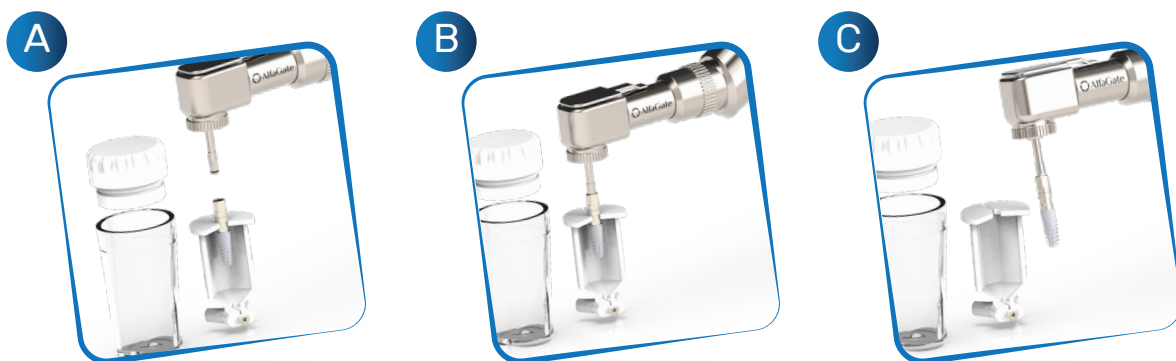
Alfa Gate FIT carrier makes it possible to insert all implants regardless of the platform, with a single set of keys.



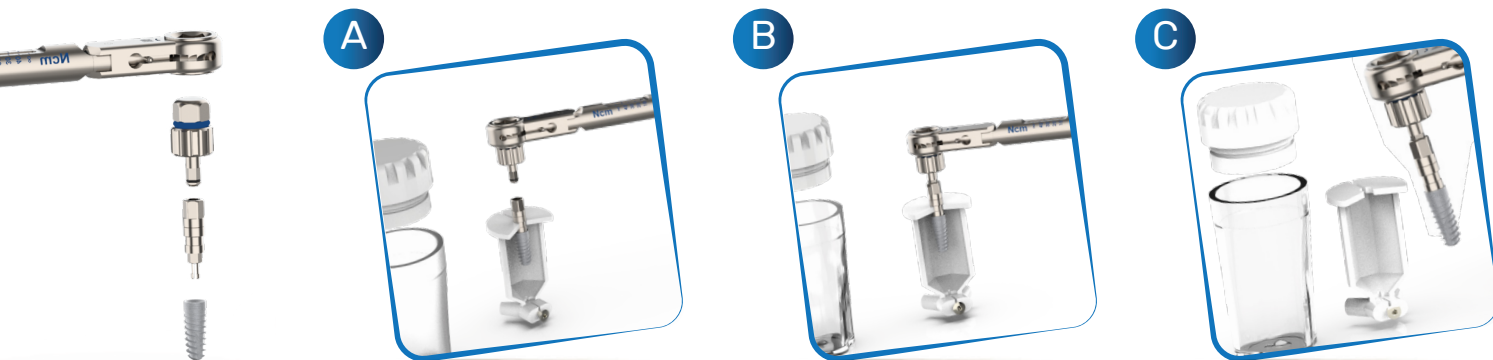
**Same
Carrier
for all
implants**

The Fit Carrier must be used with torque insertion up to 35Ncm!

Hand-piece insertion



Ratchet insertion

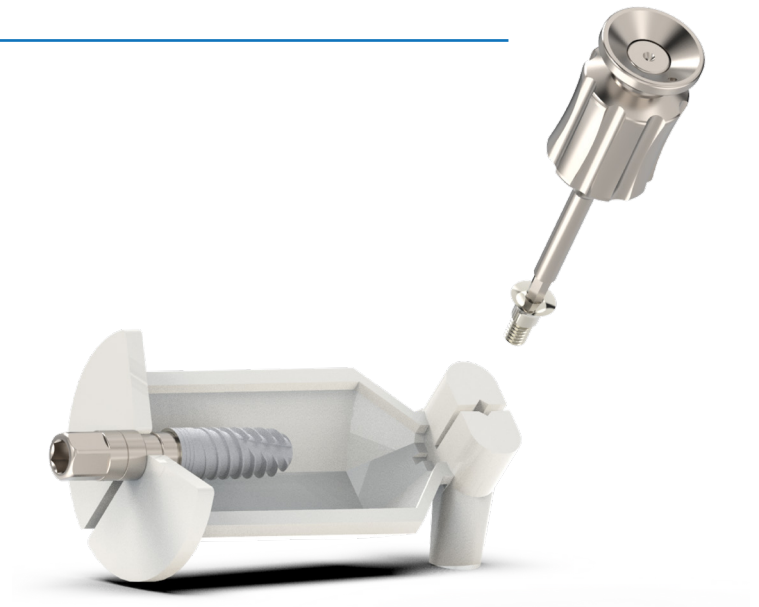


Manual insertion



***The final insertion is done with the matching insertion key!**

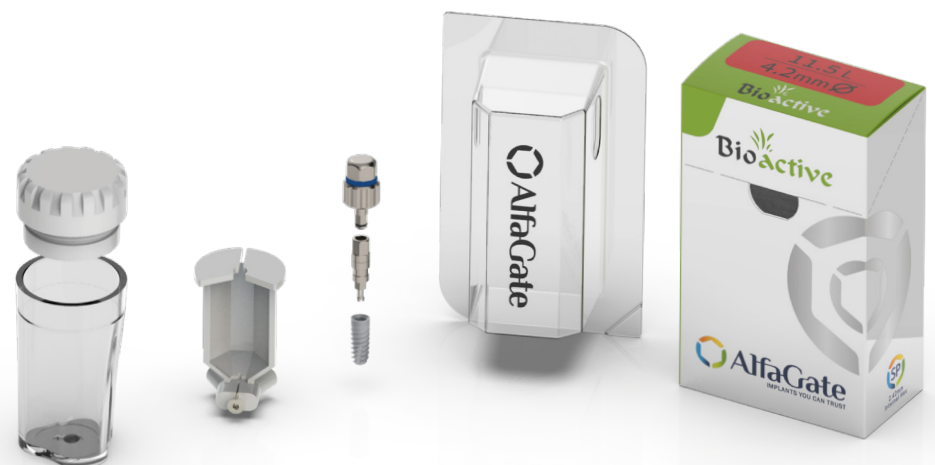
Cover Screw



Anti-slippery ring



Packaging



Important: to ensure correct and safe transfer of the implant and optimal insertion, the implant insertion key must be fully inserted into the upper hexagon of the mount.

PROSTHETICS

OPTIONS

S-line *S-line Platform 2.0mm*

<i>Prosthetic</i>	26
<i>Multi-Unit</i>	27
<i>Ball Attachment</i>	28
<i>Alfa-Lock</i>	29
<i>CAD/CAM</i>	30

SP *Standard Platform 2.42mm*

<i>Prosthetic</i>	31-34
<i>CAD/CAM</i>	35
<i>Multi-Unit</i>	36-37
<i>Ball Attachment</i>	38-39
<i>Alfa-Lock</i>	40-41



PROSTHETICS

Healing Cap Ø3.7mm

Height mm	2mm	3mm	4mm	5mm
Ref.	AGM-203-2S	AGM-203-3S	AGM-203-4S	AGM-203-5S



Additional Info: Recommended torque - manual only light finger tight (5-10 Ncm) using hand driver 1.25 mm.

Material: Titanium

Impression Transfers

Description	for open tray impression	for closed tray impression click connection	for closed tray impression screw connection
Height mm	14mm	9mm	11mm
Ref.	AGM-301-SL	AGM-302-SL	AGM-303-SL



Additional Info: Recommended torque - manual only light finger tight (5-10 Ncm) using hand driver 1.25 mm.

Material: Stainless Steel

Implant Analog

Description	S-line implant analog with internal hex 2.0mm
Height mm	12mm
Ref.	AGM-214-SL



Material: Titanium

Abutments

Description	Straight	15° angulated	Shoulder - 1mm	Shoulder - 2mm	Shoulder - 3mm
Height mm	10mm	11mm	10mm	10mm	10mm
Ref.	AGM-100-S	AGM-115-S	AGM-602-1S	AGM-602-2S	AGM-602-3S



Additional Info: Recommended torque - 20 Ncm.

Material: Titanium

Direct Prosthetic Screw

Description	S-line screw
Height mm	7.7mm
Ref.	AGM-202S



Additional Info: Recommended torque - 20 Ncm.

Material: Titanium

Temporary Abutments

Description	Hex	Non-Hex
Height mm	10mm	10mm
Ref.	AGM-903-SL	AGM-904-SL



Additional Info: Recommended torque - 15 Ncm. - Supplied with prosthetic screw

Material: PEEK

Plastic Abutments for Casting Height 11mm

Description	Hex	Non-Hex
Ref.	AGM-P6	AGM-P5



Additional Info: Recommended torque - 20 Ncm. - Supplied with prosthetic screw .

Material: Plastic

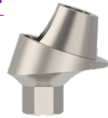
Straight Multi-Unit

Height mm	1mm	2mm	3mm	4mm	5mm
Ref.	AGM-700-1-S	AGM-700-2-S	AGM-700-3-S	AGM-700-4-S	AGM-700-5-S



17° Angulated Multi-Unit

Height mm	1.5mm
Ref.	AGM-717-1-S



Multi-Unit Prosthetics

Description	Transfer open tray	Analog	Healing Cap
Height mm	22mm	12mm	5mm
Ref.	AGM-508	AGM-507	AGM-509



Additional Info: Recommended torque - 5 Ncm. - Using hex driver 1.25 mm.

Material: Stainless Steel / Titanium

Multi-Unit Prosthetics

Description	Prosthetic screw - 2pcs	Temporary cylinder	Plastic cylinder	Temporary PEEK cylinder
Height mm	4.5mm	12mm	12mm	12mm
Ref.	AGM-506-SC	AGM-505	AGM-506	AGM-512



Additional Info: Recommended torque - manual only light finger tight (5-10 Ncm) using hand driver 1.25 mm.

Material: Titanium / Plastic / Peek

CAD/CAM Prosthetics

Scan Post

Height mm	7mm
Material	PEEK
Ref.	SBMU



Digital Analog

Height mm	10mm
Material	Stainless Steel
Ref.	AD-MU



Non-Engaging Ti-Base

Height mm	0.3mm
Material	Titanium
Ref.	TBMU



Multi-Unit Sets

Description	Straight Multi-Unit				
Height mm	1mm	2mm	3mm	4mm	5mm
Ref.	AGM-700-1-SK	AGM-700-2-SK	AGM-700-3-SK	AGM-700-4-SK	AGM-700-5-SK

Description	17° Angulated Multi-Unit				
Height mm	1.5mm				
Ref.	AGM-717-1-SK				

All Multi-Unit Sets include:

Description	Transfer	Analog	Healing Cap
Ref.	AGM-508	AGM-507	AGM-509

Description	Screw - 2pcs	Temporary cylinder	Plastic cylinder
Ref.	AGM-506-SC	AGM-505	AGM-506



Ball Attachment Ø3.7mm






Height mm	1mm	2mm	3mm	4mm	5mm
Ref.	AGM-105-1S	AGM-105-2S	AGM-105-3S	AGM-105-4S	AGM-105-5S

Additional Info: Recommended torque - 20 Ncm. - Using hex driver 1.25 mm.

Material: Titanium



Ball Attachment Prosthetics

Description	Standard plastic cap		Soft plastic cap	
Ref.	AGM-105-P		AGM-105-PS	
Hard plastic cap				
AGM-105-PH		Metal housing		Protective disk
		AGM-105-M		AGM-105-D
				

Ball Attachment sets

Height mm	1mm	2mm	3mm	4mm	5mm
Ref.	AGM-105-1SK	AGM-105-2SK	AGM-105-3SK	AGM-105-4SK	AGM-105-5SK



All Ball Attachment Sets include:

Description	Standard plastic cap	Soft plastic cap	Hard plastic cap	Metal housing	Protective disk
Ref.	AGM-105-P	AGM-105-PS	AGM-105-PH	AGM-105-M	AGM-105-D

Alfa-Lock Attachment Ø4.5mm






Height mm	1mm	2mm	3mm	4mm	5mm
Ref.	AGM-106-1S	AGM-106-2S	AGM-106-3S	AGM-106-4S	AGM-106-5S

Additional Info: Recommended torque - 20 Ncm. - Using hex driver 1.25 mm.

Material: Titanium



All Alfa-Lock Prosthetics

Description	Standard plastic cap		Soft plastic cap	
Ref.	AGM-106-P		AGM-106-PS	
Hard plastic cap		Metal housing		Protective disk
AGM-106-PH		AGM-106-M		AGM-106-D
				

Alfa-Lock sets

Height mm	1mm	2mm	3mm	4mm	5mm
Ref.	AGM-106-1SK	AGM-106-2SK	AGM-106-3SK	AGM-106-4SK	AGM-106-5SK



All Alfa-Lock Sets include:

Description	Standard plastic cap	Soft plastic cap	Hard plastic cap	Metal housing	Protective disk
Ref.	AGM-106-P	AGM-106-PS	AGM-106-PH	AGM-106-M	AGM-106-D

Scan Post

Height mm	10mm
Material	PEEK
Ref.	SBSL



Digital Analog

Height mm	10mm
Material	Stainless Steel
Ref.	AD-SL



Engaging Ti-Base

Height mm	0.5mm
Material	Titanium
Ref.	TBSL-05



Height mm	1.5mm
Material	Titanium
Ref.	TBSL-15



Height mm	3.0mm
Material	Titanium
Ref.	TBSL-30



Non-Engaging Ti-Base

Height mm	0.5mm
Material	Titanium
Ref.	TBSL-NH



Height mm	1.5mm
Material	Titanium
Ref.	TBSL-NH-15



Height mm	3.0mm
Material	Titanium
Ref.	TBSL-NH-30



Scan Body Set

S-LINE PLATFORM 10-MM
-5PCS.



S-line SBSL-10-K

ALL SCAN BODY SETS
INCLUDE:

HEX DRIVER
1.25MM - (LONG)
AGM-400



Concave Healing Cap Ø4.5mm



Height mm	2mm	3mm	4mm
Ref.	AGM-203-2C	AGM-203-3C	AGM-203-4C

Additional Info: Recommended torque - manual only light finger tight (5-10 Ncm) using hand driver 1.25 mm.

Material: Titanium

Standard Healing Cap Ø4.2mm



Height mm	1mm	2mm	3mm	4mm	5mm	6mm	7mm
Ref.	AGM-203-1	AGM-203-2	AGM-203-3	AGM-203-4	AGM-203-5	AGM-203-6	AGM-203-7

Additional Info: Recommended torque - manual only light finger tight (5-10 Ncm) using hand driver 1.25 mm.

Material: Titanium

Wide Healing Cap Ø5.0mm


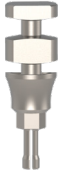





Height mm	1mm	2mm	3mm	4mm	5mm	6mm	7mm
Ref.	AGM-203-1W	AGM-203-2W	AGM-203-3W	AGM-203-4W	AGM-203-5W	AGM-203-6W	AGM-203-7W

Additional Info: Recommended torque - manual only light finger tight (5-10 Ncm) using hand driver 1.25 mm.

Material: Titanium



Closed Tray Impression Transfers

Description	with click connection		Concave with click connection		with screw connection	
Height mm	11mm		11mm		8mm	
Ref.	AGM-302		AGM-302-C		AGM-305	
Description	with plastic sleeve		Plastic sleeve - 4pcs			
Height mm	8.5mm		11mm			
Ref.	AGM-304		AGM-304-P			

Additional Info: Recommended torque - manual only light finger tight (5-10 Ncm) using hand driver 1.25 mm.

Material: Stainless Steel


Open Tray Impression Transfers

Description	Open tray transfer		Concave open tray transfer	
Height mm	14mm		14mm	
Ref.	AGM-301		AGM-301-C	

Additional Info: Recommended torque - manual only light finger tight (5-10 Ncm) using hand driver 1.25 mm.

Material: Stainless Steel

Standard Platform Implant Analog

Description	Implant analog	
Height mm	12mm	
Ref.	AGM-214	

Straight Abutments

Description	Short thin	Long thin	Short standard	Standard
Height mm	7mm	10mm	7mm	7mm
Ref.	AGM-104S 	AGM-104 	AGM-101S 	AGM-101 

Additional Info: Recommended torque - 25 Ncm.


Material: Titanium

Description	Short wide	Wide	Long base	Long neck
Height mm	7mm	10mm	13mm	15mm
Ref.	AGM-110S 	AGM-110 	AGM-108 	AGM-109 

Additional Info: Recommended torque - 25 Ncm.

Material: Titanium


Shoulder Abutments

Description	Shoulder -1mm	Shoulder -2mm	Shoulder 3mm	Shoulder 4mm	
Height mm	10mm	11mm	12mm	13mm	
Ref.	AGM-602-1	AGM-602-2	AGM-602-3	AGM-602-4	

Additional Info: Recommended torque - 25 Ncm.

Material: Titanium


Concave Shoulder Abutments

Description	Shoulder -1mm	Shoulder -2mm	Shoulder -3mm	Shoulder -4mm	
Height mm	10mm	11mm	12mm	13mm	
Ref.	AGM-101-1C	AGM-101-2C	AGM-101-3C	AGM-101-4C	

Additional Info: Recommended torque - 25 Ncm.

Material: Titanium




Esthetic Abutments

Description	Esthetic - 1mm	Esthetic - 2mm	Esthetic - 3mm	
Height mm	10mm	11mm	12mm	
Ref.	AGM-802-1	AGM-802-2	AGM-802-3	

Additional Info: Recommended torque - 25 Ncm.

Material: Titanium

15° Angulated Abutments

Description	15° Thin	15° Short	15° Standard	15° Long
Height mm	9.5mm	7mm	9.5mm	12mm
Ref.	AGM-102T 	AGM-102S 	AGM-102 	AGM-107 

Additional Info: Recommended torque - 25 Ncm.

Material: Titanium

15° Angulated Esthetic Abutments

Description	15° Esthetic - 1mm	15° Esthetic - 2mm	15° Esthetic - 3mm
Height mm	10mm	11mm	12mm
Ref.	AGM-102-E1	AGM-102-E2	AGM-102-E2



Additional Info: Recommended torque - 25 Ncm.

Material: Titanium

15° Concave Angulated Esthetic Abutments

Description	15° Concave - 1mm	15° Concave - 2mm	15° Concave - 3mm
Height mm	10mm	11mm	12mm
Ref.	AGM-102-1C	AGM-102-2C	AGM-102-3C



Additional Info: Recommended torque - 25 Ncm.

Material: Titanium

25° Angulated Abutments

Description	25° Short	25° Standard	25° Long
Height mm	7mm	9.5mm	12mm
Ref.	AGM-103S	AGM-103	AGM-111



Additional Info: Recommended torque - 25 Ncm.

Material: Titanium

25° Angulated Esthetic Abutments

Description	25° Esthetic - 1mm	25° Esthetic - 2mm	25° Esthetic - 3mm
Height mm	10mm	11mm	12mm
Ref.	AGM-103-E1	AGM-103-E2	AGM-103-E3



Additional Info: Recommended torque - 25 Ncm.

Material: Titanium

25° Concave Angulated Esthetic Abutments

Description	25° Concave - 1mm	25° Concave - 2mm	25° Concave - 3mm
Height mm	10mm	11mm	12mm
Ref.	AGM-103-1C	AGM-103-2C	AGM-103-3C



Additional Info: Recommended torque - 25 Ncm.

Material: Titanium

35° - 45° Angulated Abutments

Description	35°	45°
Height mm	11mm	11mm
Ref.	AGM-106	AGM-145



Additional Info: Recommended torque - 25 Ncm.

Material: Titanium

UCLA Abutment for Casting

Description	Castable hexed abutment CoCr base
Height mm	16mm
Ref.	UCLA



Additional Info: Recommended torque - 25 Ncm.

Material: CoCr / Plastic

Direct Prosthetic Screw

Description	Standard platform screw
Height mm	7.7mm
Ref.	AGM-202



Plastic Abutments for Casting Height 11mm

Description	Hex wide profile	Hex sleeve	Non-Hex sleeve
Ref.	AGM-P1	AGM-P3	AGM-P4

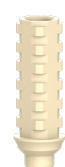


Additional Info: Recommended torque - 25 Ncm. - Supplied with prosthetic screw AGM-202

Material: Plastic

Temporary Abutments

Description	Long screw -2pcs	Hex	Non-Hex	Hex	Non-Hex
Height mm	15mm	10mm	10mm	10mm	10mm
Ref.	AGM-900	AGM-901	AGM-902	AGM-903	AGM-904



Additional Info: Recommended torque - 20 Ncm. - Supplied with prosthetic screw AGM-202

Material: Titanium / Peek

Single Unit Ø4.6mm

Height mm	1mm	2mm	3mm
Ref.	AGM-207-1H	AGM-207-2H	AGM-207-3H



Additional Info: Recommended torque - 25 Ncm. Anti rotation anatomic connector used for single unit screw retained restorations.

Material: Titanium

Single Unit Abutments

Description	Transfer open tray	Analog	Healing Cap
Height mm	22mm	9.5mm	3mm
Ref.	AGM-301-H	AGM-214-H	AGM-509-H



Additional Info: Recommended torque - manual only light finger tight (5-10 Ncm) using hand driver 1.25 mm.

Material: Stainless Steel / Titanium

Single Unit Abutments

Description	Screw - 2pcs	Plastic	Temporary
Height mm	4mm	12mm	12mm
Ref.	AGM-207-SCH	AGM-207-PH	AGM-207-PK



Additional Info: Recommended torque - 20 Ncm. - Using hex driver 1.25 mm.

Material: Titanium / Plastic / Peek

Scan Post

Height mm	7mm
Material	PEEK
Ref.	SBH-07



10mm
PEEK
SBH-10



Digital Analog

9mm
Stainless Steel
AD-SP



Engaging Ti-Base

Height mm	0.5mm
Material	Titanium
Ref.	TBH-05



1.5mm
Titanium
TBH-15



3.0mm
Titanium
TBH-30



Non-Engaging Ti-Base

Height mm	0.5mm
Material	Titanium
Ref.	TBNH-05



1.5mm
Titanium
TBNH-15



3.0mm
Titanium
TBNH-30



Engaging Ti-Base Compatible Sirona

Height mm	1.0mm
Material	Titanium
Ref.	TBS



Suggested Workflow:

Scanning:

Scan intraorally or on your model with an Alfa Gate scan post.

Designing:

In the Alfa Gate implant library, select the implant scan post and Ti-Base height. Design the implant's restoration.

Milling:

Send the design file to mill your restoration.

Cementation:

Cement the milled restoration on Ti-Base.

Scan Body Set

INTERNAL HEX PLATFORM10-MM
-5PCS.



SBH-10-K

ALL SCAN BODY SETS
INCLUDE:

HEX DRIVER
1.25MM - (LONG)
AGM-400



Straight Multi-Unit Ø5.0mm

Height mm	1mm	2mm	3mm	4mm	5mm
Ref.	AGM-700-1	AGM-700-2	AGM-700-3	AGM-700-4	AGM-700-5

Additional Info: Recommended torque - 25 Ncm. - Using hex driver 1.25 mm.

Material: Titanium



17° Angulated Multi-Unit Ø5.0mm

Height mm	1mm	2mm	3mm
Ref.	AGM-717-1	AGM-717-2	AGM-717-3

Additional Info: Recommended torque - 25 Ncm. - Using hex driver 1.25 mm.

Material: Titanium



30° Angulated Multi-Unit Ø5.0mm

Height mm	1mm	2mm	3mm
Ref.	AGM-730-1	AGM-730-2	AGM-730-3

Additional Info: Recommended torque - 25 Ncm. - Using hex driver 1.25 mm.

Material: Titanium



45° Angulated Multi-Unit Ø5.0mm

Height mm	1mm
Ref.	AGM-745-1

Additional Info: Recommended torque - 25 Ncm. - Using hex driver 1.25 mm.

Material: Titanium



Multi-Unit Prosthetics

Description	Transfer open tray	Analog	Healing Cap
Height mm	22mm	12mm	5mm
Ref.	AGM-508	AGM-507	AGM-509

Additional Info: Recommended torque - 5 Ncm. - Using hex driver 1.25 mm.

Material: Stainless Steel / Titanium



Multi-Unit Prosthetics

Description	Prosthetic screw - 2pcs	Temporary cylinder	Plastic cylinder	Temporary PEEK cylinder
Height mm	4.5mm	12mm	12mm	12mm
Ref.	AGM-506-SC	AGM-505	AGM-506	AGM-512

Additional Info: Recommended torque - manual only light finger tight (5-10 Ncm) using hand driver 1.25 mm.

Material: Titanium / Plastic / Peek



Multi-Unit CAD/CAM

Scan Post

Height mm	7mm
Material	PEEK
Ref.	SBMU



Digital Analog

Height mm	9mm
Material	Stainless Steel
Ref.	AD-MU



Non-Engaging Ti-Base

Height mm	0.3mm
Material	Titanium
Ref.	TBMU



SP Straight Multi-Unit

Height mm	1mm	2mm	3mm	4mm	5mm
Ref.	AGM-700-1-K	AGM-700-2-K	AGM-700-3-K	AGM-700-4-K	AGM-700-5-K

SP 17° Angulated Multi-Unit

Height mm	1mm	2mm	3mm
Ref.	AGM-717-1-K	AGM-717-2-K	AGM-717-3-K

SP 30° Angulated Multi-Unit

Height mm	1mm	2mm	3mm
Ref.	AGM-730-1-K	AGM-730-2-K	AGM-730-3-K

SP 45° Angulated Multi-Unit

Height mm	1mm
Ref.	AGM-745-1-K



All Multi-Unit Sets include:

Description	Transfer	Analog	Healing Cap
Ref.	AGM-508	AGM-507	AGM-509

Description	Screw - 2pcs	Temporary cylinder	Plastic cylinder
Ref.	AGM-506-SC	AGM-505	AGM-506

MU Multi-Unit Scan body sets

MULTI-UNIT PLATFORM-
10MM -5PCS.

ALL SCAN BODY SETS
INCLUDE:



SBMU-K

HEX DRIVER
1.25MM - (LONG)
AGM-400



Standard Ball Attachment Ø4.2mm

Height mm	0.5mm	1mm	2mm	3mm	4mm	5mm	6mm	7mm
Ref.	AGM-105-0.5	AGM-105-1	AGM-105-2	AGM-105-3	AGM-105-4	AGM-105-5	AGM-105-6	AGM-105-7



Additional Info: Recommended torque - 25 Ncm. - Using hex driver 1.25 mm.

Material: Titanium

Concave Ball Attachment Ø4.2mm

Height mm	1mm	2mm	3mm	4mm
Ref.	AGM-105-1C	AGM-105-2C	AGM-105-3C	AGM-105-4C



Additional Info: Recommended torque - 25 Ncm. - Using hex driver 1.25 mm.

Material: Titanium

Angulated Multi Base Height 1.5mm

Description	Multi base 17°	Multi base 30°
Ref.	AGM-501	AGM-502



Additional Info: Recommended torque - 25 Ncm. - Using hex driver 1.25 mm.

Material: Titanium

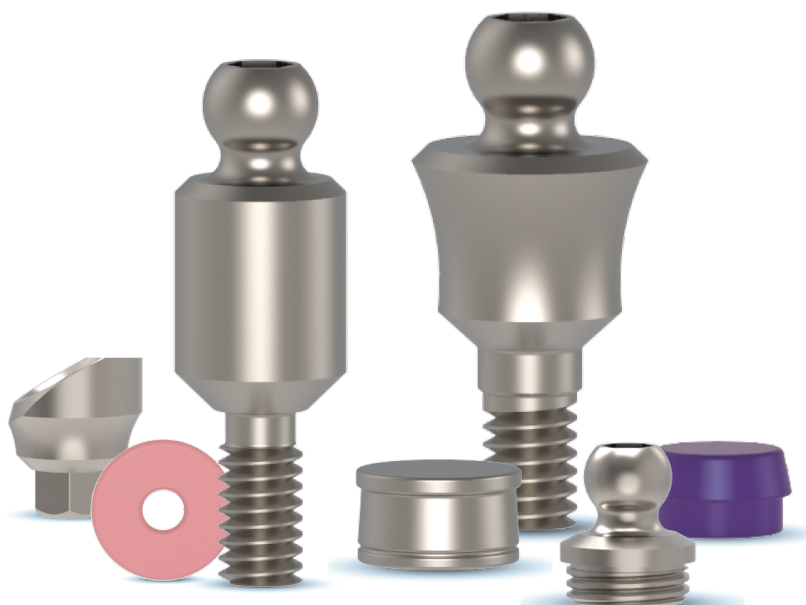
Ball Attachment for Multi Base

Height mm	1mm	2mm	3mm
Ref.	AGM-504-1	AGM-504-2	AGM-504-3



Additional Info: Recommended torque - 25 Ncm. - Using hex driver 1.25 mm.

Material: Titanium



Height mm	1mm	2mm	3mm	4mm	5mm	6mm	7mm
Ref.	AGM-105-1K	AGM-105-2K	AGM-105-3K	AGM-105-4K	AGM-105-5K	AGM-105-6K	AGM-105-7K

All Ball Attachment Sets include:

Description	Standard plastic cap	Soft plastic cap
Ref.	AGM-105-P 	AGM-105-PS 
Hard plastic cap	Metal housing	Protective disk
AGM-105-PH 	AGM-105-M 	AGM-105-D 



Ball Attachment Replacement Set

Ref. AGM-105-1T

All Ball Attachment Sets include:

Description	Standard plastic cap	Soft plastic cap
Ref.	AGM-105-P 	AGM-105-PS 
Hard plastic cap	Metal housing	Protective disk
AGM-105-PH 	AGM-105-M 	AGM-105-D 



Alfa-Lock Attachment Ø4.5mm

Height mm	1mm	2mm	3mm	4mm	5mm
Ref.	AGM-106-1	AGM-106-2	AGM-106-3	AGM-106-4	AGM-106-5

Additional Info: Recommended torque - 25 Ncm. - Using hex driver 1.25 mm.

Material: Titanium



Plastic Cap for Alfa-Lock

Description	Standard	Soft	Hard
Ref.	AGM-106-P	AGM-106-PS	AGM-106-PH



Additional Info: Used for all types of Alfa-Lock

Material: Plastic

Metal Housing and Protective Disk

Description	Metal housing	Protective disk
Height mm	2.8mm	0.5mm
Ref.	AGM-106-M	AGM-106-D



Additional Info: Used for all types of Alfa Lock

Material: Stainless Steel / Plastic

Angulated Multi Base Height 1.5mm

Description	Multi base 17°	Multi base 30°
Ref.	AGM-501	AGM-502



Additional Info: Recommended torque - 25 Ncm. - Using hex driver 1.25 mm.

Material: Titanium

Alfa-Lock for Multi Base Ø4.5mm

Height mm	1mm	2mm	3mm
Ref.	AGM-510-1	AGM-510-2	AGM-510-3



Additional Info: Recommended torque - 25 Ncm. - Using hex driver 1.25 mm.

Material: Titanium

Alfa-Lock Sets

Height mm	1mm	2mm	3mm	4mm	5mm
Ref.	AGM-106-1K	AGM-106-2K	AGM-106-3K	AGM-106-4K	AGM-106-5K

All Alfa-Lock Sets include:

Description	Standard plastic cap	Soft plastic cap
Ref.	AGM-106-P 	AGM-106-PS 
Hard plastic cap	Metal housing	Protective disk
AGM-106-PH 	AGM-106-M 	AGM-106-D 



Alfa-Lock Replacement Set

Ref. AGM-106-1T

All Alfa-Lock Sets include:

Description	Standard plastic cap	Soft plastic cap
Ref.	AGM-106-P 	AGM-106-PS 
Hard plastic cap	Metal housing	Protective disk
AGM-106-PH 	AGM-106-M 	AGM-106-D 



Alfa-Lock Multi Tool:

Ref. IT-AL

For Insertion/ Extraction Plastic caps.



SURGICAL KITS & INSTRUMENTS

<i>Kits</i>	44-49
<i>Instruments & Tools</i>	50-52
<i>Surgical Drills</i>	53
<i>Alfa Bone</i>	54
<i>Alfa Motor</i>	55



SURGICAL KITS

Advanced Kit

The Alfa Gate Advanced Kit improves your surgical procedure with an array of instruments needed for all cases, compatible with all our implant platforms.

The kit also includes stopper sleeves that fits over the surgical drill, securely limiting its depth of penetration, thereby enhancing accuracy, safety, and consistency to ensure better implant placement.

Kit includes:



Implant site depth probe

DPT

Implant Insertion Tools:

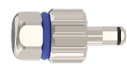


Handpiece 2.5mm (Long)

HAL

Handpiece 2.5mm (Short)

HAS



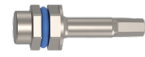
Hand/Ratchet

ITUS



2.5mm (Long)

IT2.5



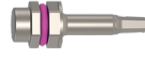
2.5mm (Short)

ITS2.5



S-line 2.0mm (Long)

IT2



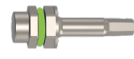
S-line 2.0mm (Short)

ITS2



RC 2.0mm (Long)

IT-RC



RC 2.0mm (Short)

ITS-RC



One-Piece (Long)

ITSL



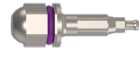
One-Piece (Short)

ITSLS



NP (Long)

IT-NP



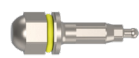
NP (Short)

ITS-NP



RP (Long)

IT-RP



RP (Short)

ITS-RP

Drill stoppers:



6mm 8mm 10mm 11.5mm 13mm



Torque wrench

TW

Tools:



Drill extender

DE



Parallel pin x4

PP

Prosthetic Drivers Hex:



Long

AGM-400



Short

AGM-400-S



Hand

AGM-400-R



Handpiece

HB

Drills:



DM



DB2.0



DB2.0-2.8



DB2.8-3.2



DB3.2-3.65



DB3.65-4.2



DB4.2-4.6



DB4.6-5.2



Advanced Kit

Ref. SKTEX

Premium Kit

Premium Surgical Kit has the most precise and unique set of tools to complete even the complex cases with ease.

The kit includes 25 built-in stopper drills that ensure a simple and accurate depth control during the drilling process.

It also includes a set of standard drills for hands-free procedures.

Kit includes:

Tools:



Parallel pin x2
PP



Ratchet wrench
RW

Prosthetic Drivers Hex 1.25mm:



Long
AGM-400



Short
AGM-400-S

Implant Insertion Tools:



2.5mm (Long)
IT2.5



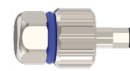
2.5mm (Short)
ITS2.5



S-line 2.0mm (Long)
IT2



S-line 2.0mm (Short)
ITS2



Hand/Ratchet
ITUS



Handpiece 2.5mm (Short)
HAS

Drills:



DM



D2.8



D3.65



D2.0



D3.2



D4.2



D4.6

Stopper Drills:



Ø2-L13mm



Ø2.8-L13mm



Ø3.2-L13mm



Ø2-L11.5mm



Ø2.8-L11.5mm



Ø3.2-L11.5mm



Ø2-L10mm



Ø2.8-L10mm



Ø3.2-L10mm



Ø2-L8mm



Ø2.8-L8mm



Ø3.2-L8mm



Ø2-L6mm



Ø2.8-L6mm



Ø3.2-L6mm



Ø3.65-L13mm



Ø4.2-L13mm



Ø3.65-L11.5mm



Ø4.2-L11.5mm



Ø3.65-L10mm



Ø4.2-L10mm



Ø3.65-L8mm



Ø4.2-L8mm



Ø3.65-L6mm



Ø4.2-L6mm



Premium Kit

Ref. SPKTM

Prime Kit

The Prime Surgical Kit is one of Alfa Gate’s most impressive and compact dental kits, designed to include everything a surgeon needs for optimal results.

Kit includes:

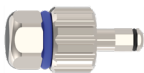


Ratchet wrench
RW

Implant Insertion Tools:



Handpiece 2.5mm (Long) *HAL*
Handpiece 2.5mm (Short) *HAS*



Hand/Ratchet
ITUS



2.5mm (Long) *IT2.5*
2.5mm (Short) *ITS2.5*



S-line 2.0mm (Long) *IT2*
S-line 2.0mm (Short) *ITS2*

Prosthetic Drivers Hex 1.25mm:



Long *AGM-400*
Short *AGM-400-S*



Hand *AGM-400-R*
Handpiece *HB*

Tools:



Drill extender *DE*
Parallel pin x4 *PP*



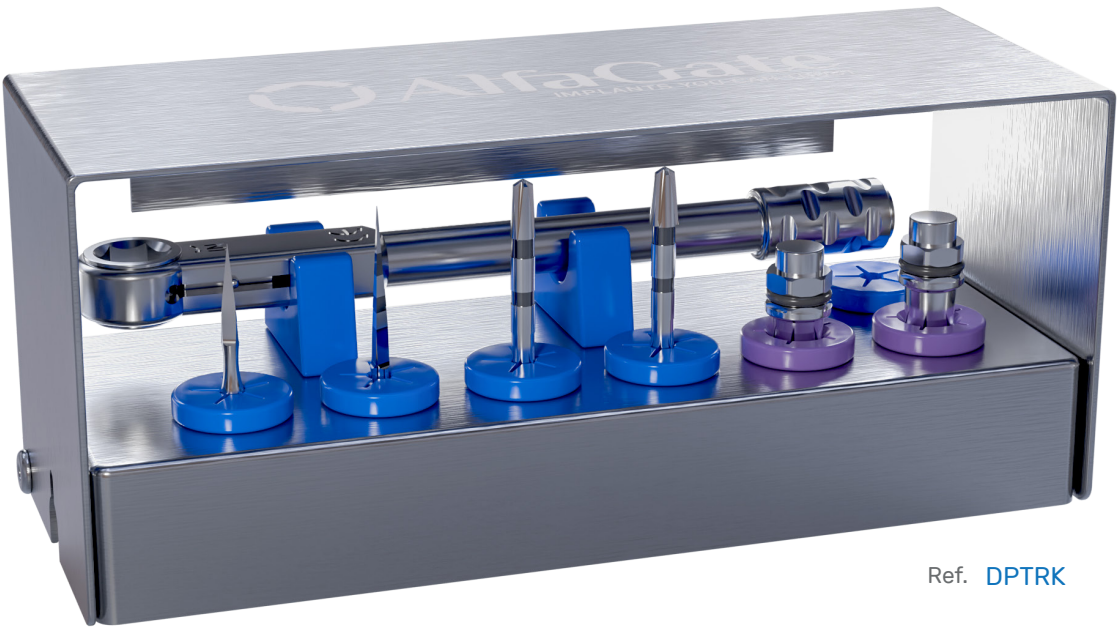
Ref. **BSKT**

Drills:



Patro Kit

The Patro Kit provides a complete and compact solution for one-piece implant procedures, including all the necessary tools for seamless implant insertion and neck bending.



Ref. **DPTRK**

Kit includes:





Ratchet wrench
RW

Drills

Description	Point Drill 1.5		Lance Drill 1.8		Cortical Drill 2.5		Cortical Drill 3.0	
Ø / Height mm	Ø 1.5 mm		Ø 1.8 mm		Ø 2.5 mm		Ø 3.0 mm	
Ref.	DM1.5		LD1.8		CD2.5		CD3.0	

One-Piece Implant Insertion Tools


Description	Long		Short	
mm	2.1 mm		2.1 mm	
Ref.	ITSL		ITSLS	

Additional Info: Used for insertion of One-Piece implant (Patro)

Material: Stainless Steel

Surgical Instruments & Tools



Tissue Punch

Ø mm	4.0 mm		5.0 mm	
Ref.	PCH-4		PCH-5	

Additional Info: Used for gingival punch and implant uncovering

Material: Stainless Steel




Trephine Drills

Ø mm	4.0/5.0 mm		5.0/6.0 mm	
Ref.	TDR 4-5		TDR 5-6	

Additional Info: Used for bone harvesting and implant removal

Material: Stainless Steel



Marking Drill and Drill Extender

Description	Marking drill		Lance Drill		Drill extender	
Ø / Height mm	Ø 1.9 mm		Ø 1.5 mm		H :26mm	
Ref.	DM		DM 1.5		DE	

Additional Info: Extends drills by 17 mm for marking the cortical plate

Material: Stainless Steel



Standard Platform Implant Insertion Tools

Description	Long		Short	
mm	2.42 mm		2.42 mm	
Ref.	IT-2.5		ITS-2.5	

Additional Info: Used for internal hex implant insertion 2.42 mm (Bioactive, TRIO, MAX, Porous)

Material: Stainless Steel

S-line Implant Insertion Tools

Description	Long		Short	
mm	2.0 mm		2.0 mm	
Ref.	IT-2		ITS-2	

Additional Info: Used for internal hex implant insertion 2.0 mm (S-line)

Material: Stainless Steel





One-Piece Implant Insertion Tools

Description	Long		Short	
mm	2.1 mm		2.1 mm	
Ref.	ITSL		ITSLS	

Additional Info: Used for insertion of One-Piece implant (Patro)

Material: Stainless Steel



Contra Angle Drivers

Description	Handpiece 2.42mm insertion tool		Handpiece 2.0mm insertion tool		Handpiece 1.25mm insertion tool		Key adaptor for handpiece	
mm	2.42 mm		2.0 mm		1.25 mm		6.35 mm	
Ref.	HA		HC		HB		HPD	

Additional Info: Recommended insertion speed 15-25 RPM

Material: Stainless Steel

Parallel Pin and Spacer

Description	Drilling spacer		Parallel pin		Used for parallel placement of implant
mm	2.42 mm		2.0/2.8 mm		
Ref.	SPR		PP		

Additional Info: Used for precise spacing and parallel placement of implant

Material: Stainless Steel




Prosthetics Hex Drivers

Description	Long		Short	
mm	1.25 mm		1.25 mm	
Ref.	AGM-400		AGM-400S	

Additional Info: Compatible with all Alfa Gate prosthetics and screws

Material: Stainless Steel

Insertion Driver for Implant Carrier


Description	Handpiece - Long		Handpiece - Short		Hand/Ratchet	
mm	2.42 mm		2.42 mm		2.42 mm	
Ref.	HAL		HAS		ITUS-2.5	

Additional Info: Recommended insertion speed 15-25 RPM

Material: Stainless Steel

Surgical Instruments & Tools


Universal Torque Wrench 10-45 Ncm

Ø mm	6.35mm	
Ref.	TW	6.35mm



Additional Info: Allows the clinician to accurately apply the recommended preload torque for implant insertion and prosthetics
Material: Stainless Steel


Ratchet Wrench

Ø mm	6.35mm	
Ref.	RW	6.35mm



Additional Info: The ratchet wrench is used for implant placement and tightening
Material: Stainless Steel


Prosthetic Holder

Ø mm	2.42 mm	
Ref.	PH	2.42mm



Additional Info: Provides an easy way to shape and grind abutments
Material: Stainless Steel

Surgical Screw Driver

Ø mm	6.35mm	
Ref.	SDI	2.42mm



Additional Info: Manual implant driver allows tactile feel and controlled implant insertion
Material: Stainless Steel

Implant Depth Probe

Ø mm	2.0 mm	
Ref.	DPT	



Additional Info: Implant site depth probe.
Material: Stainless Steel



Surgical Drills

Dual Step Drill External Irrigation

Ø mm	2.0 mm	2.8 mm	3.2 mm	3.65 mm	4.2mm	4.6mm	5.2mm
Height mm	37.6 mm	37.6 mm	37.6 mm	37.6 mm	37.6 mm	37.6 mm	37.6 mm
Ref.	DP2	D2.8	D3.2	D3.65	D4.2	D4.6	D5.2

Material: Stainless Steel

Drill Replacement Kit

Ø mm	Marking Drill	2.0 mm	2.8 mm	3.2 mm	3.65 mm	4.2 mm
Ref.	DM	DB2	D2.8	D3.2	D3.65	D4.2

Material: Stainless Steel



Ref. **DW-K**

Dual Step Drills For Stoppers Sleeves

Ø mm	2.0 mm	2.8 mm	3.2 mm	3.65 mm	4.2 mm	4.6 mm	5.2 mm
Ref.	DB2	DB2.0-2.8	DB2.8-3.2	DB3.2-3.65	DB3.65-4.2	DB4.2-4.6	DB4.6-5.2

Material: Stainless Steel

Alfabone

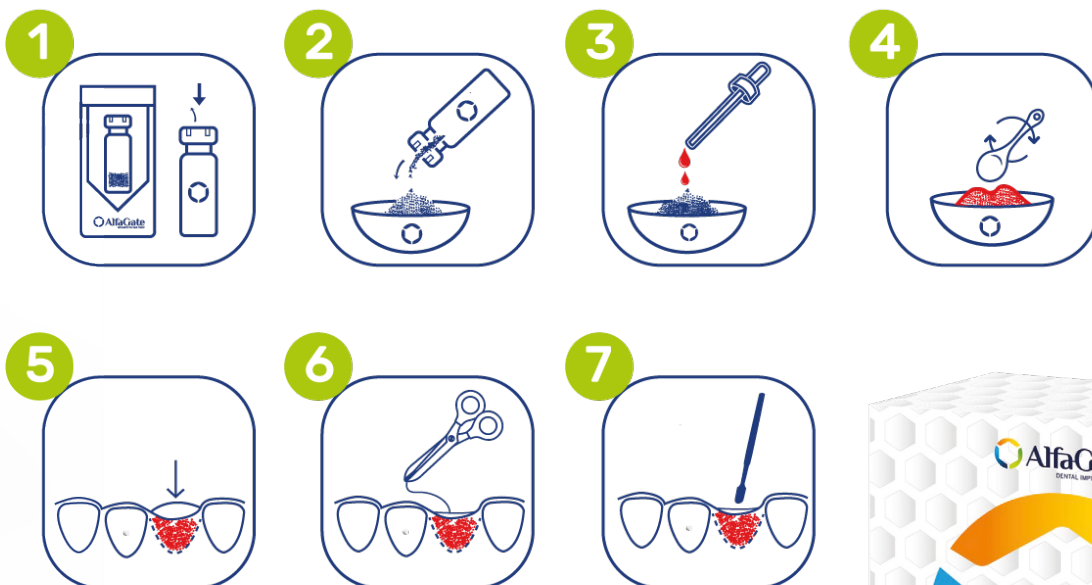
Alfa Bone is a resorbable bone graft, fully synthetic biphasic bone substitute with controlled resorption properties.

Alfa Bone is made from homogenous composition of 75% hydroxyapatite (HA) and 25% beta tri-calcium phosphate (b-TCP) which results in bi-phasic activity formation of new bone tissue, while maintaining volume and mechanical stability.

Applications:

- Periodontal defects.
- Sinus floor elevation.
- Alveolar augmentations.
- Socket preservation.

Handling



Description	0.1-0.5 mm	0.5-1.0 mm	1.0-2.0 mm
mm	1g x 5	1g x 5	1g x 5
Ref.	ALBXXS-5	ALBS-5	ALBL-5



The new Alfa Motor system was developed with the intention to provide extra smoothness into your hands. Electronic motor and sophisticated motor controls are key players in this product.

New design with smooth edges for easy cleaning. An LCD display that provides you all the information at a glance.

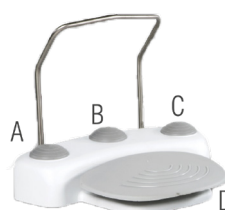
Single function haptic keys and audible feedback guarantee an accurate device setup.

Inserting and changing tube sets is carried out effortlessly by a front access push button and tube compartment.

Surgical Handpieces (20:1)



Multi-Functional Foot Control (Ki-F20)



- A-Coolant (4 steps)
- B-Program (9 programs)
- C-F/R direction
- D-Speed foot control

The tube bracket swings out and stays in plain sight while the tube set is positioned between the two notches of the bracket. A broad variety of extensions and accessories are available.

Features

- Suitable for oral and maxillofacial surgery
- Maximum 70 Ncm torque (20:1)
- Speed range and torque level



Gear Ratio	1 : 1	1 : 2	20 : 1	32 : 1
RPM	600 - 40,000	1,200 - 80,000	20 - 2,000	20 - 1,200
NCM	-	-	5 - 70	5 - 90

- 9 Memory programs - optic(on/off), speed, gear ratio, coolant, forward/reverse, torque.
- LCD display

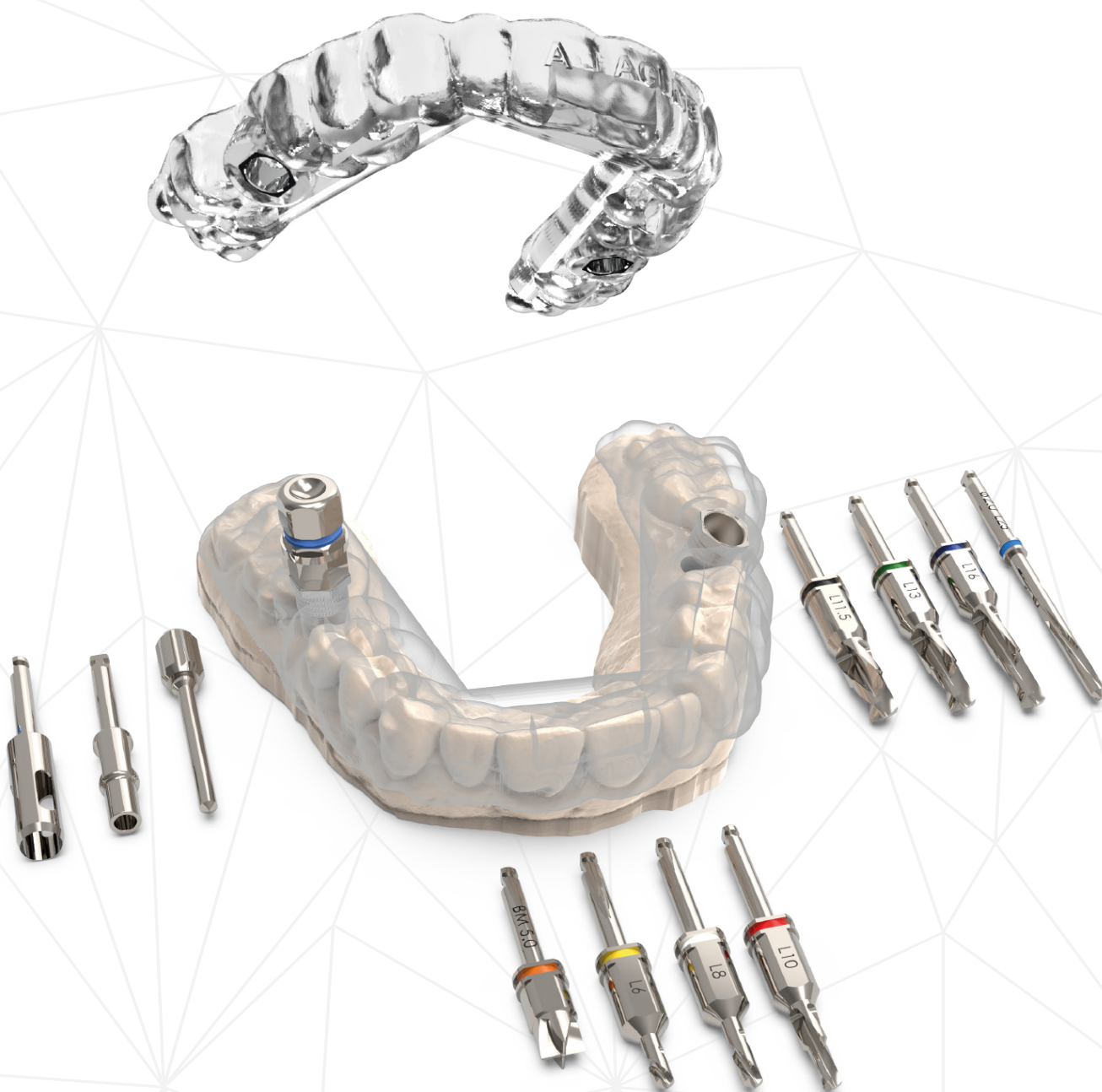
Ref.

- AGPHY** | Alfa Motor Physio dispenser
- AGHP** | Fiber optic hand piece
- AGPHT** | Irrigation tube



Digital Precision.

We guarantee a fully guided surgical procedure that assures the optimal implant for clinical execution, completing the operation using the full Alfa Guide Package.



Advantages of Alfa Guide

Digital Dentistry Done Right!

The surgical plan is done by experienced oral surgeons, Alfa Guide Team plans the virtual surgical procedure effortlessly and effectively.



Surgical Guide You Can Trust

Perfect fit for precise implant placement guaranteeing successful procedure even in the most challenging cases. Varying diameters can be inserted in the surgical Guide, from 3mm to 5mm and up to 16mm in length.

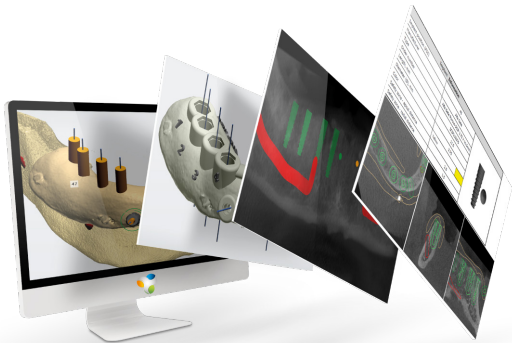


Innovative Sleeve Design

Titanium Sleeve with Hex indication for accurate final implant placement.

Alfa Guide Sleeves

Description	Full Sleeve	Narrow Sleeve	Open Sleeve	Anchor Sleeve	Pilot Drill Sleeve
mm	5mm	5mm	5mm	7mm	5mm
Ref.	SLV-F	SLV-N	SLV-O	SLV-A	SLV-P
Internal Ø	5mm	5mm	5mm	2mm	2mm



Available Advisory

Alfa Guide Team offers consultancy for every case, with special guidance to perform the most ideal surgical procedure.



Intuitive Kit Layout

The surgical kit makes the surgical procedure easier and more precise due to its straight forward and simple design; The comprehensive and single kit layout has insertion tools and drills for all implant platforms.



Alfa Guide Surgical Kit

Alfa Guide Surgical Kit is an intuitive kit that has every tool needed to complete your guided surgical procedure.

Moreover, each drill has a simple color- coding sequence, and all the necessary insertion tools are present in a single layout.

The fully guided placement of the implant can be inserted through the surgical guide using the special insertion keys that are included in the kit.

Kit Layout Categories

Site preparation

Tissue Punch Ø5mm



Bone Mill



Fixation Pin



Fixation Drill Ø2- L19mm



Pilot Drill Ø2- L25mm



Drilling

Ø2.0mm



Ø2.8mm



Ø3.2mm



Ø3.65mm



Ø4.2mm



Drills Lengths:

L: 6 / 8 / 10 / 11.5 / 13 / 16mm

Implant Insertion

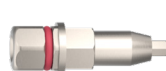
Standard Platform
ITG-2.5



Standard Platform
ITG-2.5L



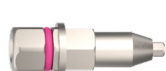
M+ Narrow Platform
ITG-NP



M+ Regular Platform
ITG-RP



S-line 3.0mm Narrow-
ITG-2



Tools and Fixation

Hand Piece Adapter
HAS



Long prosthetics Key
AGM-400



Short prosthetics Key
AGM-400-S



Drill Extender
DE



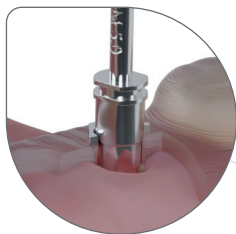
Fixation Crestal Screw



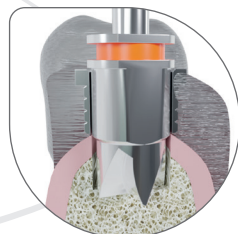
Torque Wrench
TW



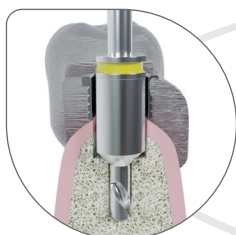
Advantages of Alfa Guide Surgical Kit



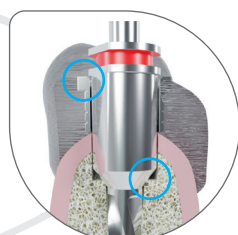
Tissue punch– for minimally invasive procedures for flapless surgery.



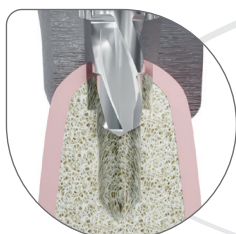
Bone mill– designed for flattening crestal bone and knife edges or narrow alveolar ridges. Moreover, it can be used to remove the soft tissue after the use of tissue punch.



Start drill creates the initial osteotomy for the implant to make the drilling sequence more efficient.



Double stopper mechanism as Guided drills are designed with this mechanism, the drill stops at the sleeve level and at the bone level which makes the drilling **safer**.

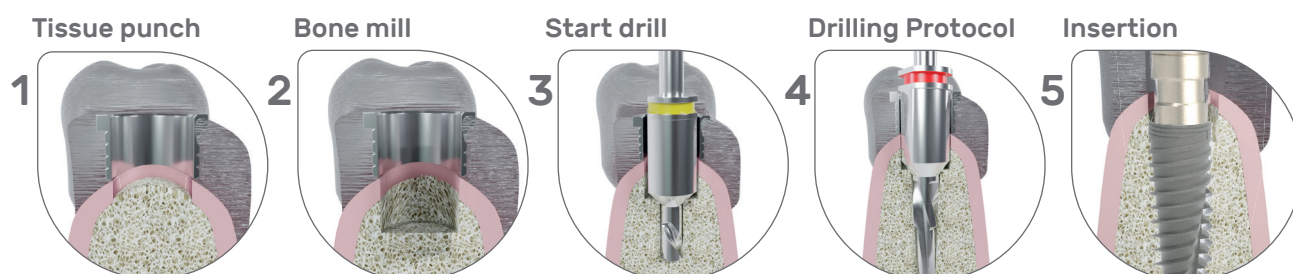


Dual-step drill and its unique protocol maintain a previous diameter at the tip of its drill, ensuring that they not only stabilize at the guide level but also at the drill tip, thus **avoiding potential operator errors**.



The two flat sides of the drill allow for **maximal cooling** during osteotomy which allows for maintaining irrigation thus **avoiding bone heating**.

Surgical Kit Workflow:

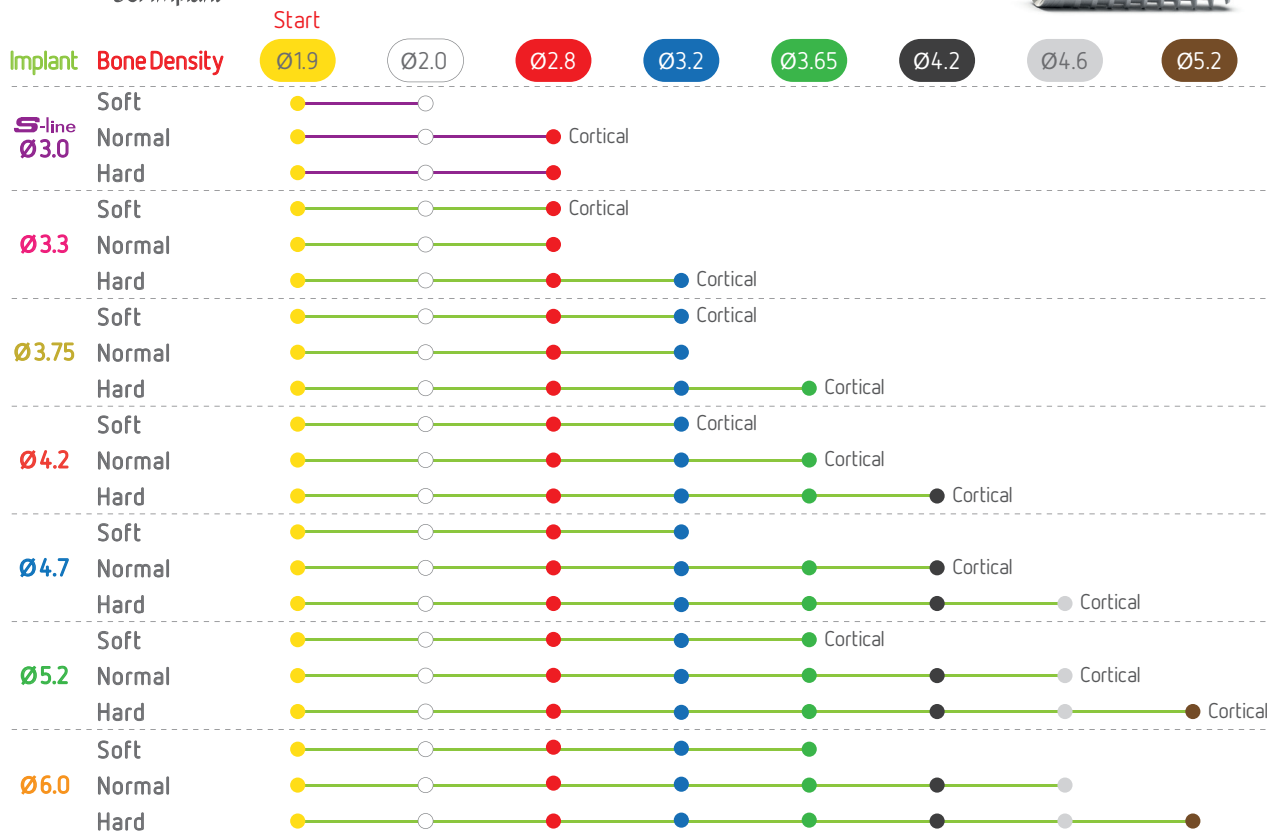


DRILLING PROTOCOL

<i>Bioactive/S-line</i>	61
<i>Trio/Max</i>	62
<i>Porous/Patro</i>	63
<i>Drilling chart reference</i>	64

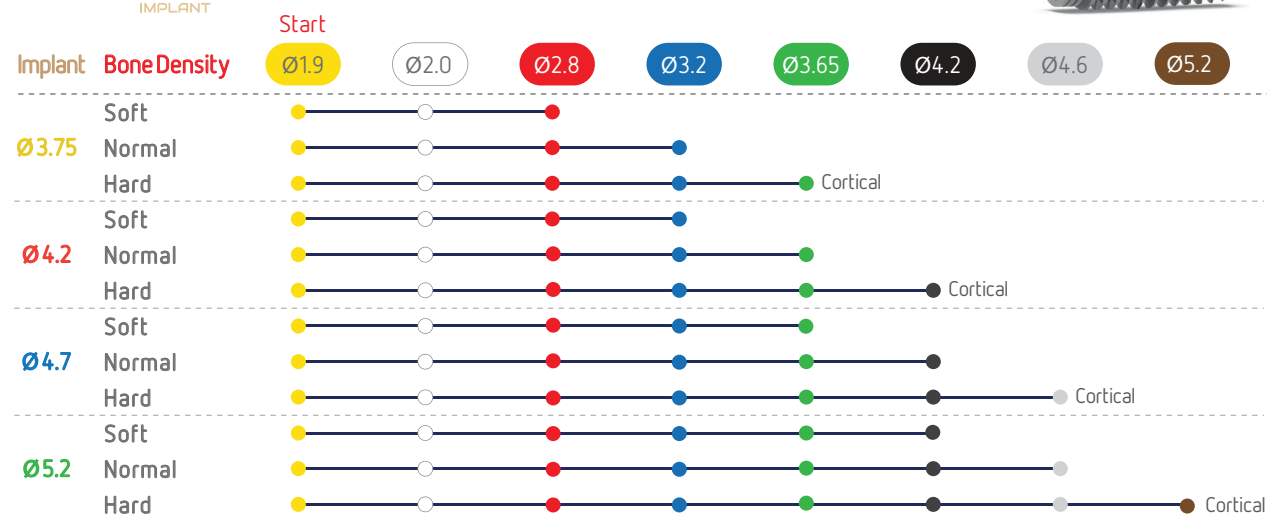


Drilling Protocols

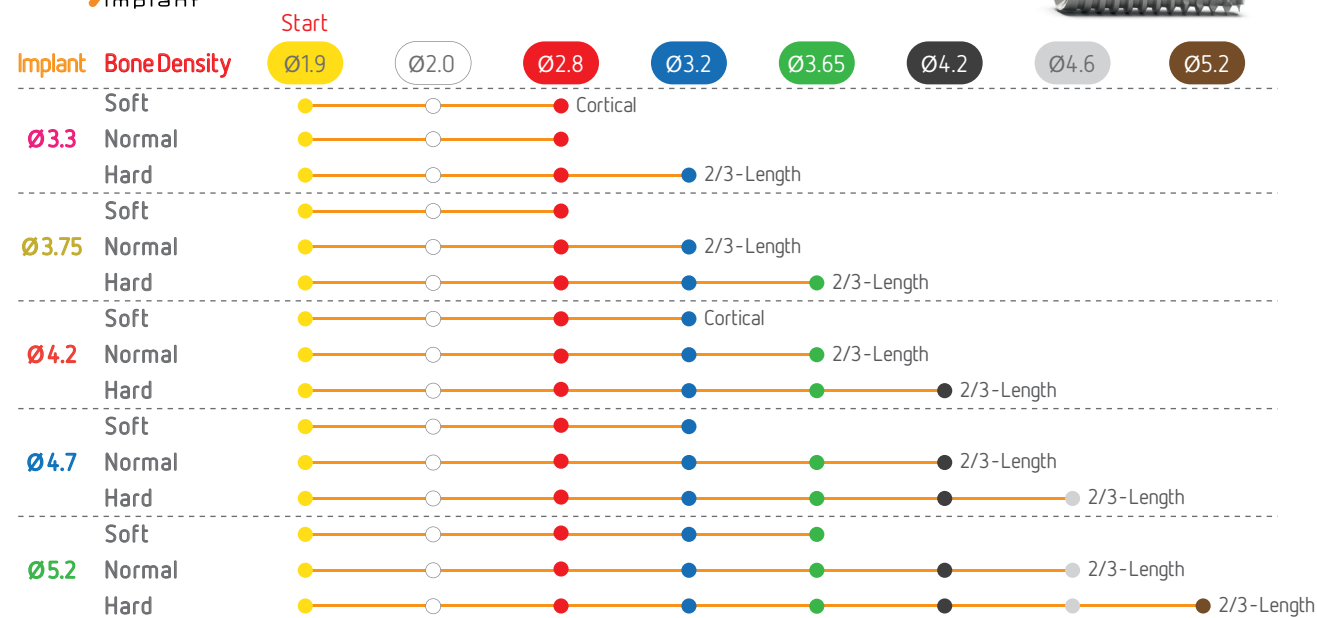


Drilling Protocols

TRIO
IMPLANT

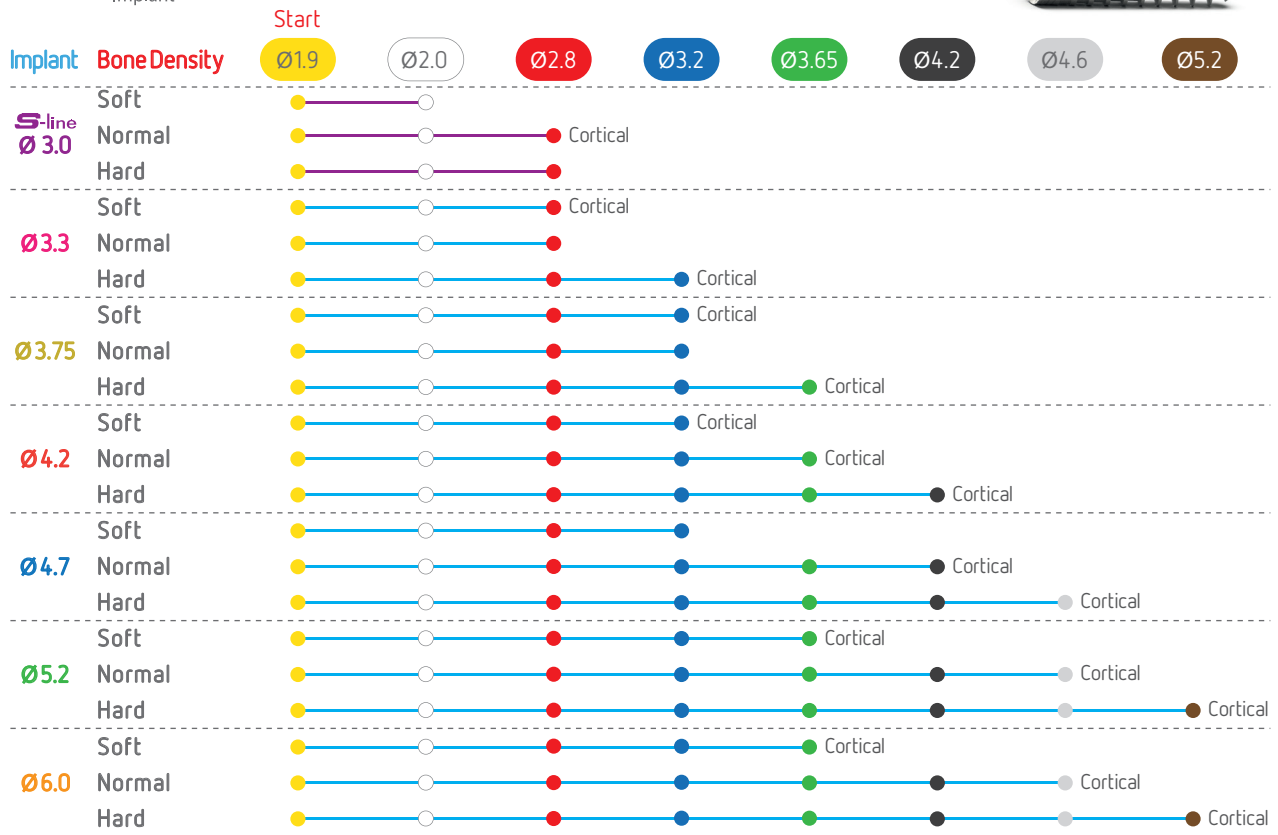


MAX
implant



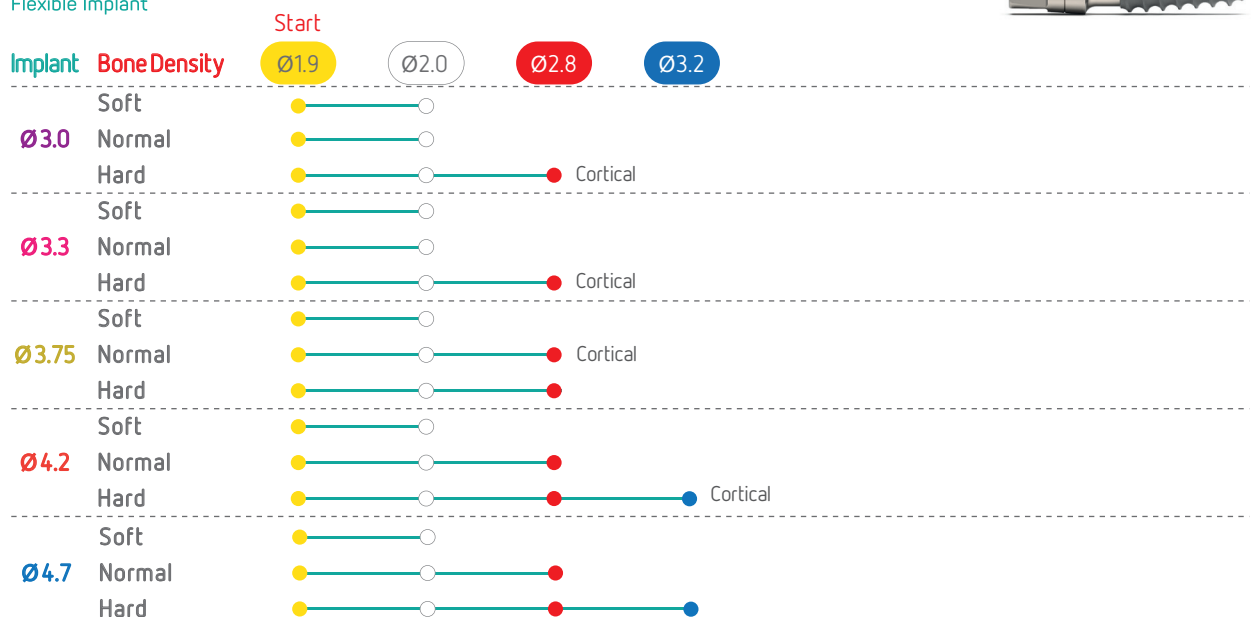
Porous

Implant

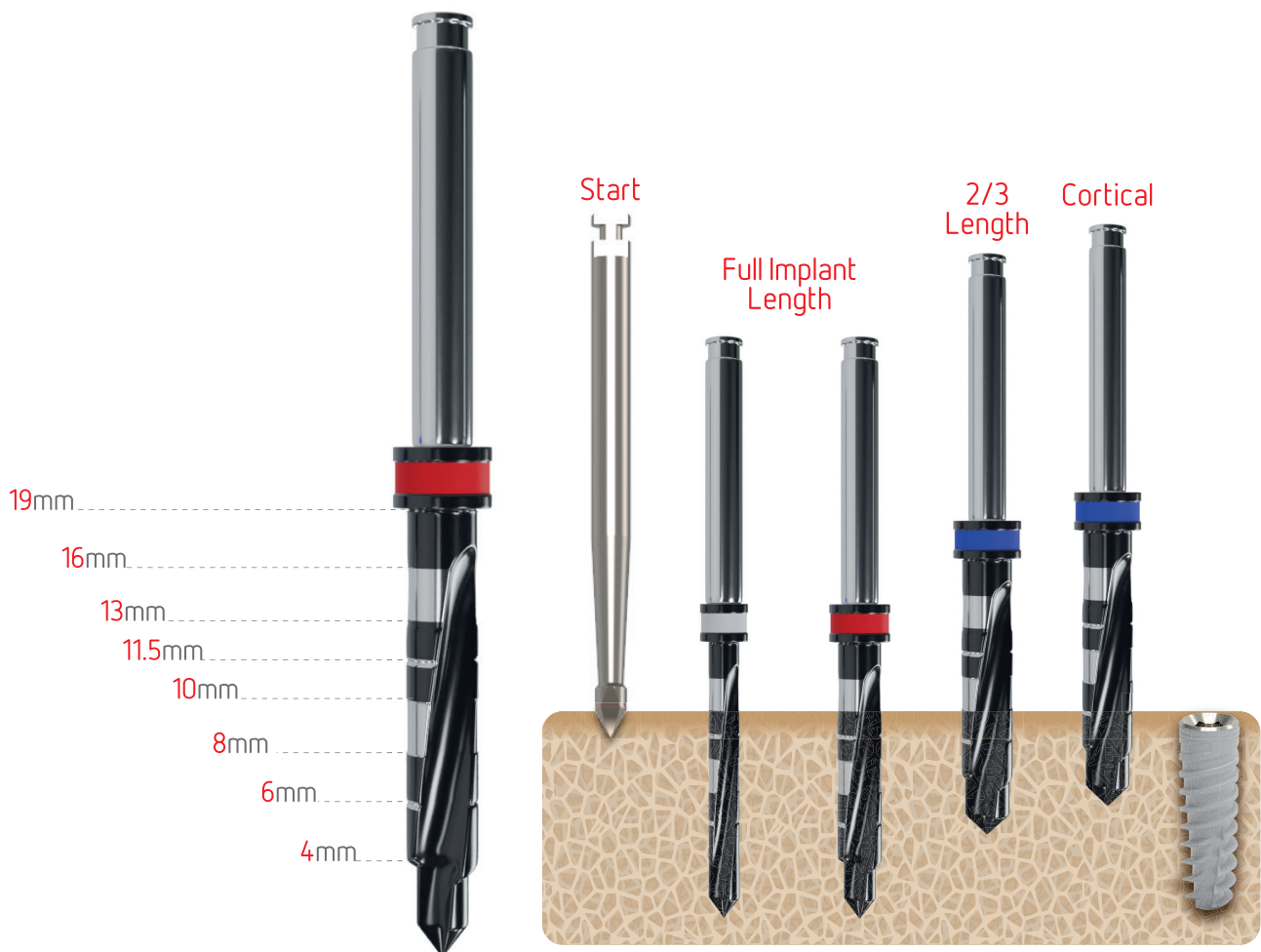


Patro

Flexible Implant



Drilling chart reference



- Drilling speed (RPM): 800-1200
- The drilling sequence is demonstrated with a 13mm implant.
- Alfa Gate drilling protocol is recommended for most clinical cases however, it cannot replace the surgeon's judgment and professional experience.

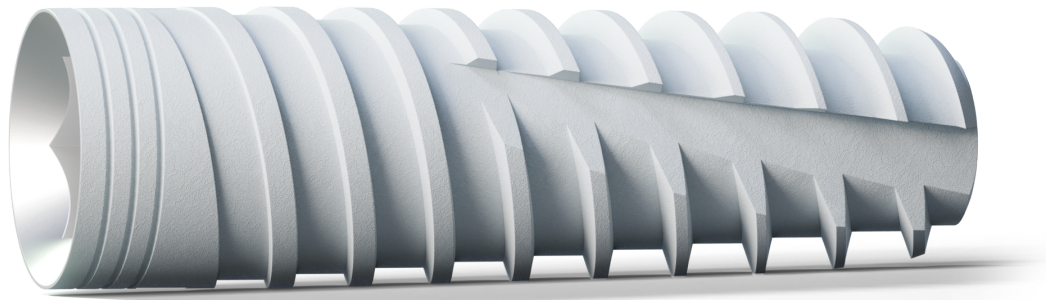
* Suggested Workflow for Ti-base compatible Sirona:

1. Scan intra orally or on your model.
2. For scanning, use Alfa Gate's sirona compatible Ti-Base, use sirona's scan body size L, (sirona's Ref. 6431329 for omnicam or 6431303 for bluecam).
3. On your CAD software library choose: internal hex platform, choose: Zimmer Tapered Screw Vent 3.5mm platform.
4. Follow sirona's standard instructions for CAD design of your restoration.
5. Use standard L blocks or equivalent for milling your abutment.
6. Cement Ti-Base to the milled and sintered block using the manufacturer's cementation instructions.

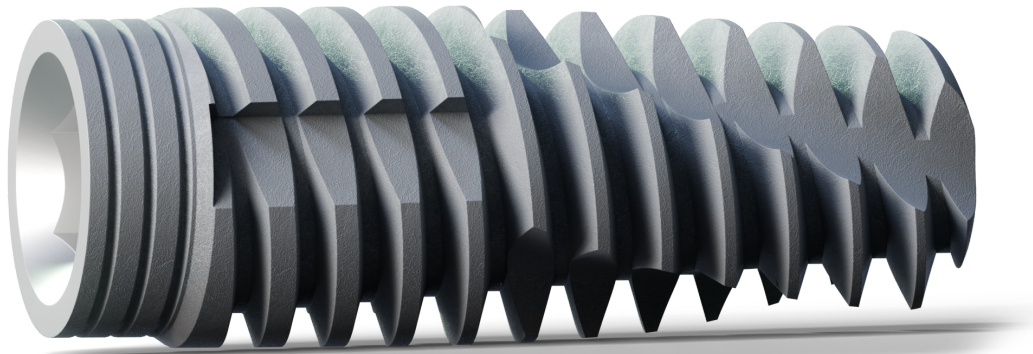


SCAN

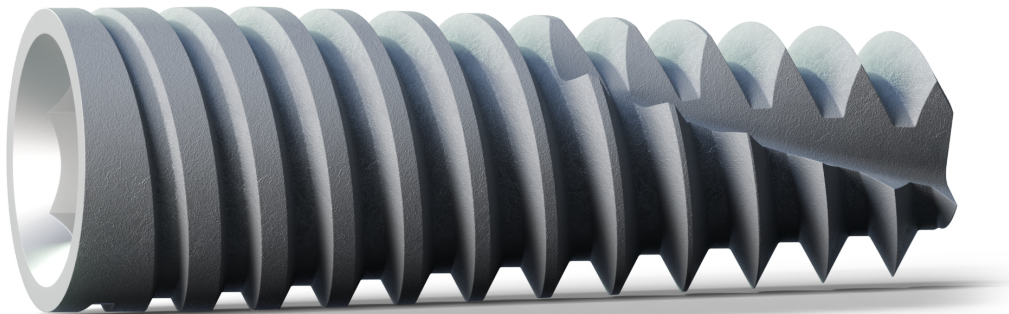
for more instructional
video's.



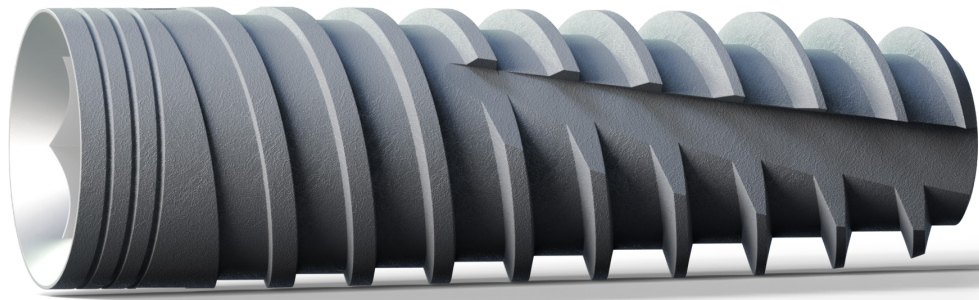
Bioactive
SCI Implant



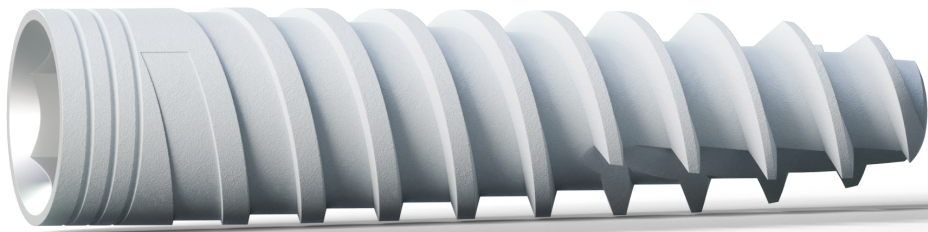
TRIO
IMPLANT



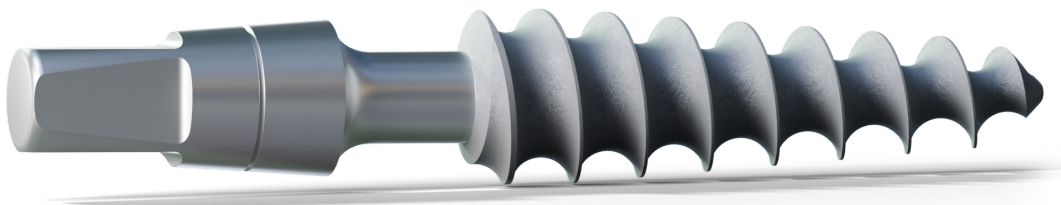
MAX
Implant



Porous
Implant



 **S-line**



 **atro**
Bendable Neck