

PRODUCT CATALOG

INDEX

| | |
|---------------------------------|-------|
| Company Profile | 4 |
| Our Advantages | 5 |
| Implants | 6-33 |
| Internal Hex | 6-25 |
| Bioactive | 8 |
| Trio | 12 |
| Max | 14 |
| Porous | 16 |
| S-line | 18 |
| Zygomatic | 20 |
| Pterygoid | 22 |
| Patro | 24 |
| Conical Connection | 26-33 |
| M+ RP | 28 |
| M+ NP | 30 |
| Trio RC | 32 |
| Packaging & Handling | 34-35 |
| Prosthetics Options | 36-73 |
| Internal Hex | 36-52 |
| S-line Prosthetic | 38 |
| S-line Multi-Unit | 39 |
| S-line Ball attachment | 40 |
| S-line Alfa-Lock | 41 |
| S-line CAD/CAM | 42 |
| SP Prosthetic | 43 |
| SP CAD/CAM | 48 |
| SP Multi-Unit | 50 |
| SP Ball attachment | 52 |
| SP Alfa-Lock | 53 |
| Conical Connection | 54-61 |
| RP Prosthetic | 56 |
| RP Multi-Unit | 58 |
| RP CAD/CAM | 59 |
| RP Ball attachment | 60 |
| RP Alfa-Lock | 61 |
| NP Prosthetic | 62 |
| NP CAD/CAM | 64 |
| NP Ball attachment | 65 |
| NP Alfa-Lock | 66 |
| RC Prosthetic | 68 |
| RC Multi-Unit | 70 |
| RC CAD/CAM | 72 |
| RC Alfa-Lock | 73 |

| | |
|--|-------|
| Surgical Kits & Instruments | 74-87 |
| Advanced Kit | 76 |
| Premium Kit | 78 |
| Prime Kit | 80 |
| Zygomatic kit / Patro Kit | 81 |
| Conical Connection | 82 |
| Surgical Instruments & Tools | 84 |
| Surgical Drills | 87 |
| Alfa Bone | 88 |
| Alfa Motor | 89 |
| Alfa Guide | 90-93 |
| Drilling Protocols | 94-98 |
| Bioactive | 95 |
| Trio / Max | 96 |
| Porous / Patro | 97 |
| M+ / Trio | 98 |
| Drilling Chart Reference | 99 |



**DETERMINED
TO LEAD**

www.alfa-gate.com

COMPANY PROFILE

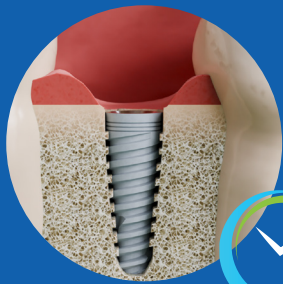
With over 30 years of global excellence, Alfa Gate is a premier manufacturer of high-performance dental implants and prosthetic solutions. Engineered with German precision and technological innovation, our expansive portfolio of over 800 products is meticulously engineered to merge technological innovation with clinical precision, empowering dental professionals to achieve superior patient outcomes.

From advanced CAD/CAM workflows and the Alfa Guide Surgical System to a comprehensive range of prosthetic variations, we provide the versatile tools necessary for every clinical scenario.

Beyond our manufacturing scale, we foster professional growth through the International Alfa Gate Academy, offering tailored education and expert consultancy. Today, Alfa Gate's commitment to R&D and manufacturing excellence serves clinicians in over 60 countries across the Americas, Europe, the Middle East, and Asia.



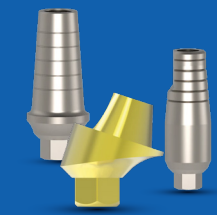
OUR ADVANTAGES



Bioactive implant has a unique CaP surface technology that has revolutionized the dental world by reducing **healing time** to 6- 10 weeks.



Our Team consists of **experienced dentists** developing products catered to dentists' best interests.



Wide variety of prosthetic options to complete every restorative procedure.



A single key for our **entire range** of prosthetic parts.



Numerous scientific studies including clinical trials conducted in established European universities **authenticate** our claims.



Alfa Gate Surgical Kits offer the **exact tools needed** for every case in a convenient and accurate layout.

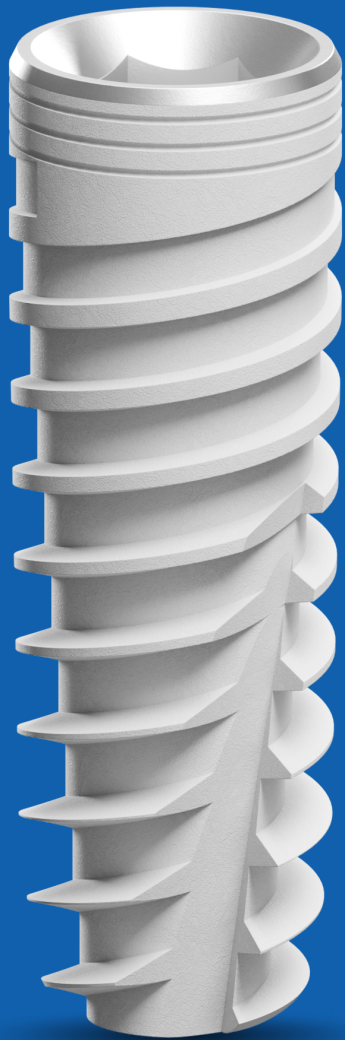
IMPLANTS

INTERNAL HEX



| | |
|-----------|-------|
| Bioactive | 8-11 |
| Trio | 12-13 |
| Max | 14-15 |
| Porous | 16-17 |
| S-line | 18-19 |
| Zygomatic | 20-21 |
| Pterygoid | 22-23 |

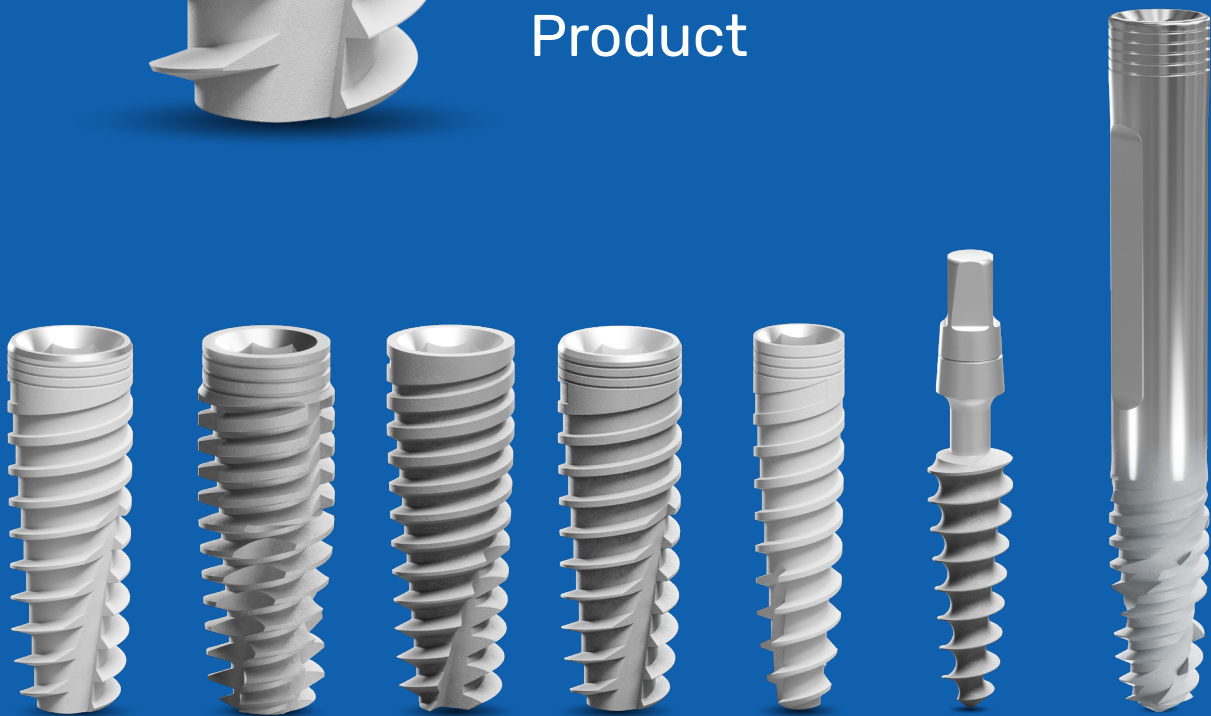
| | |
|-------------------|-------|
| One-Piece implant | |
| Patro | 24-25 |



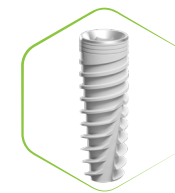
+30
Years Of Experience

+60
Countries

+800
Product



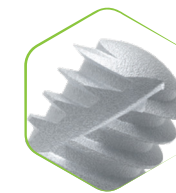
The **Bioactive implant** is redefining implantology through its advanced hydrophilic surface technology, engineered for high predictability and exceptional clinical success rates. Specifically optimized for compromised clinical scenarios, the Bioactive surface promotes accelerated osseointegration, significantly shortening recovery periods even in the most challenging physiological environments.



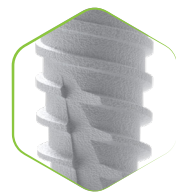
Conical Body



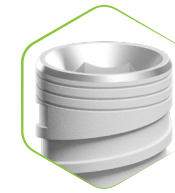
Single SP Platform



Domed Apex



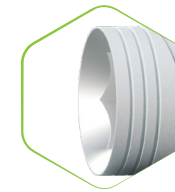
Variable Thread Design



Micro-rings



Switching platform



Internal Hex Connection with Conical Sealing Design



Bioactive has a completely resorbable **calcium-phosphate surface**.



The implant's **hydrophilic** surface attracts the stem cells.



The osteoinductive characteristics of the surface results in successful osseointegration and improved implant anchoring.



Bioactive's outstanding characteristics accelerate healing time up to **6-10 weeks** instead of 3-6 months post-operation.



The **hydrophilic CaP surface** is fully resorbable, ensuring optimal outcomes



Vertical Osteoconductive Characteristics of Titanium Implants with Calcium-Phosphate-Coated Surfaces – A Pilot Study in Rabbits

Elis Schmalz, MD¹, Venera Pridmore, PhD², Venera Pridmore, PhD², BBA 40, Naves, MD, DMS, PhD³
from Weillington Campus, NZ (1997)

ABSTRACT

Objectives: The osteoconductive characteristics of different implant surface coatings are on the focus of current research. One of the present study aims to compare the vertical osteoconductivity at the implant distal end of experimental versus control implants in rabbits.

Methods: The study was conducted in 12 rabbits. The rabbits were divided into two groups: control and experimental. The control and treated (S-CP) S-CP and S-CP implants were inserted bilaterally in the distal end of the tibia. Six weeks after surgery, the rabbits were sacrificed. The tibiae were removed and the implants were extracted. The tibiae were sectioned and the implants were embedded in a resin block. The tibiae were sectioned and the implants were embedded in a resin block. The tibiae were sectioned and the implants were embedded in a resin block.

Results: The results of the study show that the vertical osteoconductivity at the implant distal end of experimental versus control implants was significantly different. The results of the study show that the vertical osteoconductivity at the implant distal end of experimental versus control implants was significantly different. The results of the study show that the vertical osteoconductivity at the implant distal end of experimental versus control implants was significantly different.

Conclusion: The results of the study show that the vertical osteoconductivity at the implant distal end of experimental versus control implants was significantly different. The results of the study show that the vertical osteoconductivity at the implant distal end of experimental versus control implants was significantly different. The results of the study show that the vertical osteoconductivity at the implant distal end of experimental versus control implants was significantly different.

Keywords: titanium implants, calcium-phosphate-coated surfaces, vertical osteoconductivity, rabbits.

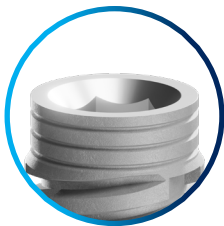
-coated surfaces - a pilot study in Rabbits. *Clinical Implant Dentistry and Related Research*. 2014; 16(2): 194-201. doi: 10.1111/ j.1708-8208.2012.00469.x

Schiegnitz E, Palarie V, Nacu V, Al-Nawas B, Kämmerer PW. Vertical osteoconductive characteristics of titanium implants with calcium-phosphate-coated surfaces - a pilot study in Rabbits. *Clinical Implant Dentistry and Related Research*. 2014; 16(2): 194-201. doi:10.1111/j.1708-8208.2012.00469.x

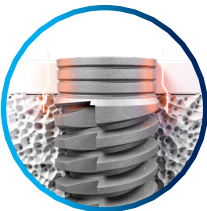
Palarie V, Bicer C, Lehmann KM, Zahalka M, Draenert FG, Kämmerer PW. Early outcome of an implant system with a resorbable adhesive calcium-phosphate coating—a prospective clinical study in partially dentate patients. *Clinical Oral Investigations*. 2011; 16(4): 1039-1048. doi: 10.1007/500784-011-0598-8.

Alfa Gate is proud to introduce the **TRIO Implant**, a sophisticated advancement in dental engineering designed for incomparable performance.

Engineered as a universal solution for **all bone densities (Types I-IV)**, the TRIO system is clinically proven to achieve **superior primary stability** and exceptional mechanical engagement, even in the most demanding clinical environments.



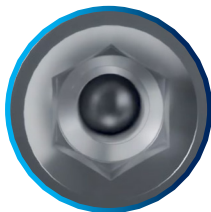
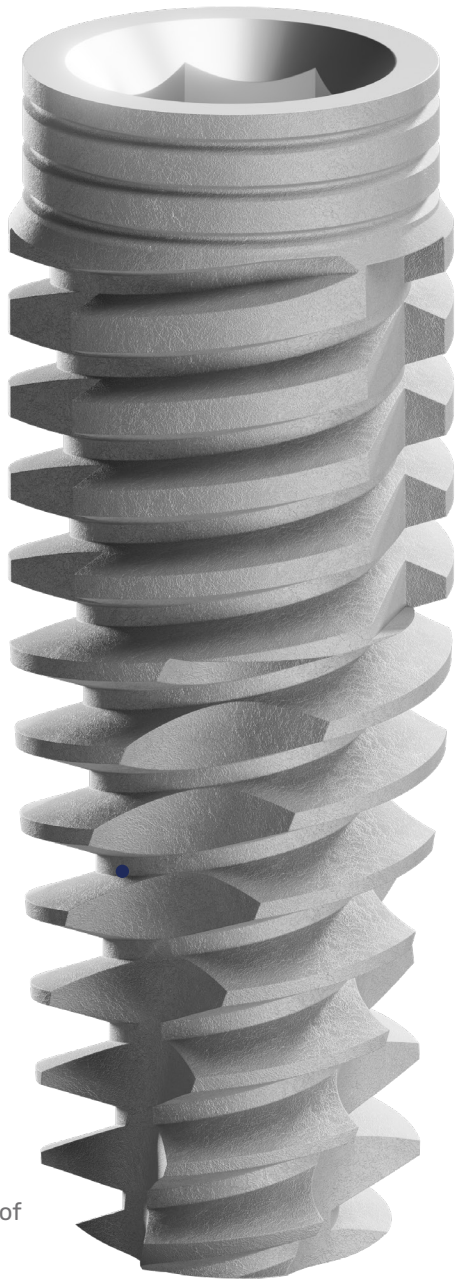
Triple Micro Rings increase BIC
Triple Micro-Rings that enhance bone formation and increase BIC.



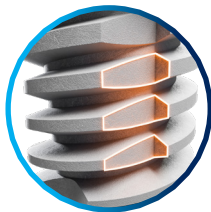
Coronally Reduced diameter
for less bone stress in the cortical bone.



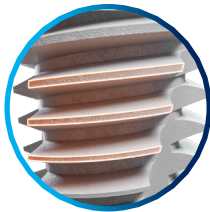
Triple Flutes Define Bone Compression
Triple flutes to improve distribution of axial forces, thus defining bone compression.



Implant Platforms
Standard Platform for all im-plant diameters 2.42mm.

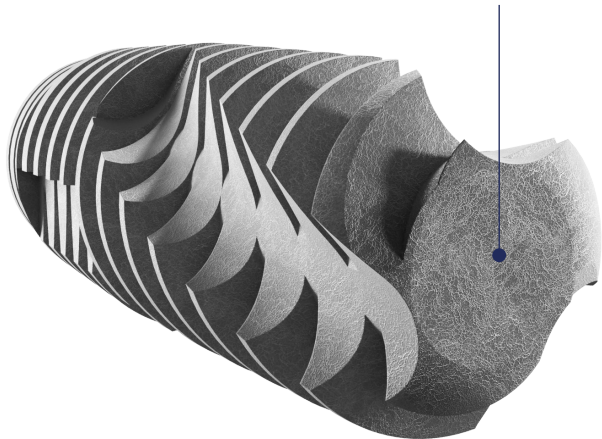



Triple Drilling Grooves
Drilling grooves enable cutting through the cortical bone for efficient insertion and torque distribution.



Unique Thread Design
to cut and condense the bone to increase implant primary stability.

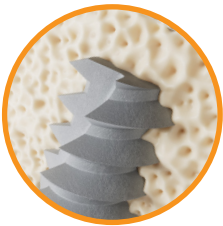
Flat Active Apex
A cutting flat active apex is ideal for immediate placement



Material: Titanium Alloy Ti 6Al 4V ELI | SLA surface
Item includes: Cover screw and implant carrier
Connection:  Screw type implant 2.42 mm internal hex
Surface: Sand-blasting and Acid-etching

| | | Length | | | | | | |
|----------|--------|----------|----------|-----------|------------|-----------|-----------|-----------|
| | | 6mm | 8mm | 10mm | 11.5mm | 13mm | 16mm | 19mm |
| Diameter | Ø 3.75 | DFCI6375 | DFCI8375 | DFCI10375 | DFCI115375 | DFCI13375 | DFCI16375 | DFCI19375 |
| | Ø 4.2 | DFCI642 | DFCI842 | DFCI1042 | DFCI11542 | DFCI1342 | DFCI1642 | DFCI1942 |
| | Ø 4.7 | DFCI647 | DFCI847 | DFCI1047 | DFCI11547 | DFCI1347 | DFCI1647 | - |
| | Ø 5.2 | DFCI652 | DFCI852 | DFCI1052 | DFCI11552 | DFCI1352 | DFCI1652 | - |

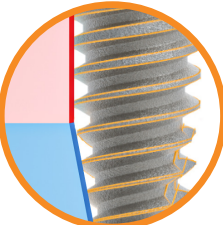
The **Max Implant** is engineered for high-performance clinical outcomes, featuring a specialized design that excels in immediate loading protocols. Its aggressive thread profile provides exceptional mechanical engagement, ensuring **maximum primary stability** even in soft bone or extraction sockets. Integrated **platform switching** works in harmony with the implant's architecture to preserve crestal bone and promote long-term soft-tissue health. This versatile solution empowers clinicians to achieve predictable, aesthetic results in the most demanding surgical scenarios.



MAX is the best implant for **immediate placement**.



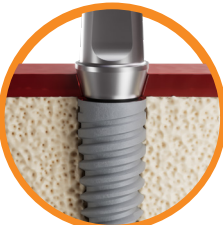
The **flat cutting apex** assures fast and soft insertion in the bone.



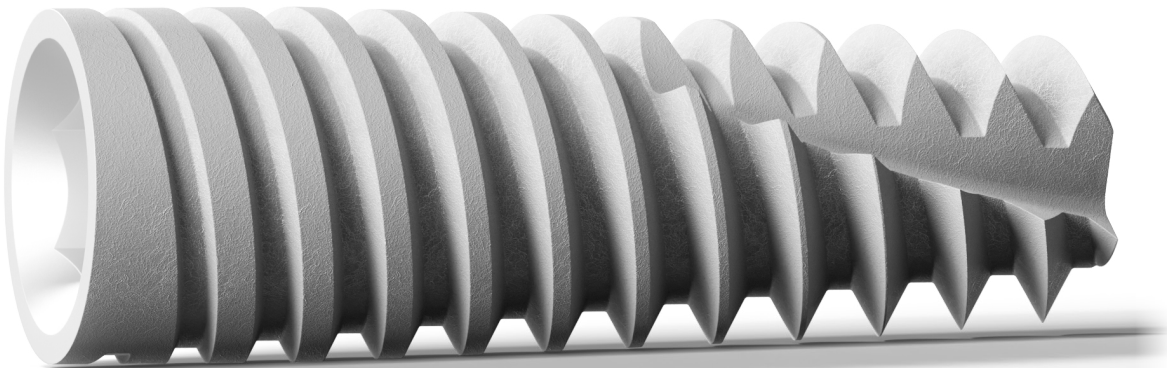
The unique Cycon™ body consists of **combined cylindrical and conical shapes**.



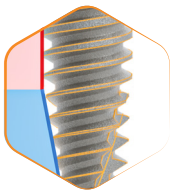
The implant internal hex connection has a **single prosthetic connection** for all implant diameters.



Thus, MAX is designed to achieve **superior primary stability**.



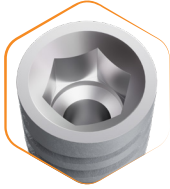
BODY CHARACTERISTICS



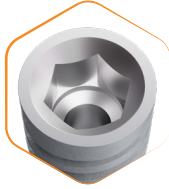
Combined Cylindrical and Conical Body



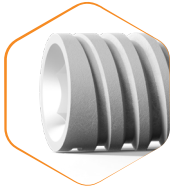
Flat and Cutting Apex




Variable Thread Design





Single Platform



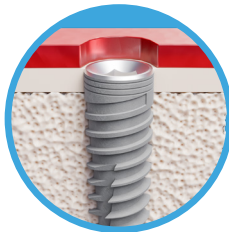
Internal Hex Connection with Conical Sealing Design

Material: Titanium Alloy Ti 6Al 4V ELI
Item includes: Cover screw and implant carrier
Connection:  Screw type implant 2.42 mm internal hex
Surface: Sand blasting and Acid-etching

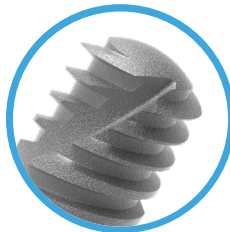


| | | Length | | | | | |
|--------|---|----------|--------|---------|----------|---------|---------|
| | | Diameter | | | | | |
| | | 6mm | 8mm | 10mm | 11.5mm | 13mm | 16mm |
| Ø 3.3 |  | - | MX833 | MX1033 | MX11533 | MX1333 | MX1633 |
| Ø 3.75 |  | - | MX8375 | MX10375 | MX115375 | MX13375 | MX16375 |
| Ø 4.2 |  | MX642 | MX842 | MX1042 | MX11542 | MX1342 | MX1642 |
| Ø 4.7 |  | MX647 | MX847 | MX1047 | MX11547 | MX1347 | MX1647 |
| Ø 5.2 |  | MX652 | MX852 | MX1052 | MX11552 | MX1352 | MX1652 |

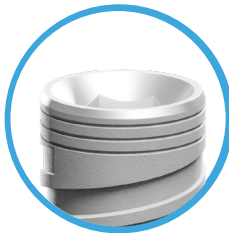
The **Porous Implant** features a high-performance **SLA surface** that maximizes bone-to-implant contact and accelerates osseointegration. Its conical body and sharp dual threads ensure superior primary stability across all bone types, making it ideal for immediate loading. Integrated **platform switching and micro-rings** preserve alveolar bone while enhancing soft tissue volume for natural-looking esthetics. For maximum efficiency, a **single internal hex platform** is used for all diameters to simplify restorations and reduce inventory overhead.



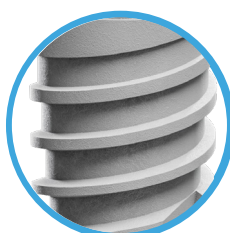
Porous implant offers a solution for a **wide range** of clinical cases.



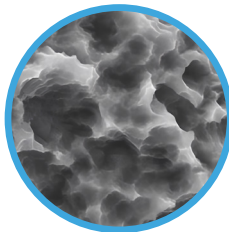
The lower implant body has a **domed apex** to allow safer dental work near sensitive anatomical structures.



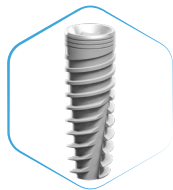
Micro-rings are implemented for **maximal cortical bone preservation**.



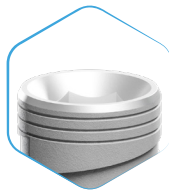
The implant's variable threads accomplish **excellent primary stability**.



In addition, it has a **highly controlled SLA surface**, which favors successful long-term osseointegration.



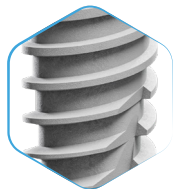
Conical Body



Single Platform



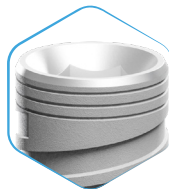
Domed Apex



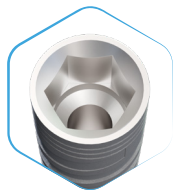
Variable Thread Design



Switching Platform



Micro-rings





Internal Hex Connection with Conical Sealing Design

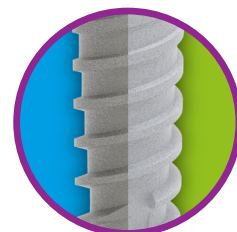
- Material:
Item includes:
Connection:
Surface:

Titanium Alloy Ti 6Al 4V ELI
Cover screw and implant carrier
Screw type implant 2.42 mm internal hex
Sand blasting and Acid-etching

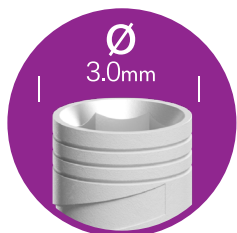


| | | Length | | | | | | |
|----------|---|---------|----------|-----------|------------|-----------|-----------|-----------|
| Diameter | | 6mm | 8mm | 10mm | 11.5mm | 13mm | 16mm | 19mm |
| Ø 3.3 |  | - | SCIP833 | SCIP1033 | SCIP11533 | SCIP1333 | SCIP1633 | - |
| Ø 3.75 |  | - | SCIP8375 | SCIP10375 | SCIP115375 | SCIP13375 | SCIP16375 | SCIP19375 |
| Ø 4.2 |  | SCIP642 | SCIP842 | SCIP1042 | SCIP11542 | SCIP1342 | SCIP1642 | SCIP1942 |
| Ø 4.7 |  | SCIP647 | SCIP847 | SCIP1047 | SCIP11547 | SCIP1347 | SCIP1647 | - |
| Ø 5.2 |  | SCIP652 | SCIP852 | SCIP1052 | SCIP11552 | SCIP1352 | SCIP1652 | - |
| Ø 6.0 |  | SCIP66 | SCIP86 | SCIP106 | SCIP1156 | SCIP136 | - | - |

The **S-line Implant** is the ultimate 3.0 mm solution for narrow ridges, specifically engineered to eliminate the need for bone augmentation. Its high-strength design withstands an exceptional fatigue load of 325N, ensuring long-term survival and mechanical reliability. Available in both Bioactive and SLA surfaces, the system supports a full prosthetic range, from CAD-CAM to Multi-Unit restorations.



It is available in two surfaces: the unique Bioactive **CaP hydrophilic surface** and the **SLA surface**.



S-line is the optimal **3.0 mm** diameter implant for narrow and tight ridges.



The complete prosthetic solution for S-line implant includes **CAD/CAM** products.



The implant's connection with its internal screw is specifically designed to accomplish a high fatigue point of **325 Ncm**.



The implant **eliminates** the need for bone augmentation in **narrow ridges**.



It allows for **all crown restoration** options, such as screw-retained, cemented, ball attachment and Multi-Unit.



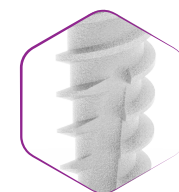
BODY CHARACTERISTICS



Conical Body



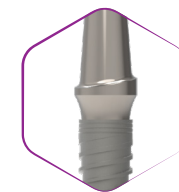
Domed Apex



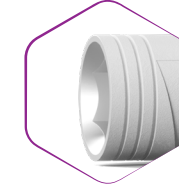
Variable Thread Design



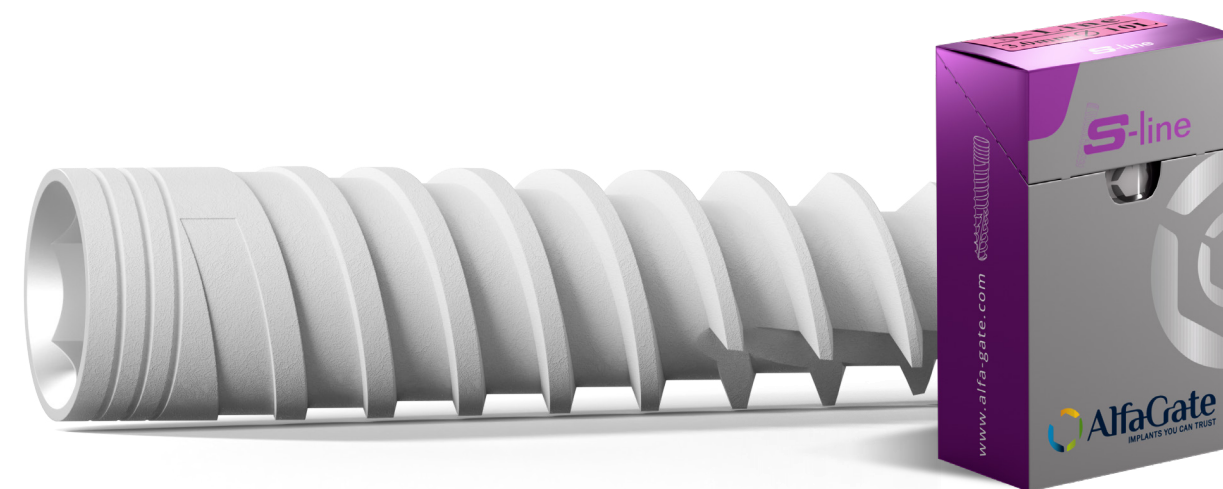
Micro-rings



Switching Platform



Internal Hex Connection with Conical Sealing Design



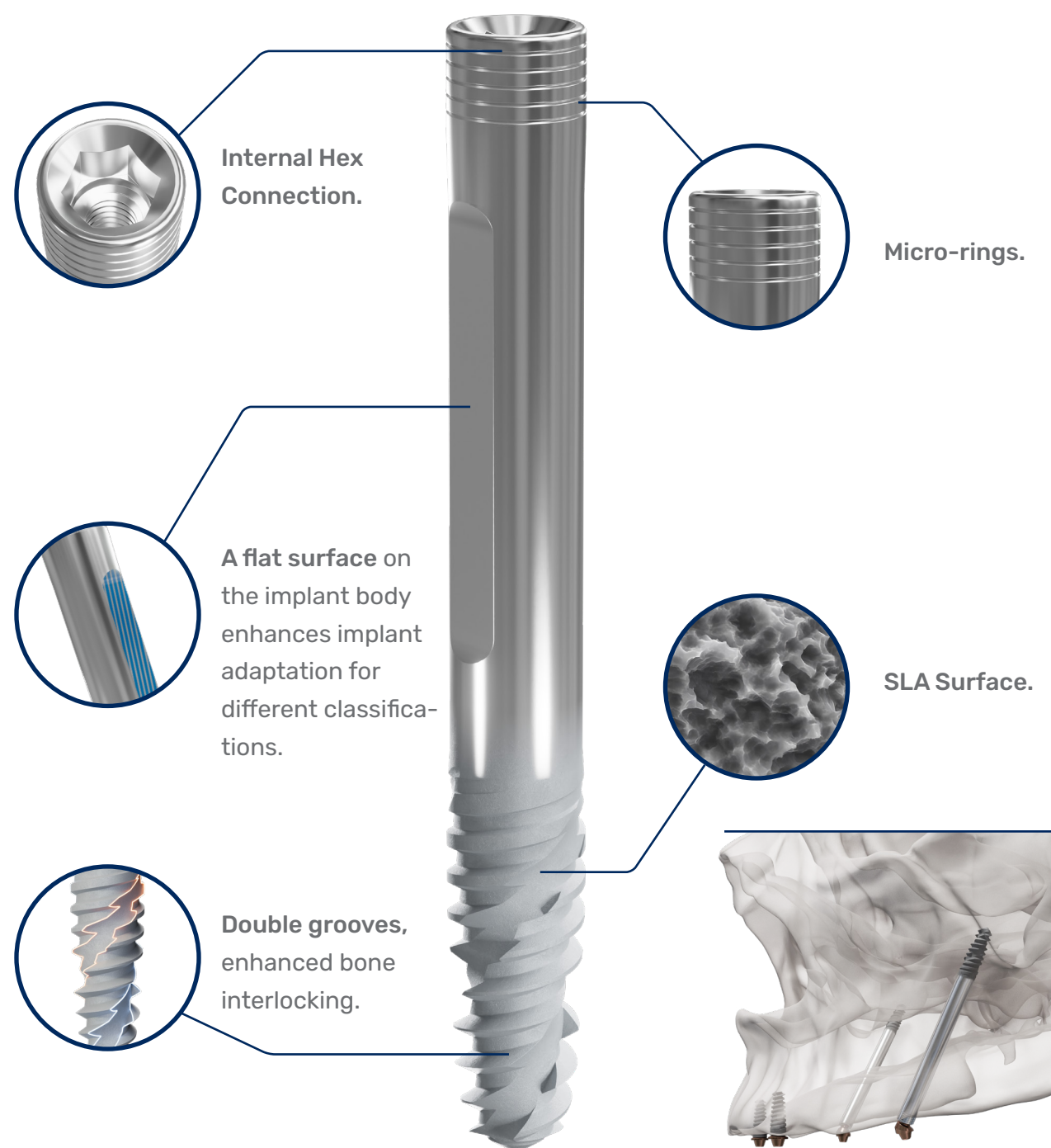
Material:
Item includes:
Connection:

Titanium Alloy Ti 6Al 4V ELI | **Bioactive Surface-CaP** / **SLA Surface**
Cover screw and implant carrier
Screw type implant 2.0 mm internal hex

| | | Length | | | |
|----------|-------|--|----------|---------|------------------|
| | | 10mm | 11.5mm | 13mm | 16mm |
| Diameter | Ø 3.0 | S-L103 | S-L1153 | S-L133 | S-L163 |
| | | Surface: Bioactive CaP surface | | | Bioactive |
| Diameter | Ø 3.0 | S-LP103 | S-LP1153 | S-LP133 | S-LP163 |
| | | surface: Sand blasting and Acid-Etching | | | SLA |

The Zygomatic Implant provides an advanced solution to bypass complex bone grafting, offering a faster treatment process with reduced healing times. Its design features a hexagonal internal connection, a smooth shaft, and a tapered threaded apex to ensure optimal stability in the zygomatic bone.

To enhance patient comfort, the implant includes a unique flat-sided body that alleviates pressure on surrounding soft tissues.

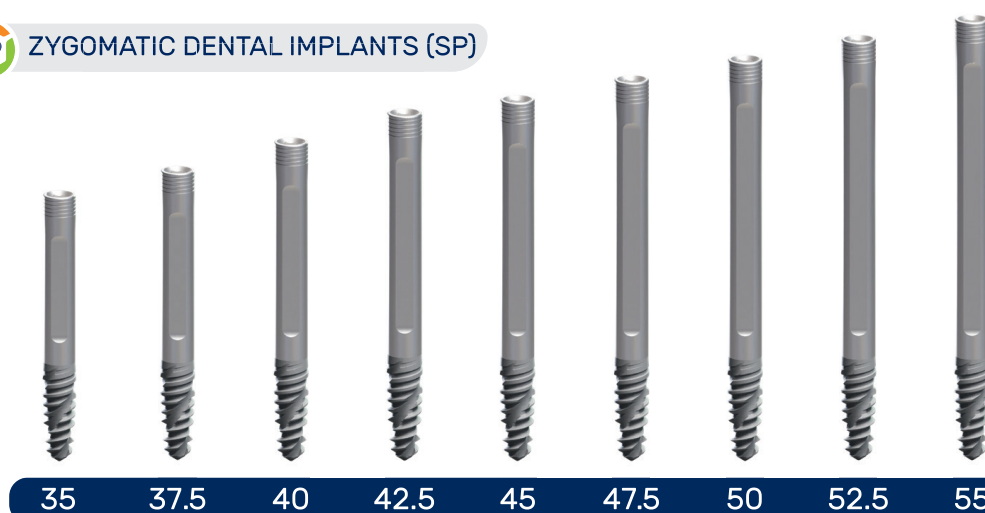


ZYGOMATIC DENTAL IMPLANT

| Ø | 4.2 | 4.2 | 4.2 | 4.2 | 4.2 |
|--------|----------|----------|----------|----------|----------|
| Length | 35 | 37.5 | 40 | 42.5 | 45 |
| Code | AITI3542 | AITI3742 | AITI4042 | AITI4242 | AITI4542 |

| Ø | 4.2 | 4.2 | 4.2 | 4.2 |
|--------|----------|----------|----------|----------|
| Length | 47.5 | 50 | 52.5 | 55 |
| Code | AITI4742 | AITI5042 | AITI5242 | AITI5542 |

SP ZYGOMATIC DENTAL IMPLANTS (SP)



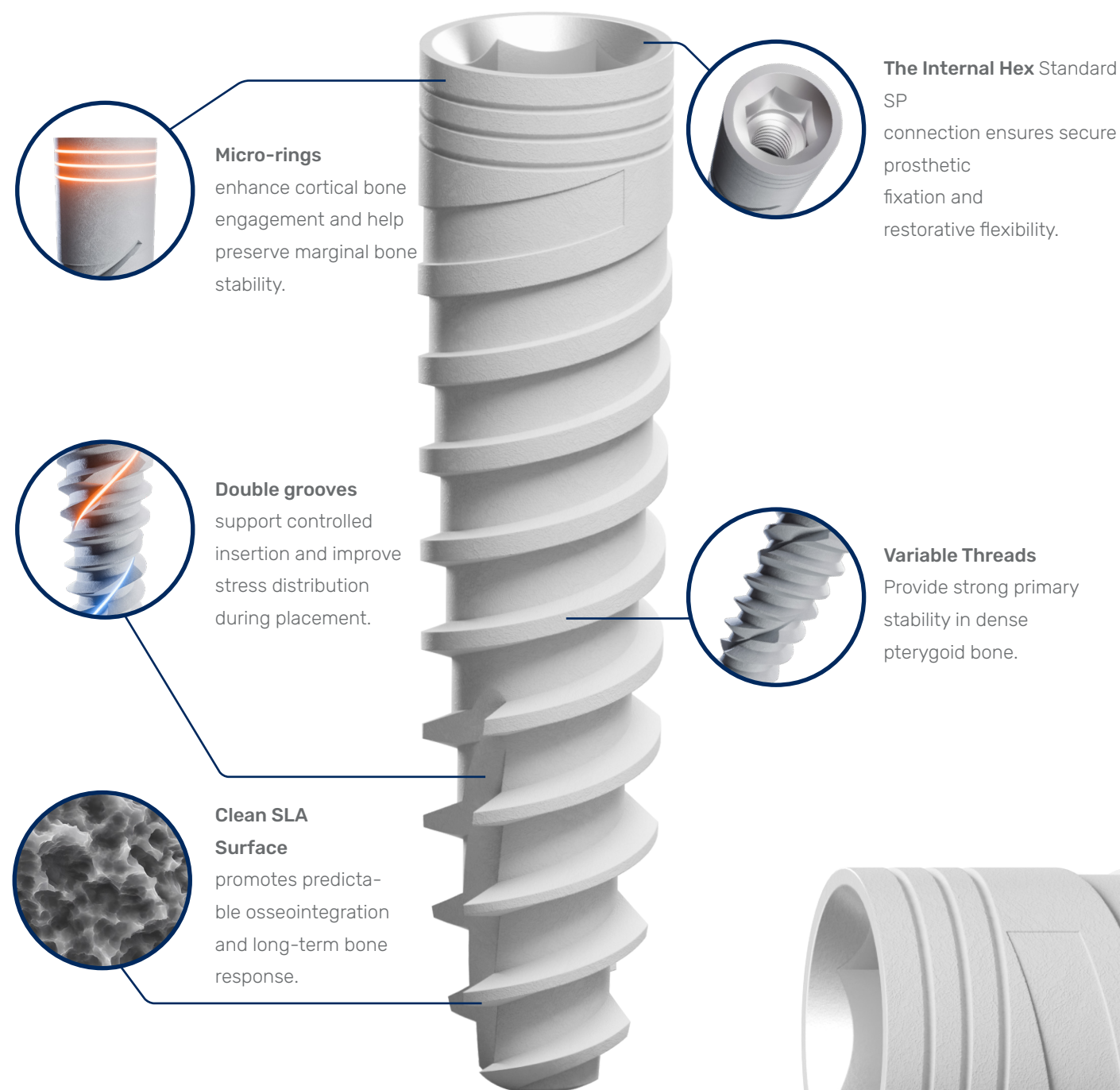
Zygomatic Kit

The Zygomatic Kit Designed to streamline the surgical workflow and ensure maximum safety during implant placement.

For more details, see page 79

PTERYGOID

The Pterygoid Implant is designed for advanced posterior maxillary cases where bone height is limited, offering a solution with a length reaching up to 22 mm to engage dense cortical bone in the pterygoid region and achieve strong primary stability. This extended length allows clinicians to bypass compromised alveolar bone, reduce the need for sinus grafting, and support immediate or early loading protocols.

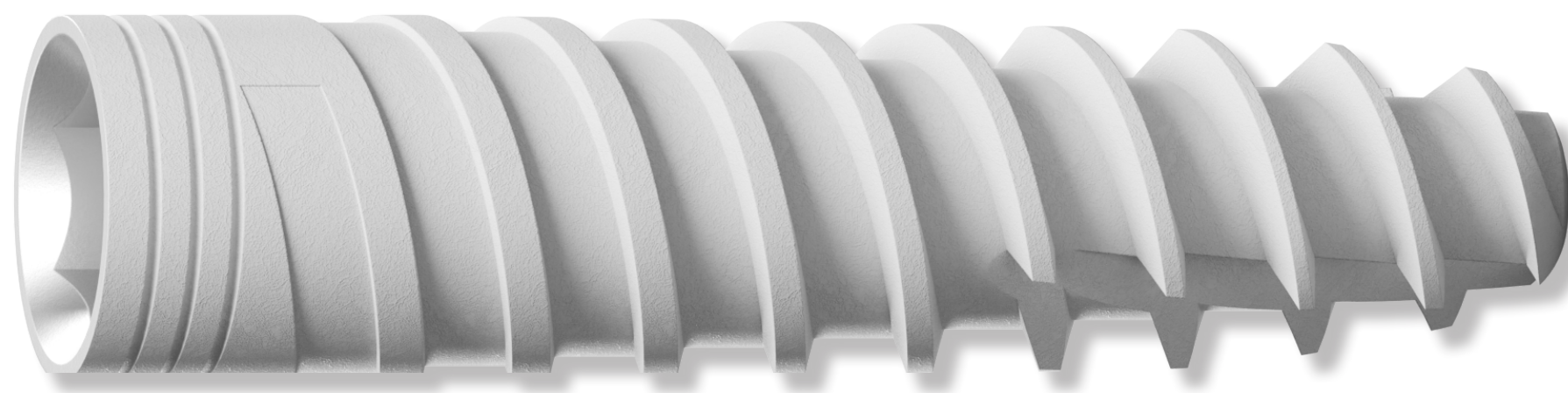


Domed Apex
allows safer navigation and atraumatic penetration in challenging anatomy.

PTERYGOID DENTAL IMPLANT

| Ø | 4.2 | 4.2 | 4.2 |
|--------|----------|---------|----------|
| Length | 16 | 19 | 22 |
| Code | SCIP1947 | SCIP196 | SCIP1952 |

Material: Titanium Alloy Ti 6Al 4V ELI | [SLA Surface](#)
Item includes: Cover screw and implant carrier
Connection: Screw type implant 2.0 mm internal hex



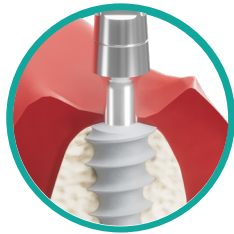
The **Patro Implant** is a unique **one-piece** solution engineered specifically for clinical cases with severely limited vertical bone height. Its standout feature is a **flexible neck** that can be adjusted up to **25°**, allowing for precise angulation and optimal prosthetic alignment. This versatile design ensures high primary stability and streamlines the restorative process by eliminating the need for complex bone augmentation.



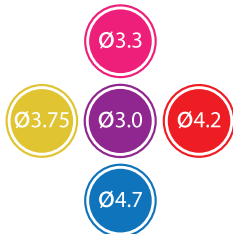
Patro offers the perfect solution for a unique one-piece implant with its flexible neck design that reaches **up to 25° angulation**.



The implant's versatility offers immediate loading in **multiple-unit restorations**.



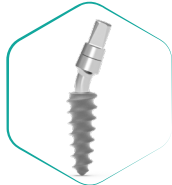
Conveniently it can be placed in the tightest and **narrowest ridges**.



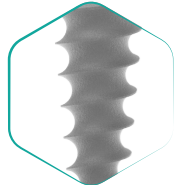
A wide range of diameters from 3.0mm up to the **special 4.7mm**.



BODY CHARACTERISTICS



Flexible Neck



Sharp and Deep Threads

Material:
Item includes:
Connection:
Surface:

Titanium Alloy Ti 6Al 4V ELI
Implant carrier
One-Piece implant with an integrated abutment
Sand blasting and Acid-etching

| | | Length | | | | | |
|----------|--------|---------|---------|----------|-----------|----------|----------|
| | | 6mm | 8mm | 10mm | 11.5mm | 13mm | 16mm |
| Diameter | Ø 3.0 | - | - | PTR103 | PTR1153 | PTR133 | PTR163 |
| | Ø 3.3 | - | PTR833 | PTR1033 | PTR11533 | PTR1333 | PTR1633 |
| | Ø 3.75 | PTR6375 | PTR8375 | PTR10375 | PTR115375 | PTR13375 | PTR16375 |
| | Ø 4.2 | PTR642 | PTR842 | PTR1042 | PTR11542 | PTR1342 | PTR1642 |
| | Ø 4.7 | PTR647 | PTR847 | PTR1047 | PTR11547 | PTR1347 | PTR1647 |

Platform One-Piece

One-Piece Implant Analog

| | |
|-----------|---------|
| Height mm | 21mm |
| Ref. | AGM-215 |

Material: Stainless Steel



Transfer for One-Piece Implant

| | |
|-----------|---------|
| Height mm | 11mm |
| Ref. | AGM-306 |

Material: Plastic



IMPLANTS

CONICAL CONNECTION

| | |
|---------|-------|
| M+ RP | 28-29 |
| M+ NP | 30-31 |
| Trio RC | 32-33 |

The Alfa Gate conical connection range—comprising the M+ NP, M+ RP, and Trio RC—is engineered for superior primary stability and a robust bacterial seal. The M+ models feature a specialized 22° Morse taper, while the Trio RC utilizes an 11° Morse taper, both integrated with hexagonal interlocking for maximum mechanical integrity. This advanced design incorporates a switching platform and a back-tapered neck to preserve cortical bone and enhance long-term aesthetic outcomes.



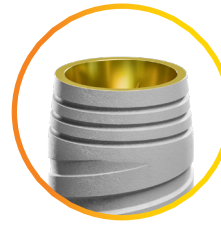
The M+ RP (Regular Platform) is a conical connection implant designed to achieve high primary stability, particularly in soft bone and post-extraction procedures. It features a back-tapered coronal design to maximize cortical bone preservation and a switching platform to enhance aesthetic outcomes.



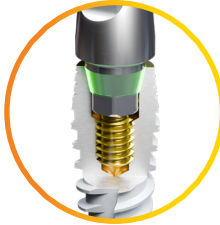
Switching Platform characteristic achieves optimal esthetic results with minimal effort.



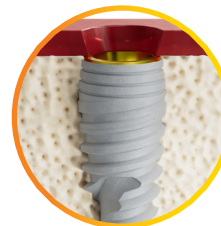
24° Conical Connection.



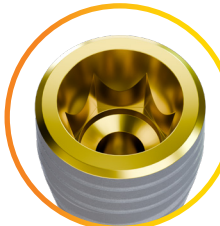
The back tapered coronal body is designed to achieve **maximum cortical bone preservation**.



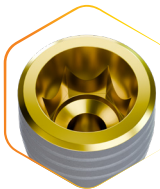
M+ conical connection implant is designed to accomplish **high primary stability**.



Its special features suit implant placement in **soft bone** and **post-extraction procedures**.



Regular Platform.



Conical Connection with Hexagonal Interlocking



Flat Apex



Back Tapered Coronal Design



Variable Thread Design

- Material:** Titanium Alloy Ti 6Al 4VELI
- Item includes:** Cover screw and implant carrier
- Connection:** Screw type implant conical connection
- Surface:** Sand blasting and Acid-etching
- Platform:** Conical connection



| Diameter | Length | | | | | |
|----------|--------|---------|----------|---------|---------|--|
| | 8mm | 10mm | 11.5mm | 13mm | 16mm | |
| Ø 4.3 | SCA843 | SCA1043 | SCA11543 | SCA1343 | SCA1643 | |
| Ø 5.0 | SCA85 | SCA105 | SCA1155 | SCA135 | SCA165 | |

The **M+ NP (Narrow Platform)** is a conical connection implant specifically designed to provide high primary stability, particularly in soft bone and post-extraction scenarios. It features a narrow **3.5mm** diameter and incorporates a back-tapered coronal body and a switching platform to maximize cortical bone preservation and optimize long-term aesthetic outcomes.



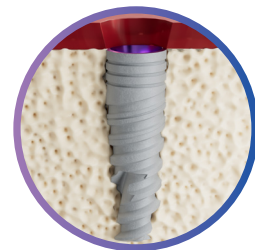
Switching Platform characteristic achieves optimal esthetic results with minimal effort.



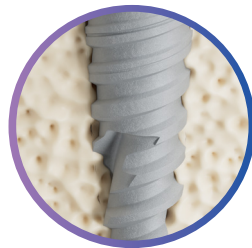
24° Conical connection.



Micro-rings are implemented for **maximal cortical bone preservation**.



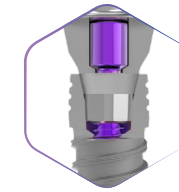
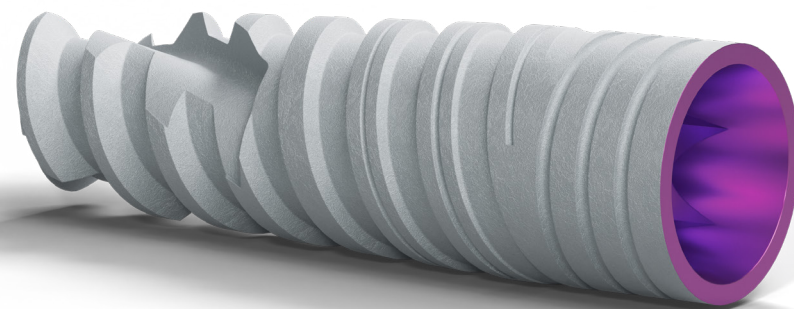
M+ conical connection implant is designed to accomplish **high primary stability**.



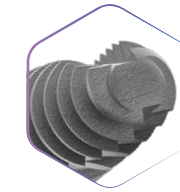
Its special features suit implant placement in **soft bone** and **post-extraction procedures**.



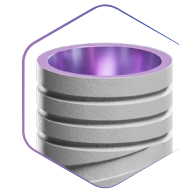
Narrow Platform.



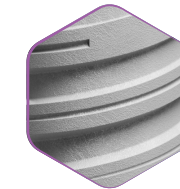
Conical Connection with Hexagonal Interlocking



Flat Apex



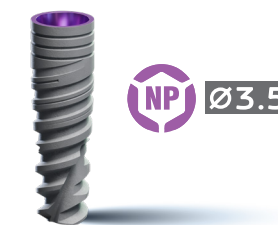
Triple Micro-Rings




Variable Thread Design

Material: Titanium Alloy Ti 6Al 4VELI
Item includes: Cover screw and implant carrier
Connection: Screw type implant conical connection

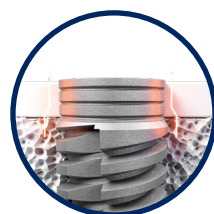
Surface: Sand blasting and Acid-etching
Platform: Conical connection **NP**



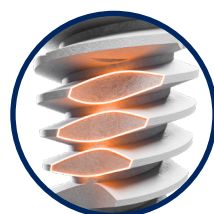
| Length | 8mm | 10mm | 11.5mm | 13mm | 16mm | |
|----------|-------|--------|---------|----------|---------|---------|
| Diameter | Ø 3.5 | SCA835 | SCA1035 | SCA11535 | SCA1335 | SCA1635 |



Alfa Gate is proud to present the revolutionary **Trio RC**, an incomparable implant solution engineered for superior primary stability across all bone types. Featuring a high-precision 11° Morse taper conical connection, the Trio RC provides a secure bacterial seal and exceptional mechanical strength. Its advanced design is clinically proven to deliver predictable results and long-term success, making it the ideal choice for even the most demanding surgical cases.



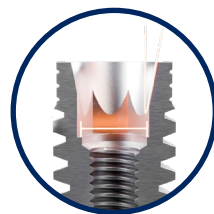
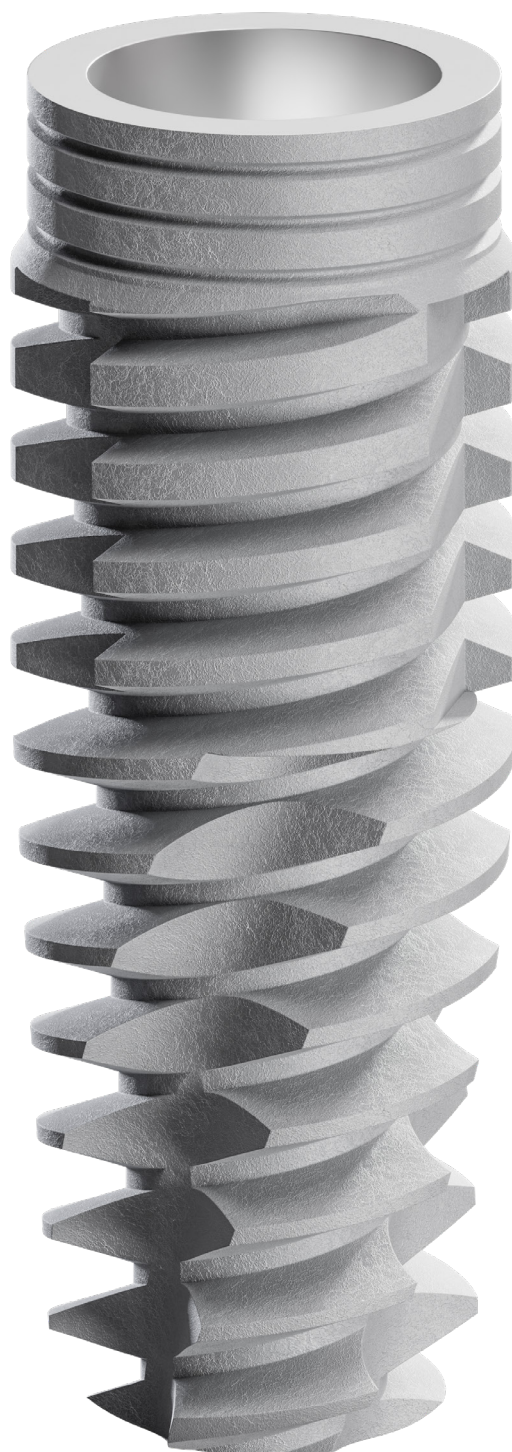
Cortical bone
less stress.
Soft bone
more stability.



Triple Flutes Define Bone Compression
improve distribution of axial forces, defining bone compression.



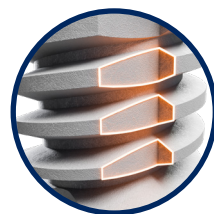
Body and core
optimized force distribution



11° Conical connection.
2.5mm Hex.



Triple Micro Rings
enhance bone formation and increase BIC (Bone implant contact).

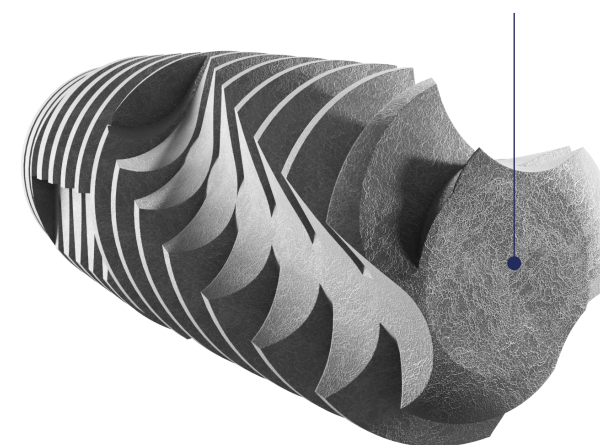


Triple Drilling Grooves
enables cutting through the cortical bone for efficient insertion and torque equalization.

Upper groove shapes the bone to fit seamlessly with the neck.

Flat Active Apex

A cutting flat active apex is ideal for immediate placement




Material:




Item includes:

Connection:

Surface:

Platform:

Titanium Alloy Ti 6Al 4V ELI | SLA surface
Cover screw and implant carrier
Screw type implant conical connection
Sand blasting and Acid-etching
Regular Conical Platform 

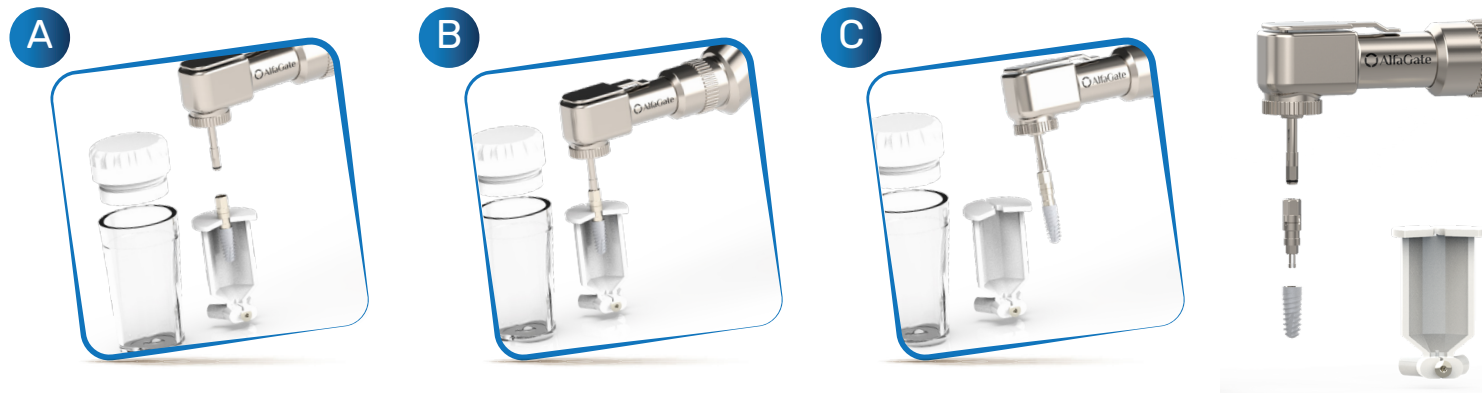
| Diameter | | Length | | | |
|----------|---|----------|-----------|------------|-----------|
| | | 8mm | 10mm | 11.5mm | 13mm |
| Ø 4.0 |  | DFCIP842 | DFCIP1042 | DFCIP11542 | DFCIP1342 |
| Ø 4.5 |  | DFCIP847 | DFCIP1047 | DFCIP11547 | DFCIP1347 |
| Ø 5.0 |  | DFCIP852 | DFCIP1052 | DFCIP11552 | DFCIP1352 |

HANDLING

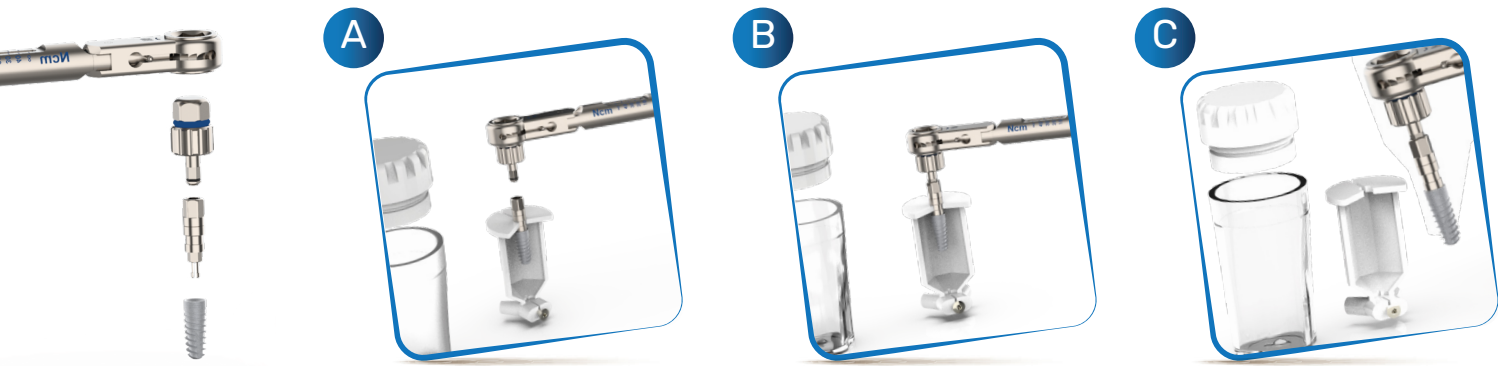
Alfa Gate FIT carrier makes it possible to insert all implants regardless of the platform, with a single set of keys.

The Fit Carrier must be used with torque insertion up to 35 Ncm!

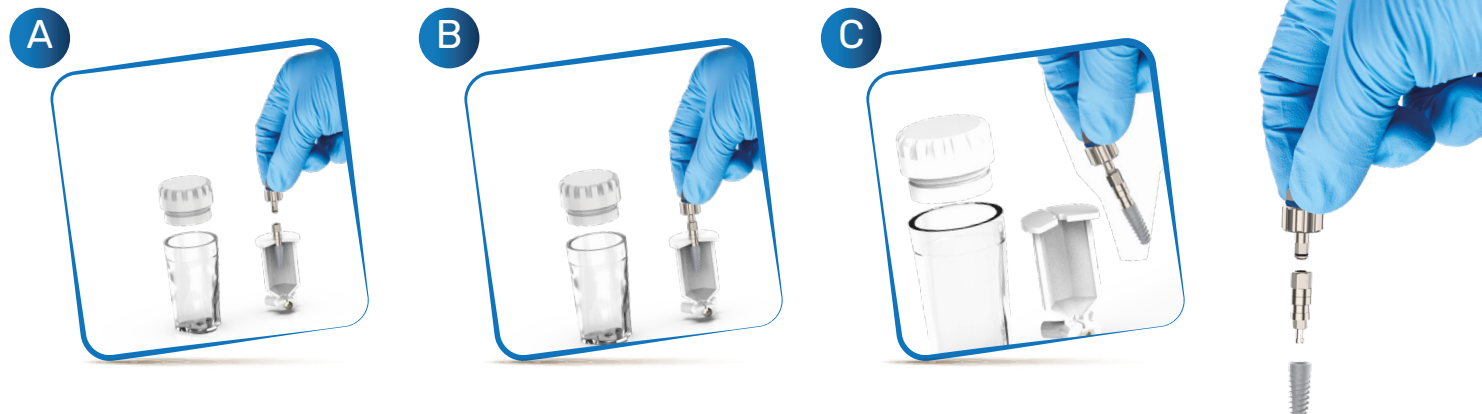
Hand-piece insertion



Ratchet insertion



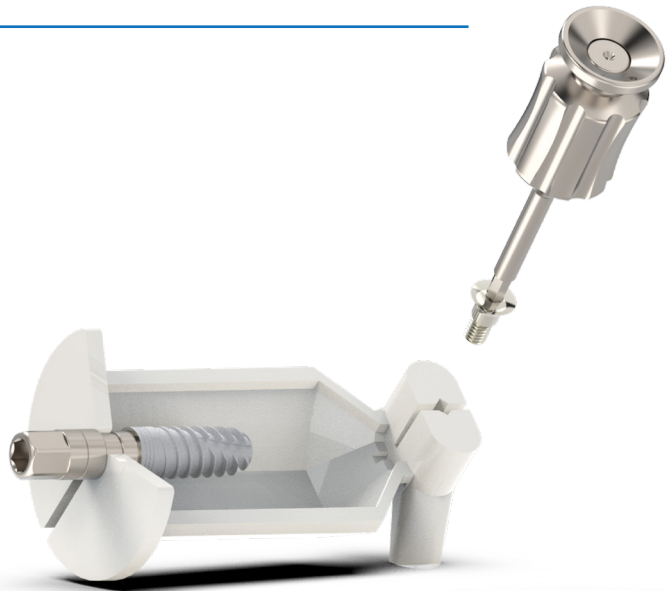
Manual insertion



*The final insertion is done with the matching insertion key!

Same
Carrier
for all
implants

Cover Screw



Anti-slip ring



Packaging



Important: to ensure correct and safe transfer of the implant and optimal insertion, the implant insertion key must be fully inserted into the upper hexagon of the mount.



INTERNAL HEX PROSTHETICS



S-line PROSTHETIC

Healing Cap Ø3.7mm

| | | | | |
|-----------|------------|------------|------------|------------|
| Height mm | 2mm | 3mm | 4mm | 5mm |
| Ref. | AGM-203-2S | AGM-203-3S | AGM-203-4S | AGM-203-5S |



Additional Info: Recommended torque - manual only light finger tight (5-10 Ncm) using hand driver 1.25 mm.

Material: Titanium

Impression Transfers

| | | | |
|-------------|--------------------------|---|---|
| Description | for open tray impression | for closed tray impression click connection | for closed tray impression screw connection |
| Height mm | 14mm | 9mm | 11mm |
| Ref. | AGM-301-SL | AGM-302-SL | AGM-303-SL |



Additional Info: Recommended torque - manual only light finger tight (5-10 Ncm) using hand driver 1.25 mm.

Material: Stainless Steel

Implant Analog

| | |
|-------------|---|
| Description | S-line implant analog with internal hex 2.0mm |
| Height mm | 12mm |
| Ref. | AGM-214-SL |



Material: Titanium

Abutments

| | | | | | |
|-------------|-----------|---------------|----------------|----------------|----------------|
| Description | Straight | 15° angulated | Shoulder - 1mm | Shoulder - 2mm | Shoulder - 3mm |
| Height mm | 10mm | 11mm | 10mm | 10mm | 10mm |
| Ref. | AGM-100-S | AGM-115-S | AGM-602-1S | AGM-602-2S | AGM-602-3S |



Additional Info: Recommended torque - 20 Ncm.

Material: Titanium

Direct Prosthetic Screw

| | |
|-------------|--------------|
| Description | S-line screw |
| Height mm | 7.7mm |
| Ref. | AGM-202S |



Additional Info: Recommended torque - 20 Ncm.

Material: Titanium

Temporary Abutments

| | | |
|-------------|------------|------------|
| Description | Hex | Non-Hex |
| Height mm | 10mm | 10mm |
| Ref. | AGM-903-SL | AGM-904-SL |



Additional Info: Recommended torque - 15 Ncm. - Supplied with prosthetic screw

Material: PEEK

Plastic Abutments for Casting Height 11mm

| | | |
|-------------|--------|---------|
| Description | Hex | Non-Hex |
| Ref. | AGM-P6 | AGM-P5 |



Additional Info: Recommended torque - 20 Ncm. - Supplied with prosthetic screw .

Material: Plastic

S-line MULTI-UNIT

Straight Multi-Unit

| | | | | | |
|-----------|-------------|-------------|-------------|-------------|-------------|
| Height mm | 1mm | 2mm | 3mm | 4mm | 5mm |
| Ref. | AGM-700-1-S | AGM-700-2-S | AGM-700-3-S | AGM-700-4-S | AGM-700-5-S |



17° Angulated Multi-Unit

| | |
|-----------|-------------|
| Height mm | 1.5mm |
| Ref. | AGM-717-1-S |



Multi-Unit Prosthetics

| | | | |
|-------------|--------------------|---------|-------------|
| Description | Transfer open tray | Analog | Healing Cap |
| Height mm | 22mm | 12mm | 5mm |
| Ref. | AGM-508 | AGM-507 | AGM-509 |



Additional Info: Recommended torque - 5 Ncm. - Using hex driver 1.25 mm.

Material: Stainless Steel / Titanium

Multi-Unit Prosthetics

| | | | | |
|-------------|-------------------------|--------------------|------------------|-------------------------|
| Description | Prosthetic screw - 2pcs | Temporary cylinder | Plastic cylinder | Temporary PEEK cylinder |
| Height mm | 4.5mm | 12mm | 12mm | 12mm |
| Ref. | AGM-506-SC | AGM-505 | AGM-506 | AGM-512 |



Additional Info: Recommended torque - manual only light finger tight (5-10 Ncm) using hand driver 1.25 mm.

Material: Titanium / Plastic / Peek

CAD/CAM Prosthetics

Scan Post

| | |
|-----------|------|
| Height mm | 7mm |
| Material | PEEK |
| Ref. | SBMU |



Digital Analog

| | |
|-----------|-----------------|
| Height mm | 10mm |
| Material | Stainless Steel |
| Ref. | AD-MU |



Non-Engaging Ti-Base

| | |
|-----------|----------|
| Height mm | 0.3mm |
| Material | Titanium |
| Ref. | TBMU |



Multi-Unit Sets

| | | | | | |
|-------------|---------------------|--------------|--------------|--------------|--------------|
| Description | Straight Multi-Unit | | | | |
| Height mm | 1mm | 2mm | 3mm | 4mm | 5mm |
| Ref. | AGM-700-1-SK | AGM-700-2-SK | AGM-700-3-SK | AGM-700-4-SK | AGM-700-5-SK |

| | | | | | |
|-------------|--------------------------|--|--|--|--|
| Description | 17° Angulated Multi-Unit | | | | |
| Height mm | 1.5mm | | | | |
| Ref. | AGM-717-1-SK | | | | |

All Multi-Unit Sets include:

| | | | |
|-------------|----------|---------|-------------|
| Description | Transfer | Analog | Healing Cap |
| Ref. | AGM-508 | AGM-507 | AGM-509 |

| | | | |
|-------------|--------------|--------------------|------------------|
| Description | Screw - 2pcs | Temporary cylinder | Plastic cylinder |
| Ref. | AGM-506-SC | AGM-505 | AGM-506 |



S-line BALL ATTACHMENT

Ball Attachment Ø3.7mm

| | | | | | |
|-----------|------------|------------|------------|------------|------------|
| Height mm | 1mm | 2mm | 3mm | 4mm | 5mm |
| Ref. | AGM-105-1S | AGM-105-2S | AGM-105-3S | AGM-105-4S | AGM-105-5S |

Additional Info: Recommended torque - 20 Ncm. - Using hex driver 1.25 mm.

Material: Titanium



Ball Attachment Prosthetics

| | | |
|------------------|----------------------|------------------|
| Description | Standard plastic cap | Soft plastic cap |
| Ref. | AGM-105-P | AGM-105-PS |
| Hard plastic cap | Metal housing | Protective disk |
| AGM-105-PH | AGM-105-M | AGM-105-D |

Ball Attachment sets

| | | | | | |
|-----------|-------------|-------------|-------------|-------------|-------------|
| Height mm | 1mm | 2mm | 3mm | 4mm | 5mm |
| Ref. | AGM-105-1SK | AGM-105-2SK | AGM-105-3SK | AGM-105-4SK | AGM-105-5SK |



All Ball Attachment Sets include:

| | | | | | |
|-------------|----------------------|------------------|------------------|---------------|-----------------|
| Description | Standard plastic cap | Soft plastic cap | Hard plastic cap | Metal housing | Protective disk |
| Ref. | AGM-105-P | AGM-105-PS | AGM-105-PH | AGM-105-M | AGM-105-D |

S-line ALFA-LOCK

Alfa-Lock Attachment Ø4.5mm

| | | | | | |
|-----------|------------|------------|------------|------------|------------|
| Height mm | 1mm | 2mm | 3mm | 4mm | 5mm |
| Ref. | AGM-106-1S | AGM-106-2S | AGM-106-3S | AGM-106-4S | AGM-106-5S |

Additional Info: Recommended torque - 20 Ncm. - Using hex driver 1.25 mm.

Material: Titanium



All Alfa-Lock Prosthetics

| | | |
|------------------|----------------------|------------------|
| Description | Standard plastic cap | Soft plastic cap |
| Ref. | AGM-106-P | AGM-106-PS |
| Hard plastic cap | Metal housing | Protective disk |
| AGM-106-PH | AGM-106-M | AGM-106-D |

Alfa-Lock sets

| | | | | | |
|-----------|-------------|-------------|-------------|-------------|-------------|
| Height mm | 1mm | 2mm | 3mm | 4mm | 5mm |
| Ref. | AGM-106-1SK | AGM-106-2SK | AGM-106-3SK | AGM-106-4SK | AGM-106-5SK |



All Alfa-Lock Sets include:

| | | | | | |
|-------------|----------------------|------------------|------------------|---------------|-----------------|
| Description | Standard plastic cap | Soft plastic cap | Hard plastic cap | Metal housing | Protective disk |
| Ref. | AGM-106-P | AGM-106-PS | AGM-106-PH | AGM-106-M | AGM-106-D |

Scan Post

| | |
|-----------|------|
| Height mm | 10mm |
| Material | PEEK |
| Ref. | SBSL |



Digital Analog

| | |
|-----------|-----------------|
| Height mm | 10mm |
| Material | Stainless Steel |
| Ref. | AD-SL |



Engaging Ti-Base

| | |
|-----------|----------|
| Height mm | 0.5mm |
| Material | Titanium |
| Ref. | TBSL-05 |



| | |
|-----------|----------|
| Height mm | 1.5mm |
| Material | Titanium |
| Ref. | TBSL-15 |



| | |
|-----------|----------|
| Height mm | 3.0mm |
| Material | Titanium |
| Ref. | TBSL-30 |



Non-Engaging Ti-Base

| | |
|-----------|------------|
| Height mm | 0.5mm |
| Material | Titanium |
| Ref. | TBSL-NH-05 |



| | |
|-----------|------------|
| Height mm | 1.5mm |
| Material | Titanium |
| Ref. | TBSL-NH-15 |



| | |
|-----------|------------|
| Height mm | 3.0mm |
| Material | Titanium |
| Ref. | TBSL-NH-30 |



Scan Body Set

S-LINE PLATFORM I.-MM
-oPCS.



S-line SBSL-I.-K

ALL SCAN BODY SETS
INCLUDE:

HEX DRIVER
1,60MM - (LONG)
AGM-400



Concave Healing Cap Ø4.5mm



| | | | |
|-----------|------------|------------|------------|
| Height mm | 2mm | 3mm | 4mm |
| Ref. | AGM-203-2C | AGM-203-3C | AGM-203-4C |

Additional Info: Recommended torque - manual only light finger tight (5-10 Ncm) using hand driver 1.25 mm.
Material: Titanium

Standard Healing Cap Ø4.2mm



| | | | | | | | |
|-----------|-----------|-----------|-----------|-----------|-----------|-----------|-----------|
| Height mm | 1mm | 2mm | 3mm | 4mm | 5mm | 6mm | 7mm |
| Ref. | AGM-203-1 | AGM-203-2 | AGM-203-3 | AGM-203-4 | AGM-203-5 | AGM-203-6 | AGM-203-7 |

Additional Info: Recommended torque - manual only light finger tight (5-10 Ncm) using hand driver 1.25 mm.
Material: Titanium

Wide Healing Cap Ø5.0mm



| | | | | | | | |
|-----------|------------|------------|------------|------------|------------|------------|------------|
| Height mm | 1mm | 2mm | 3mm | 4mm | 5mm | 6mm | 7mm |
| Ref. | AGM-203-1W | AGM-203-2W | AGM-203-3W | AGM-203-4W | AGM-203-5W | AGM-203-6W | AGM-203-7W |

Additional Info: Recommended torque - manual only light finger tight (5-10 Ncm) using hand driver 1.25 mm.
Material: Titanium

Closed Tray Impression Transfers

| | | | | | | |
|-------------|-----------------------|--|-------------------------------|--|-----------------------|--|
| Description | with click connection | | Concave with click connection | | with screw connection | |
| Height mm | 11mm | | 11mm | | 8mm | |
| Ref. | AGM-302 | | AGM-302-C | | AGM-305 | |
| Description | with plastic sleeve | | Plastic sleeve - 4pcs | | | |
| Height mm | 8.5mm | | 11mm | | | |
| Ref. | AGM-304 | | AGM-304-P | | | |

Additional Info: Recommended torque - manual only light finger tight (5-10 Ncm) using hand driver 1.25 mm.
Material: Stainless Steel

Open Tray Impression Transfers

| | | | | |
|-------------|--------------------|--|----------------------------|--|
| Description | Open tray transfer | | Concave open tray transfer | |
| Height mm | 14mm | | 14mm | |
| Ref. | AGM-301 | | AGM-301-C | |

Additional Info: Recommended torque - manual only light finger tight (5-10 Ncm) using hand driver 1.25 mm.
Material: Stainless Steel

Standard Platform Implant Analog

| | | |
|-------------|----------------|--|
| Description | Implant analog | |
| Height mm | 12mm | |
| Ref. | AGM-214 | |



Straight Abutments

| | | | | |
|-------------|------------|-----------|----------------|----------|
| Description | Short thin | Long thin | Short standard | Standard |
| Height mm | 7mm | 10mm | 7mm | 7mm |
| Ref. | AGM-104S | AGM-104 | AGM-101S | AGM-101 |

Additional Info: Recommended torque - 25 Ncm.

Material: Titanium

| | | | | |
|-------------|------------|---------|-----------|-----------|
| Description | Short wide | Wide | Long base | Long neck |
| Height mm | 7mm | 10mm | 13mm | 15mm |
| Ref. | AGM-110S | AGM-110 | AGM-108 | AGM-109 |

Additional Info: Recommended torque - 25 Ncm.

Material: Titanium

Shoulder Abutments

| | | | | |
|-------------|---------------|---------------|--------------|--------------|
| Description | Shoulder -1mm | Shoulder -2mm | Shoulder 3mm | Shoulder 4mm |
| Height mm | 10mm | 11mm | 12mm | 13mm |
| Ref. | AGM-602-1 | AGM-602-2 | AGM-602-3 | AGM-602-4 |

Additional Info: Recommended torque - 25 Ncm.

Material: Titanium

Concave Shoulder Abutments

| | | | | |
|-------------|---------------|---------------|---------------|---------------|
| Description | Shoulder -1mm | Shoulder -2mm | Shoulder -3mm | Shoulder -4mm |
| Height mm | 10mm | 11mm | 12mm | 13mm |
| Ref. | AGM-101-1C | AGM-101-2C | AGM-101-3C | AGM-101-4C |

Additional Info: Recommended torque - 25 Ncm.

Material: Titanium

Esthetic Abutments

| | | | |
|-------------|----------------|----------------|----------------|
| Description | Esthetic - 1mm | Esthetic - 2mm | Esthetic - 3mm |
| Height mm | 10mm | 11mm | 12mm |
| Ref. | AGM-802-1 | AGM-802-2 | AGM-802-3 |

Additional Info: Recommended torque - 25 Ncm.

Material: Titanium

15° Angulated Abutments

| | | | | |
|-------------|----------|-----------|--------------|----------|
| Description | 15° Thin | 15° Short | 15° Standard | 15° Long |
| Height mm | 9.5mm | 7mm | 9.5mm | 12mm |
| Ref. | AGM-102T | AGM-102S | AGM-102 | AGM-107 |

Additional Info: Recommended torque - 25 Ncm.

Material: Titanium



15° Angulated Esthetic Abutments

| | | | |
|-------------|--------------------|--------------------|--------------------|
| Description | 15° Esthetic - 1mm | 15° Esthetic - 2mm | 15° Esthetic - 3mm |
| Height mm | 10mm | 11mm | 12mm |
| Ref. | AGM-102-E1 | AGM-102-E2 | AGM-102-E3 |

Additional Info: Recommended torque - 25 Ncm.

Material: Titanium

15° Concave Angulated Esthetic Abutments

| | | | |
|-------------|-------------------|-------------------|-------------------|
| Description | 15° Concave - 1mm | 15° Concave - 2mm | 15° Concave - 3mm |
| Height mm | 10mm | 11mm | 12mm |
| Ref. | AGM-102-1C | AGM-102-2C | AGM-102-3C |

Additional Info: Recommended torque - 25 Ncm.

Material: Titanium

25° Angulated Abutments

| | | | |
|-------------|-----------|--------------|----------|
| Description | 25° Short | 25° Standard | 25° Long |
| Height mm | 7mm | 9.5mm | 12mm |
| Ref. | AGM-103S | AGM-103 | AGM-111 |

Additional Info: Recommended torque - 25 Ncm.

Material: Titanium

25° Angulated Esthetic Abutments

| | | | |
|-------------|--------------------|--------------------|--------------------|
| Description | 25° Esthetic - 1mm | 25° Esthetic - 2mm | 25° Esthetic - 3mm |
| Height mm | 10mm | 11mm | 12mm |
| Ref. | AGM-103-E1 | AGM-103-E2 | AGM-103-E3 |

Additional Info: Recommended torque - 25 Ncm.

Material: Titanium

25° Concave Angulated Esthetic Abutments

| | | | |
|-------------|-------------------|-------------------|-------------------|
| Description | 25° Concave - 1mm | 25° Concave - 2mm | 25° Concave - 3mm |
| Height mm | 10mm | 11mm | 12mm |
| Ref. | AGM-103-1C | AGM-103-2C | AGM-103-3C |

Additional Info: Recommended torque - 25 Ncm.

Material: Titanium

35° - 45° Angulated Abutments

| | | |
|-------------|---------|---------|
| Description | 35° | 45° |
| Height mm | 11mm | 11mm |
| Ref. | AGM-106 | AGM-145 |

Additional Info: Recommended torque - 25 Ncm.

Material: Titanium



UCLA Abutment for Casting

| | |
|-------------|-----------------------------------|
| Description | Castable hexed abutment CoCr base |
| Height mm | 16mm |
| Ref. | UCLA |



Direct Prosthetic Screw

| | |
|-------------|-------------------------|
| Description | Standard platform screw |
| Height mm | 7.7mm |
| Ref. | AGM-202 |

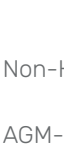


Additional Info: Recommended torque - 25 Ncm.

Material: CoCr / Plastic

Plastic Abutments for Casting Height 11mm

| | | | |
|-------------|------------------|------------|----------------|
| Description | Hex wide profile | Hex sleeve | Non-Hex sleeve |
| Ref. | AGM-P1 | AGM-P3 | AGM-P4 |



Additional Info: Recommended torque - 25 Ncm. - Supplied with prosthetic screw AGM-202

Material: Plastic

Temporary Abutments

| | | | | | |
|-------------|------------------|---------|---------|---------|---------|
| Description | Long screw -2pcs | Hex | Non-Hex | Hex | Non-Hex |
| Height mm | 15mm | 10mm | 10mm | 10mm | 10mm |
| Ref. | AGM-900 | AGM-901 | AGM-902 | AGM-903 | AGM-904 |



Additional Info: Recommended torque - 20 Ncm. - Supplied with prosthetic screw AGM-202

Material: Titanium / Peek

Single Unit Ø4.6mm

| | | | |
|-----------|------------|------------|------------|
| Height mm | 1mm | 2mm | 3mm |
| Ref. | AGM-207-1H | AGM-207-2H | AGM-207-3H |



Additional Info: Recommended torque - 25 Ncm. Anti rotation anatomic connector used for single unit screw retained restorations.

Material: Titanium

Single Unit Abutments

| | | | |
|-------------|--------------------|-----------|-------------|
| Description | Transfer open tray | Analog | Healing Cap |
| Height mm | 22mm | 9.5mm | 3mm |
| Ref. | AGM-301-H | AGM-214-H | AGM-509-H |

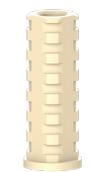


Additional Info: Recommended torque - manual only light finger tight (5-10 Ncm) using hand driver 1.25 mm.

Material: Stainless Steel / Titanium

Single Unit Abutments

| | | | |
|-------------|--------------|------------|------------|
| Description | Screw - 2pcs | Plastic | Temporary |
| Height mm | 4mm | 12mm | 12mm |
| Ref. | AGM-207-SCH | AGM-207-PH | AGM-207-PK |



Additional Info: Recommended torque - 20 Ncm. - Using hex driver 1.25 mm.

Material: Titanium / Plastic / Peek



Scan Post

| | | |
|-----------|--------|--------|
| Height mm | 7mm | 10mm |
| Material | PEEK | PEEK |
| Ref. | SBH-07 | SBH-10 |



Digital Analog

| |
|-----------------|
| 9mm |
| Stainless Steel |
| AD-SP |



Engaging Ti-Base

| | | | |
|-----------|----------|----------|----------|
| Height mm | 0.5mm | 1.5mm | 3.0mm |
| Material | Titanium | Titanium | Titanium |
| Ref. | TBH-05 | TBH-15 | TBH-30 |



Non-Engaging Ti-Base

| | | | |
|-----------|----------|----------|----------|
| Height mm | 0.5mm | 1.5mm | 3.0mm |
| Material | Titanium | Titanium | Titanium |
| Ref. | TBNH-05 | TBNH-15 | TBNH-30 |



Engaging Ti-Base Compatible Sirona

| | |
|-----------|----------|
| Height mm | 1.0mm |
| Material | Titanium |
| Ref. | TBS |



Suggested Workflow:

Scanning:

Scan intraorally or on your model with an Alfa Gate scan post.

Designing:

In the Alfa Gate implant library, select the implant scan post and Ti-Base height.

Design the implant's restoration.

Milling:

Send the design file to mill your restoration.

Cementation:

Cement the milled restoration on Ti-Base.

Scan Body Set

INTERNAL HEX PLATFORM- 1.1MM
-oPCS.



SBH-1.-K

ALL SCAN BODY SETS
INCLUDE:

HEX DRIVER
1,2oMM - (LONG)
AGM-400





MULTI-UNIT

Straight Multi-Unit Ø5.0mm

| | | | | | |
|-----------|-----------|-----------|-----------|-----------|-----------|
| Height mm | 1mm | 2mm | 3mm | 4mm | 5mm |
| Ref. | AGM-700-1 | AGM-700-2 | AGM-700-3 | AGM-700-4 | AGM-700-5 |

Additional Info: Recommended torque - 25 Ncm. - Using hex driver 1.25 mm.

Material: Titanium



17° Angulated Multi-Unit Ø5.0mm

| | | | |
|-----------|-----------|-----------|-----------|
| Height mm | 1mm | 2mm | 3mm |
| Ref. | AGM-717-1 | AGM-717-2 | AGM-717-3 |

Additional Info: Recommended torque - 25 Ncm. - Using hex driver 1.25 mm.

Material: Titanium



30° Angulated Multi-Unit Ø5.0mm

| | | | |
|-----------|-----------|-----------|-----------|
| Height mm | 1mm | 2mm | 3mm |
| Ref. | AGM-730-1 | AGM-730-2 | AGM-730-3 |

Additional Info: Recommended torque - 25 Ncm. - Using hex driver 1.25 mm.

Material: Titanium



45° Angulated Multi-Unit Ø5.0mm

| | |
|-----------|-----------|
| Height mm | 1mm |
| Ref. | AGM-745-1 |

Additional Info: Recommended torque - 25 Ncm. - Using hex driver 1.25 mm.

Material: Titanium



Multi-Unit Prosthetics

| | | | |
|-------------|--------------------|---------|-------------|
| Description | Transfer open tray | Analog | Healing Cap |
| Height mm | 22mm | 12mm | 5mm |
| Ref. | AGM-508 | AGM-507 | AGM-509 |

Additional Info: Recommended torque - 5 Ncm. - Using hex driver 1.25 mm.

Material: Stainless Steel / Titanium



Multi-Unit Prosthetics

| | | | | |
|-------------|-------------------------|--------------------|------------------|-------------------------|
| Description | Prosthetic screw - 2pcs | Temporary cylinder | Plastic cylinder | Temporary PEEK cylinder |
| Height mm | 4.5mm | 12mm | 12mm | 12mm |
| Ref. | AGM-506-SC | AGM-505 | AGM-506 | AGM-512 |

Additional Info: Recommended torque - manual only light finger tight (5-10 Ncm) using hand driver 1.25 mm.

Material: Titanium / Plastic / Peek



Multi-Unit CAD/CAM

Scan Post

| | |
|-----------|------|
| Height mm | 7mm |
| Material | PEEK |
| Ref. | SBMU |



Digital Analog

| | |
|-----------|-----------------|
| Height mm | 9mm |
| Material | Stainless Steel |
| Ref. | AD-MU |



Non-Engaging Ti-Base

| | |
|-----------|----------|
| Height mm | 0.3mm |
| Material | Titanium |
| Ref. | TBMU |



MULTI-UNIT SETS



Straight Multi-Unit

| | | | | | |
|-----------|-------------|-------------|-------------|-------------|-------------|
| Height mm | 1mm | 2mm | 3mm | 4mm | 5mm |
| Ref. | AGM-700-1-K | AGM-700-2-K | AGM-700-3-K | AGM-700-4-K | AGM-700-5-K |



17° Angulated Multi-Unit

| | | | |
|-----------|-------------|-------------|-------------|
| Height mm | 1mm | 2mm | 3mm |
| Ref. | AGM-717-1-K | AGM-717-2-K | AGM-717-3-K |



30° Angulated Multi-Unit

| | | | |
|-----------|-------------|-------------|-------------|
| Height mm | 1mm | 2mm | 3mm |
| Ref. | AGM-730-1-K | AGM-730-2-K | AGM-730-3-K |



45° Angulated Multi-Unit

| | |
|-----------|-------------|
| Height mm | 1mm |
| Ref. | AGM-745-1-K |



All Multi-Unit Sets include:

| | | | |
|-------------|----------|---------|-------------|
| Description | Transfer | Analog | Healing Cap |
| Ref. | AGM-508 | AGM-507 | AGM-509 |

| | | | |
|-------------|--------------|--------------------|------------------|
| Description | Screw - 2pcs | Temporary cylinder | Plastic cylinder |
| Ref. | AGM-506-SC | AGM-505 | AGM-506 |



Multi-Unit Scan body sets

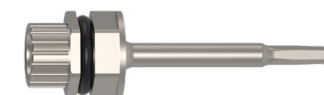
MULTI-UNIT PLATFORM-
1.1MM - 0PCS.

ALL SCAN BODY SETS
INCLUDE:



SBMU-K

HEX DRIVER
1,20MM - (LONG)
AGM-400





BALL ATTACHMENT

Standard Ball Attachment Ø4.2mm

| Height mm | 0.5mm | 1mm | 2mm | 3mm | 4mm | 5mm | 6mm | 7mm |
|-----------|-------------|-----------|-----------|-----------|-----------|-----------|-----------|-----------|
| Ref. | AGM-105-0.5 | AGM-105-1 | AGM-105-2 | AGM-105-3 | AGM-105-4 | AGM-105-5 | AGM-105-6 | AGM-105-7 |

Additional Info: Recommended torque - 25 Ncm. - Using hex driver 1.25 mm.

Material: Titanium



Concave Ball Attachment Ø4.2mm

| Height mm | 1mm | 2mm | 3mm | 4mm |
|-----------|------------|------------|------------|------------|
| Ref. | AGM-105-1C | AGM-105-2C | AGM-105-3C | AGM-105-4C |

Additional Info: Recommended torque - 25 Ncm. - Using hex driver 1.25 mm.

Material: Titanium



Angulated Multi Base Height 1.5mm

| Description | Multi base 17° | Multi base 30° |
|-------------|----------------|----------------|
| Ref. | AGM-501 | AGM-502 |

Additional Info: Recommended torque - 25 Ncm. - Using hex driver 1.25 mm.

Material: Titanium

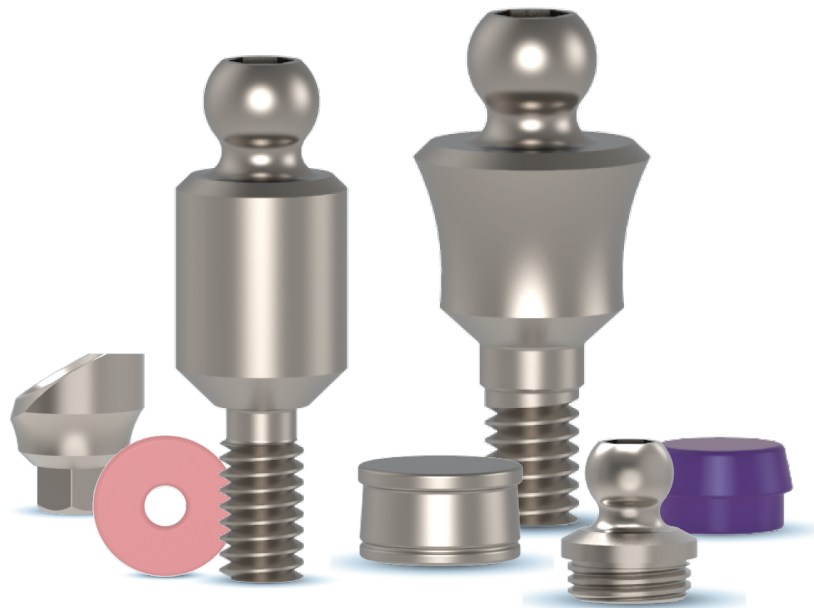


Ball Attachment for Multi Base

| Height mm | 1mm | 2mm | 3mm |
|-----------|-----------|-----------|-----------|
| Ref. | AGM-504-1 | AGM-504-2 | AGM-504-3 |

Additional Info: Recommended torque - 25 Ncm. - Using hex driver 1.25 mm.

Material: Titanium



BALL ATTACHMENT SETS

| Height mm | 1mm | 2mm | 3mm | 4mm | 5mm | 6mm | 7mm |
|-----------|------------|------------|------------|------------|------------|------------|------------|
| Ref. | AGM-105-1K | AGM-105-2K | AGM-105-3K | AGM-105-4K | AGM-105-5K | AGM-105-6K | AGM-105-7K |

All Ball Attachment Sets include:

| Description | Standard plastic cap | Soft plastic cap |
|------------------|----------------------|------------------|
| Ref. | AGM-105-P | AGM-105-PS |
| Hard plastic cap | Metal housing | Protective disk |
| AGM-105-PH | AGM-105-M | AGM-105-D |



Ball Attachment Replacement Set

Ref. AGM-105-1T

All Ball Attachment Sets include:

| Description | Standard plastic cap | Soft plastic cap |
|------------------|----------------------|------------------|
| Ref. | AGM-105-P | AGM-105-PS |
| Hard plastic cap | Metal housing | Protective disk |
| AGM-105-PH | AGM-105-M | AGM-105-D |





Alfa-Lock Attachment Ø4.5mm

| | | | | | |
|-----------|-----------|-----------|-----------|-----------|-----------|
| Height mm | 1mm | 2mm | 3mm | 4mm | 5mm |
| Ref. | AGM-106-1 | AGM-106-2 | AGM-106-3 | AGM-106-4 | AGM-106-5 |



Additional Info: Recommended torque - 25 Ncm. - Using hex driver 1.25 mm.

Material: Titanium

Plastic Cap for Alfa-Lock

| | | | |
|-------------|-----------|------------|------------|
| Description | Standard | Soft | Hard |
| Ref. | AGM-106-P | AGM-106-PS | AGM-106-PH |



Additional Info: Used for all types of Alfa-Lock

Material: Plastic

Metal Housing and Protective Disk

| | | |
|-------------|---------------|-----------------|
| Description | Metal housing | Protective disk |
| Height mm | 2.8mm | 0.5mm |
| Ref. | AGM-106-M | AGM-106-D |



Additional Info: Used for all types of Alfa Lock

Material: Stainless Steel / Plastic

Angulated Multi Base Height 1.5mm

| | | |
|-------------|----------------|----------------|
| Description | Multi base 17° | Multi base 30° |
| Ref. | AGM-501 | AGM-502 |



Additional Info: Recommended torque - 25 Ncm. - Using hex driver 1.25 mm.

Material: Titanium

Alfa-Lock for Multi Base Ø4.5mm

| | | | |
|-----------|-----------|-----------|-----------|
| Height mm | 1mm | 2mm | 3mm |
| Ref. | AGM-510-1 | AGM-510-2 | AGM-510-3 |



Additional Info: Recommended torque - 25 Ncm. - Using hex driver 1.25 mm.

Material: Titanium



Alfa-Lock Sets

| | | | | | |
|-----------|------------|------------|------------|------------|------------|
| Height mm | 1mm | 2mm | 3mm | 4mm | 5mm |
| Ref. | AGM-106-1K | AGM-106-2K | AGM-106-3K | AGM-106-4K | AGM-106-5K |

All Alfa-Lock Sets include:

| | | |
|------------------|----------------------|------------------|
| Description | Standard plastic cap | Soft plastic cap |
| Ref. | AGM-106-P | AGM-106-PS |
| Hard plastic cap | Metal housing | Protective disk |
| AGM-106-PH | AGM-106-M | AGM-106-D |



Alfa-Lock Replacement Set

Ref. AGM-106-1T

All Alfa-Lock Sets include:

| | | |
|------------------|----------------------|------------------|
| Description | Standard plastic cap | Soft plastic cap |
| Ref. | AGM-106-P | AGM-106-PS |
| Hard plastic cap | Metal housing | Protective disk |
| AGM-106-PH | AGM-106-M | AGM-106-D |



Alfa-Lock Multi Tool:

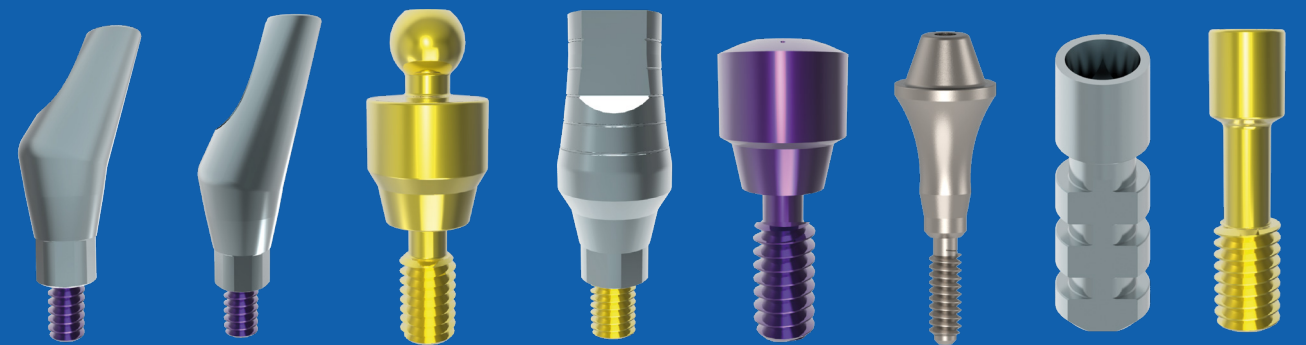
Ref. IT-AL

For Insertion/ Extraction Plastic caps.





CONICAL CONNECTION PROSTHETICS





Healing Cap Ø3.7mm - RP

| | | | | |
|-----------|----------|----------|----------|----------|
| Height mm | 2mm | 3mm | 4mm | 5mm |
| Ref. | HCC-2-RP | HCC-3-RP | HCC-4-RP | HCC-5-RP |



Additional Info: Recommended torque - manual only light finger tight (5-10 Ncm) using hand driver 1.25 mm.

Material: Titanium

Implant Transfer - RP

| | | |
|-------------|----------------------------|------------------------|
| Description | Open tray implant transfer | Click implant transfer |
| Height mm | 14mm | 11mm |
| Ref. | ITC-RP | ITK-RP |



Additional Info: Recommended torque - manual only light finger tight (5-10 Ncm) using hand driver 1.25 mm.

Material: Stainless Steel

Implant Analog - RP

| | |
|-----------|--------|
| Height mm | 13mm |
| Ref. | ANC-RP |



Material: Titanium

Direct Prosthetic Screw

| | |
|-----------|------------|
| Height mm | 7.7mm |
| Ref. | AGM-202-NP |



Additional Info: Recommended torque - 20 Ncm.

Material: Titanium

Temporary Abutment -RP

| | | |
|-------------|------------|------------|
| Description | Hex | Non-Hex |
| Height mm | 10mm | 10mm |
| Ref. | AGM-903-RP | AGM-904-RP |



Additional Info: Recommended torque - 15 Ncm. - Supplied with prosthetic screw

Material: PEEK

Plastic Abutments for Casting

| | | |
|-------------|-----------|-----------|
| Description | Hex | Non-Hex |
| Height mm | 10mm | 10mm |
| Ref. | AGM-P3-RP | AGM-P4-RP |



Additional Info: Recommended torque - 20 Ncm. - Supplied with prosthetic screw .

Material: Plastic

Straight Abutments - RP

| | | |
|-----------|-----------|------------|
| Height mm | 9mm | 13mm |
| Ref. | SSAC-9-RP | SSAC-13-RP |



Additional Info: Recommended torque - 25 Ncm.

Material: Titanium

Anatomic Straight Abutments - RP

| | | | | |
|-----------|-----------|-----------|-----------|-----------|
| Height mm | 1mm | 2mm | 3mm | 4mm |
| Ref. | ASAC-1-RP | ASAC-2-RP | ASAC-3-RP | ASAC-4-RP |



Additional Info: Recommended torque - 25 Ncm.

Material: Titanium



15° Angulated Abutments - RP

| | | |
|-----------|------------|-------------|
| Height mm | 9mm | 12mm |
| Ref. | AAC-159-RP | AAC-1512-RP |

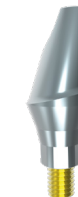


Additional Info: Recommended torque - 25 Ncm.

Material: Titanium

15° Anatomic Angulated Abutments - RP

| | | | |
|-----------|-----------|-----------|-----------|
| Height mm | 1mm | 2mm | 3mm |
| Ref. | AAA151-RP | AAA152-RP | AAA153-RP |



Additional Info: Recommended torque - 25 Ncm.

Material: Titanium

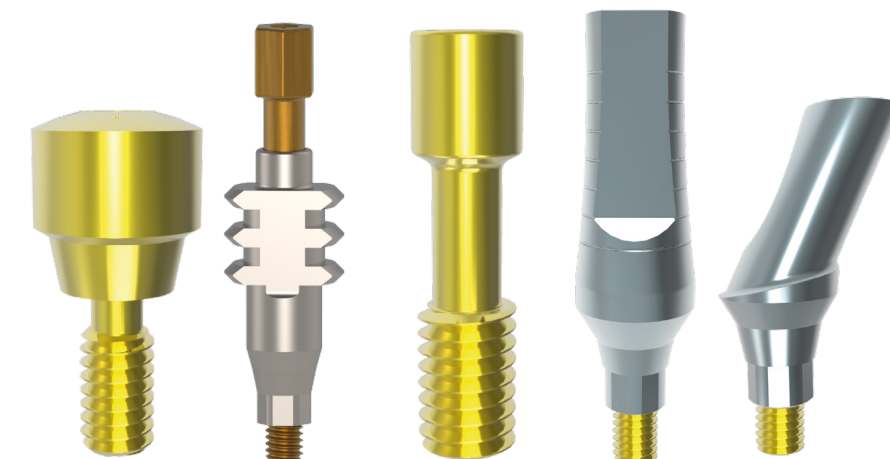
25° Anatomic Angulated Abutments - RP

| | | | |
|-----------|-----------|-----------|-----------|
| Height mm | 1mm | 2mm | 3mm |
| Ref. | AAA251-RP | AAA252-RP | AAA253-RP |



Additional Info: Recommended torque - 25 Ncm.

Material: Titanium





MULTI-UNIT

Straight Multi-Unit -RP

| | | | | | |
|-----------|--------------|--------------|--------------|--------------|--------------|
| Height mm | 1mm | 2mm | 3mm | 4mm | 5mm |
| Ref. | AGM-700-1-RP | AGM-700-2-RP | AGM-700-3-RP | AGM-700-4-RP | AGM-700-5-RP |

Additional Info: Recommended torque - 25 Ncm.- Using hex driver 1.25 mm.

Material: Titanium



17° Angulated Multi-Unit - RP

| | |
|-----------|--------------|
| Height mm | 1.5mm |
| Ref. | AGM-717-1-RP |

Additional Info: Recommended torque - 25 Ncm.

Material: Titanium



30° Angulated Multi-Unit - RP

| | |
|-----------|--------------|
| Height mm | 1.5mm |
| Ref. | AGM-730-1-RP |

Additional Info: Recommended torque - 25 Ncm.

Material: Titanium



Multi-Unit Prosthetics

| | | | |
|-------------|--------------------|---------|-------------|
| Description | Transfer open tray | Analog | Healing Cap |
| Height mm | 22mm | 12mm | 5mm |
| Ref. | AGM-508 | AGM-507 | AGM-509 |

Additional Info: Recommended torque - 25 Ncm.

Material: Stainless Steel / Titanium



| | | | | |
|-------------|-------------------------|--------------------|------------------|-------------------------|
| Description | Prosthetic screw - 2pcs | Temporary cylinder | Plastic cylinder | Temporary PEEK cylinder |
| Height mm | 4.5mm | 12mm | 12mm | 12mm |
| Ref. | AGM-506-SC | AGM-505 | AGM-506 | AGM-512 |

Additional Info: Recommended torque - 25 Ncm.

Material: Titanium / Plastic / Peek



All Multi-Unit Sets include:

| | | | |
|-------------|--------------|--------------------|------------------|
| Description | Transfer | Analog | Healing Cap |
| Ref. | AGM-508 | AGM-507 | AGM-509 |
| Description | Screw - 2pcs | Temporary cylinder | Plastic cylinder |
| Ref. | AGM-506-SC | AGM-505 | AGM-506 |

Additional Info: Recommended torque - 25 Ncm.

Material: Stainless Steel.



CAD/CAM Prosthetics

Digital Analog

| |
|-----------------|
| 10mm |
| Stainless Steel |
| AD-MU |



Non-Engaging Ti-Base

| |
|----------|
| 0.3mm |
| Titanium |
| TBMU |



Multi-Unit Sets

| | | | | | |
|-------------|---------------------|---------------|---------------|---------------|---------------|
| Description | Straight Multi-Unit | | | | |
| Height mm | 1mm | 2mm | 3mm | 4mm | 5mm |
| Ref. | AGM-700-1-RPK | AGM-700-2-RPK | AGM-700-3-RPK | AGM-700-4-RPK | AGM-700-5-RPK |

| | | |
|-------------|--------------------------|--------------------------|
| Description | 17° Angulated Multi-Unit | 30° Angulated Multi-Unit |
| Height mm | 1.5mm | 1.5mm |
| Ref. | AGM-717-1-RPK | AGM-730-1-RPK |



CAD/CAM

Scan Post

| | |
|-----------|---------|
| Height mm | 10mm |
| Material | PEEK |
| Ref. | SBRP-10 |



Digital Analog

| | |
|-----------|-----------------|
| Height mm | 9mm |
| Material | Stainless Steel |
| Ref. | AD-RP |



Engaging Ti-Base

| | |
|-----------|----------|
| Height mm | 0.5mm |
| Material | Titanium |
| Ref. | TBRP-05 |



| |
|----------|
| 1.5mm |
| Titanium |
| TBRP-15 |



| |
|----------|
| 3.0mm |
| Titanium |
| TBRP-30 |



Non-Engaging Ti-Base

| | |
|-----------|------------|
| Height mm | 0.5mm |
| Material | Titanium |
| Ref. | TBRP-NH-05 |



| |
|------------|
| 1.5mm |
| Titanium |
| TBRP-NH-15 |



| |
|------------|
| 3.0mm |
| Titanium |
| TBRP-NH-30 |



Additional Info: Recommended torque - 25 Ncm.

Material: Titanium

Suggested Workflow:

Scanning:

Scan intraorally or on your model with an Alfa Gate scan post.

Designing:

In the Alfa Gate implant library, select the implant scan post and Ti-Base height.

Design the implant's restoration.

Milling:

Send the design file to mill your restoration.

Cementation:

Cement the milled restoration on Ti-Base.

Scan Body Set

RP CONICAL PLATFORM - 1.1MM-0PCS.



RP SBRP-1.-K

ALL SCAN BODY SETS
INCLUDE:

HEX DRIVER
1,20MM - (LONG)
AGM-400





BALL ATTACHMENT



Ball Attachment

| | | | | | |
|-----------|----------|----------|----------|----------|----------|
| Height mm | 1mm | 2mm | 3mm | 4mm | 5mm |
| Ref. | BAC-1-RP | BAC-2-RP | BAC-3-RP | BAC-4-RP | BAC-5-RP |



Additional Info: Recommended torque - 20 Ncm. - Using hex driver 1.25 mm.
Material: Titanium

Ball Attachment Prosthetics

| | | |
|--|---|--|
| Description | Standard plastic cap | Soft plastic cap |
| Ref. | AGM-105-P  | AGM-105-PS  |
| Hard plastic cap | Metal housing | Protective disk |
| AGM-105-PH  | AGM-105-M  | AGM-105-D  |

Ball Attachment sets

| | | | | | |
|-----------|-----------|-----------|-----------|-----------|-----------|
| Height mm | 1mm | 2mm | 3mm | 4mm | 5mm |
| Ref. | BAC-1-RPK | BAC-2-RPK | BAC-3-RPK | BAC-4-RPK | BAC-5-RPK |



All Ball Attachment Sets include:

| | | | | | |
|-------------|----------------------|------------------|------------------|---------------|-----------------|
| Description | Standard plastic cap | Soft plastic cap | Hard plastic cap | Metal housing | Protective disk |
| Ref. | AGM-105-P | AGM-105-PS | AGM-105-PH | AGM-105-M | AGM-105-D |



ALFA-LOCK





Alfa-Lock Attachment

| | | | | | |
|-----------|-------------|-------------|-------------|-------------|-------------|
| Height mm | 1mm | 2mm | 3mm | 4mm | 5mm |
| Ref. | AGM-106-1RP | AGM-106-2RP | AGM-106-3RP | AGM-106-4RP | AGM-106-5RP |



Additional Info: Recommended torque - 20 Ncm. - Using hex driver 1.25 mm.
Material: Titanium

All Alfa-Lock Prosthetics

| | | |
|--|---|--|
| Description | Standard plastic cap | Soft plastic cap |
| Ref. | AGM-106-P  | AGM-106-PS  |
| Hard plastic cap | Metal housing | Protective disk |
| AGM-106-PH  | AGM-106-M  | AGM-106-D  |

**Alfa-Lock can be sold separately.*

Alfa-Lock sets

| | | | | | |
|-----------|--------------|--------------|--------------|--------------|--------------|
| Height mm | 1mm | 2mm | 3mm | 4mm | 5mm |
| Ref. | AGM-106-1RPK | AGM-106-2RPK | AGM-106-3RPK | AGM-106-4RPK | AGM-106-5RPK |



All Alfa-Lock Sets include:

| | | | | | |
|-------------|----------------------|------------------|------------------|---------------|-----------------|
| Description | Standard plastic cap | Soft plastic cap | Hard plastic cap | Metal housing | Protective disk |
| Ref. | AGM-106-P | AGM-106-PS | AGM-106-PH | AGM-106-M | AGM-106-D |



Healing Cap Ø3.7mm - NP

| | | | | |
|-----------|----------|----------|----------|----------|
| Height mm | 2mm | 3mm | 4mm | 5mm |
| Ref. | HCC-2-NP | HCC-3-NP | HCC-4-NP | HCC-5-NP |



Additional Info: Recommended torque - manual only light finger tight (5-10 Ncm) using hand driver 1.25 mm.

Material: Titanium

Implant Transfer - NP

| | | |
|-------------|-------------------------------|------------------------|
| Description | for open tray impres- sion | Click implant transfer |
| Height mm | 14mm | 11mm |
| Ref. | ITC-NP | ITK-NP |



Additional Info: Recommended torque - manual only light finger tight (5-10 Ncm) using hand driver 1.25 mm.

Material: Stainless Steel

Implant Analog - NP

| | |
|-----------|--------|
| Height mm | 13mm |
| Ref. | ANC-NP |



Material: Titanium

Direct Prosthetic Screw

| | |
|-----------|------------|
| Height mm | 7.7mm |
| Ref. | AGM-202-NP |



Additional Info: Recommended torque - 20 Ncm.

Material: Titanium

Temporary Abutment -NP

| | | |
|-------------|------------|------------|
| Description | Hex | Non-Hex |
| Height mm | 10mm | 10mm |
| Ref. | AGM-903-NP | AGM-904-NP |



Additional Info: Recommended torque - 15 Ncm. - Supplied with prosthetic screw

Material: PEEK

Plastic Abutments for Casting

| | | |
|-------------|-----------|-----------|
| Description | Hex | Non-Hex |
| Ref. | AGM-P3-NP | AGM-P4-NP |



Additional Info: Recommended torque - 20 Ncm. - Supplied with prosthetic screw .

Material: Plastic

Straight Abutments - NP

| | | |
|-----------|-----------|------------|
| Height mm | 9mm | 13mm |
| Ref. | SSAC-9-NP | SSAC-13-NP |



Additional Info: Recommended torque - 25 Ncm.

Material: Titanium

Anatomic Straight Abutments - NP

| | | | | |
|-----------|-----------|-----------|-----------|-----------|
| Height mm | 1mm | 2mm | 3mm | 4mm |
| Ref. | ASAC-1-NP | ASAC-2-NP | ASAC-3-NP | ASAC-4-NP |



Additional Info: Recommended torque - 25 Ncm.

Material: Titanium



15° Angulated Abutments - NP

| | | |
|-----------|------------|-------------|
| Height mm | 9mm | 12mm |
| Ref. | AAC-159-NP | AAC-1512-NP |



Additional Info: Recommended torque - 25 Ncm.

Material: Titanium

15° Anatomic Angulated Abutments - NP

| | | | |
|-----------|-----------|-----------|-----------|
| Height mm | 1mm | 2mm | 3mm |
| Ref. | AAA151-NP | AAA152-NP | AAA153-NP |

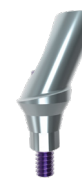


Additional Info: Recommended torque - 25 Ncm.

Material: Titanium

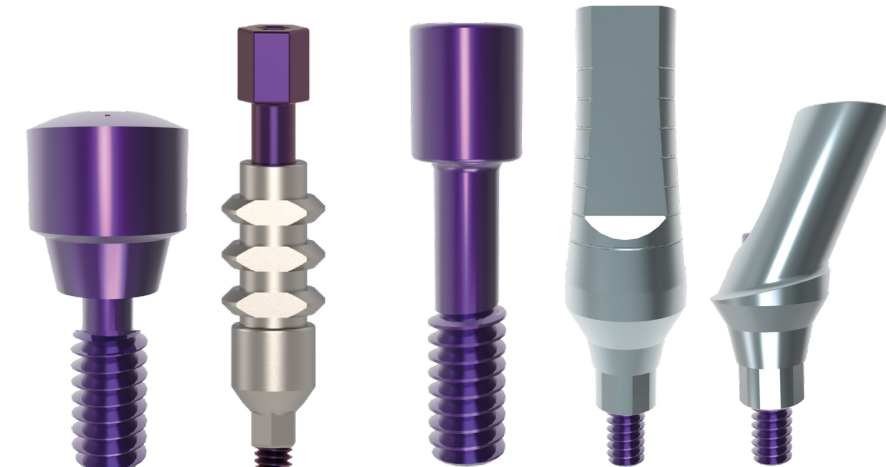
25° Anatomic Angulated Abutments - NP

| | | | |
|-----------|-----------|-----------|-----------|
| Height mm | 1mm | 2mm | 3mm |
| Ref. | AAA251-NP | AAA252-NP | AAA253-NP |



Additional Info: Recommended torque - 25 Ncm.

Material: Titanium





Scan Post

| | |
|-----------|---------|
| Height mm | 10mm |
| Material | PEEK |
| Ref. | SBNP-10 |



Digital Analog

| | |
|-----------|-----------------|
| Height mm | 9mm |
| Material | Stainless Steel |
| Ref. | AD-NP |



Engaging Ti-Base

| | |
|-----------|----------|
| Height mm | 0.5mm |
| Material | Titanium |
| Ref. | TBNP-05 |



| |
|----------|
| 1.5mm |
| Titanium |
| TBNP-15 |



| |
|----------|
| 3.0mm |
| Titanium |
| TBNP-30 |



Non-Engaging Ti-Base

| | |
|-----------|------------|
| Height mm | 0.5mm |
| Material | Titanium |
| Ref. | TBNP-NH-05 |



| |
|------------|
| 1.5mm |
| Titanium |
| TBNP-NH-15 |



| |
|------------|
| 3.0mm |
| Titanium |
| TBNP-NH-30 |



Additional Info: Recommended torque - 25 Ncm.

Material: Titanium

Suggested Workflow:

Scanning:

Scan intraorally or on your model with an Alfa Gate scan post.

Designing:

In the Alfa Gate implant library, select the implant scan post and Ti-Base height.

Design the implant's restoration.

Milling:

Send the design file to mill your restoration.

Cementation:

Cement the milled restoration on Ti-Base.

Scan Body Set

NP Conical Platform-10mm5-Pcs.



NP SBNP-10-K

All Scan Body Sets include:

Hex driver
1.25mm - (Long)
AGM-400



Ball Attachment Ø3.7mm

| | | | | | |
|-----------|----------|----------|----------|----------|----------|
| Height mm | 1mm | 2mm | 3mm | 4mm | 5mm |
| Ref. | BAC-1-NP | BAC-2-NP | BAC-3-NP | BAC-4-NP | BAC-5-NP |



Additional Info: Recommended torque - 20 Ncm. - Using hex driver 1.25 mm.

Material: Titanium

Ball Attachment Prosthetics

| | | |
|-------------|----------------------|------------------|
| Description | Standard plastic cap | Soft plastic cap |
| Ref. | AGM-105-P | AGM-105-PS |



| | | |
|------------------|---------------|-----------------|
| Hard plastic cap | Metal housing | Protective disk |
| AGM-105-PH | AGM-105-M | AGM-105-D |



Ball Attachment sets

| | | | | | |
|-----------|-----------|-----------|-----------|-----------|-----------|
| Height mm | 1mm | 2mm | 3mm | 4mm | 5mm |
| Ref. | BAC-1-NPK | BAC-2-NPK | BAC-3-NPK | BAC-4-NPK | BAC-5-NPK |



All Ball Attachment Sets include:

| | | | | | |
|-------------|----------------------|------------------|------------------|---------------|-----------------|
| Description | Standard plastic cap | Soft plastic cap | Hard plastic cap | Metal housing | Protective disk |
| Ref. | AGM-105-P | AGM-105-PS | AGM-105-PH | AGM-105-M | AGM-105-D |



Alfa-Lock Attachment

| | | | | | |
|-----------|-------------|-------------|-------------|-------------|-------------|
| Height mm | 1mm | 2mm | 3mm | 4mm | 5mm |
| Ref. | AGM-106-1NP | AGM-106-2NP | AGM-106-3NP | AGM-106-4NP | AGM-106-5NP |

Additional Info: Recommended torque - 20 Ncm. - Using hex driver 1.25 mm.

Material: Titanium



All Alfa-Lock Prosthetics

| | | |
|------------------|----------------------|------------------|
| Description | Standard plastic cap | Soft plastic cap |
| Ref. | AGM-106-P | AGM-106-PS |
| Hard plastic cap | Metal housing | Protective disk |
| AGM-106-PH | AGM-106-M | AGM-106-D |

**Alfa-Lock can be sold separately.*

Alfa-Lock sets

| | | | | | |
|-----------|--------------|--------------|--------------|--------------|--------------|
| Height mm | 1mm | 2mm | 3mm | 4mm | 5mm |
| Ref. | AGM-106-1NPK | AGM-106-2NPK | AGM-106-3NPK | AGM-106-4NPK | AGM-106-5NPK |



All Alfa-Lock Sets include:

| | | | | | |
|-------------|----------------------|------------------|------------------|---------------|-----------------|
| Description | Standard plastic cap | Soft plastic cap | Hard plastic cap | Metal housing | Protective disk |
| Ref. | AGM-106-P | AGM-106-PS | AGM-106-PH | AGM-106-M | AGM-106-D |



Healing Cap Ø4.5mm

| | | | | | |
|-----------|--------------|--------------|--------------|--------------|--------------|
| Height mm | 3mm | 4mm | 5mm | 6mm | 7mm |
| Ref. | AGM-203-3-RC | AGM-203-4-RC | AGM-203-5-RC | AGM-203-6-RC | AGM-203-7-RC |

Additional Info: Recommended torque - manual only light finger tight (5-10 Ncm) using hand driver 1.25 mm.

Material: Titanium

Wide Healing Cap Ø4.5mm

| | | | | | |
|-----------|---------------|---------------|---------------|---------------|---------------|
| Height mm | 3mm | 4mm | 5mm | 6mm | 7mm |
| Ref. | AGM-203-3W-RC | AGM-203-4W-RC | AGM-203-5W-RC | AGM-203-6W-RC | AGM-203-7W-RC |

Additional Info: Recommended torque - manual only light finger tight (5-10 Ncm) using hand driver 1.25 mm.

Material: Titanium

Implant Transfer

| | | |
|-------------|------------|------------|
| Description | open tray | Close Tray |
| Ref. | AGM-301-RC | AGM-305-RC |

Additional Info: Recommended torque - manual only light finger tight (5-10 Ncm) using hand driver 1.25 mm.

Material: Stainless Steel

Implant Analog

| | |
|-----------|------------|
| Height mm | 13mm |
| Ref. | AGM-214-RC |

Material: Stainless Steel

Direct Prosthetic Screw

| | |
|-----------|------------|
| Height mm | 13mm |
| Ref. | AGM-202-RC |

Additional Info: Recommended torque - 25 Ncm.

Material: Titanium

Temporary Abutment -NP

| | | |
|-------------|------------|------------|
| Description | Hex | Non-Hex |
| Height mm | 10mm | 10mm |
| Ref. | AGM-903-RC | AGM-904-RC |

Additional Info: Recommended torque - 20 Ncm.

Material: PEEK



Anatomic Straight Abutments

| | | | | |
|-----------|-------------|-------------|-------------|-------------|
| Height mm | 1mm | 2mm | 3mm | 4mm |
| Ref. | AGM-101-1RC | AGM-101-2RC | AGM-101-3RC | AGM-101-4RC |

Additional Info: Recommended torque - 25 Ncm.

Material: Titanium

15° Anatomic Angulated Abutments

| | | | |
|-----------|-------------|-------------|-------------|
| Height mm | 1mm | 2mm | 3mm |
| Ref. | AGM-102-1RC | AGM-102-2RC | AGM-102-3RC |

Additional Info: Recommended torque - 25 Ncm.

Material: Titanium

25° Anatomic Angulated Abutments

| | | | |
|-----------|---------------|---------------|---------------|
| Height mm | 1mm | 2mm | 3mm |
| Ref. | AGM-103-E1-RC | AGM-103-E2-RC | AGM-103-E3-RC |

Additional Info: Recommended torque - 25 Ncm.

Material: Titanium





MULTI-UNIT

Straight Multi-Unit

| | | | | | |
|-----------|--------------|--------------|--------------|--------------|--------------|
| Height mm | 1mm | 2mm | 3mm | 4mm | 5mm |
| Ref. | AGM-700-1-RC | AGM-700-2-RC | AGM-700-3-RC | AGM-700-4-RC | AGM-700-5-RC |

Additional Info: Recommended torque - 25 Ncm.

Material: Titanium

17° Angulated Multi-Unit

| | | |
|-----------|--------------|--------------|
| Height mm | 1mm | 3mm |
| Ref. | AGM-717-1-RC | AGM-717-3-RC |

Additional Info: Recommended torque - 25 Ncm.

Material: Titanium

30° Angulated Multi-Unit

| | | |
|-----------|--------------|--------------|
| Height mm | 1mm | 3mm |
| Ref. | AGM-730-1-RC | AGM-730-3-RC |

Additional Info: Recommended torque - 25 Ncm.

Material: Titanium

Multi-Unit Prosthetics

| | | | |
|-------------|--------------------|---------|-------------|
| Description | Transfer open tray | Analog | Healing Cap |
| Height mm | 22mm | 12mm | 5mm |
| Ref. | AGM-508 | AGM-507 | AGM-509 |

Additional Info: Recommended torque - 25 Ncm.

Material: Stainless Steel / Titanium

| | | | | |
|-------------|-------------------------|--------------------|------------------|-------------------------|
| Description | Prosthetic screw - 2pcs | Temporary cylinder | Plastic cylinder | Temporary PEEK cylinder |
| Height mm | 4.5mm | 12mm | 12mm | 12mm |
| Ref. | AGM-506-SC | AGM-505 | AGM-506 | AGM-512 |

Additional Info: Recommended torque - 25 Ncm.

Material: Titanium / Plastic / Peek

CAD/CAM Prosthetics

Scan Post

| | |
|-----------|------|
| Height mm | 7mm |
| Material | PEEK |
| Ref. | SBMU |

Digital Analog

| | |
|-----------|-----------------|
| Height mm | 10mm |
| Material | Stainless Steel |
| Ref. | AD-MU |

Non-Engaging Ti-Base

| | |
|-----------|----------|
| Height mm | 0.3mm |
| Material | Titanium |
| Ref. | TBMU |

Additional Info: Recommended torque - 25 Ncm.

Material: Stainless Steel / Peek



MULTI-UNIT SETS

Straight Multi-Unit Set

| | | | | | |
|-----------|---------------|---------------|---------------|---------------|---------------|
| Height mm | 1mm | 2mm | 3mm | 4mm | 5mm |
| Ref. | AGM-700-1-RCK | AGM-700-2-RCK | AGM-700-3-RCK | AGM-700-4-RCK | AGM-700-5-RCK |

Additional Info: Recommended torque - 25 Ncm. - Using hex driver 1.25 mm.

Material: Titanium



17° Angulated Multi-Unit Set

| | | |
|-----------|--------------|--------------|
| Height mm | 1mm | 3mm |
| Ref. | AGM-717-1-RC | AGM-717-3-RC |

Additional Info: Recommended torque - 25 Ncm.

Material: Titanium



30° Angulated Multi-Unit Set

| | | |
|-----------|--------------|--------------|
| Height mm | 1mm | 3mm |
| Ref. | AGM-730-1-RC | AGM-730-3-RC |

Additional Info: Recommended torque - 25 Ncm.

Material: Titanium



Multi-Unit Sets

| | | | | | |
|-------------|-------------------------|---------------|---------------|---------------|---------------|
| Description | Straight Multi-Unit Set | | | | |
| Height mm | 1mm | 2mm | 3mm | 4mm | 5mm |
| Ref. | AGM-700-1-RCK | AGM-700-2-RCK | AGM-700-3-RCK | AGM-700-4-RCK | AGM-700-5-RCK |

| | | | | |
|-------------|--------------------------|---------------|--------------------------|---------------|
| Description | 17° Angulated Multi-Unit | | 30° Angulated Multi-Unit | |
| Height mm | 1mm | 3mm | 1mm | 3mm |
| Ref. | AGM-717-1-RCK | AGM-717-3-RCK | AGM-730-1-RCK | AGM-730-3-RCK |



All Multi-Unit Sets include:

| | | | |
|-------------|----------|---------|-------------|
| Description | Transfer | Analog | Healing Cap |
| Ref. | AGM-508 | AGM-507 | AGM-509 |

| | | | |
|-------------|--------------|--------------------|------------------|
| Description | Screw - 2pcs | Temporary cylinder | Plastic cylinder |
| Ref. | AGM-506-SC | AGM-505 | AGM-506 |

Additional Info: Recommended torque - 25 Ncm.

Material: Stainless Steel.



Scan Post

| | |
|-----------|---------|
| Height mm | 10mm |
| Material | PEEK |
| Ref. | SBRC-10 |



Digital Analog

| |
|-----------------|
| 9mm |
| Stainless Steel |
| AD-RC |



Engaging Ti-Base

| | |
|-----------|-----------|
| Height mm | 0.5mm |
| Material | Titanium |
| Ref. | TBH-05-RC |



| |
|-----------|
| 1.5mm |
| Titanium |
| TBH-15-RC |



| |
|-----------|
| 3.0mm |
| Titanium |
| TBH-30-RC |



Additional Info: Recommended torque - 25 Ncm.

Material: Titanium

Non-Engaging Ti-Base

| | |
|-----------|------------|
| Height mm | 0.5mm |
| Material | Titanium |
| Ref. | TBNH-05-RC |



| |
|------------|
| 1.5mm |
| Titanium |
| TBNH-15-RC |



| |
|------------|
| 3.0mm |
| Titanium |
| TBNH-30-RC |



Additional Info: Recommended torque - 25 Ncm.

Material: Titanium

Suggested Workflow:

Scanning:

Scan intraorally or on your model with an Alfa Gate scan post.

Designing:

In the Alfa Gate implant library, select the implant scan post and Ti-Base height.
Design the implant's restoration.

Milling:

Send the design file to mill your restoration.

Cementation:

Cement the milled restoration on Ti-Base.



Alfa-Lock Attachment

| | | | | | |
|-----------|-------------|-------------|-------------|-------------|-------------|
| Height mm | 1mm | 2mm | 3mm | 4mm | 5mm |
| Ref. | AGM-106-1RC | AGM-106-2RC | AGM-106-3RC | AGM-106-4RC | AGM-106-5RC |

Additional Info: Recommended torque - 20 Ncm. - Using hex driver 1.25 mm.

Material: Titanium



All Alfa-Lock Prosthetics

| | | |
|------------------|----------------------|------------------|
| Description | Standard plastic cap | Soft plastic cap |
| Ref. | AGM-106-P | AGM-106-PS |
| Hard plastic cap | Metal housing | Protective disk |
| AGM-106-PH | AGM-106-M | AGM-106-D |

**Alfa-Lock can be sold separately.*

Alfa-Lock set For RC Connection

| | | | | | |
|-----------|--------------|--------------|--------------|--------------|--------------|
| Height mm | 1mm | 2mm | 3mm | 4mm | 5mm |
| Ref. | AGM-106-1RCK | AGM-106-2RCK | AGM-106-3RCK | AGM-106-4RCK | AGM-106-5RCK |

Alfa-Lock Replacement Set

Ref. AGM-106-1T

All Alfa-Lock Sets include:

| | | |
|------------------|----------------------|------------------|
| Description | Standard plastic cap | Soft plastic cap |
| Ref. | AGM-106-P | AGM-106-PS |
| Hard plastic cap | Metal housing | Protective disk |
| AGM-106-PH | AGM-106-M | AGM-106-D |

Alfa-Lock Multi Tool:

Ref. IT-AL

For Insertion/ Extraction Plastic caps.



All Alfa-Lock Sets include:

| | | | | | |
|-------------|----------------------|------------------|------------------|---------------|-----------------|
| Description | Standard plastic cap | Soft plastic cap | Hard plastic cap | Metal housing | Protective disk |
| Ref. | AGM-106-P | AGM-106-PS | AGM-106-PH | AGM-106-M | AGM-106-D |

SURGICAL KITS & INSTRUMENTS

| | |
|---------------------|-------|
| Kits | 76-83 |
| Instruments & Tools | 84-86 |
| Surgical Drills | 87 |
| Alfa Bone | 88 |
| Alfa Motor | 89 |
| Alfa Guide | 90-93 |



SURGICAL KITS

Advanced Kit

The Alfa Gate **Advanced Kit**, a comprehensive system of high-performance instruments designed for seamless compatibility across all our implant platforms. This versatile kit features precision-engineered stopper sleeves that integrate with surgical drills to provide absolute depth control, ensuring superior accuracy, safety, and consistent implant placement in every clinical scenario.

Kit includes:



Implant site depth probe

DPT

Implant Insertion Tools:



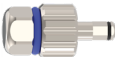
Handpiece 2.5mm (Long)

HAL



Handpiece 2.5mm (Short)

HAS



Hand/Ratchet

ITUS



2.5mm (Long)

IT2.5



2.5mm (Short)

ITS2.5



S-line 2.0mm (Long)

IT2



S-line 2.0mm (Short)

ITS2



RC 2.0mm (Long)

IT-RC



RC 2.0mm (Short)

ITS-RC



One-Piece (Long)

ITSL



One-Piece (Short)

ITSLS



NP (Long)

IT-NP



NP (Short)

ITS-NP



RP (Long)

IT-RP



RP (Short)

ITS-RP

Drill stoppers:



Torque wrench

TW

Tools:



Drill extender

DE



Parallel pin x4

PP

Prosthetic Drivers Hex:



Long

AGM-400



Short

AGM-400-S



Hand

AGM-400-R



Handpiece

HB

Drills:



DM



DB2.0



DB2.0-2.8



DB2.8-3.2



DB3.2-3.65



DB3.65-4.2



DB4.2-4.6



DB4.6-5.2



Advanced Kit

Ref. SKTEX

Premium Kit

The Alfa Gate **Premium Kit** is an elite instrumentation system built to handle even the most complex clinical cases with ease. The kit features 25 precision-engineered, built-in stopper drills that provide simple and absolute depth control throughout the drilling process. For enhanced procedural flexibility, it also includes a complete range of standard drills to ensure a seamless workflow for all hands-free surgical applications.

Kit includes:

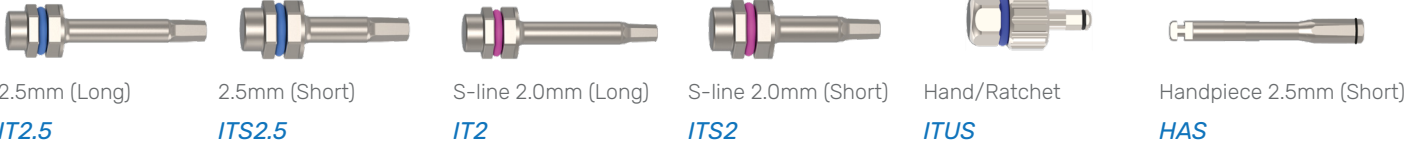
Tools:



Prosthetic Drivers Hex 1.25mm:



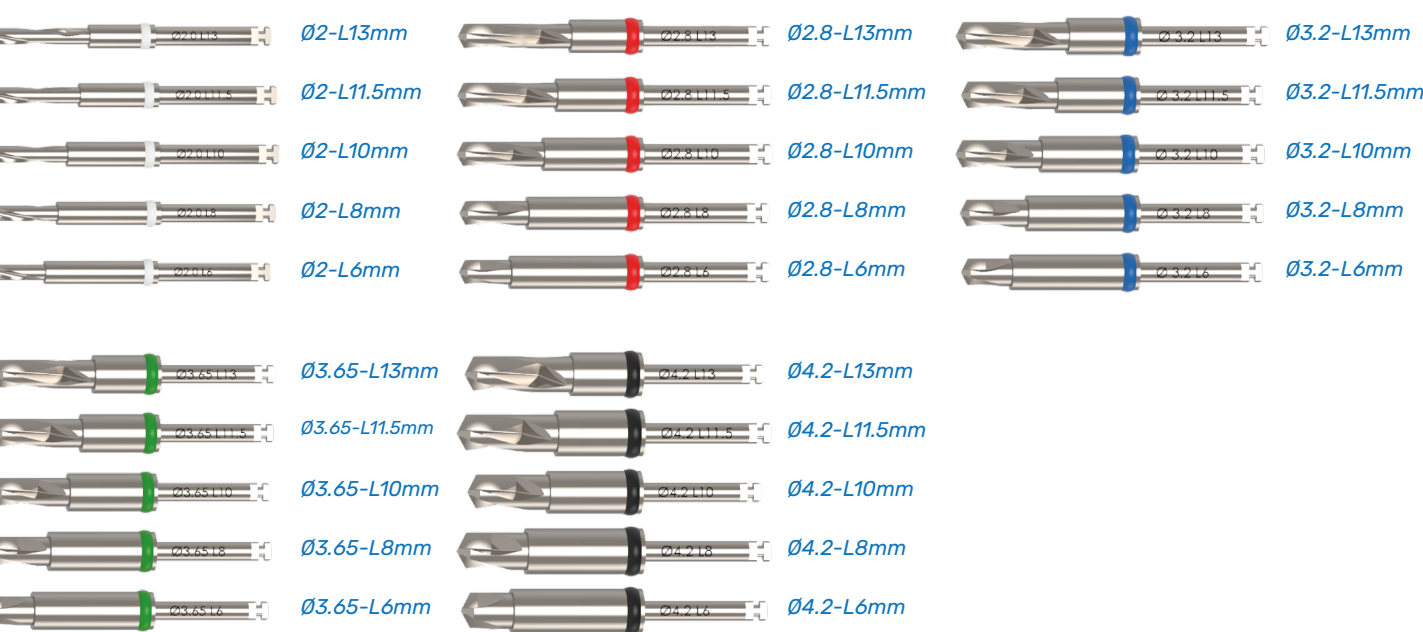
Implant Insertion Tools:



Drills:



Stopper Drills:



Premium Kit

Ref. **SPKTM**

Prime Kit

The Alfa Gate **Prime Kit** is one of our most impressive and compact surgical solutions, meticulously designed to include all the essential instruments a surgeon needs for optimal clinical results. This streamlined and highly portable kit offers a convenient, accurate layout that simplifies the surgical workflow while maintaining the uncompromising precision required for successful implant placement.

Kit includes:



Ratchet wrench

RW

Implant Insertion Tools:



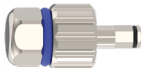
Handpiece 2.5mm (Long)

HAL



Handpiece 2.5mm (Short)

HAS



Hand/Ratchet

ITUS



2.5mm (Long)

IT2.5



2.5mm (Short)

ITS2.5



S-line 2.0mm (Long)

IT2



S-line 2.0mm (Short)

ITS2

Prosthetic Drivers Hex 1.25mm:



Long

AGM-400



Short

AGM-400-S



Hand

AGM-400-R



Handpiece

HB

Tools:



Drill extender

DE



Parallel pin x3

PP



Ref. BSKT

Drills:



DM



DP2



D2.8



D3.2



D3.65



D4.2



D4.6

Zygomatic Kit



Ref. ZSKT

Drills

- 1. Initial Drill
- 2. Point Drill
- 3. Side Cutter
- 4. S 2.0/2.5/3.0
- 5. S 2.8/3.2
- 6. S 3.2/3.7
- 7. L 2.0/2.5/3.0
- 8. L 2.7/3.2
- 9. L 3.2/3.7

Implant Insertion Tool



2.5mm (Long)
IT2.5

Prosthetic Drivers Hex



Long
AGM-400



Key Adabter for handpiece
Ø 6.35 mm
HDP

Surgical Screw Driver



Ø 6.35 mm
SDI



2.42mm



Zygomatic Depth Probe
DPT-Z

Patro Kit

The Patro Kit provides a complete and compact solution for one-piece implant procedures, including all the necessary tools for seamless implant insertion and neck bending.

Kit includes:



Ratchet wrench

RW

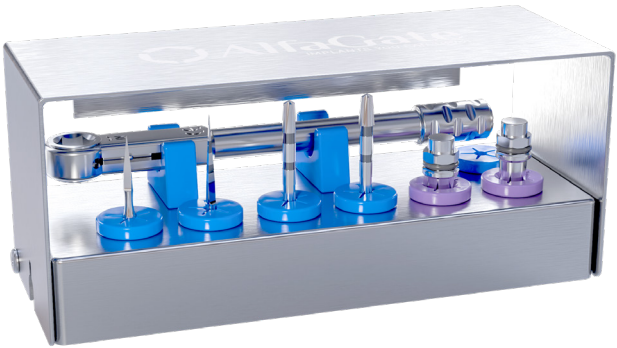
Drills

| Description | Point Drill 1.5 | Lance Drill 1.8 | Cortical Drill 2.5 | Cortical Drill 3.0 |
|---------------|-----------------|-----------------|--------------------|--------------------|
| Ø / Height mm | Ø 1.5 mm | Ø 1.8 mm | Ø 2.5 mm | Ø 3.0 mm |
| Ref. | DM1.5 | LD1.8 | CD2.5 | CD3.0 |

One-Piece Implant Insertion Tools

| Description | Long | Short |
|-------------|--------|--------|
| mm | 2.1 mm | 2.1 mm |
| Ref. | ITSL | ITSLS |

Additional Info: Used for insertion of One-Piece implant (Patro)
Material: Stainless Steel



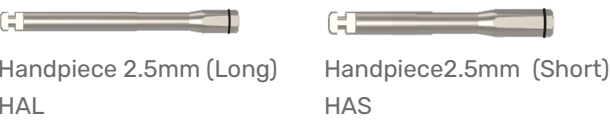
Ref. DPTRK

Conical Connection Kit

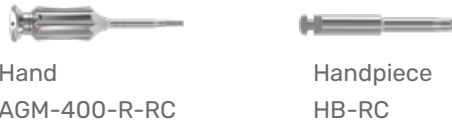
The Alfa Gate Conical Connection Kit is engineered for the precision placement of NP, RP, and RC conical connection implants, providing a streamlined and high-performance surgical workflow.

Kit includes:

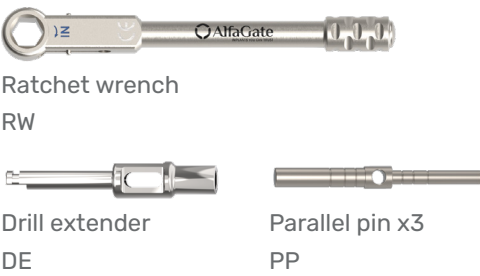
Implant Insertion Tools:



Prosthetic Drivers Hex 1.25mm



Tools:



Drills:



Drill stoppers:



Conical Connection Kit

Ref. SKTM

Surgical Instruments & Tools

Tissue Punch

| | | |
|------|--------|--------|
| Ø mm | 4.0 mm | 5.0 mm |
| Ref. | PCH-4 | PCH-5 |

Additional Info: Used for gingival punch and implant uncovering
Material: Stainless Steel

Trephine Drills

| | | |
|------|------------|------------|
| Ø mm | 4.0/5.0 mm | 5.0/6.0 mm |
| Ref. | TDR 4-5 | TDR 5-6 |

Additional Info: Used for bone harvesting and implant removal
Material: Stainless Steel

Marking Drill and Drill Extender

| | | | |
|---------------|---------------|-------------|----------------|
| Description | Marking drill | Lance Drill | Drill extender |
| Ø / Height mm | Ø 1.9 mm | Ø 1.5 mm | H :26mm |
| Ref. | DM | DM 1.5 | DE |

Additional Info: Extends drills by 17 mm for marking the cortical plate
Material: Stainless Steel

Standard Platform Implant Insertion Tools

| | | |
|-------------|---------|---------|
| Description | Long | Short |
| mm | 2.42 mm | 2.42 mm |
| Ref. | IT-2.5 | ITS-2.5 |

Additional Info: Used for internal hex implant insertion 2.42 mm (Bioactive, TRIO, MAX, Porous)
Material: Stainless Steel

S-line Implant Insertion Tools

| | | |
|-------------|--------|--------|
| Description | Long | Short |
| mm | 2.0 mm | 2.0 mm |
| Ref. | IT-2 | ITS-2 |

Additional Info: Used for internal hex implant insertion 2.0 mm (S-line)
Material: Stainless Steel

One-Piece Implant Insertion Tools

| | | |
|-------------|--------|--------|
| Description | Long | Short |
| mm | 2.1 mm | 2.1 mm |
| Ref. | ITSL | ITSLS |

Additional Info: Used for insertion of One-Piece implant (Patro)
Material: Stainless Steel

M+ Conical Implant Insertion Tools

| | | | | | |
|-------------|-----------|------------|-----------|------------|---|
| Description | NP - Long | NP - Short | RP - Long | RP - Short | Additional Info: Used for Conical Connection implant insertion Material: Stainless Steel |
| Ref. | IT-NP | ITS-NP | IT-RP | ITS-RP | |

Trio RC Implant Insertion Tools

| | | | |
|-------------|-----------|------------|---|
| Description | RC - Long | RC - Short | Additional Info: Used for Conical Connection implant insertion Material: Stainless Steel |
| Ref. | IT-RC | ITS-RC | |

Contra Angle Drivers

| | | | | |
|-------------|---------------------------------|--------------------------------|---------------------------------|---------------------------|
| Description | Handpiece 2.42mm insertion tool | Handpiece 2.0mm insertion tool | Handpiece 1.25mm insertion tool | Key adaptor for handpiece |
| mm | 2.42 mm | 2.0 mm | 1.25 mm | 6.35 mm |
| Ref. | HA | HC | HB | HPD |

Additional Info: Recommended insertion speed 15-25 RPM
Material: Stainless Steel

Parallel Pin and Spacer

| | | | |
|-------------|-----------------|--------------|--|
| Description | Drilling spacer | Parallel pin | Used for parallel placement of implant |
| mm | 2.42 mm | 2.0/2.8 mm | |
| Ref. | SPR | PP | |

Additional Info: Used for precise spacing and parallel placement of implant
Material: Stainless Steel

Prosthetics Hex Drivers 1.25mm SP Connection

| | | | |
|-------------|---------|----------|--|
| Description | Long | Short | Additional Info: Compatible with all Alfa Gate prosthetics and screws Material: Stainless Steel |
| Ref. | AGM-400 | AGM-400S | |

Prosthetics Hex Drivers 1.25mm Conical Connections

| | | | | |
|-------------|------------|--------------|-----------|-----------|
| Description | Long | Short | Hand | Handpiece |
| Ref. | AGM-400-RC | AGM-400-S-RC | AGM-400-R | HB |

Insertion Driver for Implant Carrier

| | | | |
|-------------|------------------|-------------------|--------------|
| Description | Handpiece - Long | Handpiece - Short | Hand/Ratchet |
| mm | 2.42 mm | 2.42 mm | 2.42 mm |
| Ref. | HAL | HAS | ITUS-2.5 |

Additional Info: Recommended insertion speed 15-25 RPM
Material: Stainless Steel

Surgical Instruments & Tools

Universal Torque Wrench 10-45 Ncm

| | |
|------|--------|
| Ø mm | 6.35mm |
| Ref. | TW |



Additional Info: Allows the clinician to accurately apply the recommended preload torque for implant insertion and prosthetics

Material: Stainless Steel

Ratchet Wrench

| | |
|------|--------|
| Ø mm | 6.35mm |
| Ref. | RW |



Additional Info: The ratchet wrench is used for implant placement and tightening

Material: Stainless Steel

Prosthetic Holder

| | |
|------|---------|
| Ø mm | 2.42 mm |
| Ref. | PH |



Additional Info: Provides an easy way to shape and grind abutments

Material: Stainless Steel

Surgical Screw Driver

| | |
|------|--------|
| Ø mm | 6.35mm |
| Ref. | SDI |



Additional Info: Manual implant driver allows tactile feel and controlled implant insertion

Material: Stainless Steel

Implant Depth Probe

| | |
|------|--------|
| Ø mm | 2.0 mm |
| Ref. | DPT |



Additional Info: Implant site depth probe.

Material: Stainless Steel



Surgical Drills

Dual Step Drill External Irrigation

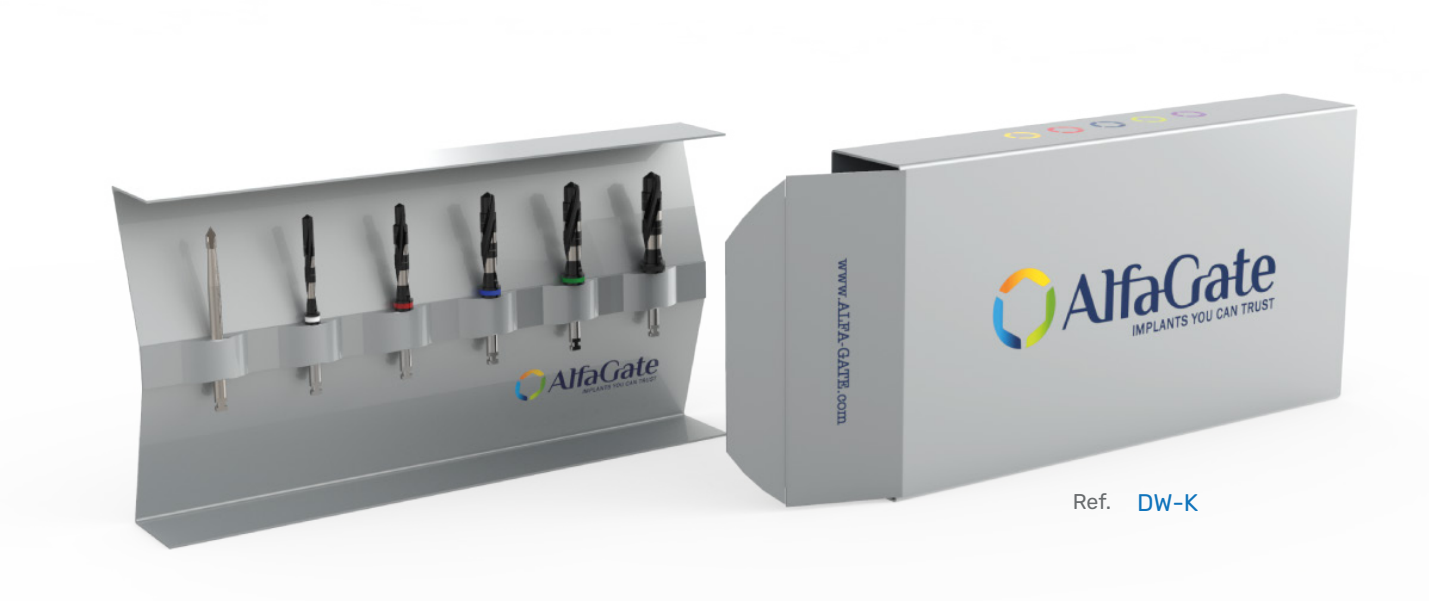
| | | | | | | | |
|-----------|---------|---------|---------|---------|---------|---------|---------|
| Ø mm | 2.0 mm | 2.8 mm | 3.2 mm | 3.65 mm | 4.2mm | 4.6mm | 5.2mm |
| Height mm | 37.6 mm | 37.6 mm | 37.6 mm | 37.6 mm | 37.6 mm | 37.6 mm | 37.6 mm |
| Ref. | DP2 | D2.8 | D3.2 | D3.65 | D4.2 | D4.6 | D5.2 |

Material: Stainless Steel

Drill Replacement Kit

| | | | | | | |
|------|---------------|--------|--------|--------|---------|--------|
| Ø mm | Marking Drill | 2.0 mm | 2.8 mm | 3.2 mm | 3.65 mm | 4.2 mm |
| Ref. | DM | DB2 | D2.8 | D3.2 | D3.65 | D4.2 |

Material: Stainless Steel



Ref. DW-K

Dual Step Drills For Stoppers Sleeves

| | | | | | | | |
|------|--------|-----------|-----------|------------|------------|-----------|-----------|
| Ø mm | 2.0 mm | 2.8 mm | 3.2 mm | 3.65 mm | 4.2 mm | 4.6 mm | 5.2 mm |
| Ref. | DB2 | DB2.0-2.8 | DB2.8-3.2 | DB3.2-3.65 | DB3.65-4.2 | DB4.2-4.6 | DB4.6-5.2 |

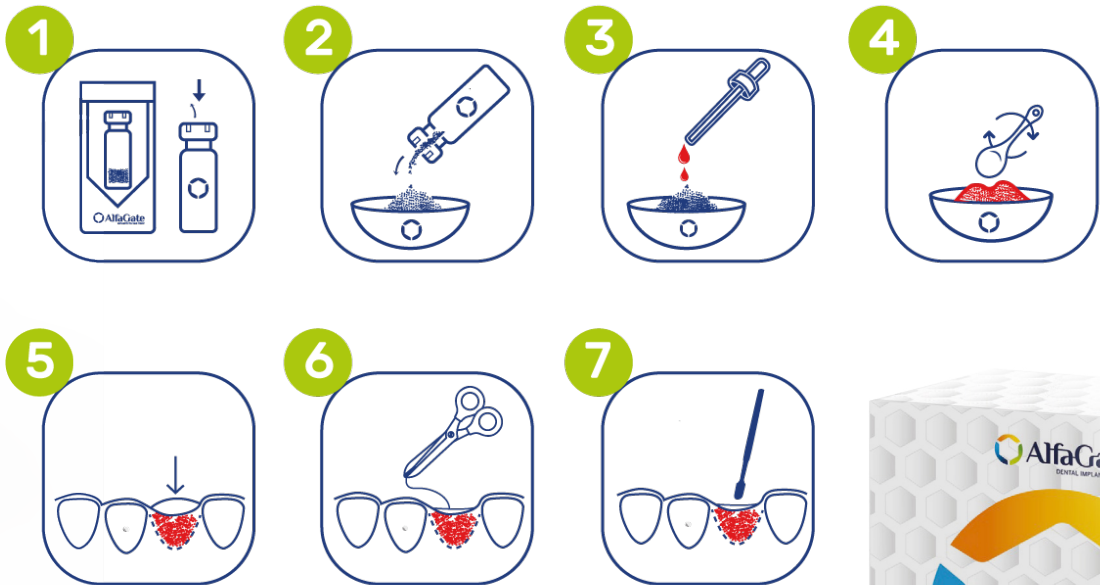
Material: Stainless Steel

The Alfa Gate Alfa Bone is a premium, fully synthetic biphasic bone substitute engineered for controlled resorption and superior mechanical stability. Composed of a balanced 75% Hydroxyapatite (HA) and 25% Beta-Tricalcium Phosphate (β -TCP) formula, it facilitates rapid new bone formation while effectively maintaining long-term graft volume.

Applications:

- Periodontal defects.
- Sinus floor elevation.
- Alveolar augmentations.
- Socket preservation.

Handling



| Description | 0.1-0.5 mm | 0.5-1.0 mm | 1.0-2.0 mm |
|-------------|------------|------------|------------|
| mm | 1g x 5 | 1g x 5 | 1g x 5 |
| Ref. | ALBXXS-5 | ALBS-5 | ALBL-5 |



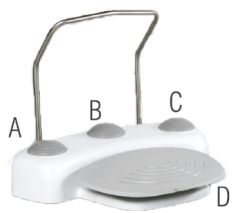
the Alfa Motor system utilizes an advanced electronic motor and sophisticated control algorithms to deliver exceptional smoothness. The sleek, ergonomic design features smooth edges for effortless sterilization, while the intuitive LCD display and haptic keys with audible feedback ensure rapid, accurate setup.

For maximum clinical efficiency, the system incorporates a front-access push button and dedicated compartment for seamless, one-handed tube replacement.

Surgical Handpieces (20:1)



Multi-Functional Foot Control (Ki-F20)



- A-Coolant (4 steps)
- B-Program (9 programs)
- C-F/R direction
- D-Speed foot control

The tube bracket swings out and stays in plain sight while the tube set is positioned between the two notches of the bracket. A broad variety of extensions and accessories are available.

Features

- Suitable for oral and maxillofacial surgery
- Maximum 70 Ncm torque (20:1)
- Speed range and torque level



| | | | | |
|------------|--------------|----------------|------------|------------|
| Gear Ratio | 1 : 1 | 1 : 2 | 20 : 1 | 32 : 1 |
| RPM | 600 - 40,000 | 1,200 - 80,000 | 20 - 2,000 | 20 - 1,200 |
| NCM | - | - | 5 - 70 | 5 - 90 |

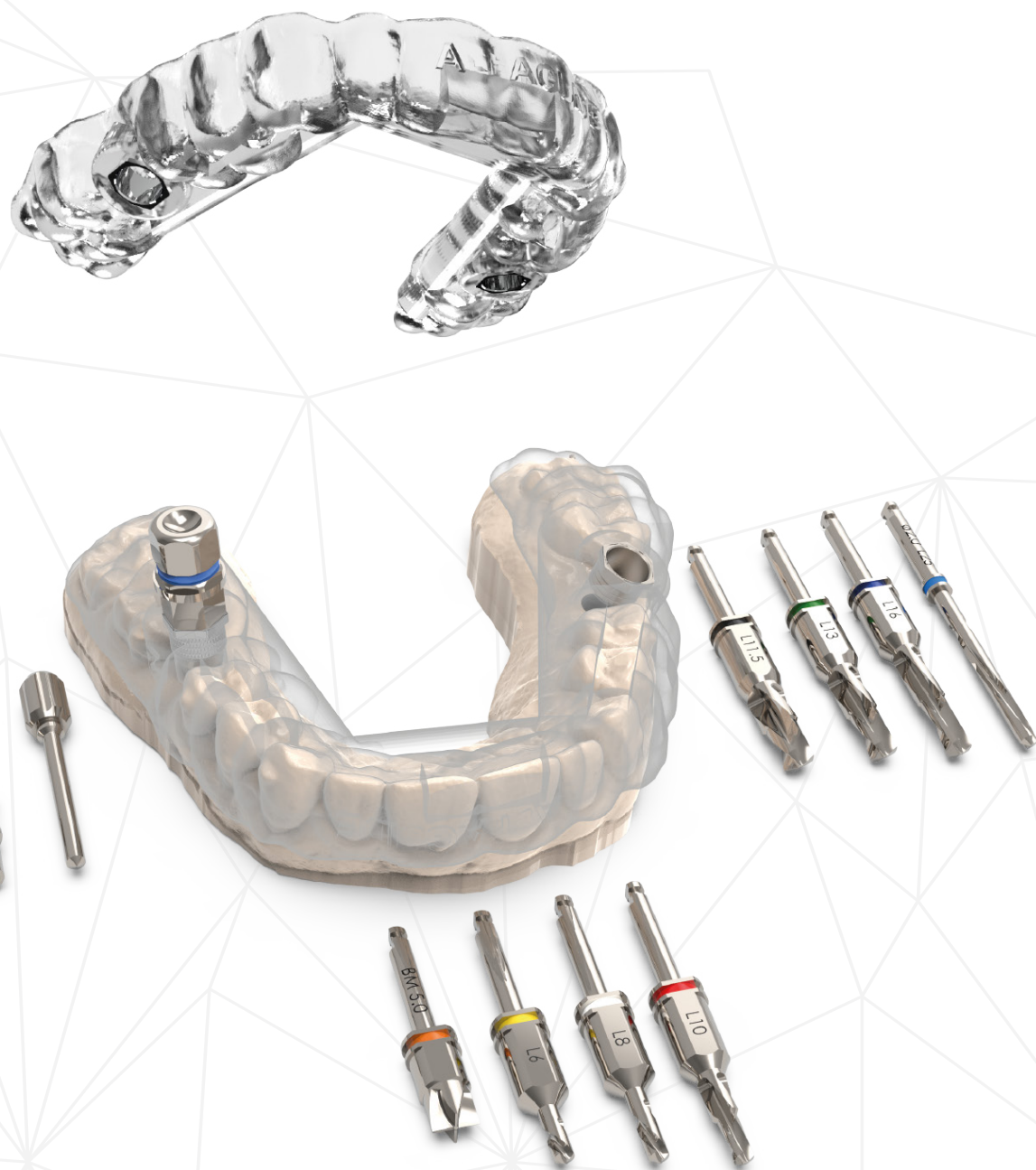
- 9 Memory programs - optic(on/off), speed, gear ratio, coolant, forward/reverse, torque.
- LCD display

Ref.

- AGPHY Alfa Motor Physio dispenser
- AGHP Fiber optic hand piece
- AGPHT Irrigation tube



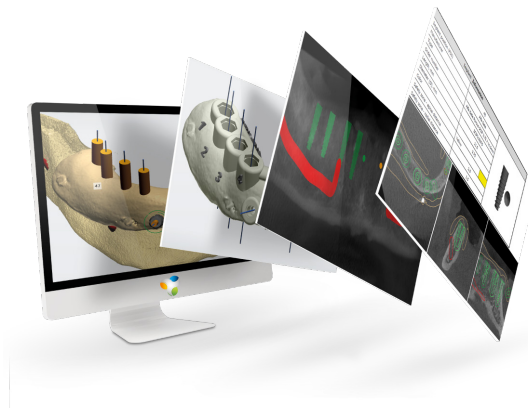
Alfa Gate delivers a comprehensive prosthetic-driven planning solution, utilizing advanced Alfa Guide digital technology to ensure ideal dental restoration. Our elite team of oral surgeons and master technicians leverages decades of innovation to provide a fully guided surgical workflow from start to finish. By utilizing the complete Alfa Guide Package, clinicians are guaranteed a precise, predictable, and safe clinical execution for optimal implant placement.



Advantages of Alfa Guide

Digital Dentistry Done Right!

The surgical plan is done by experienced oral surgeons, Alfa Guide Team plans the virtual surgical procedure effortlessly and effectively.



Available Advisory

Alfa Guide Team offers consultancy for every case, with special guidance to perform the most ideal surgical procedure.

Surgical Guide You Can Trust

Perfect fit for precise implant placement guaranteeing successful procedure even in the most challenging cases. Varying diameters can be inserted in the surgical Guide, from 3mm to 5mm and up to 16mm in length.



Intuitive Kit Layout

The surgical kit makes the surgical procedure easier and more precise due to its straight forward and simple design; The comprehensive and single kit layout has insertion tools and drills for all implant platforms.

Innovative Sleeve Design

Titanium Sleeve with Hex indication for accurate final implant placement.



Alfa Guide Sleeves

| Description | Full Sleeve | Narrow Sleeve | Open Sleeve | Anchor Sleeve | Pilot Drill Sleeve |
|-------------|-------------|---------------|-------------|---------------|--------------------|
| mm | 5mm | 5mm | 5mm | 7mm | 5mm |
| Ref. | SLV-F | SLV-N | SLV-O | SLV-A | SLV-P |
| Internal Ø | 5mm | 5mm | 5mm | 2mm | 2mm |

Alfa Guide Surgical Kit

The Alfa Guide Surgical Kit is a highly intuitive, comprehensive system containing every essential tool for seamless guided surgery. Featuring a streamlined color-coded drilling sequence and a single-layout configuration, the kit enables maximum efficiency and organization.

With specialized insertion keys included, clinicians can perform fully guided implant placement directly through the surgical guide, ensuring unparalleled accuracy and predictable clinical outcomes.

Kit Layout Categories

Site preparation

Tissue Punch Ø5mm

Bone Mill

Fixation Pin

Fixation Drill Ø2- L19mm

Pilot Drill Ø2- L25mm

Drilling

Ø2.0mm

Ø2.8mm

Ø3.2mm

Ø3.65mm

Ø4.2mm

Drills Lengths:
L: 6 / 8 / 10 / 11.5 / 13 / 16mm

Implant Insertion

Standard Platform ITG-2.5

Standard Platform ITG-2.5L

M+ Narrow Platform ITG-NP

M+ Regular Platform ITG-RP

S-line 3.0mm Narrow- ITG-2

Tools and Fixation

Hand Piece Adapter HAS

Long prosthetics Key AGM-400

Short prosthetics Key AGM-400-S

Drill Extender DE

Fixation Crestal Screw

Torque Wrench TW

Advantages of Alfa Guide Surgical Kit

Tissue punch- for minimally invasive procedures for flapless surgery.

Bone mill- designed for flattening crestal bone and knife edges or narrow alveolar ridges. Moreover, it can be used to remove the soft tissue after the use of tissue punch.

Start drill creates the initial osteotomy for the implant to make the drilling sequence more efficient.

Double stopper mechanism as Guided drills are designed with this mechanism, the drill stops at the sleeve level and at the bone level which makes the drilling **safer**.

Dual-step drill and its unique protocol maintain a previous diameter at the tip of its drill, ensuring that they not only stabilize at the guide level but also at the drill tip, thus **avoiding potential operator errors**.

The two flat sides of the drill allow for **maximal cooling** during osteotomy which allows for maintaining irrigation thus **avoiding bone heating**.

Surgical Kit Workflow:

1

Tissue punch

2

Bone mill

3

Start drill

4

Drilling Protocol

5

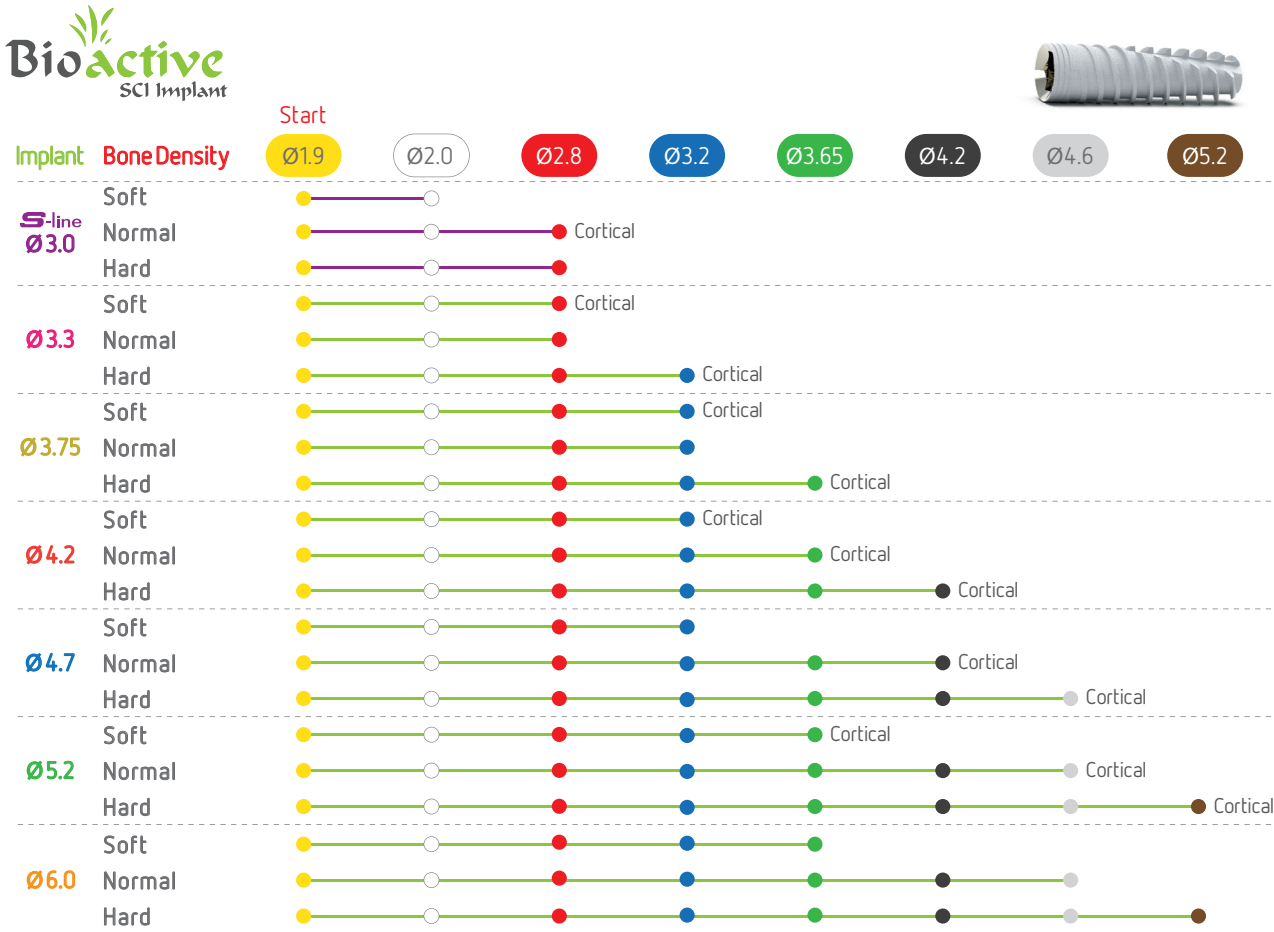
Insertion

DRILLING PROTOCOL

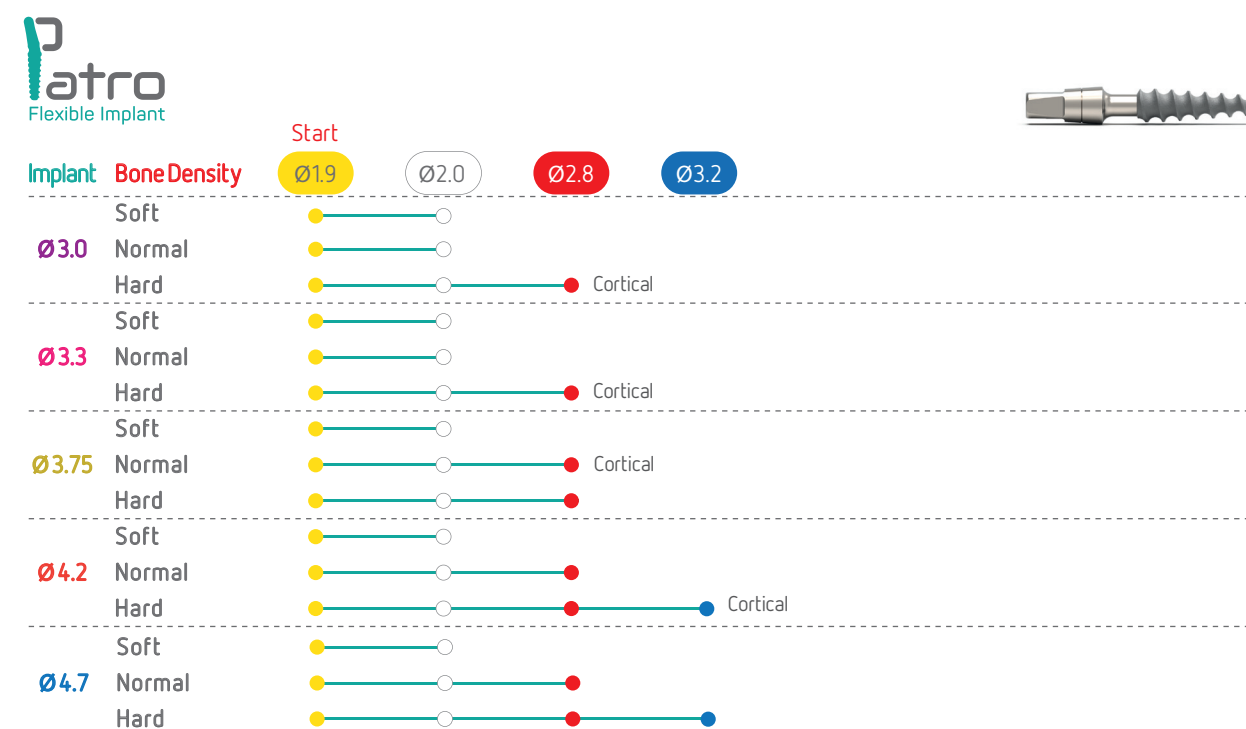
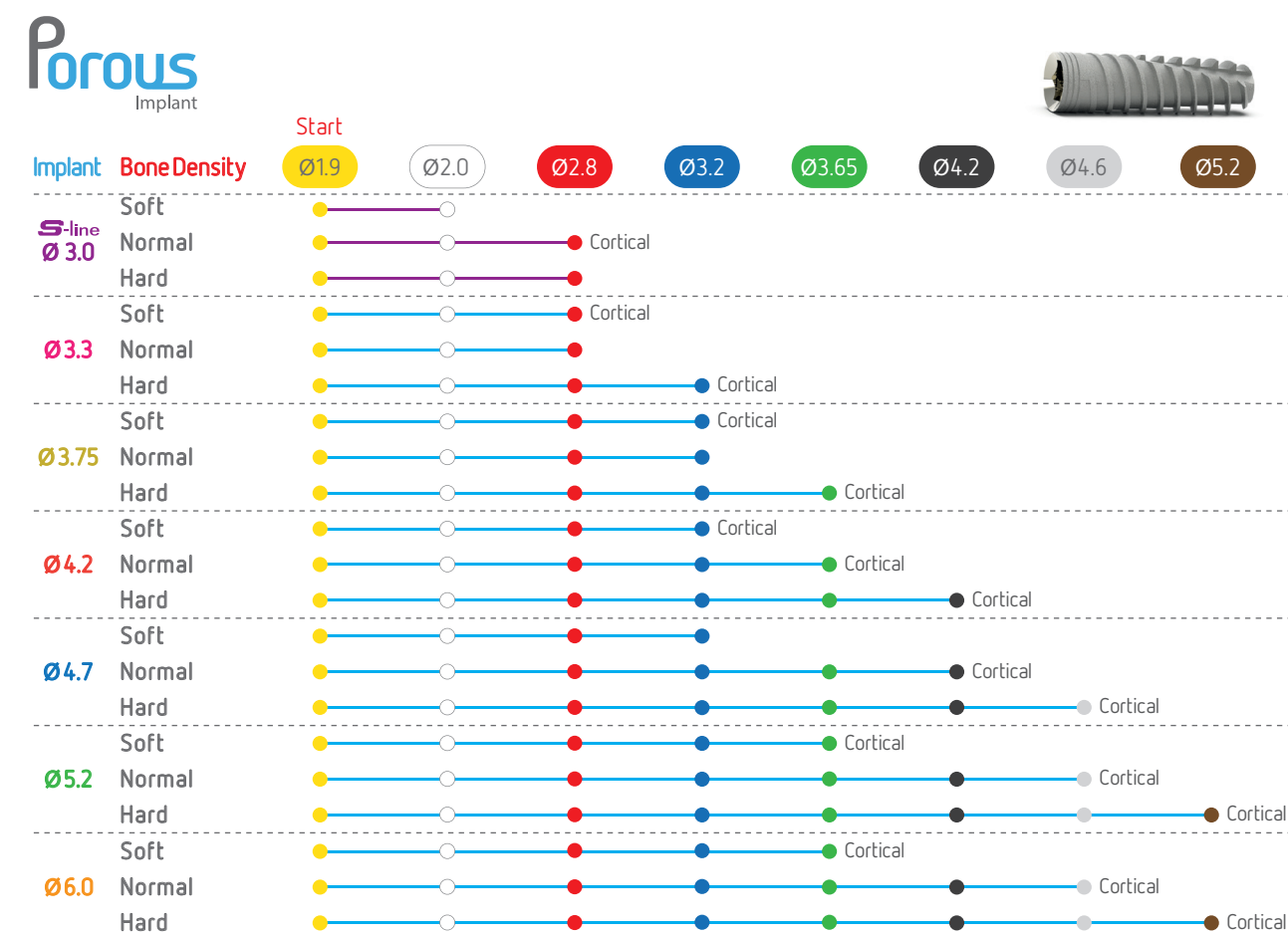
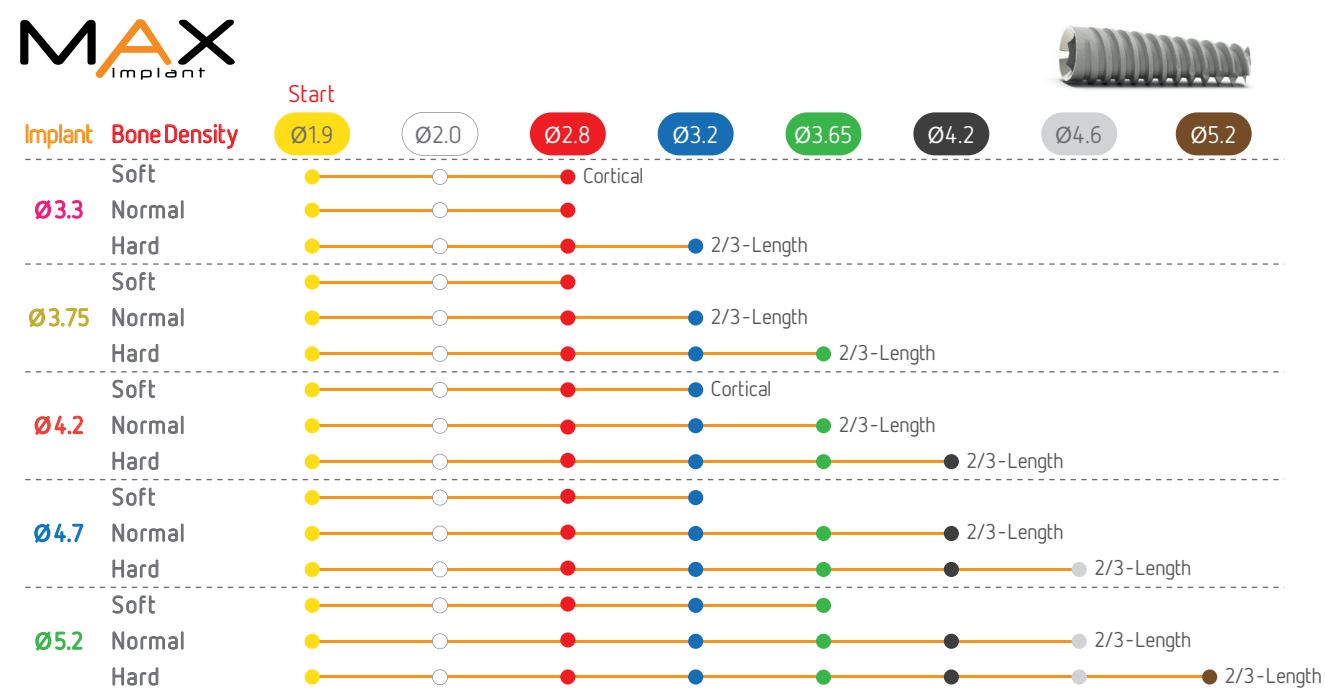
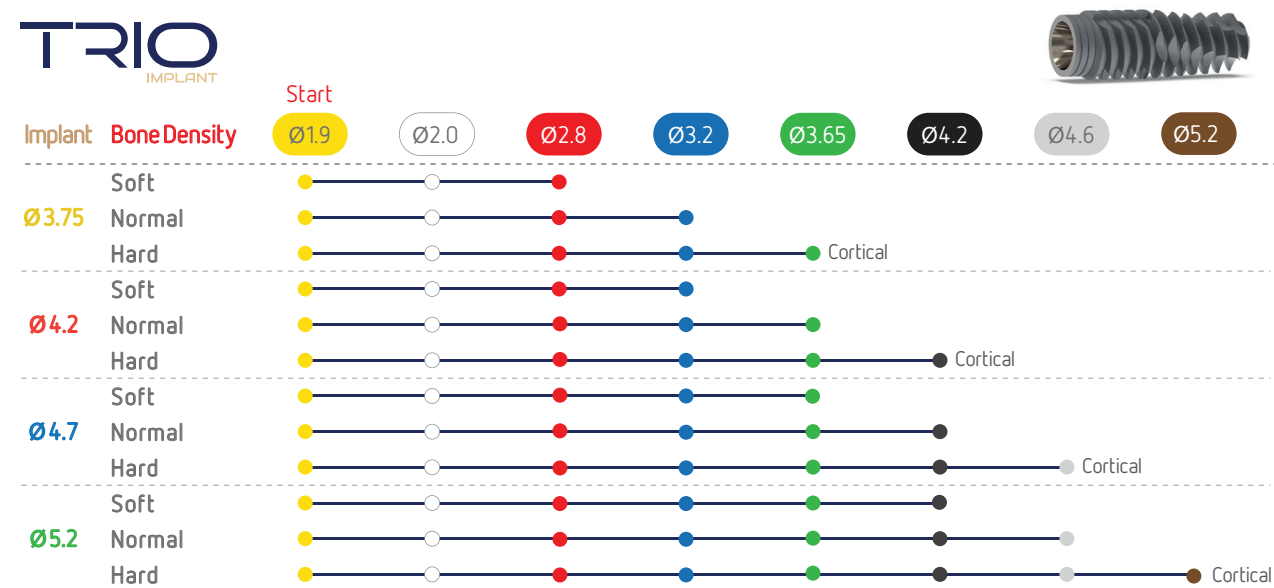
| | |
|----------------|----|
| Bioactive | 95 |
| Trio / Max | 96 |
| Porous / Patro | 97 |
| M+ / Trio | 98 |
| Drilling chart | 99 |



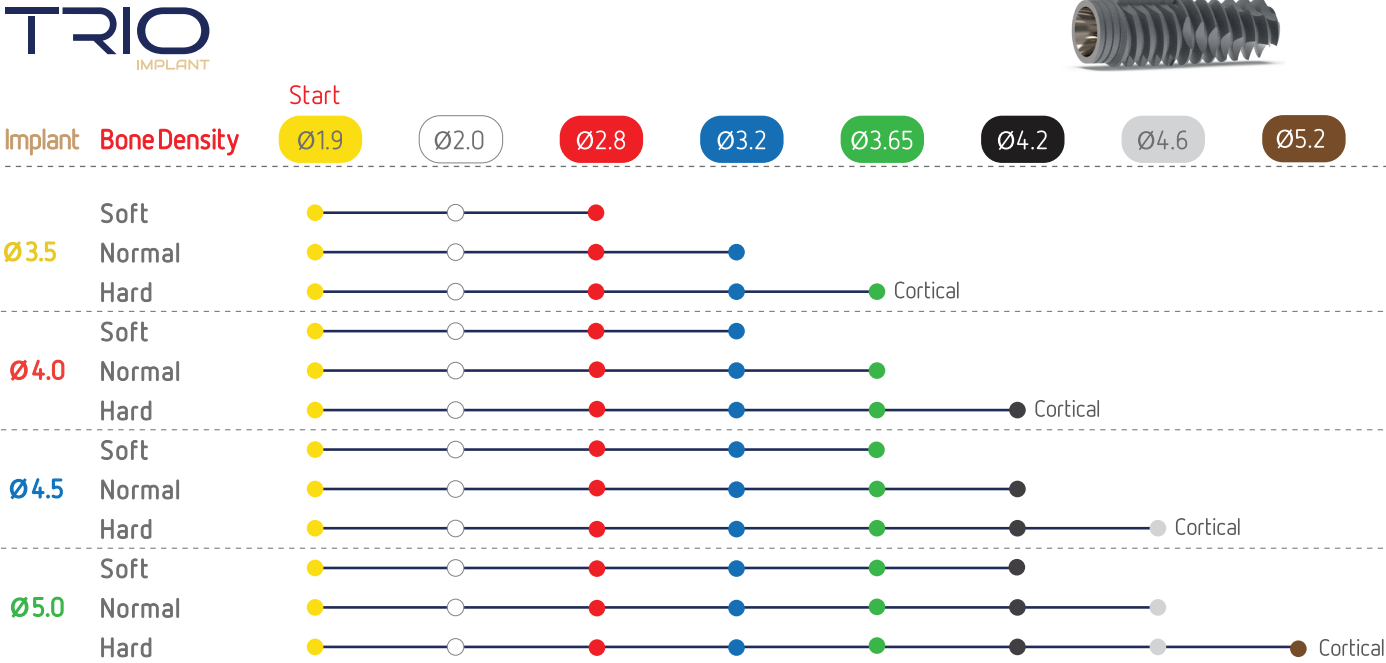
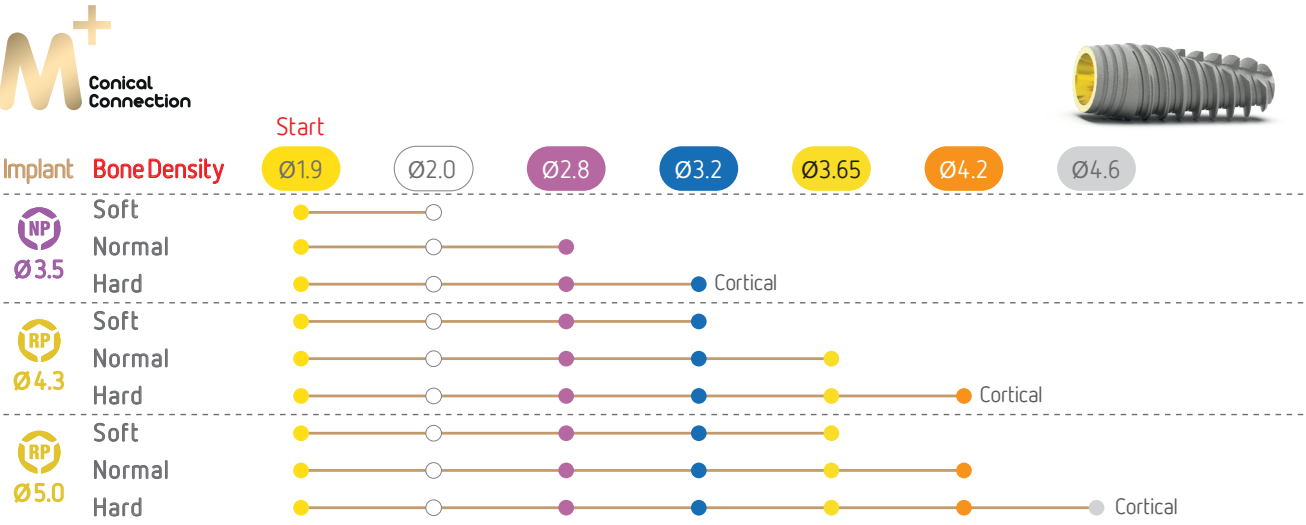
Drilling Protocols



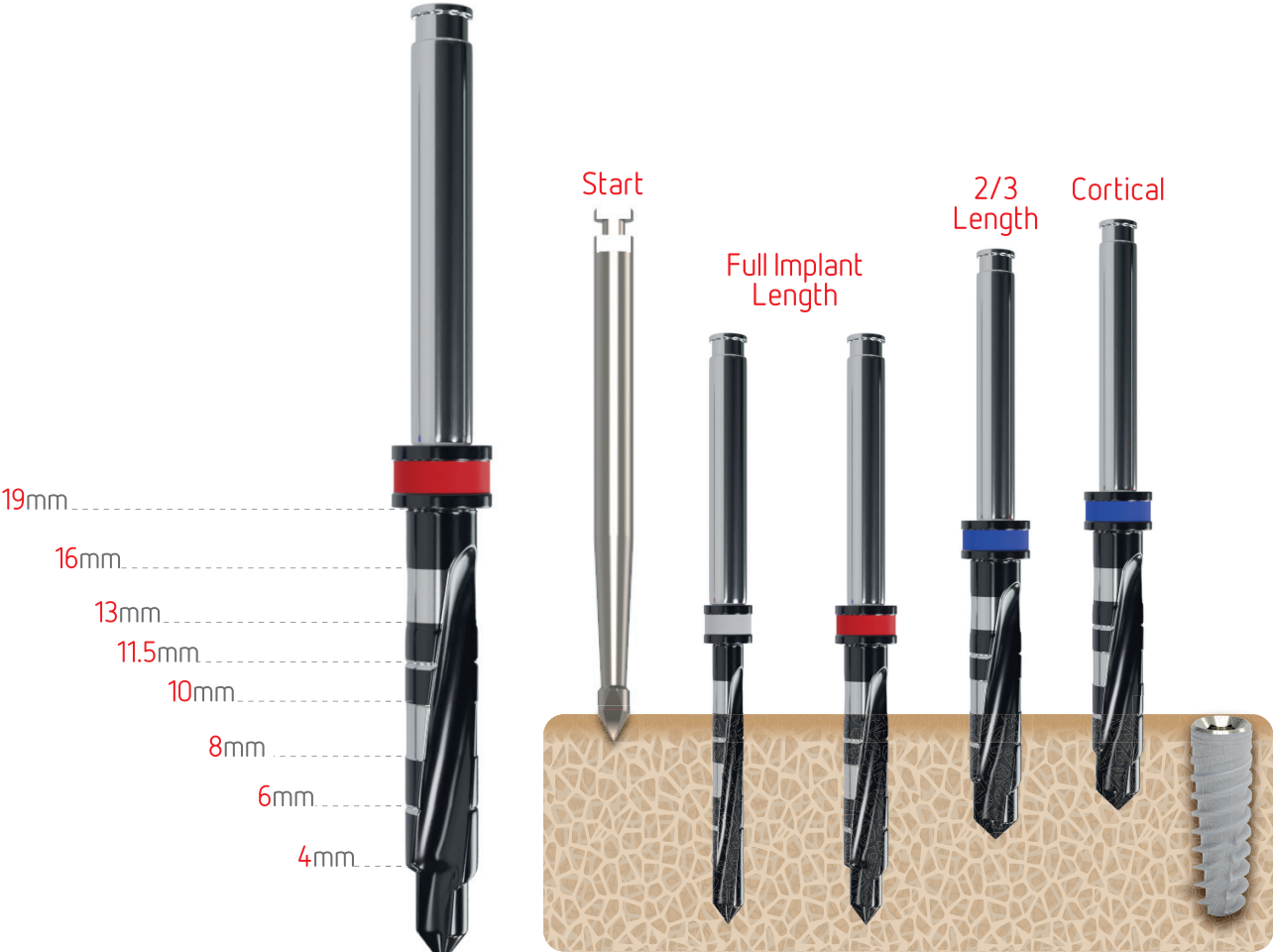
Drilling Protocols



Drilling Protocols



Drilling chart reference



- Drilling speed (RPM): 800-1200
- The drilling sequence is demonstrated with a 13mm implant.
- Alfa Gate drilling protocol is recommended for most clinical cases however, it cannot replace the surgeon's judgment and professional experience.

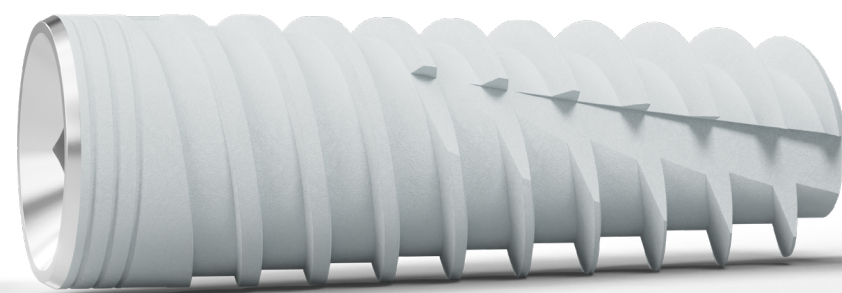
* Suggested Workflow for Ti-base compatible Sirona:

1. Scan intra orally or on your model.
2. For scanning, use Alfa Gate's sirona compatible Ti-Base, use sirona's scan body size L, (sirona's Ref. 6431329 for omnicam or 6431303 for bluecam).
3. On your CAD software library choose: internal hex platform, choose: Zimmer Tapered Screw Vent 3.5mm platform.
4. Follow sirona's standard instructions for CAD design of your restoration.
5. Use standard L blocks or equivalent for milling your abutment.
6. Cement Ti-Base to the milled and sintered block using the manufacturer's cementation instructions.

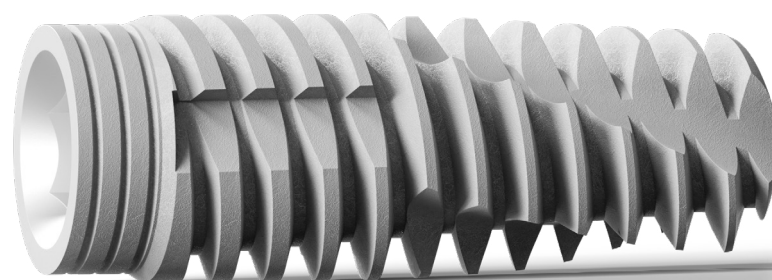


SCAN

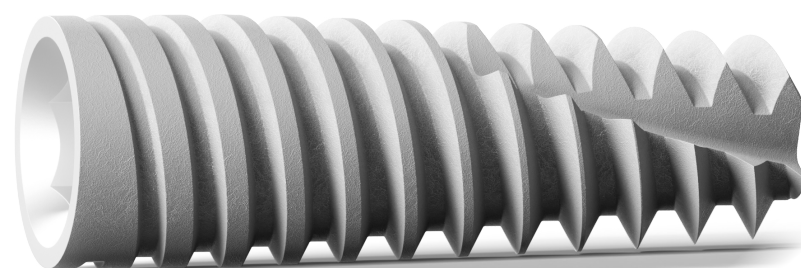
for more instructional videos.



Bioactive
SCI Implant



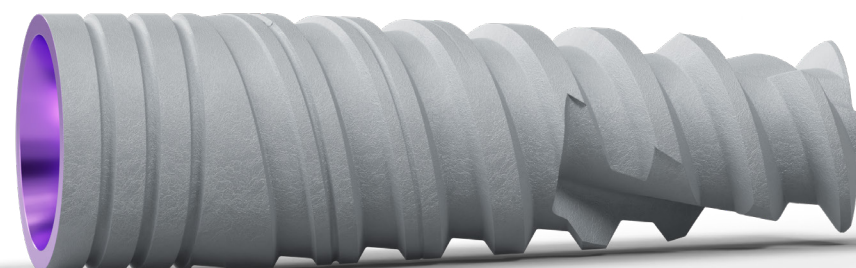
TRIO
IMPLANT



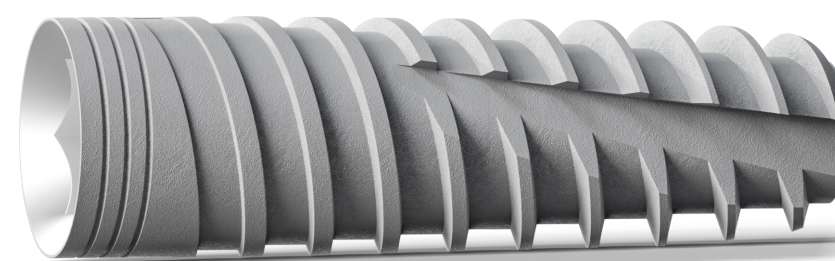
MAX
Implant



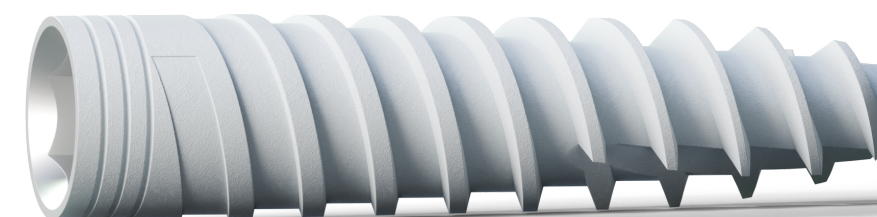
M+ Conical Connection **RP**



M+ Conical Connection **NP**



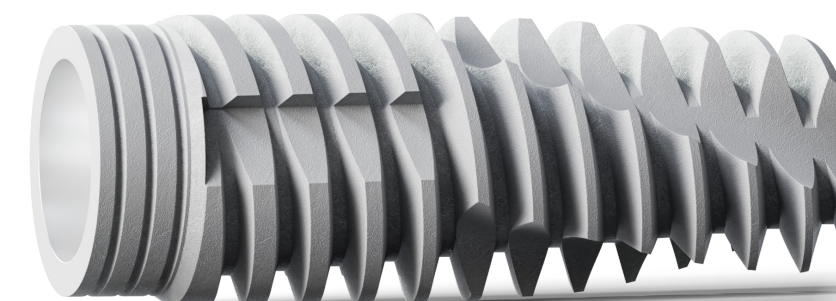
Porous
Implant



S-line



patro
Bendable Neck



TRIO
IMPLANT **RC**



ZYCOMATIC



Alfa Gate adheres to the most stringent international standards,
complying with EN:ISO 13485:2003 and ISO 9001:2008

Product availability may vary between countries.



www.alfa-gate.com