

INDEX

Company Profile	4	Surgical Kits & Instruments	74-87
Our Advantages	5	Advanced Kit	76
Implants	6-33	Premium Kit	78
Internal Hex	6-25	Prime Kit	80
Bioactive	8	Zygomatic kit /Patro Kit	81
Trio	12	Conical Connection	82
Max	14	Surgical Instruments & Tools	84
Porous	16	Surgical Drills	87
S-line	18		
Zygomatic	20	Alfa Bone	88
Pterygoid	22	Alfa Motor	89
Patro	24	Alfa Guide	90-93
		Drilling Protocols	94-98
Conical Connection	26-33	Bioactive	95
M+ RP	28	Trio / Max	96
M+ NP	30	Porous / Patro	97
Trio RC	32	M+ / Trio	98
		Drilling Chart Reference	99
Packaging & Handling	34-35		
Prosthetics Options	36-73		
Internal Hex	36-52		
S-line Prosthetic	38		
S-line Multi-Unit	39		
S-line Ball attachment	40		
S-line Alfa-Lock	41		
S-line CAD/CAM	42		
SP Prosthetic	43		
SP CAD/CAM	48		
SP Multi-Unit	50		
SP Ball attachment	52		
SP Alfa-Lock	53		
Conical Connection	54-61		
RP Prosthetic	56		
RP Multi-Unit	58		
RP CAD/CAM	59		
RP Ball attachment	60		
RP Alfa-Lock	61		
NP Prosthetic	62		
NP CAD/CAM	64		
NP Ball attachment	65		
NP Alfa-Lock	66		
RC Prosthetic	68		
RC Multi-Unit	70		
RC CAD/CAM	72		
RC Alfa-Lock	73		



COMPANY PROFILE

With over 30 years of global excellence, Alfa Gate is a premier manufacturer of high-performance dental implants and prosthetic solutions. Engineered with German precision and technological innovation, our expansive portfolio of over 800 products is meticulously engineered to merge technological innovation with clinical precision, empowering dental professionals to achieve

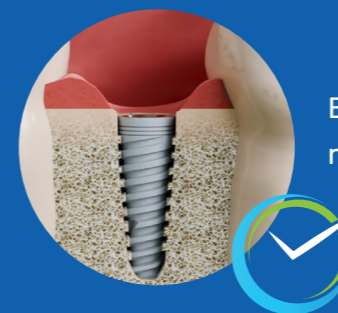
superior patient outcomes.

From advanced CAD/CAM workflows and the Alfa Guide Surgical System to a comprehensive range of prosthetic variations, we provide the versatile tools necessary for every clinical scenario.

Beyond our manufacturing scale, we foster professional growth through the International Alfa Gate Academy, offering tailored education and expert consultancy. Today, Alfa Gate's commitment to R&D and manufacturing excellence serves clinicians in over 60 countries across the Americas, Europe, the Middle East, and Asia.



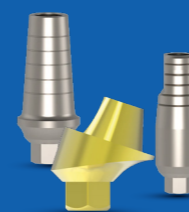
OUR ADVANTAGES



Bioactive implant has a unique CaP surface technology that has revolutionized the dental world by reducing **healing time** to 6- 10 weeks.



Our Team consists of **experienced dentists** developing products catered to dentists' best interests.



Wide variety of prosthetic options to complete every restorative procedure.



A single key for our **entire range** of prosthetic parts.



Numerous scientific studies including clinical trials conducted in established European universities **authenticate** our claims.



Alfa Gate Surgical Kits offer the **exact tools needed** for every case in a convenient and accurate layout.

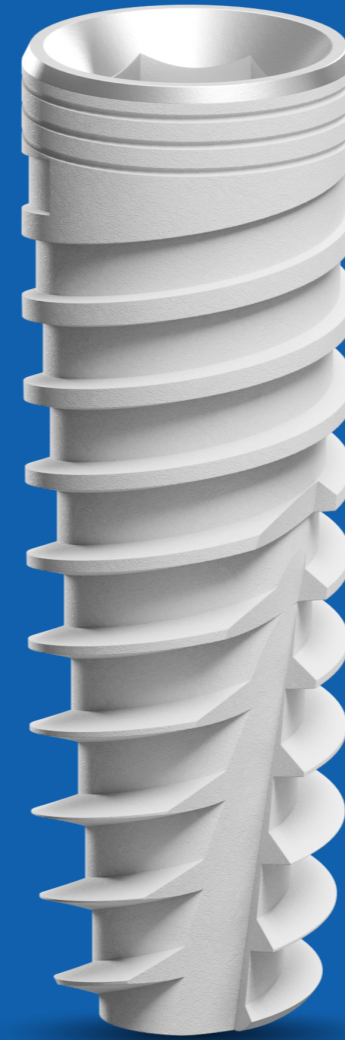
IMPLANTS

INTERNAL HEX



Bioactive	8-11
Trio	12-13
Max	14-15
Porous	16-17
S-line	18-19
Zygomatic	20-21
Pterygoid	22-23

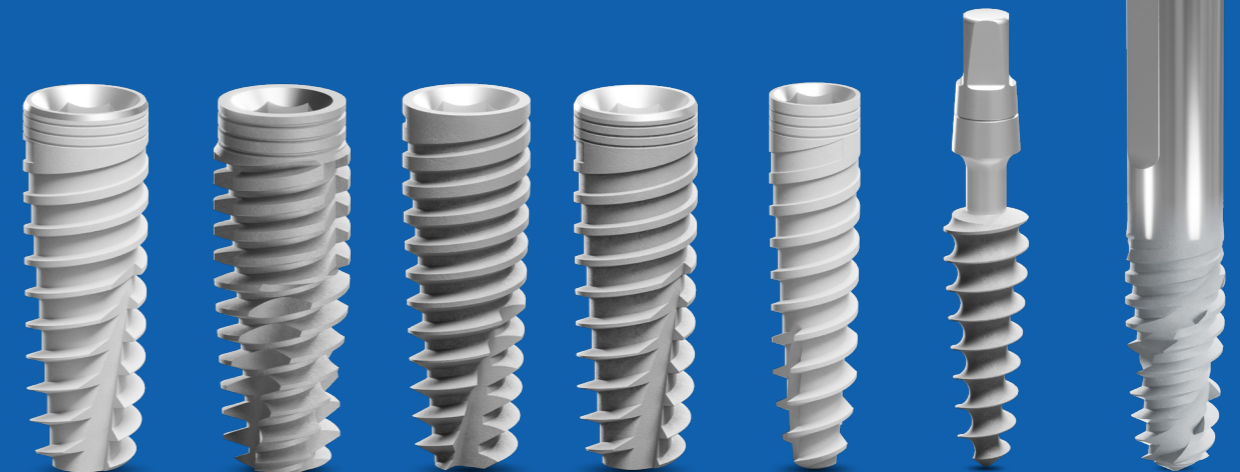
One-Piece implant	
Patro	24-25



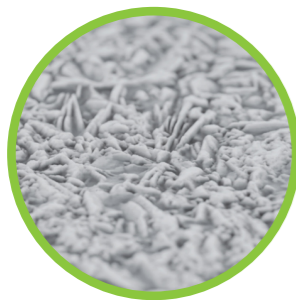
+30
Years Of Experience

+60
Countries

+800
Product



The **Bioactive implant** is redefining implantology through its advanced hydrophilic surface technology, engineered for high predictability and exceptional clinical success rates. Specifically optimized for compromised clinical scenarios, the Bioactive surface promotes accelerated osseointegration, significantly shortening recovery periods even in the most challenging physiological environments.



Bioactive has a completely resorbable **calcium-phosphate surface**.



The implant's **hydrophilic** surface attracts the stem cells.



The osteoinductive characteristics of the surface results in successful osseointegration and improved implant anchoring.

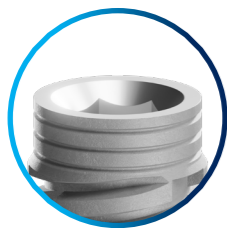


Bioactive's outstanding characteristics accelerate healing time up to **6-10 weeks** instead of 3-6 months post-operation.

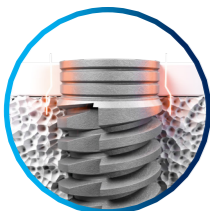


The **hydrophilic CaP surface** is fully resorbable, ensuring optimal outcomes

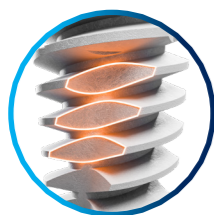
Alfa Gate is proud to introduce the **TRIO Implant**, a sophisticated advancement in dental engineering designed for incomparable performance. Engineered as a universal solution for **all bone densities (Types I-IV)**, the TRIO system is clinically proven to achieve **superior primary stability** and exceptional mechanical engagement, even in the most demanding clinical environments.



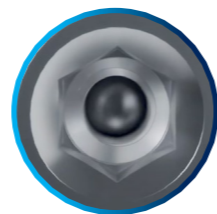
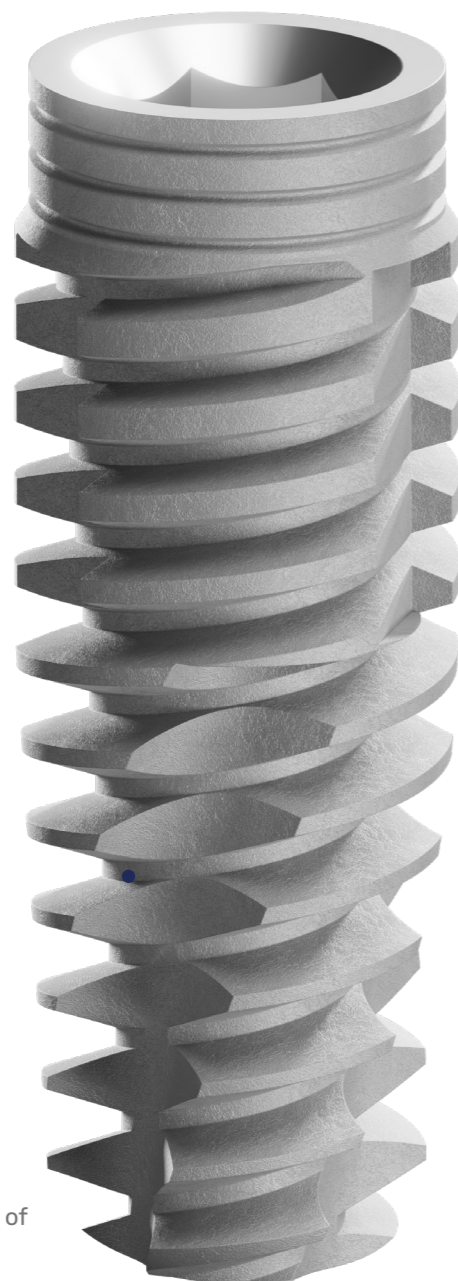
Triple Micro Rings increase BIC
Triple Micro-Rings that enhance bone formation and increase BIC.



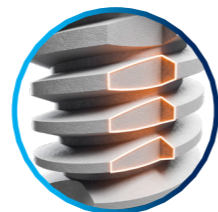
Coronally Reduced diameter
for less bone stress in the cortical bone.



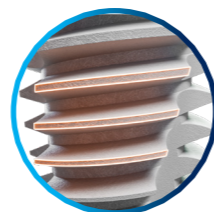
Triple Flutes Define Bone Compression
Triple flutes to improve distribution of axial forces, thus defining bone compression.



Implant Platforms
Standard Platform for all implant diameters 2.42mm.



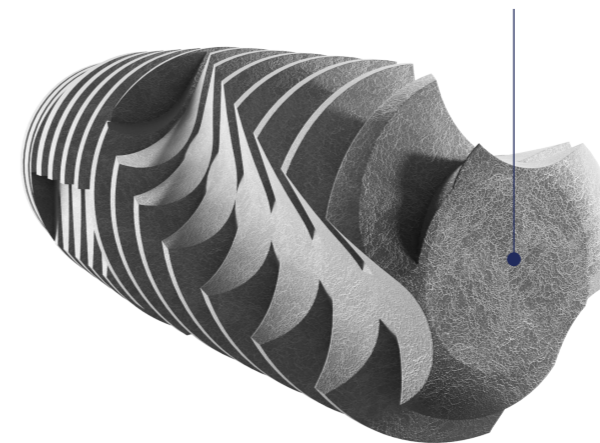
Triple Drilling Grooves
Drilling grooves enable cutting through the cortical bone for efficient insertion and torque distribution.



Unique Thread Design
to cut and condense the bone to increase implant primary stability.

Flat Active Apex

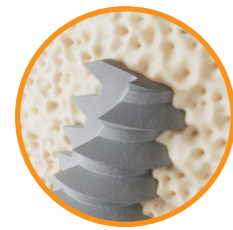
A cutting flat active apex is ideal for immediate placement



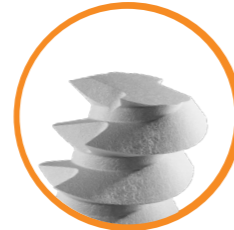
Material: Titanium Alloy Ti 6Al 4V ELI | SLA surface
Item includes: Cover screw and implant carrier
Connection: Screw type implant 2.42 mm internal hex
Surface: Sand-blasting and Acid-etching

Diameter	Length	6mm	8mm	10mm	11.5mm	13mm	16mm	19mm
			DFCI6375	DFCI8375	DFCI10375	DFCI115375	DFCI13375	DFCI16375
	DFCI642	DFCI842	DFCI1042	DFCI11542	DFCI1342	DFCI1642	DFCI1942	
	DFCI647	DFCI847	DFCI1047	DFCI11547	DFCI1347	DFCI1647	-	
	DFCI652	DFCI852	DFCI1052	DFCI11552	DFCI1352	DFCI1652	-	

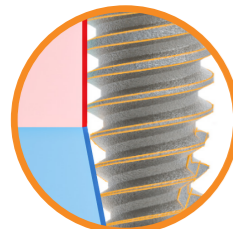
The Max Implant is engineered for high-performance clinical outcomes, featuring a specialized design that excels in immediate loading protocols. Its aggressive thread profile provides exceptional mechanical engagement, ensuring **maximum primary stability** even in soft bone or extraction sockets. Integrated **platform switching** works in harmony with the implant's architecture to preserve crestal bone and promote long-term soft-tissue health. This versatile solution empowers clinicians to achieve predictable, aesthetic results in the most demanding surgical scenarios.



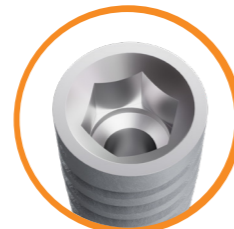
MAX is the best implant for **immediate placement**.



The **flat cutting apex** assures fast and soft insertion in the bone.



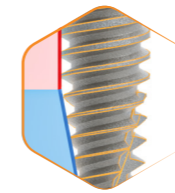
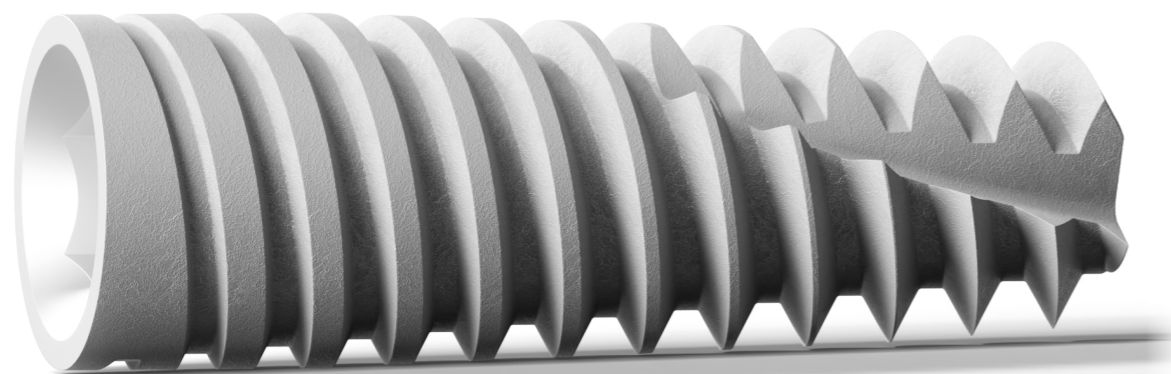
The unique Cycon™ body consists of **combined cylindrical and conical shapes**.



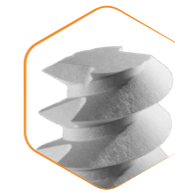
The implant internal hex connection has a **single prosthetic connection** for all implant diameters.



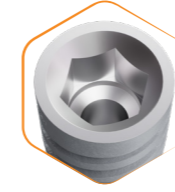
Thus, MAX is designed to achieve **superior primary stability**.



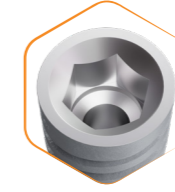
Combined Cylindrical and Conical Body



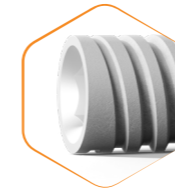
Flat and Cutting Apex



Variable Thread Design



Single Platform



Internal Hex Connection with Conical Sealing Design

Material: Titanium Alloy Ti 6Al 4V ELI
Item includes: Cover screw and implant carrier
Connection: Screw type implant 2.42 mm internal hex
Surface: Sand blasting and Acid-etching

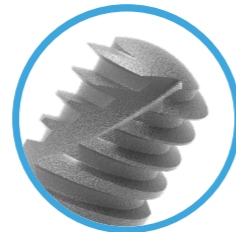


Diameter	Length	6mm	8mm	10mm	11.5mm	13mm	16mm
		Ø 3.3	-	MX833	MX1033	MX11533	MX1333
Ø 3.75	-	-	MX8375	MX10375	MX115375	MX13375	MX16375
Ø 4.2	MX642	MX842	MX1042	MX11542	MX1342	MX1642	
Ø 4.7	MX647	MX847	MX1047	MX11547	MX1347	MX1647	
Ø 5.2	MX652	MX852	MX1052	MX11552	MX1352	MX1652	

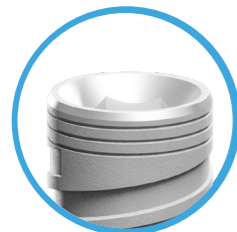
The **Porous Implant** features a high-performance **SLA surface** that maximizes bone-to-implant contact and accelerates osseointegration. Its conical body and sharp dual threads ensure superior primary stability across all bone types, making it ideal for immediate loading. Integrated **platform switching and micro-rings** preserve alveolar bone while enhancing soft tissue volume for natural-looking esthetics. For maximum efficiency, a **single internal hex platform** is used for all diameters to simplify restorations and reduce inventory overhead.



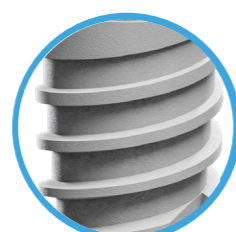
Porous implant offers a solution for a **wide range** of clinical cases.



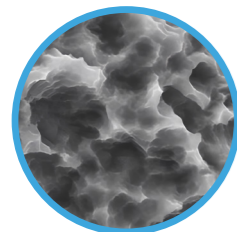
The lower implant body has a **domed apex** to allow safer dental work near sensitive anatomical structures.



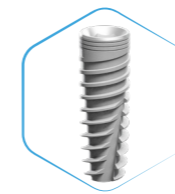
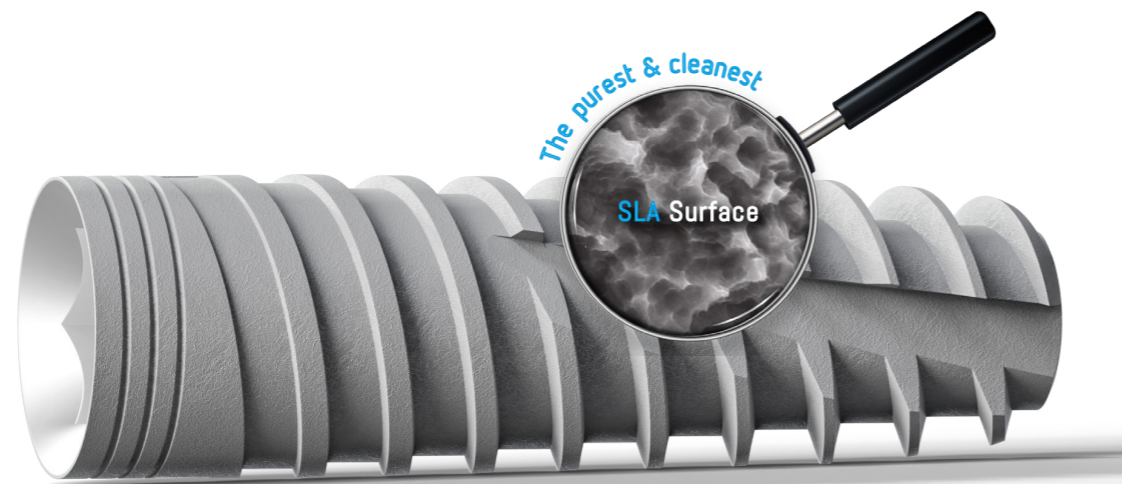
Micro-rings are implemented for **maximal cortical bone preservation**.



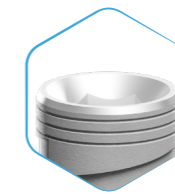
The implant's variable threads accomplish **excellent primary stability**.



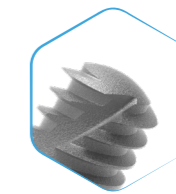
In addition, it has a **highly controlled SLA surface**, which favors successful long-term osseointegration.



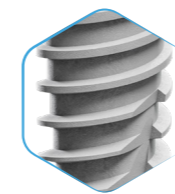
Conical Body



Single Platform



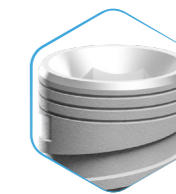
Domed Apex



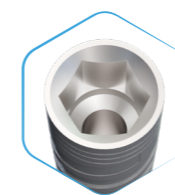
Variable Thread Design



Switching Platform



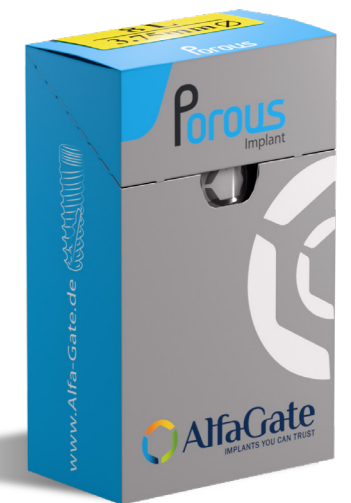
Micro-rings



Internal Hex Connection with Conical Sealing Design

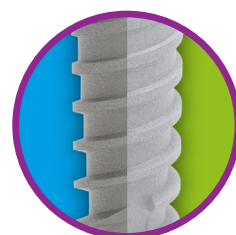
Material:
Item includes:
Connection:
Surface:

Titanium Alloy Ti 6Al 4V ELI
Cover screw and implant carrier
Screw type implant 2.42 mm internal hex
Sand blasting and Acid-etching



Diameter	Length	6mm	8mm	10mm	11.5mm	13mm	16mm	19mm
		Ø 3.3	-	SCIP833	SCIP1033	SCIP11533	SCIP1333	SCIP1633
Ø 3.75	-	-	SCIP8375	SCIP10375	SCIP115375	SCIP13375	SCIP16375	SCIP19375
Ø 4.2	-	SCIP642	SCIP842	SCIP1042	SCIP11542	SCIP1342	SCIP1642	SCIP1942
Ø 4.7	-	SCIP647	SCIP847	SCIP1047	SCIP11547	SCIP1347	SCIP1647	-
Ø 5.2	-	SCIP652	SCIP852	SCIP1052	SCIP11552	SCIP1352	SCIP1652	-
Ø 6.0	-	SCIP66	SCIP86	SCIP106	SCIP1156	SCIP136	-	-

The **S-line Implant** is the ultimate 3.0 mm solution for narrow ridges, specifically engineered to eliminate the need for bone augmentation. Its high-strength design withstands an exceptional fatigue load of 325N, ensuring long-term survival and mechanical reliability. Available in both Bioactive and SLA surfaces, the system supports a full prosthetic range, from CAD-CAM to Multi-Unit restorations.



It is available in two surfaces: the unique Bioactive **CaP hydrophilic surface** and the **SLA surface**.



S-line is the optimal **3.0 mm** diameter implant for narrow and tight ridges.



The complete prosthetic solution for S-line implant includes **CAD/CAM** products.



The implant's connection with its internal screw is specifically designed to accomplish a high fatigue point of **325 Ncm**.



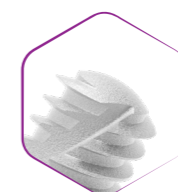
The implant **eliminates** the need for bone augmentation in **narrow ridges**.



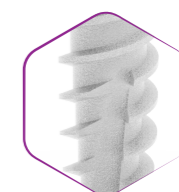
It allows for **all crown restoration** options, such as screw-retained, cemented, ball attachment and Multi-Unit.



Conical Body



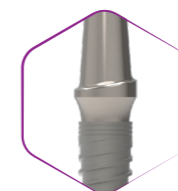
Domed Apex



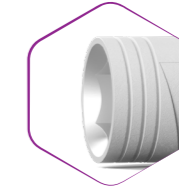
Variable Thread Design



Micro-rings



Switching Platform





Internal Hex Connection with Conical Sealing Design



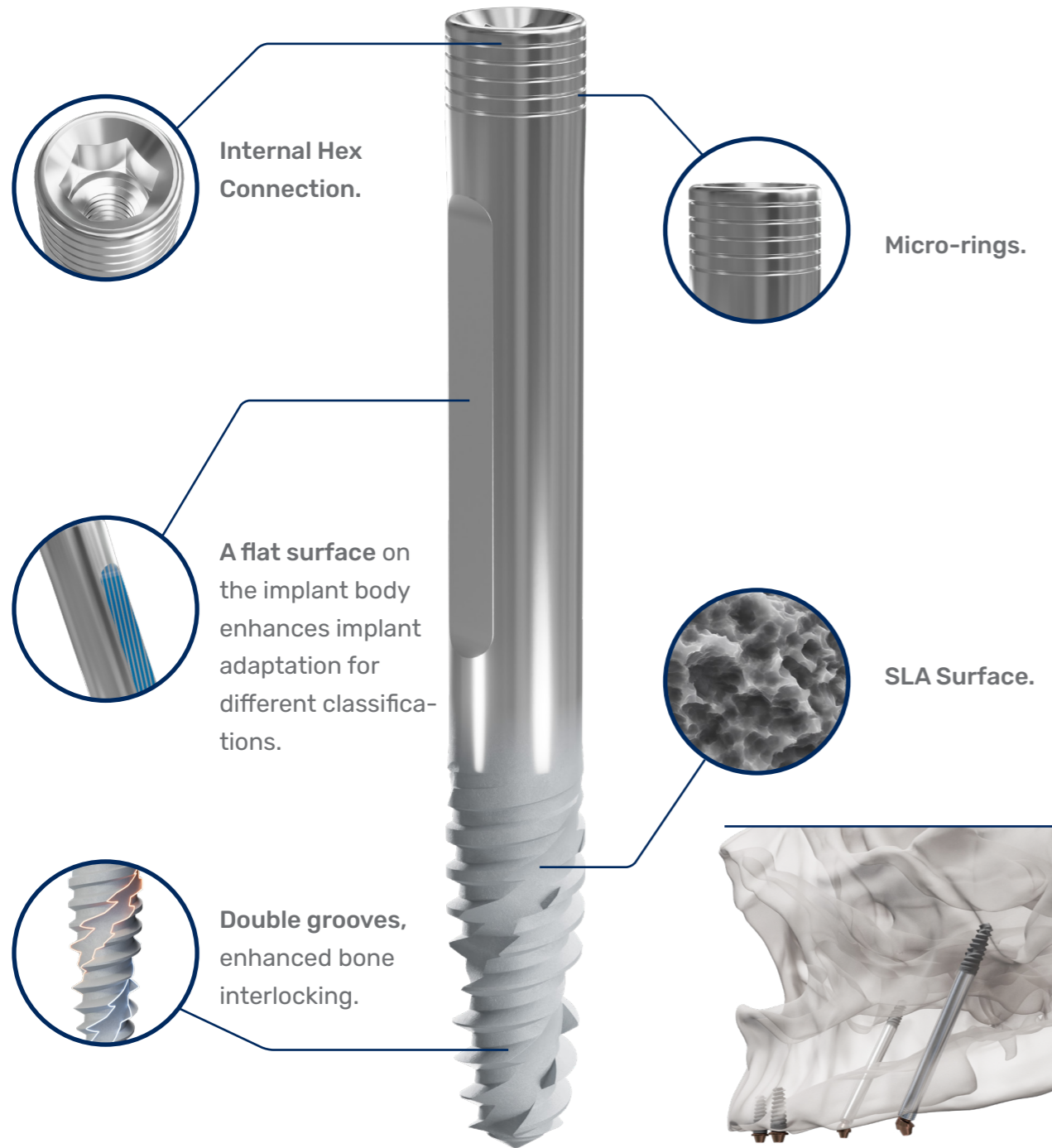
Material: Titanium Alloy Ti 6Al 4V ELI
Item includes: Cover screw and implant carrier
Connection: Screw type implant 2.0 mm internal hex

Titanium Alloy Ti 6Al 4V ELI | **Bioactive Surface-CaP** / **SLA Surface**
Cover screw and implant carrier
Screw type implant 2.0 mm internal hex

Diameter	Length	10mm	11.5mm	13mm	16mm
		 S-L103 S-L1153 S-L133 S-L163 Surface: Bioactive CaP surface Bioactive			
 S-LP103 S-LP1153 S-LP133 S-LP163 surface: Sand blasting and Acid-Etching SLA					

The Zygomatic Implant provides an advanced solution to bypass complex bone grafting, offering a faster treatment process with reduced healing times. Its design features a hexagonal internal connection, a smooth shaft, and a tapered threaded apex to ensure optimal stability in the zygomatic bone.

To enhance patient comfort, the implant includes a unique flat-sided body that alleviates pressure on surrounding soft tissues.

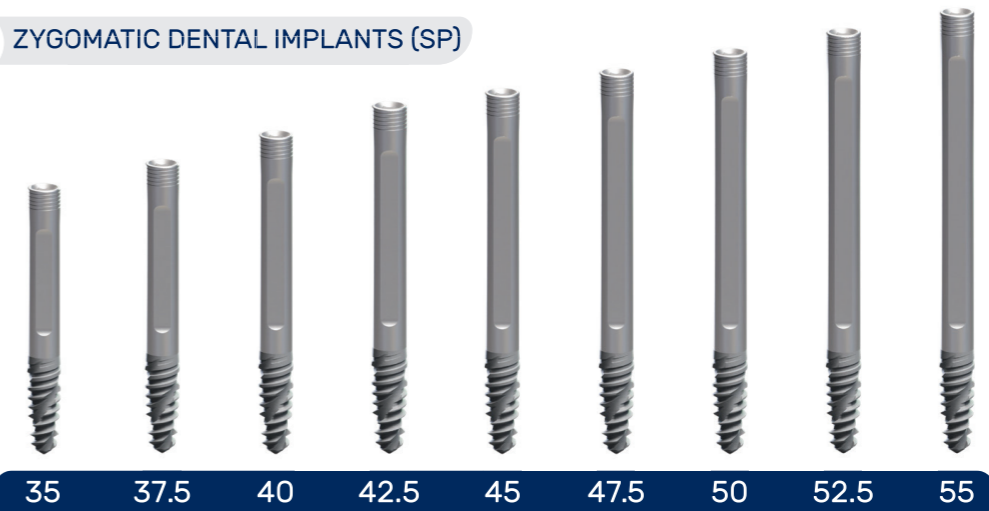


ZYGOMATIC DENTAL IMPLANT

Ø	4.2	4.2	4.2	4.2	4.2
Length	35	37.5	40	42.5	45
Code	AITI3542	AITI3742	AITI4042	AITI4242	AITI4542

Ø	4.2	4.2	4.2	4.2
Length	47.5	50	52.5	55
Code	AITI4742	AITI5042	AITI5242	AITI5542

SP ZYGOMATIC DENTAL IMPLANTS (SP)



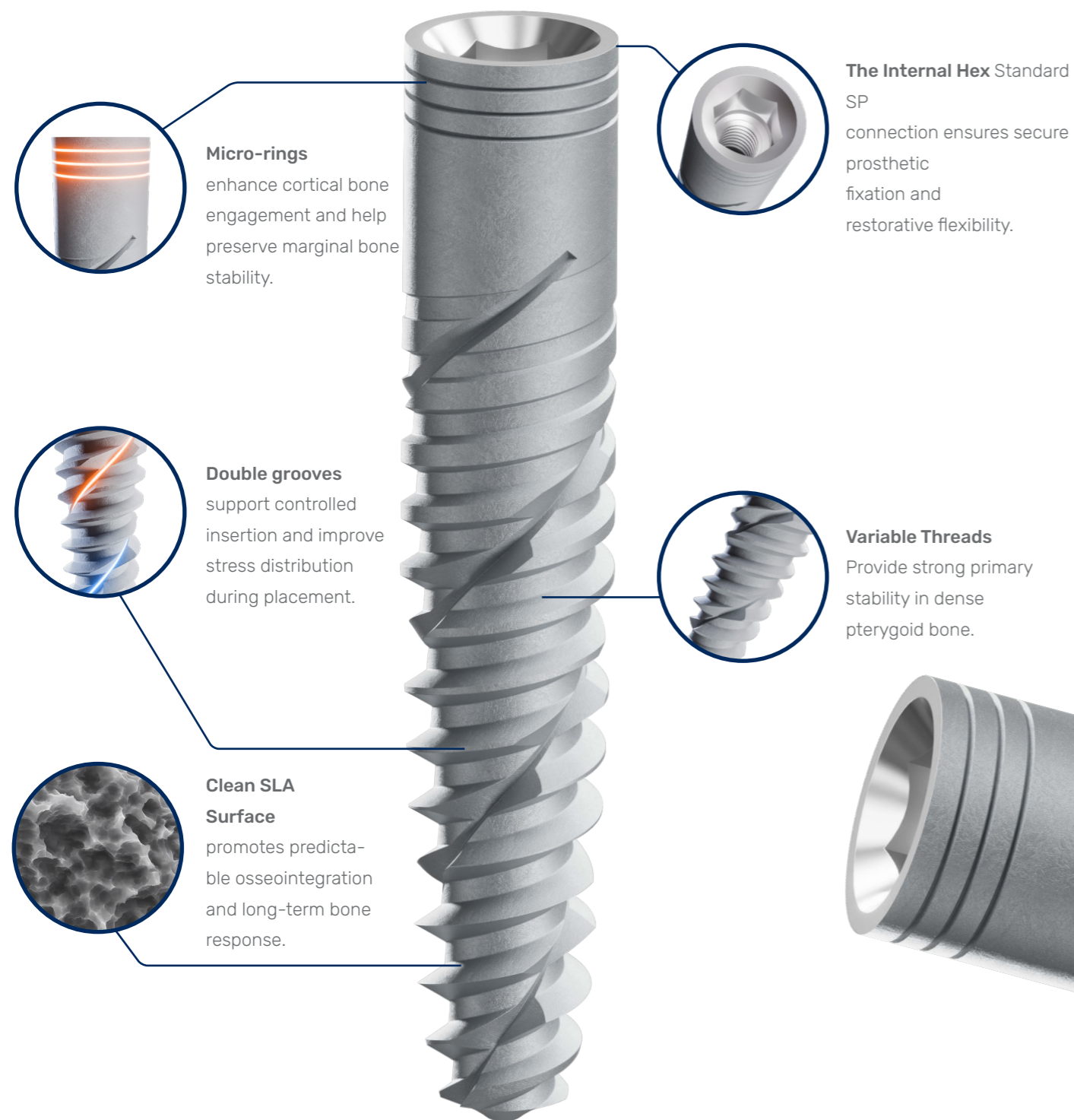
Zygomatic Kit

The Zygomatic Kit Designed to streamline the surgical workflow and ensure maximum safety during implant placement.

For more details, see page 79

PTERYGOID

The Pterygoid Implant is designed for advanced posterior maxillary cases where bone height is limited, offering a solution with a length reaching up to 22 mm to engage dense cortical bone in the pterygoid region and achieve strong primary stability. This extended length allows clinicians to bypass compromised alveolar bone, reduce the need for sinus grafting, and support immediate or early loading protocols.



Domed Apex
allows safer navigation and atraumatic penetration in challenging anatomy.

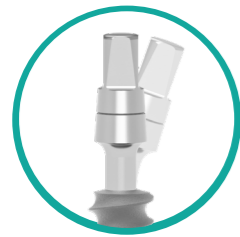
PTERYGOID DENTAL IMPLANT

\emptyset	4.2	4.2	4.2
Length	16	19	22
Code	SCIP1947	SCIP196	SCIP1952

Material: Titanium Alloy Ti 6Al 4V ELI | [SLA Surface](#)
Item includes: Cover screw and implant carrier
Connection: Screw type implant 2.0 mm internal hex



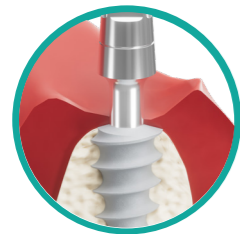
The **Patro Implant** is a unique **one-piece** solution engineered specifically for clinical cases with severely limited vertical bone height. Its standout feature is a **flexible neck** that can be adjusted up to **25°**, allowing for precise angulation and optimal prosthetic alignment. This versatile design ensures high primary stability and streamlines the restorative process by eliminating the need for complex bone augmentation.



Patro offers the perfect solution for a unique one-piece implant with its flexible neck design that reaches **up to 25° angulation**.



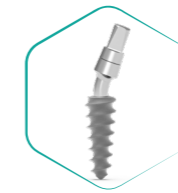
The implant's versatility offers immediate loading in **multiple-unit restorations**.



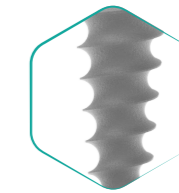
Conveniently it can be placed in the tightest and **narrowest ridges**.



A wide range of diameters from 3.0mm up to the **special 4.7mm**.



Flexible Neck



Sharp and Deep Threads

Material:
Item includes:
Connection:
Surface:

Titanium Alloy Ti 6Al 4V ELI
Implant carrier
One-Piece implant with an integrated abutment
Sand blasting and Acid-etching

Diameter	Length	6mm	8mm	10mm	11.5mm	13mm	16mm
		Ø 3.0	-	-	PTR103	PTR1153	PTR133
Ø 3.3	-	-	PTR833	PTR1033	PTR11533	PTR1333	PTR1633
Ø 3.75	-	PTR6375	PTR8375	PTR10375	PTR115375	PTR13375	PTR16375
Ø 4.2	-	PTR642	PTR842	PTR1042	PTR11542	PTR1342	PTR1642
Ø 4.7	-	PTR647	PTR847	PTR1047	PTR11547	PTR1347	PTR1647

Platform One-Piece

One-Piece Implant Analog

Height mm | 21mm
Ref. | AGM-215

Material: Stainless Steel



Transfer for One-Piece Implant

Height mm | 11mm
Ref. | AGM-306

Material: Plastic

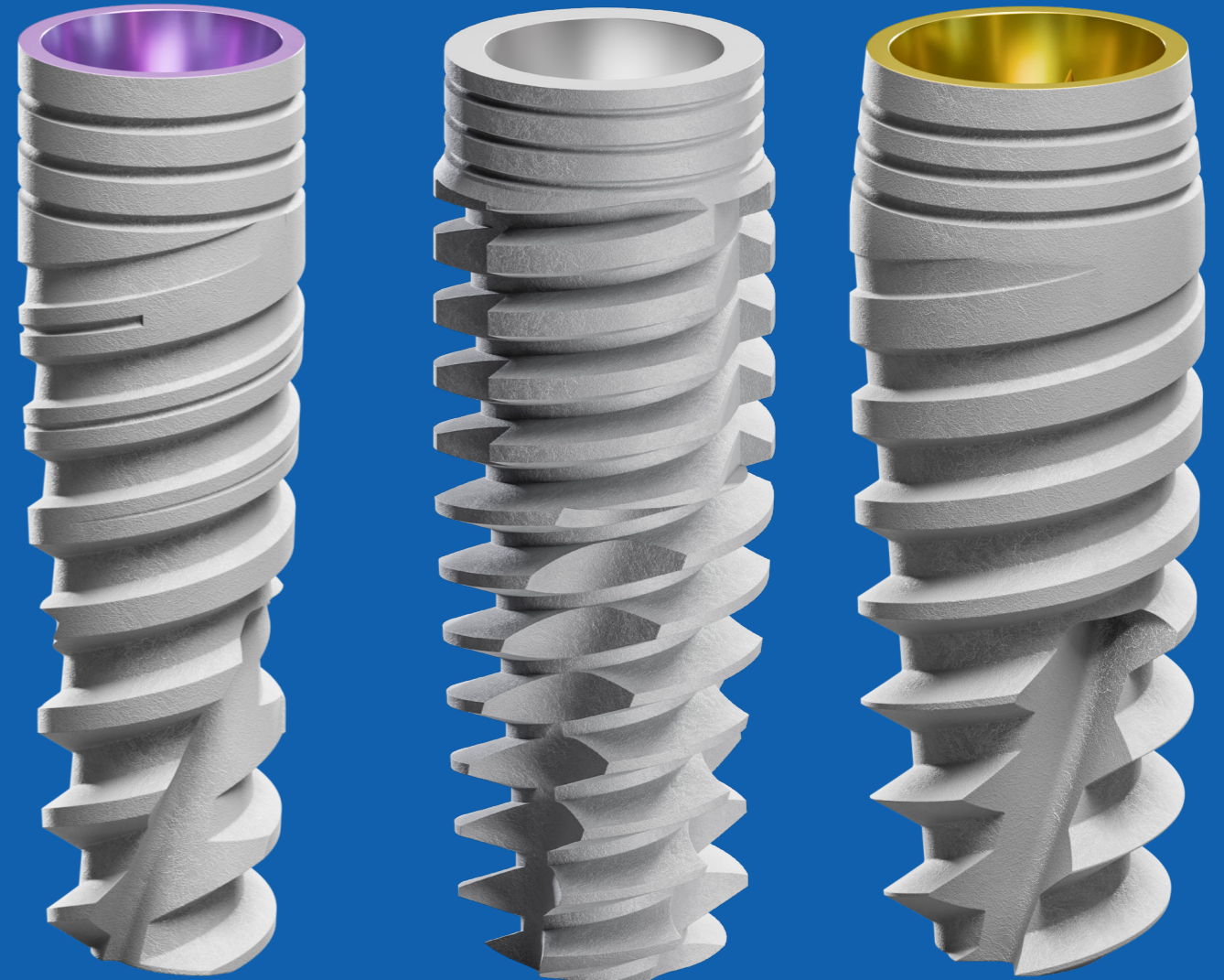


IMPLANTS

CONICAL CONNECTION

M+ RP	28-29
M+ NP	30-31
Trio RC	32-33

The Alfa Gate conical connection range—comprising the M+ NP, M+ RP, and Trio RC—is engineered for superior primary stability and a robust bacterial seal. The M+ models feature a specialized 22° Morse taper, while the Trio RC utilizes an 11° Morse taper, both integrated with hexagonal interlocking for maximum mechanical integrity. This advanced design incorporates a switching platform and a back-tapered neck to preserve cortical bone and enhance long-term aesthetic outcomes.



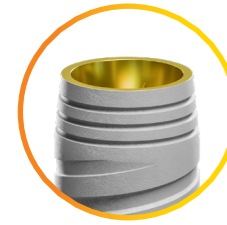
The M+ RP (Regular Platform) is a conical connection implant designed to achieve high primary stability, particularly in soft bone and post-extraction procedures. It features a back-tapered coronal design to maximize cortical bone preservation and a switching platform to enhance aesthetic outcomes.



Switching Platform characteristic achieves optimal esthetic results with minimal effort.



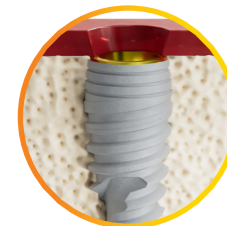
24° Conical Connection.



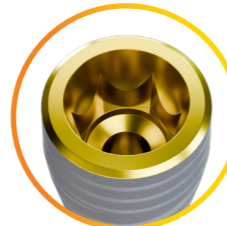
The back tapered coronal body is designed to achieve **maximum cortical bone preservation**.



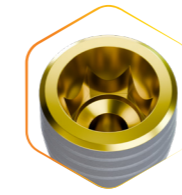
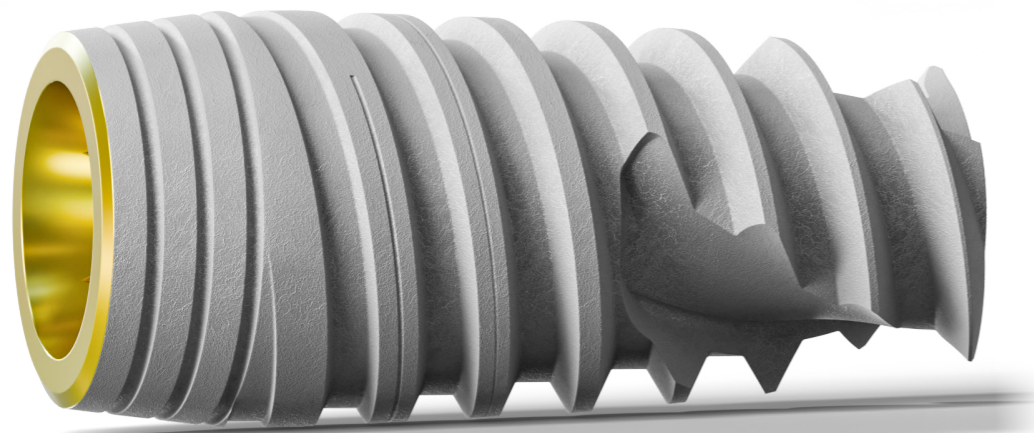
M+ conical connection implant is designed to accomplish **high primary stability**.



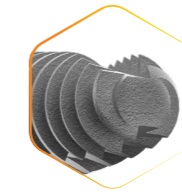
Its special features suit implant placement in **soft bone and post-extraction procedures**.



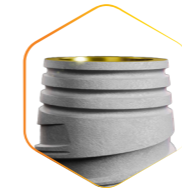
Regular Platform.



Conical Connection with Hexagonal Interlocking



Flat Apex



Back Tapered Coronal Design



Variable Thread Design

- Material:** Titanium Alloy Ti 6Al 4VELI
- Item includes:** Cover screw and implant carrier
- Connection:** Screw type implant conical connection
- Surface:** Sand blasting and Acid-etching
- Platform:** Conical connection



Diameter	Length					
	8mm	10mm	11.5mm	13mm	16mm	
Ø 4.3	SCA843	SCA1043	SCA11543	SCA1343	SCA1643	
Ø 5.0	SCA85	SCA105	SCA1155	SCA135	SCA165	

The M+ NP (Narrow Platform) is a conical connection implant specifically designed to provide high primary stability, particularly in soft bone and post-extraction scenarios. It features a narrow 3.5mm diameter and incorporates a back-tapered coronal body and a switching platform to maximize cortical bone preservation and optimize long-term aesthetic outcomes.



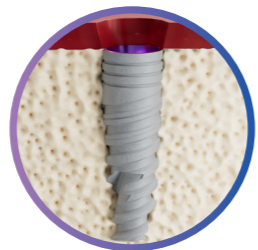
Switching Platform characteristic achieves optimal esthetic results with minimal effort.



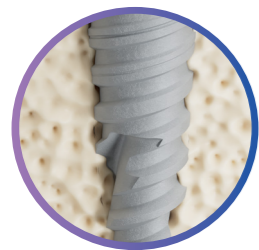
24° Conical connection.



Micro-rings are implemented for maximal cortical bone preservation.



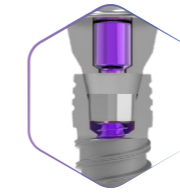
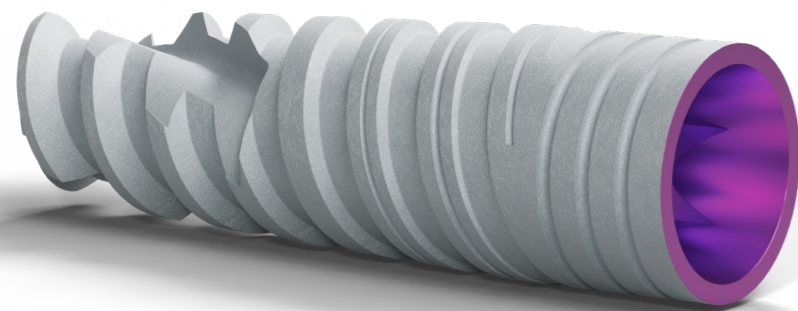
M+ conical connection implant is designed to accomplish high primary stability.



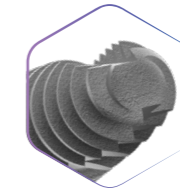
Its special features suit implant placement in soft bone and post-extraction procedures.



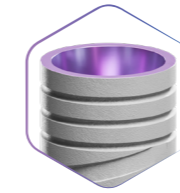
Narrow Platform.



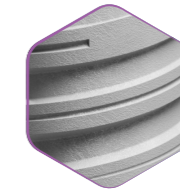
Conical Connection with Hexagonal Interlocking



Flat Apex

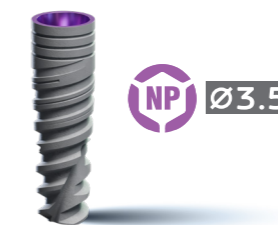


Triple Micro-Rings



Variable Thread Design

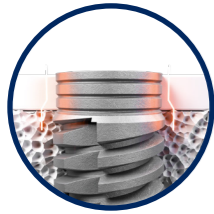
- Material:** Titanium Alloy Ti 6Al 4VELI
- Item includes:** Cover screw and implant carrier
- Connection:** Screw type implant conical connection
- Surface:** Sand blasting and Acid-etching
- Platform:** Conical connection



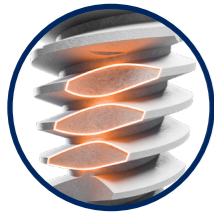
	Length				
Diameter	8mm	10mm	11.5mm	13mm	16mm
Ø 3.5	SCA835	SCA1035	SCA11535	SCA1335	SCA1635



Alfa Gate is proud to present the revolutionary **Trio RC**, an incomparable implant solution engineered for superior primary stability across all bone types. Featuring a high-precision 11° Morse taper conical connection, the Trio RC provides a secure bacterial seal and exceptional mechanical strength. Its advanced design is clinically proven to deliver predictable results and long-term success, making it the ideal choice for even the most demanding surgical cases.



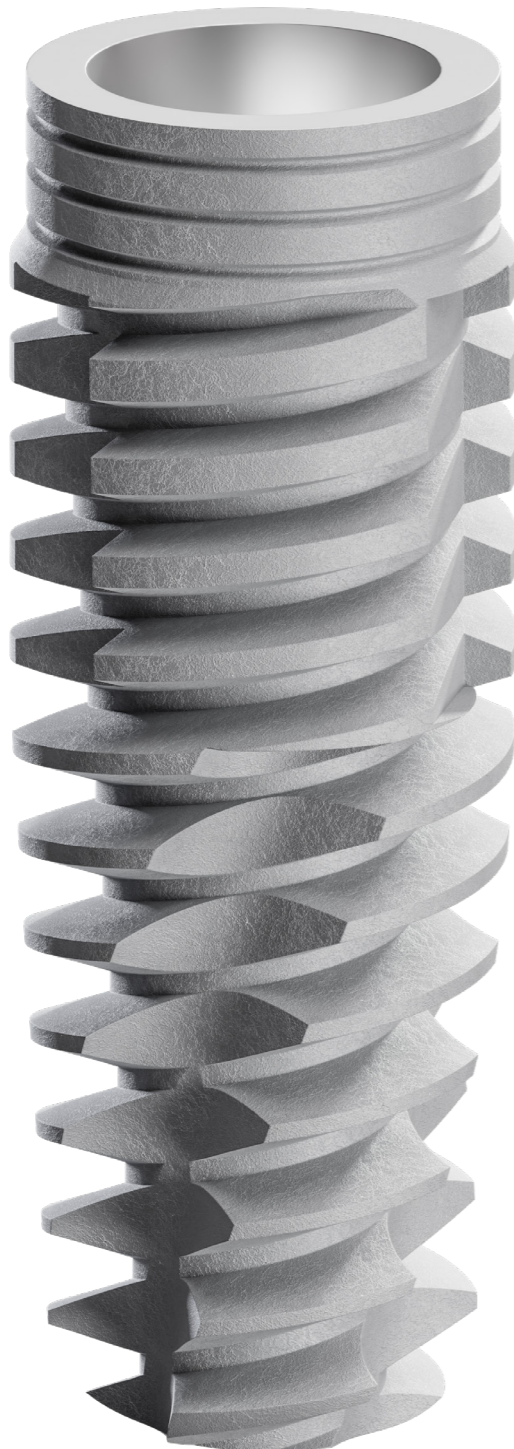
Cortical bone
less stress.
Soft bone
more stability.



Triple Flutes Define Bone Compression
improve distribution of axial forces, defining bone compression.



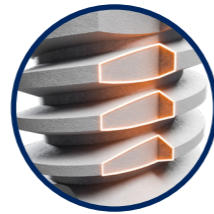
Body and core
optimized force distribution



11° Conical connection.
2.5mm Hex.



Triple Micro Rings
enhance bone formation and increase BIC (Bone implant contact).

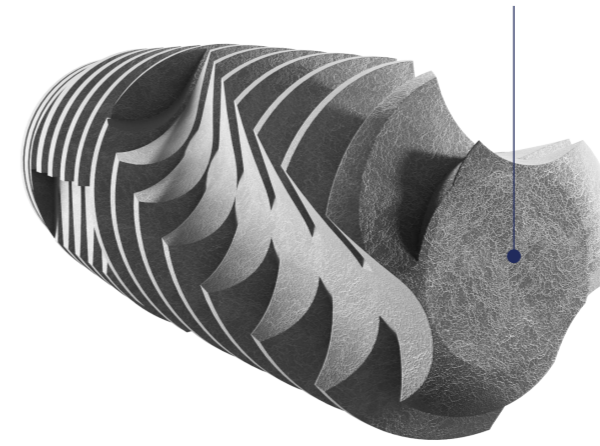



Triple Drilling Grooves
enables cutting through the cortical bone for efficient insertion and torque equalization.

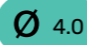




Upper groove shapes the bone to fit seamlessly with the neck.

Flat Active Apex

A cutting flat active apex is ideal for immediate placement

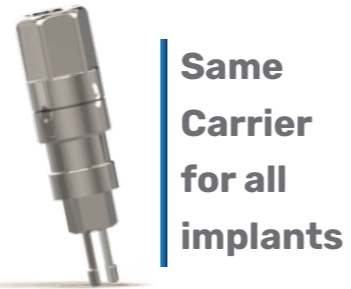


Material: Titanium Alloy Ti 6Al 4V ELI | SLA surface
Item includes: Cover screw and implant carrier
Connection: Screw type implant conical connection
Surface: Sand blasting and Acid-etching
Platform: Regular Conical Platform 

Diameter	Length	8mm	10mm	11.5mm	13mm
		 4.0		DFCIP842	DFCIP1042
 4.5		DFCIP847	DFCIP1047	DFCIP11547	DFCIP1347
 5.0		DFCIP852	DFCIP1052	DFCIP11552	DFCIP1352

HANDLING

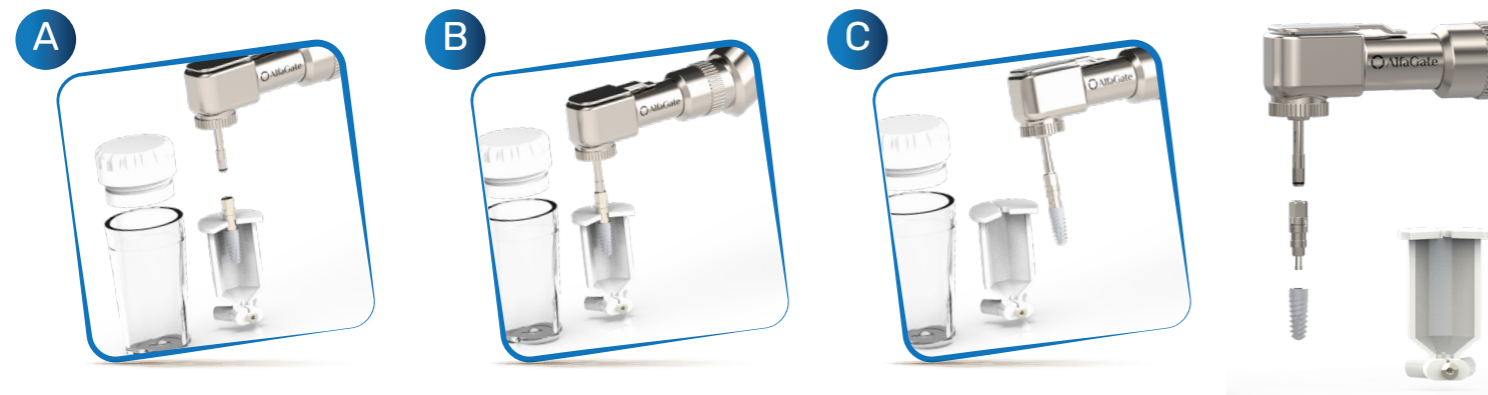
Alfa Gate FIT carrier makes it possible to insert all implants regardless of the platform, with a single set of keys.



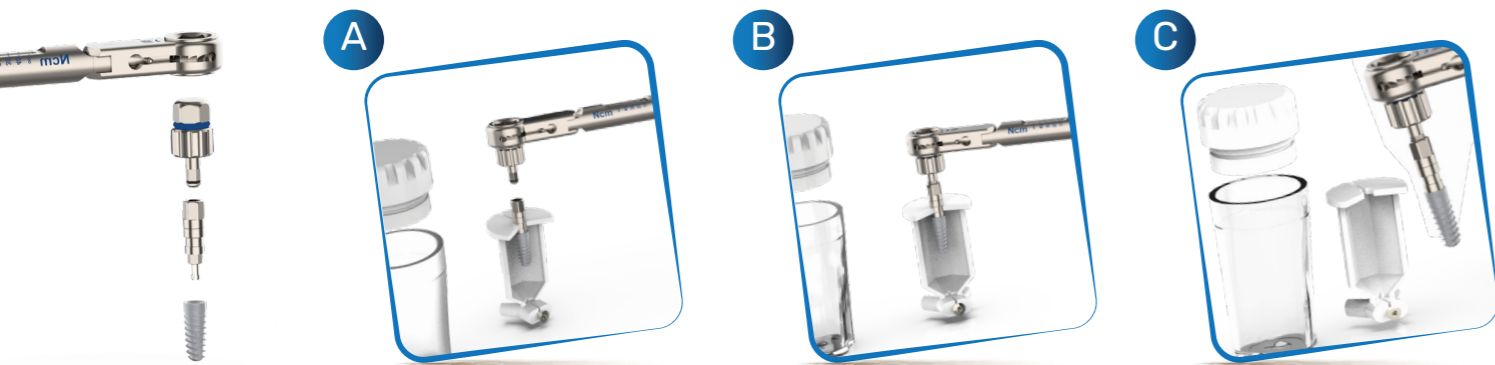
Same Carrier for all implants

The Fit Carrier must be used with torque insertion up to 35 Ncm!

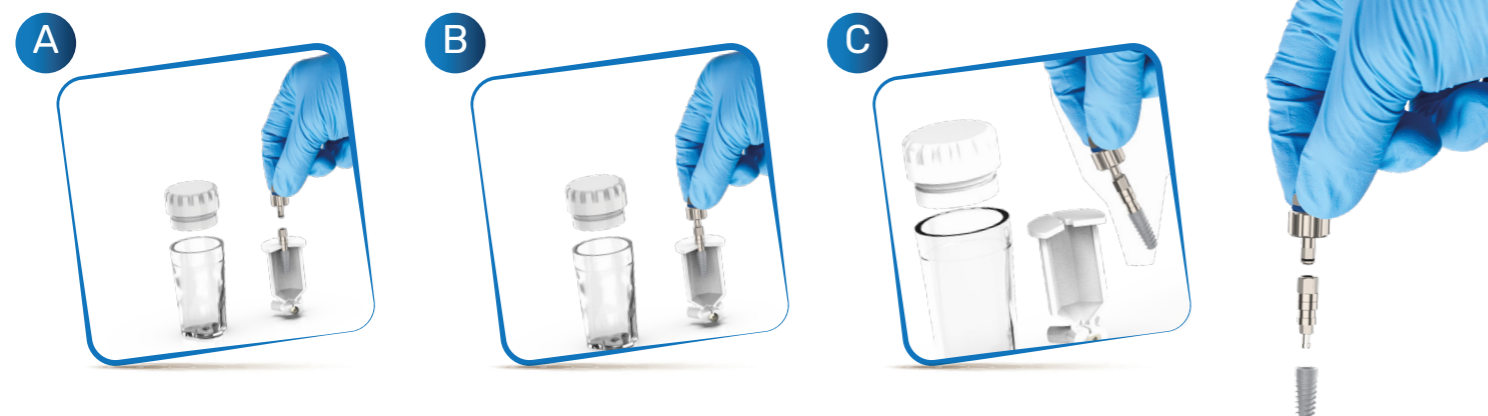
Hand-piece insertion



Ratchet insertion

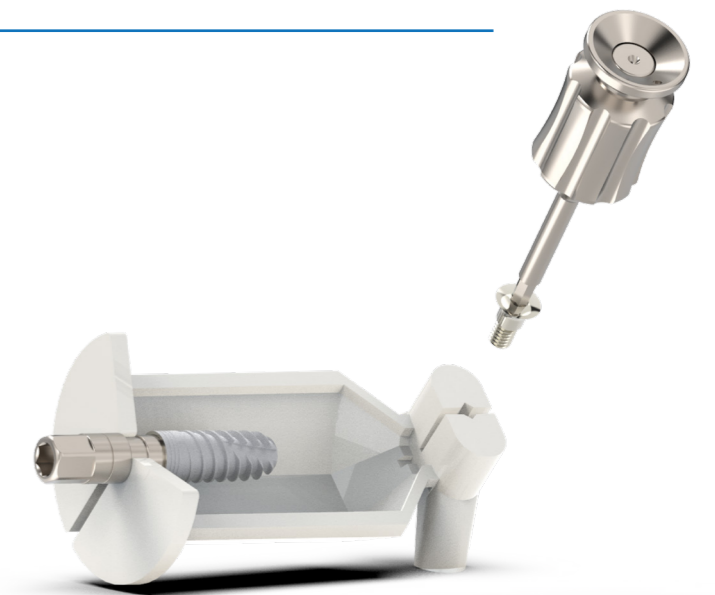


Manual insertion



***The final insertion is done with the matching insertion key!**

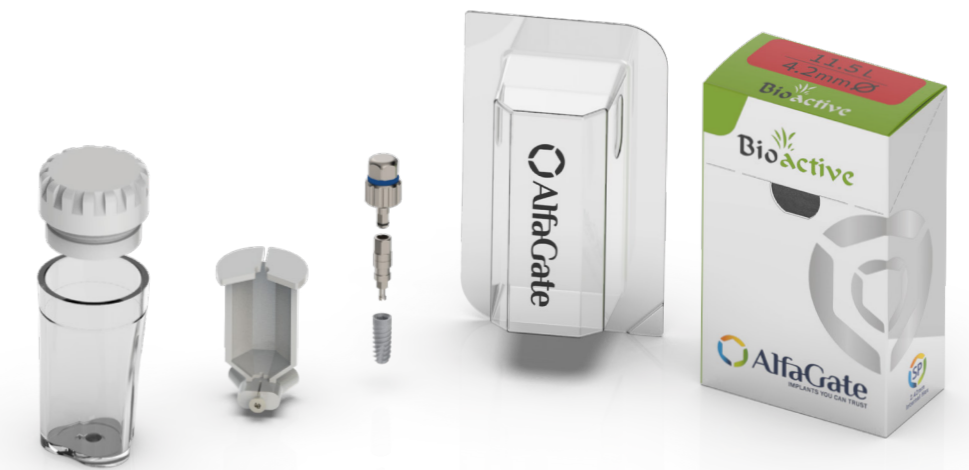
Cover Screw



Anti-slip ring



Packaging



Important: to ensure correct and safe transfer of the implant and optimal insertion, the implant insertion key must be fully inserted into the upper hexagon of the mount.



INTERNAL HEX
PROSTHETICS



S-line PROSTHETIC

Healing Cap Ø3.7mm

Height mm	2mm	3mm	4mm	5mm
Ref.	AGM-203-2S	AGM-203-3S	AGM-203-4S	AGM-203-5S



Additional Info: Recommended torque - manual only light finger tight (5-10 Ncm) using hand driver 1.25 mm.

Material: Titanium

Impression Transfers

Description	for open tray impression	for closed tray impression click connection	for closed tray impression screw connection
Height mm	14mm	9mm	11mm
Ref.	AGM-301-SL	AGM-302-SL	AGM-303-SL



Additional Info: Recommended torque - manual only light finger tight (5-10 Ncm) using hand driver 1.25 mm.

Material: Stainless Steel

Implant Analog

Description	S-line implant analog with internal hex 2.0mm
Height mm	12mm
Ref.	AGM-214-SL



Material: Titanium

Abutments

Description	Straight	15° angulated	Shoulder - 1mm	Shoulder - 2mm	Shoulder - 3mm
Height mm	10mm	11mm	10mm	10mm	10mm
Ref.	AGM-100-S	AGM-115-S	AGM-602-1S	AGM-602-2S	AGM-602-3S



Additional Info: Recommended torque - 20 Ncm.

Material: Titanium

Direct Prosthetic Screw

Description	S-line screw
Height mm	7.7mm
Ref.	AGM-202S

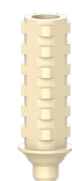


Additional Info: Recommended torque - 20 Ncm.

Material: Titanium

Temporary Abutments

Description	Hex	Non-Hex
Height mm	10mm	10mm
Ref.	AGM-903-SL	AGM-904-SL



Additional Info: Recommended torque - 15 Ncm. - Supplied with prosthetic screw

Material: PEEK

Plastic Abutments for Casting Height 11mm

Description	Hex	Non-Hex
Ref.	AGM-P6	AGM-P5



Additional Info: Recommended torque - 20 Ncm. - Supplied with prosthetic screw.

Material: Plastic

S-line MULTI-UNIT

Straight Multi-Unit

Height mm	1mm	2mm	3mm	4mm	5mm
Ref.	AGM-700-1-S	AGM-700-2-S	AGM-700-3-S	AGM-700-4-S	AGM-700-5-S



17° Angulated Multi-Unit

Height mm	1.5mm
Ref.	AGM-717-1-S



Multi-Unit Prosthetics

Description	Transfer open tray	Analog	Healing Cap
Height mm	22mm	12mm	5mm
Ref.	AGM-508	AGM-507	AGM-509



Additional Info: Recommended torque - 5 Ncm. - Using hex driver 1.25 mm.

Material: Stainless Steel / Titanium

Multi-Unit Prosthetics

Description	Prosthetic screw - 2pcs	Temporary cylinder	Plastic cylinder	Temporary PEEK cylinder
Height mm	4.5mm	12mm	12mm	12mm
Ref.	AGM-506-SC	AGM-505	AGM-506	AGM-512



Additional Info: Recommended torque - manual only light finger tight (5-10 Ncm) using hand driver 1.25 mm.

Material: Titanium / Plastic / Peek

CAD/CAM Prosthetics

Scan Post

Height mm	7mm
Material	PEEK
Ref.	SBMU



Digital Analog

Height mm	10mm
Material	Stainless Steel
Ref.	AD-MU



Non-Engaging Ti-Base

Height mm	0.3mm
Material	Titanium
Ref.	TBMU



Multi-Unit Sets

Description	Straight Multi-Unit				
Height mm	1mm	2mm	3mm	4mm	5mm
Ref.	AGM-700-1-SK	AGM-700-2-SK	AGM-700-3-SK	AGM-700-4-SK	AGM-700-5-SK

17° Angulated Multi-Unit

Height mm	1.5mm
Ref.	AGM-717-1-SK

All Multi-Unit Sets include:

Description	Transfer	Analog	Healing Cap
Ref.	AGM-508	AGM-507	AGM-509
Description	Screw - 2pcs	Temporary cylinder	Plastic cylinder
Ref.	AGM-506-SC	AGM-505	AGM-506



S-line BALL ATTACHMENT

Ball Attachment Ø3.7mm

Height mm	1mm	2mm	3mm	4mm	5mm
Ref.	AGM-105-1S	AGM-105-2S	AGM-105-3S	AGM-105-4S	AGM-105-5S

Additional Info: Recommended torque - 20 Ncm. - Using hex driver 1.25 mm.

Material: Titanium



Ball Attachment Prosthetics

Description	Standard plastic cap	Soft plastic cap	Hard plastic cap	Metal housing	Protective disk
Ref.	AGM-105-P	AGM-105-PS	AGM-105-PH	AGM-105-M	AGM-105-D

Ball Attachment sets

Height mm	1mm	2mm	3mm	4mm	5mm
Ref.	AGM-105-1SK	AGM-105-2SK	AGM-105-3SK	AGM-105-4SK	AGM-105-5SK



All Ball Attachment Sets include:

Description	Standard plastic cap	Soft plastic cap	Hard plastic cap	Metal housing	Protective disk
Ref.	AGM-105-P	AGM-105-PS	AGM-105-PH	AGM-105-M	AGM-105-D

S-line ALFA-LOCK

Alfa-Lock Attachment Ø4.5mm

Height mm	1mm	2mm	3mm	4mm	5mm
Ref.	AGM-106-1S	AGM-106-2S	AGM-106-3S	AGM-106-4S	AGM-106-5S

Additional Info: Recommended torque - 20 Ncm. - Using hex driver 1.25 mm.

Material: Titanium



All Alfa-Lock Prosthetics

Description	Standard plastic cap	Soft plastic cap	Hard plastic cap	Metal housing	Protective disk
Ref.	AGM-106-P	AGM-106-PS	AGM-106-PH	AGM-106-M	AGM-106-D

Alfa-Lock sets

Height mm	1mm	2mm	3mm	4mm	5mm
Ref.	AGM-106-1SK	AGM-106-2SK	AGM-106-3SK	AGM-106-4SK	AGM-106-5SK



All Alfa-Lock Sets include:

Description	Standard plastic cap	Soft plastic cap	Hard plastic cap	Metal housing	Protective disk
Ref.	AGM-106-P	AGM-106-PS	AGM-106-PH	AGM-106-M	AGM-106-D

Scan Post

Height mm	10mm
Material	PEEK
Ref.	SBSL



Digital Analog

Height mm	10mm
Material	Stainless Steel
Ref.	AD-SL



Engaging Ti-Base

Height mm	0.5mm
Material	Titanium
Ref.	TBSL-05



Height mm	1.5mm
Material	Titanium
Ref.	TBSL-15



Height mm	3.0mm
Material	Titanium
Ref.	TBSL-30



Non-Engaging Ti-Base

Height mm	0.5mm
Material	Titanium
Ref.	TBSL-NH-05



Height mm	1.5mm
Material	Titanium
Ref.	TBSL-NH-15



Height mm	3.0mm
Material	Titanium
Ref.	TBSL-NH-30



Scan Body Set

S-LINE PLATFORM I.-MM
-oPCS.



S-line SBSL-I.-K

ALL SCAN BODY SETS
INCLUDE:

HEX DRIVER
1,60MM - (LONG)
AGM-400



Concave Healing Cap Ø4.5mm



Height mm	2mm	3mm	4mm
Ref.	AGM-203-2C	AGM-203-3C	AGM-203-4C

Additional Info: Recommended torque - manual only light finger tight (5-10 Ncm) using hand driver 1.25 mm.
Material: Titanium

Standard Healing Cap Ø4.2mm



Height mm	1mm	2mm	3mm	4mm	5mm	6mm	7mm
Ref.	AGM-203-1	AGM-203-2	AGM-203-3	AGM-203-4	AGM-203-5	AGM-203-6	AGM-203-7

Additional Info: Recommended torque - manual only light finger tight (5-10 Ncm) using hand driver 1.25 mm.
Material: Titanium

Wide Healing Cap Ø5.0mm



Height mm	1mm	2mm	3mm	4mm	5mm	6mm	7mm
Ref.	AGM-203-1W	AGM-203-2W	AGM-203-3W	AGM-203-4W	AGM-203-5W	AGM-203-6W	AGM-203-7W

Additional Info: Recommended torque - manual only light finger tight (5-10 Ncm) using hand driver 1.25 mm.
Material: Titanium

Closed Tray Impression Transfers

Description	with click connection		Concave with click connection		with screw connection	
Height mm	11mm		11mm		8mm	
Ref.	AGM-302		AGM-302-C		AGM-305	
Description	with plastic sleeve		Plastic sleeve - 4pcs			
Height mm	8.5mm		11mm			
Ref.	AGM-304		AGM-304-P			

Additional Info: Recommended torque - manual only light finger tight (5-10 Ncm) using hand driver 1.25 mm.
Material: Stainless Steel

Open Tray Impression Transfers

Description	Open tray transfer		Concave open tray transfer	
Height mm	14mm		14mm	
Ref.	AGM-301		AGM-301-C	

Additional Info: Recommended torque - manual only light finger tight (5-10 Ncm) using hand driver 1.25 mm.
Material: Stainless Steel

Standard Platform Implant Analog

Description	Implant analog	
Height mm	12mm	
Ref.	AGM-214	



Straight Abutments

Description	Short thin	Long thin	Short standard	Standard
Height mm	7mm	10mm	7mm	7mm
Ref.	AGM-104S	AGM-104	AGM-101S	AGM-101

Additional Info: Recommended torque - 25 Ncm.

Material: Titanium

Description	Short wide	Wide	Long base	Long neck
Height mm	7mm	10mm	13mm	15mm
Ref.	AGM-110S	AGM-110	AGM-108	AGM-109

Additional Info: Recommended torque - 25 Ncm.

Material: Titanium

Shoulder Abutments

Description	Shoulder -1mm	Shoulder -2mm	Shoulder 3mm	Shoulder 4mm
Height mm	10mm	11mm	12mm	13mm
Ref.	AGM-602-1	AGM-602-2	AGM-602-3	AGM-602-4

Additional Info: Recommended torque - 25 Ncm.

Material: Titanium

Concave Shoulder Abutments

Description	Shoulder -1mm	Shoulder -2mm	Shoulder -3mm	Shoulder -4mm
Height mm	10mm	11mm	12mm	13mm
Ref.	AGM-101-1C	AGM-101-2C	AGM-101-3C	AGM-101-4C

Additional Info: Recommended torque - 25 Ncm.

Material: Titanium

Esthetic Abutments

Description	Esthetic - 1mm	Esthetic - 2mm	Esthetic - 3mm
Height mm	10mm	11mm	12mm
Ref.	AGM-802-1	AGM-802-2	AGM-802-3

Additional Info: Recommended torque - 25 Ncm.

Material: Titanium

15° Angulated Abutments

Description	15° Thin	15° Short	15° Standard	15° Long
Height mm	9.5mm	7mm	9.5mm	12mm
Ref.	AGM-102T	AGM-102S	AGM-102	AGM-107

Additional Info: Recommended torque - 25 Ncm.

Material: Titanium



15° Angulated Esthetic Abutments

Description	15° Esthetic - 1mm	15° Esthetic - 2mm	15° Esthetic - 3mm
Height mm	10mm	11mm	12mm
Ref.	AGM-102-E1	AGM-102-E2	AGM-102-E3

Additional Info: Recommended torque - 25 Ncm.

Material: Titanium

15° Concave Angulated Esthetic Abutments

Description	15° Concave - 1mm	15° Concave - 2mm	15° Concave - 3mm
Height mm	10mm	11mm	12mm
Ref.	AGM-102-1C	AGM-102-2C	AGM-102-3C

Additional Info: Recommended torque - 25 Ncm.

Material: Titanium

25° Angulated Abutments

Description	25° Short	25° Standard	25° Long
Height mm	7mm	9.5mm	12mm
Ref.	AGM-103S	AGM-103	AGM-111

Additional Info: Recommended torque - 25 Ncm.

Material: Titanium

25° Angulated Esthetic Abutments

Description	25° Esthetic - 1mm	25° Esthetic - 2mm	25° Esthetic - 3mm
Height mm	10mm	11mm	12mm
Ref.	AGM-103-E1	AGM-103-E2	AGM-103-E3

Additional Info: Recommended torque - 25 Ncm.

Material: Titanium

25° Concave Angulated Esthetic Abutments

Description	25° Concave - 1mm	25° Concave - 2mm	25° Concave - 3mm
Height mm	10mm	11mm	12mm
Ref.	AGM-103-1C	AGM-103-2C	AGM-103-3C

Additional Info: Recommended torque - 25 Ncm.

Material: Titanium

35° - 45° Angulated Abutments

Description	35°	45°
Height mm	11mm	11mm
Ref.	AGM-106	AGM-145

Additional Info: Recommended torque - 25 Ncm.

Material: Titanium



UCLA Abutment for Casting

Description	Castable hexed abutment CoCr base
Height mm	16mm
Ref.	UCLA



Direct Prosthetic Screw

Description	Standard platform screw
Height mm	7.7mm
Ref.	AGM-202

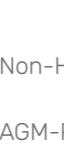


Additional Info: Recommended torque - 25 Ncm.

Material: CoCr / Plastic

Plastic Abutments for Casting Height 11mm

Description	Hex wide profile	Hex sleeve	Non-Hex sleeve
Ref.	AGM-P1	AGM-P3	AGM-P4



Additional Info: Recommended torque - 25 Ncm. - Supplied with prosthetic screw AGM-202

Material: Plastic

Temporary Abutments

Description	Long screw -2pcs	Hex	Non-Hex	Hex	Non-Hex
Height mm	15mm	10mm	10mm	10mm	10mm
Ref.	AGM-900	AGM-901	AGM-902	AGM-903	AGM-904



Additional Info: Recommended torque - 20 Ncm. - Supplied with prosthetic screw AGM-202

Material: Titanium / Peek

Single Unit Ø4.6mm

Height mm	1mm	2mm	3mm
Ref.	AGM-207-1H	AGM-207-2H	AGM-207-3H



Additional Info: Recommended torque - 25 Ncm. Anti rotation anatomic connector used for single unit screw retained restorations.

Material: Titanium

Single Unit Abutments

Description	Transfer open tray	Analog	Healing Cap
Height mm	22mm	9.5mm	3mm
Ref.	AGM-301-H	AGM-214-H	AGM-509-H



Additional Info: Recommended torque - manual only light finger tight (5-10 Ncm) using hand driver 1.25 mm.

Material: Stainless Steel / Titanium

Single Unit Abutments

Description	Screw - 2pcs	Plastic	Temporary
Height mm	4mm	12mm	12mm
Ref.	AGM-207-SCH	AGM-207-PH	AGM-207-PK



Additional Info: Recommended torque - 20 Ncm. - Using hex driver 1.25 mm.

Material: Titanium / Plastic / Peek



Scan Post

Height mm	7mm
Material	PEEK
Ref.	SBH-07



Height mm	10mm
Material	PEEK
Ref.	SBH-10



Digital Analog

Height mm	9mm
Material	Stainless Steel
Ref.	AD-SP



Engaging Ti-Base

Height mm	0.5mm
Material	Titanium
Ref.	TBH-05



Height mm	1.5mm
Material	Titanium
Ref.	TBH-15



Height mm	3.0mm
Material	Titanium
Ref.	TBH-30



Non-Engaging Ti-Base

Height mm	0.5mm
Material	Titanium
Ref.	TBNH-05



Height mm	1.5mm
Material	Titanium
Ref.	TBNH-15



Height mm	3.0mm
Material	Titanium
Ref.	TBNH-30



Engaging Ti-Base Compatible Sirona

Height mm	1.0mm
Material	Titanium
Ref.	TBS



Suggested Workflow:

Scanning:

Scan intraorally or on your model with an Alfa Gate scan post.

Designing:

In the Alfa Gate implant library, select the implant scan post and Ti-Base height.

Design the implant's restoration.

Milling:

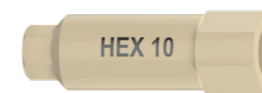
Send the design file to mill your restoration.

Cementation:

Cement the milled restoration on Ti-Base.

Scan Body Set

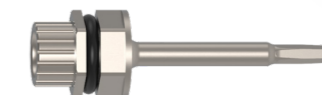
INTERNAL HEX PLATFORM- 1.1MM -0PCS.



ALL SCAN BODY SETS INCLUDE:

HEX DRIVER 1,20MM - (LONG)

AGM-400





MULTI-UNIT

Straight Multi-Unit Ø5.0mm

Height mm	1mm	2mm	3mm	4mm	5mm
Ref.	AGM-700-1	AGM-700-2	AGM-700-3	AGM-700-4	AGM-700-5

Additional Info: Recommended torque - 25 Ncm. - Using hex driver 1.25 mm.

Material: Titanium



17° Angulated Multi-Unit Ø5.0mm

Height mm	1mm	2mm	3mm
Ref.	AGM-717-1	AGM-717-2	AGM-717-3

Additional Info: Recommended torque - 25 Ncm. - Using hex driver 1.25 mm.

Material: Titanium



30° Angulated Multi-Unit Ø5.0mm

Height mm	1mm	2mm	3mm
Ref.	AGM-730-1	AGM-730-2	AGM-730-3

Additional Info: Recommended torque - 25 Ncm. - Using hex driver 1.25 mm.

Material: Titanium



45° Angulated Multi-Unit Ø5.0mm

Height mm	1mm
Ref.	AGM-745-1

Additional Info: Recommended torque - 25 Ncm. - Using hex driver 1.25 mm.

Material: Titanium



Multi-Unit Prosthetics

Description	Transfer open tray	Analog	Healing Cap
Height mm	22mm	12mm	5mm
Ref.	AGM-508	AGM-507	AGM-509

Additional Info: Recommended torque - 5 Ncm. - Using hex driver 1.25 mm.

Material: Stainless Steel / Titanium



Multi-Unit Prosthetics

Description	Prosthetic screw - 2pcs	Temporary cylinder	Plastic cylinder	Temporary PEEK cylinder
Height mm	4.5mm	12mm	12mm	12mm
Ref.	AGM-506-SC	AGM-505	AGM-506	AGM-512

Additional Info: Recommended torque - manual only light finger tight (5-10 Ncm) using hand driver 1.25 mm.

Material: Titanium / Plastic / Peek



Multi-Unit CAD/CAM

Scan Post

Height mm	7mm
Material	PEEK
Ref.	SBMU



Digital Analog

Height mm	9mm
Material	Stainless Steel
Ref.	AD-MU



Non-Engaging Ti-Base

Height mm	0.3mm
Material	Titanium
Ref.	TBMU



MULTI-UNIT SETS

Straight Multi-Unit

Height mm	1mm	2mm	3mm	4mm	5mm
Ref.	AGM-700-1-K	AGM-700-2-K	AGM-700-3-K	AGM-700-4-K	AGM-700-5-K

17° Angulated Multi-Unit

Height mm	1mm	2mm	3mm
Ref.	AGM-717-1-K	AGM-717-2-K	AGM-717-3-K

30° Angulated Multi-Unit

Height mm	1mm	2mm	3mm
Ref.	AGM-730-1-K	AGM-730-2-K	AGM-730-3-K

45° Angulated Multi-Unit

Height mm	1mm
Ref.	AGM-745-1-K



All Multi-Unit Sets include:

Description	Transfer	Analog	Healing Cap
Ref.	AGM-508	AGM-507	AGM-509

Description	Screw - 2pcs	Temporary cylinder	Plastic cylinder
Ref.	AGM-506-SC	AGM-505	AGM-506

Multi-Unit Scan body sets

MULTI-UNIT PLATFORM-10MM -5PCS.

ALL SCAN BODY SETS INCLUDE:



HEX DRIVER 1.25MM - (LONG) AGM-400





BALL ATTACHMENT

Standard Ball Attachment Ø4.2mm

Height mm	0.5mm	1mm	2mm	3mm	4mm	5mm	6mm	7mm
Ref.	AGM-105-0.5	AGM-105-1	AGM-105-2	AGM-105-3	AGM-105-4	AGM-105-5	AGM-105-6	AGM-105-7



Additional Info: Recommended torque - 25 Ncm. - Using hex driver 1.25 mm.

Material: Titanium

Concave Ball Attachment Ø4.2mm

Height mm	1mm	2mm	3mm	4mm
Ref.	AGM-105-1C	AGM-105-2C	AGM-105-3C	AGM-105-4C



Additional Info: Recommended torque - 25 Ncm. - Using hex driver 1.25 mm.

Material: Titanium

Angulated Multi Base Height 1.5mm

Description	Multi base 17°	Multi base 30°
Ref.	AGM-501	AGM-502



Additional Info: Recommended torque - 25 Ncm. - Using hex driver 1.25 mm.

Material: Titanium

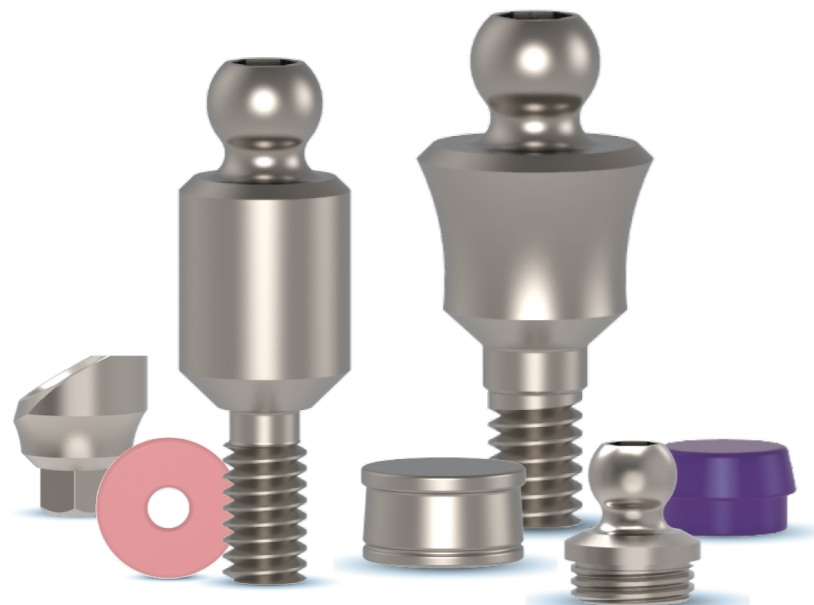
Ball Attachment for Multi Base

Height mm	1mm	2mm	3mm
Ref.	AGM-504-1	AGM-504-2	AGM-504-3



Additional Info: Recommended torque - 25 Ncm. - Using hex driver 1.25 mm.

Material: Titanium



BALL ATTACHMENT SETS

Height mm	1mm	2mm	3mm	4mm	5mm	6mm	7mm
Ref.	AGM-105-1K	AGM-105-2K	AGM-105-3K	AGM-105-4K	AGM-105-5K	AGM-105-6K	AGM-105-7K

All Ball Attachment Sets include:

Description	Standard plastic cap	Soft plastic cap
Ref.	AGM-105-P	AGM-105-PS
Hard plastic cap	Metal housing	Protective disk
AGM-105-PH	AGM-105-M	AGM-105-D



Ball Attachment Replacement Set

Ref. AGM-105-1T

All Ball Attachment Sets include:

Description	Standard plastic cap	Soft plastic cap
Ref.	AGM-105-P	AGM-105-PS
Hard plastic cap	Metal housing	Protective disk
AGM-105-PH	AGM-105-M	AGM-105-D





Alfa-Lock Attachment Ø4.5mm

Height mm	1mm	2mm	3mm	4mm	5mm
Ref.	AGM-106-1	AGM-106-2	AGM-106-3	AGM-106-4	AGM-106-5



Additional Info: Recommended torque - 25 Ncm. - Using hex driver 1.25 mm.

Material: Titanium

Plastic Cap for Alfa-Lock

Description	Standard	Soft	Hard
Ref.	AGM-106-P	AGM-106-PS	AGM-106-PH



Additional Info: Used for all types of Alfa-Lock

Material: Plastic

Metal Housing and Protective Disk

Description	Metal housing	Protective disk
Height mm	2.8mm	0.5mm
Ref.	AGM-106-M	AGM-106-D



Additional Info: Used for all types of Alfa Lock

Material: Stainless Steel / Plastic

Angulated Multi Base Height 1.5mm

Description	Multi base 17°	Multi base 30°
Ref.	AGM-501	AGM-502



Additional Info: Recommended torque - 25 Ncm. - Using hex driver 1.25 mm.

Material: Titanium

Alfa-Lock for Multi Base Ø4.5mm

Height mm	1mm	2mm	3mm
Ref.	AGM-510-1	AGM-510-2	AGM-510-3



Additional Info: Recommended torque - 25 Ncm. - Using hex driver 1.25 mm.

Material: Titanium



Alfa-Lock Sets

Height mm	1mm	2mm	3mm	4mm	5mm
Ref.	AGM-106-1K	AGM-106-2K	AGM-106-3K	AGM-106-4K	AGM-106-5K

All Alfa-Lock Sets include:

Description	Standard plastic cap	Soft plastic cap
Ref.	AGM-106-P	AGM-106-PS
Hard plastic cap	Metal housing	Protective disk
AGM-106-PH	AGM-106-M	AGM-106-D



Alfa-Lock Replacement Set

Ref. AGM-106-1T

All Alfa-Lock Sets include:

Description	Standard plastic cap	Soft plastic cap
Ref.	AGM-106-P	AGM-106-PS
Hard plastic cap	Metal housing	Protective disk
AGM-106-PH	AGM-106-M	AGM-106-D



Alfa-Lock Multi Tool:

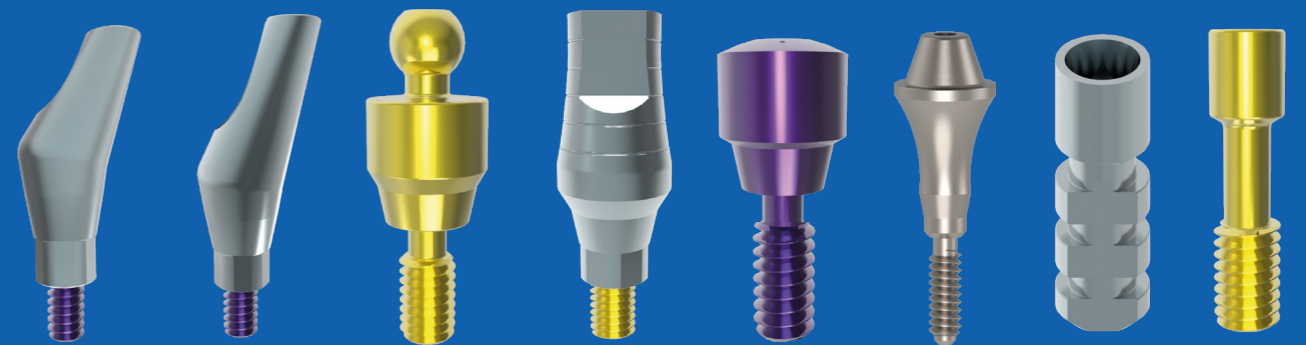
Ref. IT-AL

For Insertion/ Extraction Plastic caps.





CONICAL CONNECTION PROSTHETICS





Healing Cap Ø3.7mm - RP

Height mm	2mm	3mm	4mm	5mm
Ref.	HCC-2-RP	HCC-3-RP	HCC-4-RP	HCC-5-RP



Additional Info: Recommended torque - manual only light finger tight (5-10 Ncm) using hand driver 1.25 mm.
Material: Titanium

Implant Transfer - RP

Description	Open tray implant transfer	Click implant transfer
Height mm	14mm	11mm
Ref.	ITC-RP	ITK-RP



Additional Info: Recommended torque - manual only light finger tight (5-10 Ncm) using hand driver 1.25 mm.
Material: Stainless Steel

Implant Analog - RP

Height mm	13mm
Ref.	ANC-RP



Material: Titanium

Direct Prosthetic Screw

Height mm	7.7mm
Ref.	AGM-202-NP



Additional Info: Recommended torque - 20 Ncm.
Material: Titanium

Temporary Abutment -RP

Description	Hex	Non-Hex
Height mm	10mm	10mm
Ref.	AGM-903-RP	AGM-904-RP



Additional Info: Recommended torque - 15 Ncm. - Supplied with prosthetic screw
Material: PEEK

Plastic Abutments for Casting

Description	Hex	Non-Hex
Height mm	10mm	10mm
Ref.	AGM-P3-RP	AGM-P4-RP



Additional Info: Recommended torque - 20 Ncm. - Supplied with prosthetic screw.
Material: Plastic

Straight Abutments - RP

Height mm	9mm	13mm
Ref.	SSAC-9-RP	SSAC-13-RP



Additional Info: Recommended torque - 25 Ncm.
Material: Titanium

Anatomic Straight Abutments - RP

Height mm	1mm	2mm	3mm	4mm
Ref.	ASAC-1-RP	ASAC-2-RP	ASAC-3-RP	ASAC-4-RP



Additional Info: Recommended torque - 25 Ncm.
Material: Titanium



15° Angulated Abutments - RP

Height mm	9mm	12mm
Ref.	AAC-159-RP	AAC-1512-RP



Additional Info: Recommended torque - 25 Ncm.
Material: Titanium

15° Anatomic Angulated Abutments - RP

Height mm	1mm	2mm	3mm
Ref.	AAA151-RP	AAA152-RP	AAA153-RP



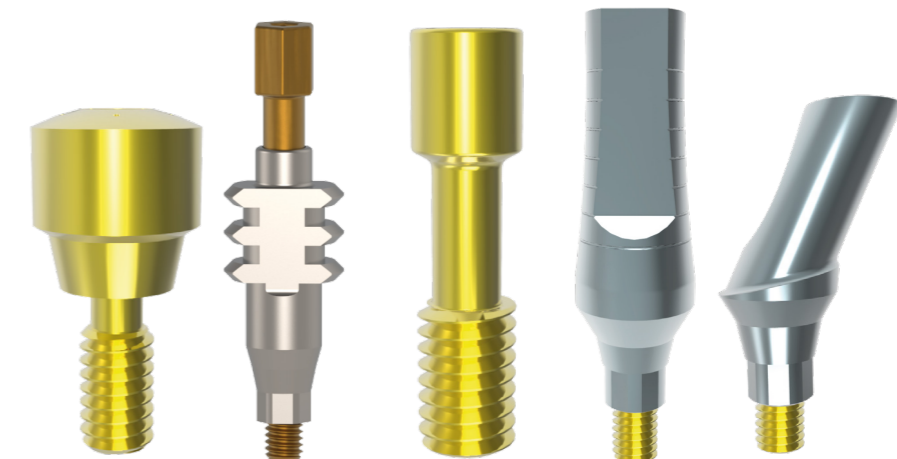
Additional Info: Recommended torque - 25 Ncm.
Material: Titanium

25° Anatomic Angulated Abutments - RP

Height mm	1mm	2mm	3mm
Ref.	AAA251-RP	AAA252-RP	AAA253-RP



Additional Info: Recommended torque - 25 Ncm.
Material: Titanium





MULTI-UNIT

Straight Multi-Unit -RP

Height mm	1mm	2mm	3mm	4mm	5mm
Ref.	AGM-700-1-RP	AGM-700-2-RP	AGM-700-3-RP	AGM-700-4-RP	AGM-700-5-RP

Additional Info: Recommended torque - 25 Ncm.- Using hex driver 1.25 mm.

Material: Titanium



17° Angulated Multi-Unit - RP

Height mm	1.5mm
Ref.	AGM-717-1-RP

Additional Info: Recommended torque - 25 Ncm.

Material: Titanium



30° Angulated Multi-Unit - RP

Height mm	1.5mm
Ref.	AGM-730-1-RP

Additional Info: Recommended torque - 25 Ncm.

Material: Titanium



Multi-Unit Prosthetics

Description	Transfer open tray	Analog	Healing Cap
Height mm	22mm	12mm	5mm
Ref.	AGM-508	AGM-507	AGM-509

Additional Info: Recommended torque - 25 Ncm.

Material: Stainless Steel / Titanium

Description	Prosthetic screw - 2pcs	Temporary cylinder	Plastic cylinder	Temporary PEEK cylinder
Height mm	4.5mm	12mm	12mm	12mm
Ref.	AGM-506-SC	AGM-505	AGM-506	AGM-512

Additional Info: Recommended torque - 25 Ncm.

Material: Titanium / Plastic / Peek

All Multi-Unit Sets include:

Description	Transfer	Analog	Healing Cap
Ref.	AGM-508	AGM-507	AGM-509
Description	Screw - 2pcs	Temporary cylinder	Plastic cylinder
Ref.	AGM-506-SC	AGM-505	AGM-506

Additional Info: Recommended torque - 25 Ncm.

Material: Stainless Steel.



CAD/CAM Prosthetics

Digital Analog

10mm	
Stainless Steel	
AD-MU	

Non-Engaging Ti-Base

0.3mm	
Titanium	
TBMU	

Multi-Unit Sets

Description	Straight Multi-Unit				
Height mm	1mm	2mm	3mm	4mm	5mm
Ref.	AGM-700-1-RPK	AGM-700-2-RPK	AGM-700-3-RPK	AGM-700-4-RPK	AGM-700-5-RPK

Description	17° Angulated Multi-Unit	30° Angulated Multi-Unit
Height mm	1.5mm	1.5mm
Ref.	AGM-717-1-RPK	AGM-730-1-RPK



CAD/CAM

Scan Post

Height mm	10mm
Material	PEEK
Ref.	SBRP-10



Digital Analog

Height mm	9mm
Material	Stainless Steel
Ref.	AD-RP



Engaging Ti-Base

Height mm	0.5mm
Material	Titanium
Ref.	TBRP-05



1.5mm	
Titanium	
TBRP-15	



3.0mm	
Titanium	
TBRP-30	



Non-Engaging Ti-Base

Height mm	0.5mm
Material	Titanium
Ref.	TBRP-NH-05



1.5mm	
Titanium	
TBRP-NH-15	



3.0mm	
Titanium	
TBRP-NH-30	



Additional Info: Recommended torque - 25 Ncm.

Material: Titanium

Suggested Workflow:

Scanning:

Scan intraorally or on your model with an Alfa Gate scan post.

Designing:

In the Alfa Gate implant library, select the implant scan post and Ti-Base height.

Design the implant's restoration.

Milling:

Send the design file to mill your restoration.

Cementation:

Cement the milled restoration on Ti-Base.

Scan Body Set

RP CONICAL PLATFORM - 1.MM-øPCS.



SBRP-1.-K

ALL SCAN BODY SETS

INCLUDE:

HEX DRIVER
1,2øMM - (LONG)

AGM-400





BALL ATTACHMENT

Ball Attachment






Height mm	1mm	2mm	3mm	4mm	5mm
Ref.	BAC-1-RP	BAC-2-RP	BAC-3-RP	BAC-4-RP	BAC-5-RP



Additional Info: Recommended torque - 20 Ncm. - Using hex driver 1.25 mm.

Material: Titanium

Ball Attachment Prosthetics

Description	Standard plastic cap	Soft plastic cap
Ref.	AGM-105-P 	AGM-105-PS 
Hard plastic cap	Metal housing	Protective disk
AGM-105-PH 	AGM-105-M 	AGM-105-D 

Ball Attachment sets

Height mm	1mm	2mm	3mm	4mm	5mm
Ref.	BAC-1-RPK	BAC-2-RPK	BAC-3-RPK	BAC-4-RPK	BAC-5-RPK



All Ball Attachment Sets include:

Description	Standard plastic cap	Soft plastic cap	Hard plastic cap	Metal housing	Protective disk
Ref.	AGM-105-P	AGM-105-PS	AGM-105-PH	AGM-105-M	AGM-105-D



ALFA-LOCK

Alfa-Lock Attachment






Height mm	1mm	2mm	3mm	4mm	5mm
Ref.	AGM-106-1RP	AGM-106-2RP	AGM-106-3RP	AGM-106-4RP	AGM-106-5RP



Additional Info: Recommended torque - 20 Ncm. - Using hex driver 1.25 mm.

Material: Titanium

All Alfa-Lock Prosthetics

Description	Standard plastic cap	Soft plastic cap
Ref.	AGM-106-P 	AGM-106-PS 
Hard plastic cap	Metal housing	Protective disk
AGM-106-PH 	AGM-106-M 	AGM-106-D 

**Alfa-Lock can be sold separately.*

Alfa-Lock sets

Height mm	1mm	2mm	3mm	4mm	5mm
Ref.	AGM-106-1RPK	AGM-106-2RPK	AGM-106-3RPK	AGM-106-4RPK	AGM-106-5RPK



All Alfa-Lock Sets include:

Description	Standard plastic cap	Soft plastic cap	Hard plastic cap	Metal housing	Protective disk
Ref.	AGM-106-P	AGM-106-PS	AGM-106-PH	AGM-106-M	AGM-106-D



Healing Cap Ø3.7mm - NP

Height mm	2mm	3mm	4mm	5mm
Ref.	HCC-2-NP	HCC-3-NP	HCC-4-NP	HCC-5-NP



Additional Info: Recommended torque - manual only light finger tight (5-10 Ncm) using hand driver 1.25 mm.
Material: Titanium

Implant Transfer - NP

Description	for open tray impression	Click implant transfer
Height mm	14mm	11mm
Ref.	ITC-NP	ITK-NP



Additional Info: Recommended torque - manual only light finger tight (5-10 Ncm) using hand driver 1.25 mm.
Material: Stainless Steel

Implant Analog - NP

Height mm	13mm
Ref.	ANC-NP



Material: Titanium

Direct Prosthetic Screw

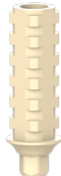
Height mm	7.7mm
Ref.	AGM-202-NP



Additional Info: Recommended torque - 20 Ncm.
Material: Titanium

Temporary Abutment - NP

Description	Hex	Non-Hex
Height mm	10mm	10mm
Ref.	AGM-903-NP	AGM-904-NP



Additional Info: Recommended torque - 15 Ncm. - Supplied with prosthetic screw
Material: PEEK

Plastic Abutments for Casting

Description	Hex	Non-Hex
Ref.	AGM-P3-NP	AGM-P4-NP



Additional Info: Recommended torque - 20 Ncm. - Supplied with prosthetic screw.
Material: Plastic

Straight Abutments - NP

Height mm	9mm	13mm
Ref.	SSAC-9-NP	SSAC-13-NP



Additional Info: Recommended torque - 25 Ncm.
Material: Titanium

Anatomic Straight Abutments - NP

Height mm	1mm	2mm	3mm	4mm
Ref.	ASAC-1-NP	ASAC-2-NP	ASAC-3-NP	ASAC-4-NP



Additional Info: Recommended torque - 25 Ncm.
Material: Titanium



15° Angulated Abutments - NP

Height mm	9mm	12mm
Ref.	AAC-159-NP	AAC-1512-NP



Additional Info: Recommended torque - 25 Ncm.
Material: Titanium

15° Anatomic Angulated Abutments - NP

Height mm	1mm	2mm	3mm
Ref.	AAA151-NP	AAA152-NP	AAA153-NP



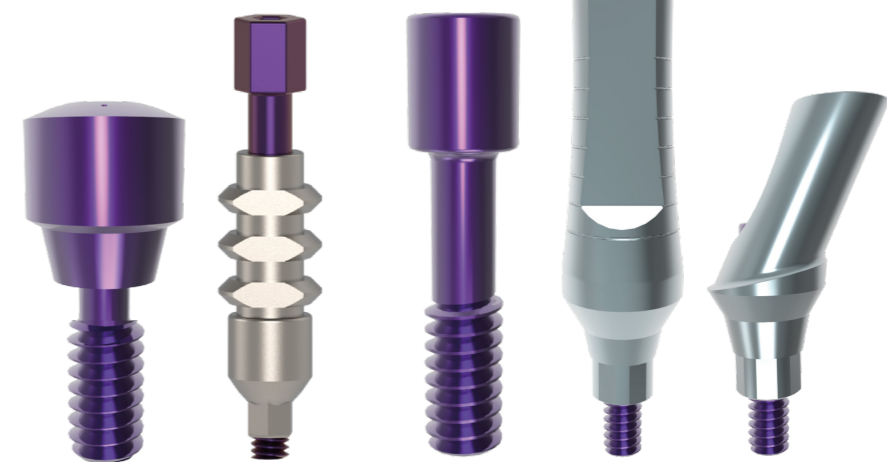
Additional Info: Recommended torque - 25 Ncm.
Material: Titanium

25° Anatomic Angulated Abutments - NP

Height mm	1mm	2mm	3mm
Ref.	AAA251-NP	AAA252-NP	AAA253-NP



Additional Info: Recommended torque - 25 Ncm.
Material: Titanium





Scan Post

Height mm	10mm
Material	PEEK
Ref.	SBNP-10



Digital Analog

Height mm	9mm
Material	Stainless Steel
Ref.	AD-NP



Engaging Ti-Base

Height mm	0.5mm
Material	Titanium
Ref.	TBNP-05



1.5mm
Titanium
TBNP-15



3.0mm
Titanium
TBNP-30



Non-Engaging Ti-Base

Height mm	0.5mm
Material	Titanium
Ref.	TBNP-NH-05



1.5mm
Titanium
TBNP-NH-15



3.0mm
Titanium
TBNP-NH-30



Additional Info: Recommended torque - 25 Ncm.

Material: Titanium

Suggested Workflow:

Scanning:

Scan intraorally or on your model with an Alfa Gate scan post.

Designing:

In the Alfa Gate implant library, select the implant scan post and Ti-Base height.

Design the implant's restoration.

Milling:

Send the design file to mill your restoration.

Cementation:

Cement the milled restoration on Ti-Base.

Scan Body Set

NP Conical Platform-10mm5-Pcs.



NP SBNP-10-K

All Scan Body Sets include:

Hex driver
1.25mm - (Long)
AGM-400



Ball Attachment Ø3.7mm

Height mm	1mm	2mm	3mm	4mm	5mm
Ref.	BAC-1-NP	BAC-2-NP	BAC-3-NP	BAC-4-NP	BAC-5-NP



Additional Info: Recommended torque - 20 Ncm. - Using hex driver 1.25 mm.

Material: Titanium

Ball Attachment Prosthetics

Description	Standard plastic cap	Soft plastic cap
Ref.	AGM-105-P	AGM-105-PS

Hard plastic cap	Metal housing	Protective disk
AGM-105-PH	AGM-105-M	AGM-105-D

Ball Attachment sets

Height mm	1mm	2mm	3mm	4mm	5mm
Ref.	BAC-1-NPK	BAC-2-NPK	BAC-3-NPK	BAC-4-NPK	BAC-5-NPK



All Ball Attachment Sets include:

Description	Standard plastic cap	Soft plastic cap	Hard plastic cap	Metal housing	Protective disk
Ref.	AGM-105-P	AGM-105-PS	AGM-105-PH	AGM-105-M	AGM-105-D



Alfa-Lock Attachment

Height mm	1mm	2mm	3mm	4mm	5mm
Ref.	AGM-106-1NP	AGM-106-2NP	AGM-106-3NP	AGM-106-4NP	AGM-106-5NP

Additional Info: Recommended torque - 20 Ncm. - Using hex driver 1.25 mm.

Material: Titanium



All Alfa-Lock Prosthetics

Description	Standard plastic cap	Soft plastic cap	Hard plastic cap	Metal housing	Protective disk
Ref.	AGM-106-P	AGM-106-PS	AGM-106-PH	AGM-106-M	AGM-106-D

*Alfa-Lock can be sold separately.

Alfa-Lock sets

Height mm	1mm	2mm	3mm	4mm	5mm
Ref.	AGM-106-1NPK	AGM-106-2NPK	AGM-106-3NPK	AGM-106-4NPK	AGM-106-5NPK



All Alfa-Lock Sets include:

Description	Standard plastic cap	Soft plastic cap	Hard plastic cap	Metal housing	Protective disk
Ref.	AGM-106-P	AGM-106-PS	AGM-106-PH	AGM-106-M	AGM-106-D



Healing Cap Ø4.5mm

Height mm	3mm	4mm	5mm	6mm	7mm
Ref.	AGM-203-3-RC	AGM-203-4-RC	AGM-203-5-RC	AGM-203-6-RC	AGM-203-7-RC

Additional Info: Recommended torque - manual only light finger tight (5-10 Ncm) using hand driver 1.25 mm.
Material: Titanium

Wide Healing Cap Ø4.5mm

Height mm	3mm	4mm	5mm	6mm	7mm
Ref.	AGM-203-3W-RC	AGM-203-4W-RC	AGM-203-5W-RC	AGM-203-6W-RC	AGM-203-7W-RC

Additional Info: Recommended torque - manual only light finger tight (5-10 Ncm) using hand driver 1.25 mm.
Material: Titanium

Implant Transfer

Description	open tray	Close Tray
Ref.	AGM-301-RC	AGM-305-RC

Additional Info: Recommended torque - manual only light finger tight (5-10 Ncm) using hand driver 1.25 mm.
Material: Stainless Steel

Implant Analog

Height mm	13mm
Ref.	AGM-214-RC

Material: Stainless Steel

Direct Prosthetic Screw

Height mm	13mm
Ref.	AGM-202-RC

Additional Info: Recommended torque - 25 Ncm.
Material: Titanium

Temporary Abutment -NP

Description	Hex	Non-Hex
Height mm	10mm	10mm
Ref.	AGM-903-RC	AGM-904-RC

Additional Info: Recommended torque - 20 Ncm.
Material: PEEK



Anatomic Straight Abutments

Height mm	1mm	2mm	3mm	4mm
Ref.	AGM-101-1RC	AGM-101-2RC	AGM-101-3RC	AGM-101-4RC

Additional Info: Recommended torque - 25 Ncm.
Material: Titanium

15° Anatomic Angulated Abutments

Height mm	1mm	2mm	3mm
Ref.	AGM-102-1RC	AGM-102-2RC	AGM-102-3RC

Additional Info: Recommended torque - 25 Ncm.
Material: Titanium

25° Anatomic Angulated Abutments

Height mm	1mm	2mm	3mm
Ref.	AGM-103-E1-RC	AGM-103-E2-RC	AGM-103-E3-RC

Additional Info: Recommended torque - 25 Ncm.
Material: Titanium





MULTI-UNIT

Straight Multi-Unit

Height mm	1mm	2mm	3mm	4mm	5mm
Ref.	AGM-700-1-RC	AGM-700-2-RC	AGM-700-3-RC	AGM-700-4-RC	AGM-700-5-RC

Additional Info: Recommended torque - 25 Ncm.

Material: Titanium

17° Angulated Multi-Unit

Height mm	1mm	3mm
Ref.	AGM-717-1-RC	AGM-717-3-RC

Additional Info: Recommended torque - 25 Ncm.

Material: Titanium

30° Angulated Multi-Unit

Height mm	1mm	3mm
Ref.	AGM-730-1-RC	AGM-730-3-RC

Additional Info: Recommended torque - 25 Ncm.

Material: Titanium

Multi-Unit Prosthetics

Description	Transfer open tray	Analog	Healing Cap
Height mm	22mm	12mm	5mm
Ref.	AGM-508	AGM-507	AGM-509

Additional Info: Recommended torque - 25 Ncm.

Material: Stainless Steel / Titanium

Description	Prosthetic screw - 2pcs	Temporary cylinder	Plastic cylinder	Temporary PEEK cylinder
Height mm	4.5mm	12mm	12mm	12mm
Ref.	AGM-506-SC	AGM-505	AGM-506	AGM-512

Additional Info: Recommended torque - 25 Ncm.

Material: Titanium / Plastic / Peek

CAD/CAM Prosthetics

Scan Post

Height mm	7mm
Material	PEEK
Ref.	SBMU

Digital Analog

Height mm	10mm
Material	Stainless Steel
Ref.	AD-MU

Non-Engaging Ti-Base

Height mm	0.3mm
Material	Titanium
Ref.	TBMU

Additional Info: Recommended torque - 25 Ncm.

Material: Stainless Steel / Peek



MULTI-UNIT SETS

Straight Multi-Unit Set

Height mm	1mm	2mm	3mm	4mm	5mm
Ref.	AGM-700-1-RCK	AGM-700-2-RCK	AGM-700-3-RCK	AGM-700-4-RCK	AGM-700-5-RCK

Additional Info: Recommended torque - 25 Ncm. - Using hex driver 1.25 mm.

Material: Titanium

17° Angulated Multi-Unit Set

Height mm	1mm	3mm
Ref.	AGM-717-1-RC	AGM-717-3-RC

Additional Info: Recommended torque - 25 Ncm.

Material: Titanium

30° Angulated Multi-Unit Set

Height mm	1mm	3mm
Ref.	AGM-730-1-RC	AGM-730-3-RC

Additional Info: Recommended torque - 25 Ncm.

Material: Titanium

Multi-Unit Sets

Description	Straight Multi-Unit Set				
Height mm	1mm	2mm	3mm	4mm	5mm
Ref.	AGM-700-1-RCK	AGM-700-2-RCK	AGM-700-3-RCK	AGM-700-4-RCK	AGM-700-5-RCK

Description	17° Angulated Multi-Unit		30° Angulated Multi-Unit	
Height mm	1mm	3mm	1mm	3mm
Ref.	AGM-717-1-RCK	AGM-717-3-RCK	AGM-730-1-RCK	AGM-730-3-RCK



All Multi-Unit Sets include:

Description	Transfer	Analog	Healing Cap
Ref.	AGM-508	AGM-507	AGM-509

Description	Screw - 2pcs	Temporary cylinder	Plastic cylinder
Ref.	AGM-506-SC	AGM-505	AGM-506

Additional Info: Recommended torque - 25 Ncm.

Material: Stainless Steel.



Scan Post

Height mm	10mm
Material	PEEK
Ref.	SBRC-10



Digital Analog

Height mm	9mm
Material	Stainless Steel
Ref.	AD-RC



Engaging Ti-Base

Height mm	0.5mm
Material	Titanium
Ref.	TBH-05-RC



Height mm	1.5mm
Material	Titanium
Ref.	TBH-15-RC



Height mm	3.0mm
Material	Titanium
Ref.	TBH-30-RC



Additional Info: Recommended torque - 25 Ncm.

Material: Titanium

Non-Engaging Ti-Base

Height mm	0.5mm
Material	Titanium
Ref.	TBNH-05-RC



Height mm	1.5mm
Material	Titanium
Ref.	TBNH-15-RC



Height mm	3.0mm
Material	Titanium
Ref.	TBNH-30-RC



Additional Info: Recommended torque - 25 Ncm.

Material: Titanium

Suggested Workflow:

Scanning:

Scan intraorally or on your model with an Alfa Gate scan post.

Designing:

In the Alfa Gate implant library, select the implant scan post and Ti-Base height. Design the implant's restoration.

Milling:

Send the design file to mill your restoration.

Cementation:

Cement the milled restoration on Ti-Base.



Alfa-Lock Attachment

Height mm	1mm	2mm	3mm	4mm	5mm
Ref.	AGM-106-1RC	AGM-106-2RC	AGM-106-3RC	AGM-106-4RC	AGM-106-5RC

Additional Info: Recommended torque - 20 Ncm. - Using hex driver 1.25 mm.

Material: Titanium



All Alfa-Lock Prosthetics

Description	Standard plastic cap	Soft plastic cap
Ref.	AGM-106-P	AGM-106-PS

Hard plastic cap	Metal housing	Protective disk
AGM-106-PH	AGM-106-M	AGM-106-D

*Alfa-Lock can be sold separately.



Alfa-Lock set For RC Connection

Height mm	1mm	2mm	3mm	4mm	5mm
Ref.	AGM-106-1RCK	AGM-106-2RCK	AGM-106-3RCK	AGM-106-4RCK	AGM-106-5RCK

Alfa-Lock Replacement Set

Ref. AGM-106-1T

All Alfa-Lock Sets include:

Description	Standard plastic cap	Soft plastic cap
Ref.	AGM-106-P	AGM-106-PS

Hard plastic cap	Metal housing	Protective disk
AGM-106-PH	AGM-106-M	AGM-106-D



Alfa-Lock Multi Tool:

Ref. IT-AL

For Insertion/ Extraction Plastic caps.



All Alfa-Lock Sets include:

Description	Standard plastic cap	Soft plastic cap	Hard plastic cap	Metal housing	Protective disk
Ref.	AGM-106-P	AGM-106-PS	AGM-106-PH	AGM-106-M	AGM-106-D

SURGICAL KITS & INSTRUMENTS

Kits	76-83
Instruments & Tools	84-86
Surgical Drills	87
Alfa Bone	88
Alfa Motor	89
Alfa Guide	90-93

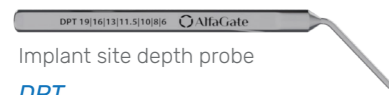


SURGICAL KITS

Advanced Kit

The Alfa Gate **Advanced Kit**, a comprehensive system of high-performance instruments designed for seamless compatibility across all our implant platforms. This versatile kit features precision-engineered stopper sleeves that integrate with surgical drills to provide absolute depth control, ensuring superior accuracy, safety, and consistent implant placement in every clinical scenario.

Kit includes:



Implant site depth probe

DPT

Implant Insertion Tools:



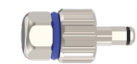
Handpiece 2.5mm (Long)

HAL



Handpiece 2.5mm (Short)

HAS



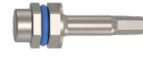
Hand/Ratchet

ITUS



2.5mm (Long)

IT2.5



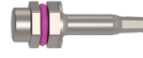
2.5mm (Short)

ITS2.5



S-line 2.0mm (Long)

IT2



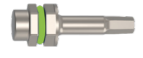
S-line 2.0mm (Short)

ITS2



RC 2.0mm (Long)

IT-RC



RC 2.0mm (Short)

ITS-RC



One-Piece (Long)

ITSL



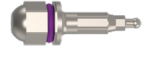
One-Piece (Short)

ITSLS



NP (Long)

IT-NP



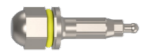
NP (Short)

ITS-NP



RP (Long)

IT-RP



RP (Short)

ITS-RP

Drill stoppers:



Torque wrench

TW

Tools:



Drill extender

DE



Parallel pin x4

PP

Prosthetic Drivers Hex:



Long

AGM-400



Short

AGM-400-S



Hand

AGM-400-R



Handpiece

HB

Drills:



DM



DB2.0



DB2.0-2.8



DB2.8-3.2



DB3.2-3.65



DB3.65-4.2



DB4.2-4.6



DB4.6-5.2



Advanced Kit

Ref. SKTEX

Premium Kit

The Alfa Gate **Premium Kit** is an elite instrumentation system built to handle even the most complex clinical cases with ease. The kit features 25 precision-engineered, built-in stopper drills that provide simple and absolute depth control throughout the drilling process. For enhanced procedural flexibility, it also includes a complete range of standard drills to ensure a seamless workflow for all hands-free surgical applications.

Kit includes:

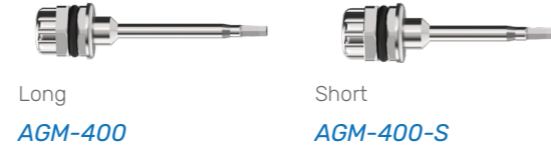
Tools:



Parallel pin x2
PP

Ratchet wrench
RW

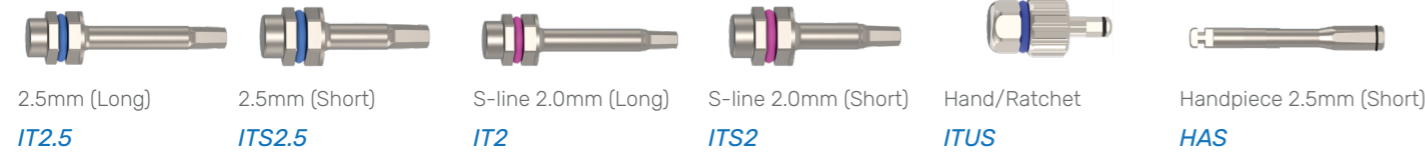
Prosthetic Drivers Hex 1.25mm:



Long
AGM-400

Short
AGM-400-S

Implant Insertion Tools:



2.5mm (Long)
IT2.5

2.5mm (Short)
ITS2.5

S-line 2.0mm (Long)
IT2

S-line 2.0mm (Short)
ITS2

Hand/Ratchet
ITUS

Handpiece 2.5mm (Short)
HAS

Drills:



DM

D2.0

D2.8

D3.2

D3.65

D4.2

Stopper Drills:



02-L13mm *02.8-L13mm* *03.2-L13mm*

02-L11.5mm *02.8-L11.5mm* *03.2-L11.5mm*

02-L10mm *02.8-L10mm* *03.2-L10mm*

02-L8mm *02.8-L8mm* *03.2-L8mm*

02-L6mm *02.8-L6mm* *03.2-L6mm*

03.65-L13mm *04.2-L13mm*

03.65-L11.5mm *04.2-L11.5mm*

03.65-L10mm *04.2-L10mm*

03.65-L8mm *04.2-L8mm*

03.65-L6mm *04.2-L6mm*



Premium Kit

Ref. SPKTM

Prime Kit

The Alfa Gate **Prime Kit** is one of our most impressive and compact surgical solutions, meticulously designed to include all the essential instruments a surgeon needs for optimal clinical results. This streamlined and highly portable kit offers a convenient, accurate layout that simplifies the surgical workflow while maintaining the uncompromising precision required for successful implant placement.

Kit includes:



Ratchet wrench

RW

Implant Insertion Tools:

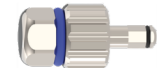


Handpiece 2.5mm (Long)

HAL

Handpiece 2.5mm (Short)

HAS



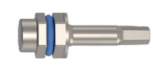
Hand/Ratchet

ITUS



2.5mm (Long)

IT2.5



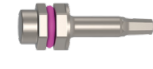
2.5mm (Short)

ITS2.5



S-line 2.0mm (Long)

IT2



S-line 2.0mm (Short)

ITS2

Prosthetic Drivers Hex 1.25mm:



Long

AGM-400



Short

AGM-400-S



Hand

AGM-400-R



Handpiece

HB

Tools:



Drill extender

DE



Parallel pin x3

PP



Ref. BSKT

Drills:



DM



DP2



D2.8



D3.2



D3.65



D4.2



D4.6

Zygomatic Kit

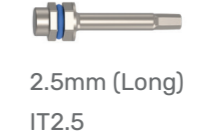


Ref. ZSKT

Drills

1. Initial Drill
2. Point Drill
3. Side Cutter
4. S 2.0/2.5/3.0
5. S 2.8/3.2
6. S 3.2/3.7
7. L 2.0/2.5/3.0
8. L 2.7/3.2
9. L 3.2/3.7

Implant Insertion Tool



2.5mm (Long)
IT2.5

Prosthetic Drivers Hex



Long
AGM-400



Key Adaptor for handpiece
Ø 6.35 mm
HDP

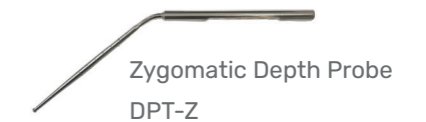
Surgical Screw Driver



Ø 6.35 mm
SDI



2.42mm



Zygomatic Depth Probe
DPT-Z

Patro Kit

The Patro Kit provides a complete and compact solution for one-piece implant procedures, including all the necessary tools for seamless implant insertion and neck bending.

Kit includes:



Ratchet wrench

RW



Ref. DPTRK

Drills

Description	Point Drill 1.5	Lance Drill 1.8	Cortical Drill 2.5	Cortical Drill 3.0
Ø / Height mm	Ø 1.5 mm	Ø 1.8 mm	Ø 2.5 mm	Ø 3.0 mm
Ref.	DM1.5	LD1.8	CD2.5	CD3.0

One-Piece Implant Insertion Tools

Description	Long	Short
mm	2.1 mm	2.1 mm
Ref.	ITSL	ITSLS

Additional Info: Used for insertion of One-Piece implant (Patro)
Material: Stainless Steel

Conical Connection Kit

The Alfa Gate Conical Connection Kit is engineered for the precision placement of NP, RP, and RC conical connection implants, providing a streamlined and high-performance surgical workflow.

Kit includes:

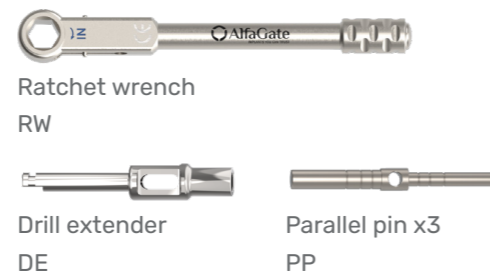
Implant Insertion Tools:



Prosthetic Drivers Hex 1.25mm



Tools:



Drills:



Drill stoppers:



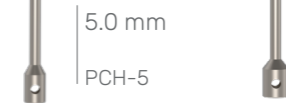
Conical Connection Kit

Ref. SKTM

Surgical Instruments & Tools

Tissue Punch

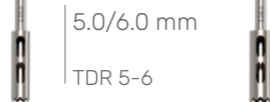
Ø mm	4.0 mm	5.0 mm
Ref.	PCH-4	PCH-5



Additional Info: Used for gingival punch and implant uncovering
Material: Stainless Steel

Trephine Drills

Ø mm	4.0/5.0 mm	5.0/6.0 mm
Ref.	TDR 4-5	TDR 5-6



Additional Info: Used for bone harvesting and implant removal
Material: Stainless Steel

Marking Drill and Drill Extender


Description	Marking drill	Lance Drill	Drill extender
Ø / Height mm	Ø 1.9 mm	Ø 1.5 mm	H :26mm
Ref.	DM	DM 1.5	DE



Additional Info: Extends drills by 17 mm for marking the cortical plate
Material: Stainless Steel

Standard Platform Implant Insertion Tools

Description	Long	Short
mm	2.42 mm	2.42 mm
Ref.	IT-2.5	ITS-2.5



Additional Info: Used for internal hex implant insertion 2.42 mm (Bioactive, TRIO, MAX, Porous)
Material: Stainless Steel

S-line Implant Insertion Tools


Description	Long	Short
mm	2.0 mm	2.0 mm
Ref.	IT-2	ITS-2



Additional Info: Used for internal hex implant insertion 2.0 mm (S-line)
Material: Stainless Steel

One-Piece Implant Insertion Tools

Description	Long	Short
mm	2.1 mm	2.1 mm
Ref.	ITSL	ITSLS



Additional Info: Used for insertion of One-Piece implant (Patro)
Material: Stainless Steel

M+ Conical Implant Insertion Tools

Description	NP - Long	NP - Short	RP - Long	RP - Short	Additional Info: Used for Conical Connection implant insertion
Ref.	IT-NP	ITS-NP	IT-RP	ITS-RP	Material: Stainless Steel



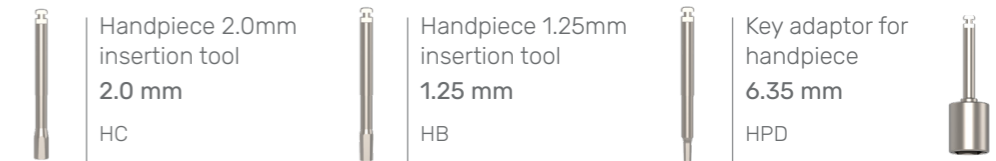
Trio RC Implant Insertion Tools

Description	RC - Long	RC - Short	Additional Info: Used for Conical Connection implant insertion
Ref.	IT-RC	ITS-RC	Material: Stainless Steel



Contra Angle Drivers

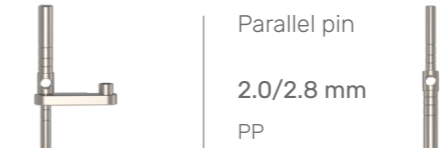
Description	Handpiece 2.42mm insertion tool	Handpiece 2.0mm insertion tool	Handpiece 1.25mm insertion tool	Key adaptor for handpiece
mm	2.42 mm	2.0 mm	1.25 mm	6.35 mm
Ref.	HA	HC	HB	HPD



Additional Info: Recommended insertion speed 15-25 RPM
Material: Stainless Steel

Parallel Pin and Spacer

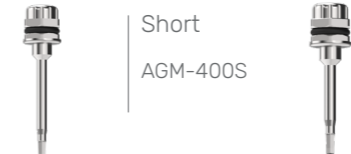
Description	Drilling spacer	Parallel pin	Used for parallel placement of implant
mm	2.42 mm	2.0/2.8 mm	
Ref.	SPR	PP	



Additional Info: Used for precise spacing and parallel placement of implant
Material: Stainless Steel

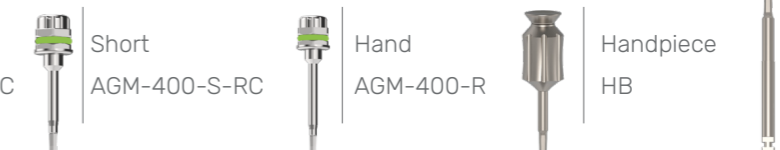
Prosthetics Hex Drivers 1.25mm SP Connection

Description	Long	Short	Additional Info: Compatible with all Alfa Gate prosthetics and screws
Ref.	AGM-400	AGM-400S	Material: Stainless Steel



Prosthetics Hex Drivers 1.25mm Conical Connections

Description	Long	Short	Hand	Handpiece
Ref.	AGM-400-RC	AGM-400-S-RC	AGM-400-R	HB



Insertion Driver for Implant Carrier


Description	Handpiece - Long	Handpiece - Short	Hand/Ratchet
mm	2.42 mm	2.42 mm	2.42 mm
Ref.	HAL	HAS	ITUS-2.5



Additional Info: Recommended insertion speed 15-25 RPM
Material: Stainless Steel

Surgical Instruments & Tools

Universal Torque Wrench 10-45 Ncm


Ø mm	6.35mm	
Ref.	TW	6.35mm



Additional Info: Allows the clinician to accurately apply the recommended preload torque for implant insertion and prosthetics

Material: Stainless Steel

Ratchet Wrench


Ø mm	6.35mm	
Ref.	RW	6.35mm



Additional Info: The ratchet wrench is used for implant placement and tightening

Material: Stainless Steel

Prosthetic Holder


Ø mm	2.42 mm	
Ref.	PH	2.42mm



Additional Info: Provides an easy way to shape and grind abutments

Material: Stainless Steel

Surgical Screw Driver

Ø mm	6.35mm	
Ref.	SDI	2.42mm



Additional Info: Manual implant driver allows tactile feel and controlled implant insertion

Material: Stainless Steel

Implant Depth Probe

Ø mm	2.0 mm
Ref.	DPT



Additional Info: Implant site depth probe.

Material: Stainless Steel



Surgical Drills

Dual Step Drill External Irrigation

Ø mm	2.0 mm	2.8 mm	3.2 mm	3.65 mm	4.2mm	4.6mm	5.2mm
Height mm	37.6 mm	37.6 mm	37.6 mm	37.6 mm	37.6 mm	37.6 mm	37.6 mm
Ref.	DP2	D2.8	D3.2	D3.65	D4.2	D4.6	D5.2

Material: Stainless Steel

Drill Replacement Kit

Ø mm	Marking Drill	2.0 mm	2.8 mm	3.2 mm	3.65 mm	4.2 mm
Ref.	DM	DB2	D2.8	D3.2	D3.65	D4.2

Material: Stainless Steel



Ref. DW-K

Dual Step Drills For Stoppers Sleeves

Ø mm	2.0 mm	2.8 mm	3.2 mm	3.65 mm	4.2 mm	4.6 mm	5.2 mm
Ref.	DB2	DB2.0-2.8	DB2.8-3.2	DB3.2-3.65	DB3.65-4.2	DB4.2-4.6	DB4.6-5.2

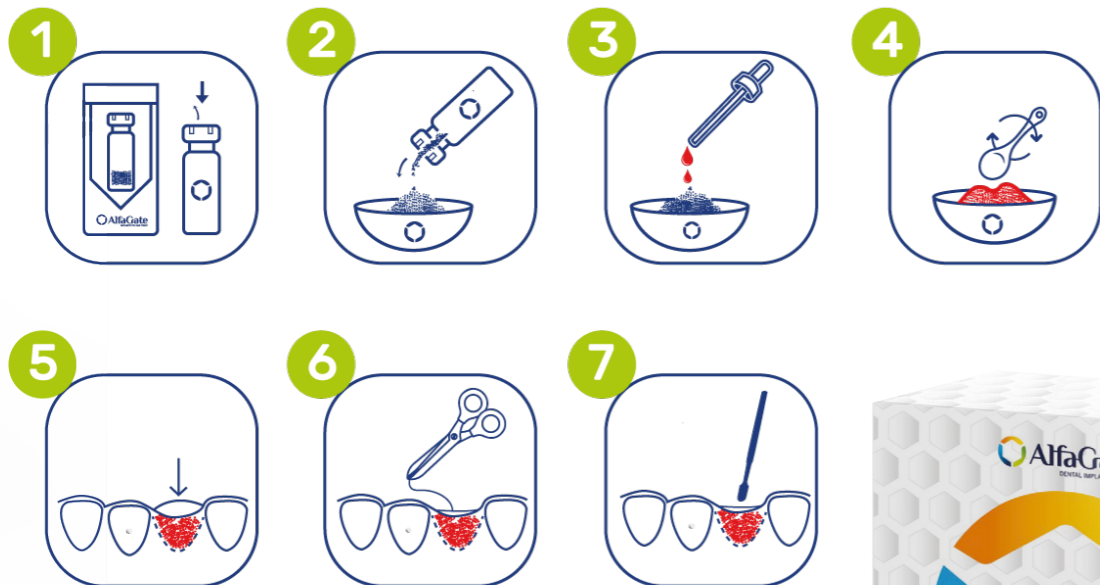
Material: Stainless Steel

The Alfa Gate Alfa Bone is a premium, fully synthetic biphasic bone substitute engineered for controlled resorption and superior mechanical stability. Composed of a balanced 75% Hydroxyapatite (HA) and 25% Beta-Tricalcium Phosphate (β-TCP) formula, it facilitates rapid new bone formation while effectively maintaining long-term graft volume.

Applications:

- Periodontal defects.
- Sinus floor elevation.
- Alveolar augmentations.
- Socket preservation.

Handling



Description	0.1-0.5 mm	0.5-1.0 mm	1.0-2.0 mm
mm	1g x 5	1g x 5	1g x 5
Ref.	ALBXXS-5	ALBS-5	ALBL-5

the Alfa Motor system utilizes an advanced electronic motor and sophisticated control algorithms to deliver exceptional smoothness. The sleek, ergonomic design features smooth edges for effortless sterilization, while the intuitive LCD display and haptic keys with audible feedback ensure rapid, accurate setup.

For maximum clinical efficiency, the system incorporates a front-access push button and dedicated compartment for seamless, one-handed tube replacement.

Surgical Handpieces (20:1)



Multi-Functional Foot Control (Ki-F20)



- A-Coolant (4 steps)
- B-Program (9 programs)
- C-F/R direction
- D-Speed foot control

The tube bracket swings out and stays in plain sight while the tube set is positioned between the two notches of the bracket. A broad variety of extensions and accessories are available.

Features

- Suitable for oral and maxillofacial surgery
- Maximum 70 Ncm torque (20:1)
- Speed range and torque level



Gear Ratio	1 : 1	1 : 2	20 : 1	32 : 1
RPM	600 - 40,000	1,200 - 80,000	20 - 2,000	20 - 1,200
NCM	-	-	5 - 70	5 - 90

- 9 Memory programs - optic(on/off), speed, gear ratio, coolant, forward/reverse, torque.
- LCD display

Ref.

- AGPHY | Alfa Motor Physio dispenser
- AGHP | Fiber optic hand piece
- AGPHT | Irrigation tube



Alfa Gate delivers a comprehensive prosthetic-driven planning solution, utilizing advanced Alfa Guide digital technology to ensure ideal dental restoration. Our elite team of oral surgeons and master technicians leverages decades of innovation to provide a fully guided surgical workflow from start to finish. By utilizing the complete Alfa Guide Package, clinicians are guaranteed a precise, predictable, and safe clinical execution for optimal implant placement.

Advantages of Alfa Guide

Digital Dentistry Done Right!

The surgical plan is done by experienced oral surgeons, Alfa Guide Team plans the virtual surgical procedure effortlessly and effectively.



Available Advisory

Alfa Guide Team offers consultancy for every case, with special guidance to perform the most ideal surgical procedure.

Surgical Guide You Can Trust

Perfect fit for precise implant placement guaranteeing successful procedure even in the most challenging cases. Varying diameters can be inserted in the surgical Guide, from 3mm to 5mm and up to 16mm in length.



Intuitive Kit Layout

The surgical kit makes the surgical procedure easier and more precise due to its straight forward and simple design; The comprehensive and single kit layout has insertion tools and drills for all implant platforms.



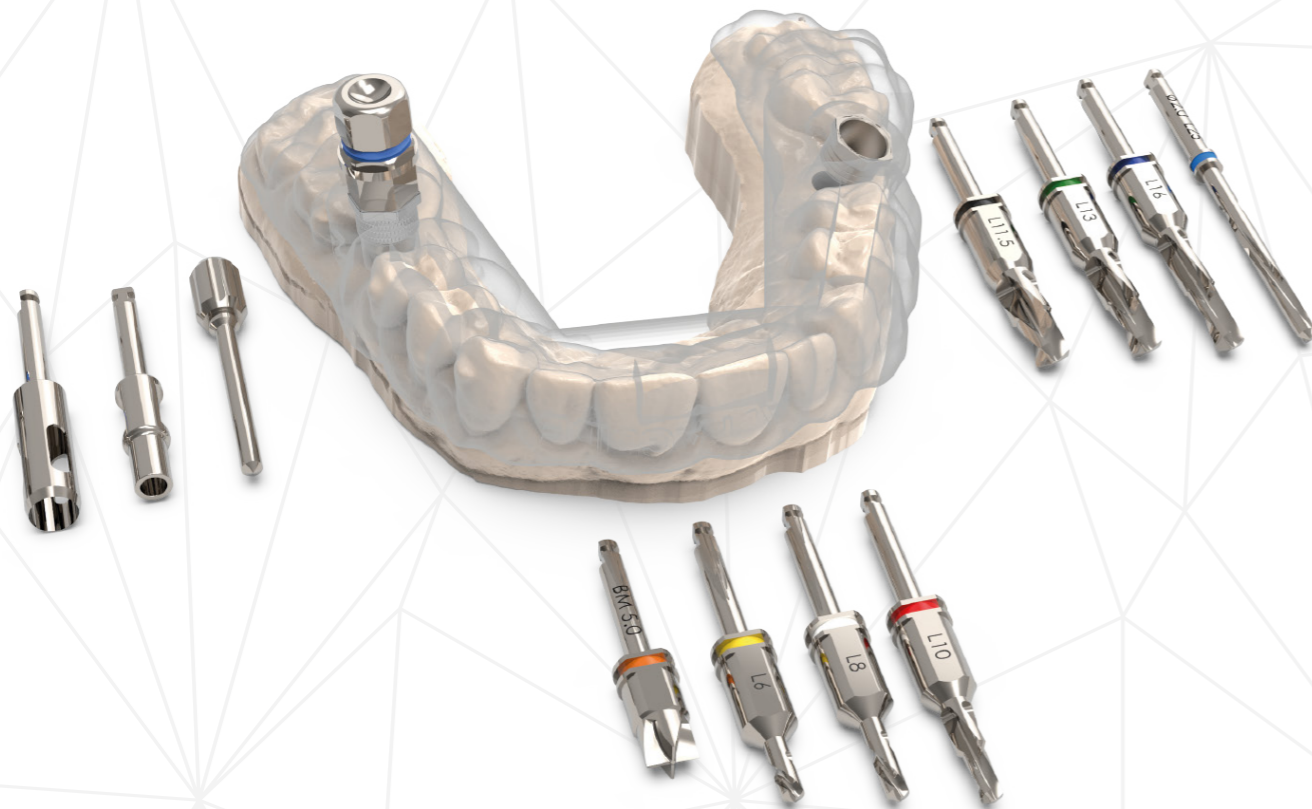
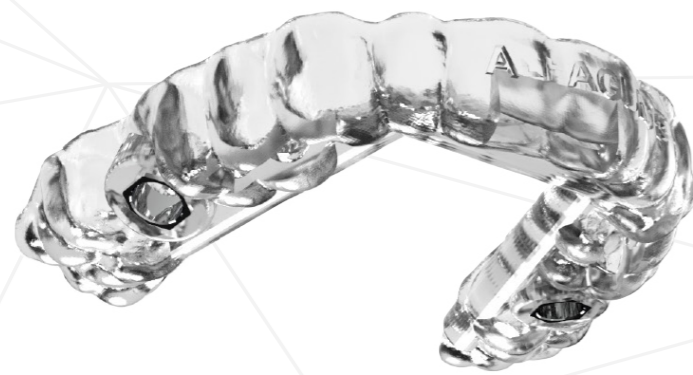
Innovative Sleeve Design

Titanium Sleeve with Hex indication for accurate final implant placement.



Alfa Guide Sleeves

Description	Full Sleeve	Narrow Sleeve	Open Sleeve	Anchor Sleeve	Pilot Drill Sleeve
mm	5mm	5mm	5mm	7mm	5mm
Ref.	SLV-F	SLV-N	SLV-O	SLV-A	SLV-P
Internal Ø	5mm	5mm	5mm	2mm	2mm



Alfa Guide Surgical Kit

The Alfa Guide Surgical Kit is a highly intuitive, comprehensive system containing every essential tool for seamless guided surgery. Featuring a streamlined color-coded drilling sequence and a single-layout configuration, the kit enables maximum efficiency and organization.

With specialized insertion keys included, clinicians can perform fully guided implant placement directly through the surgical guide, ensuring unparalleled accuracy and predictable clinical outcomes.

Kit Layout Categories

Site preparation

Tissue Punch Ø5mm



Fixation Drill Ø2- L19mm



Bone Mill



Pilot Drill Ø2- L25mm



Fixation Pin



Ø2.0mm



Ø2.8mm



Ø3.2mm



Ø3.65mm



Ø4.2mm



Drills Lengths:

L: 6 / 8 / 10 / 11.5 / 13 / 16mm

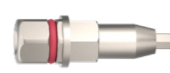
Standard Platform
ITG-2.5



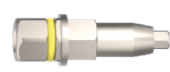
Standard Platform
ITG-2.5L



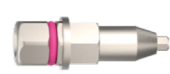
M+ Narrow Platform
ITG-NP



M+ Regular Platform
ITG-RP



S-line 3.0mm Narrow-
ITG-2



Implant Insertion

Hand Piece Adapter
HAS



Drill Extender
DE



Long prosthetics Key
AGM-400



Fixation Crestal Screw



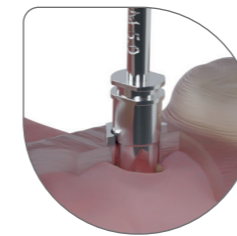
Short prosthetics Key
AGM-400-S



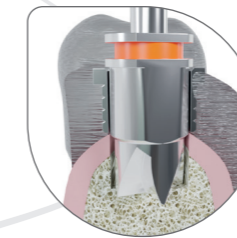
Torque Wrench
TW



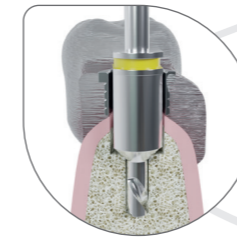
Advantages of Alfa Guide Surgical Kit



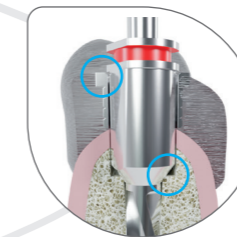
Tissue punch- for minimally invasive procedures for flapless surgery.



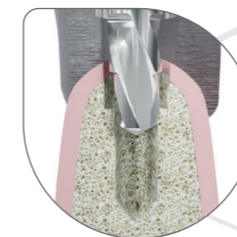
Bone mill- designed for flattening crestal bone and knife edges or narrow alveolar ridges. Moreover, it can be used to remove the soft tissue after the use of tissue punch.



Start drill creates the initial osteotomy for the implant to make the drilling sequence more efficient.



Double stopper mechanism as Guided drills are designed with this mechanism, the drill stops at the sleeve level and at the bone level which makes the drilling **safer**.

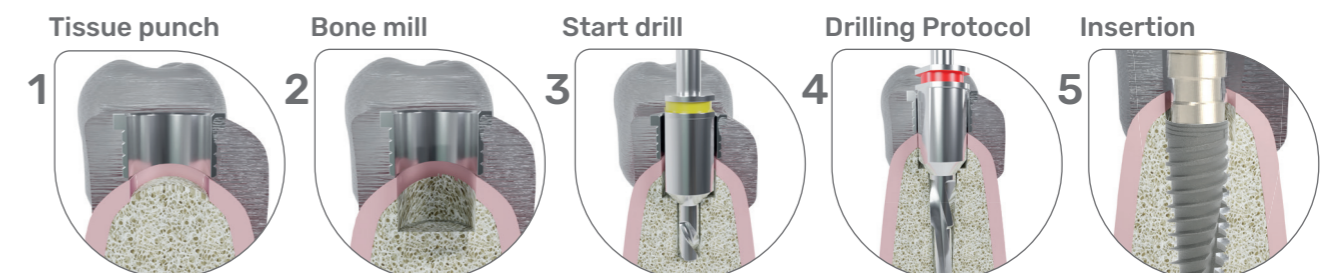


Dual-step drill and its unique protocol maintain a previous diameter at the tip of its drill, ensuring that they not only stabilize at the guide level but also at the drill tip, thus **avoiding potential operator errors**.



The two flat sides of the drill allow for **maximal cooling** during osteotomy which allows for maintaining irrigation thus **avoiding bone heating**.

Surgical Kit Workflow:

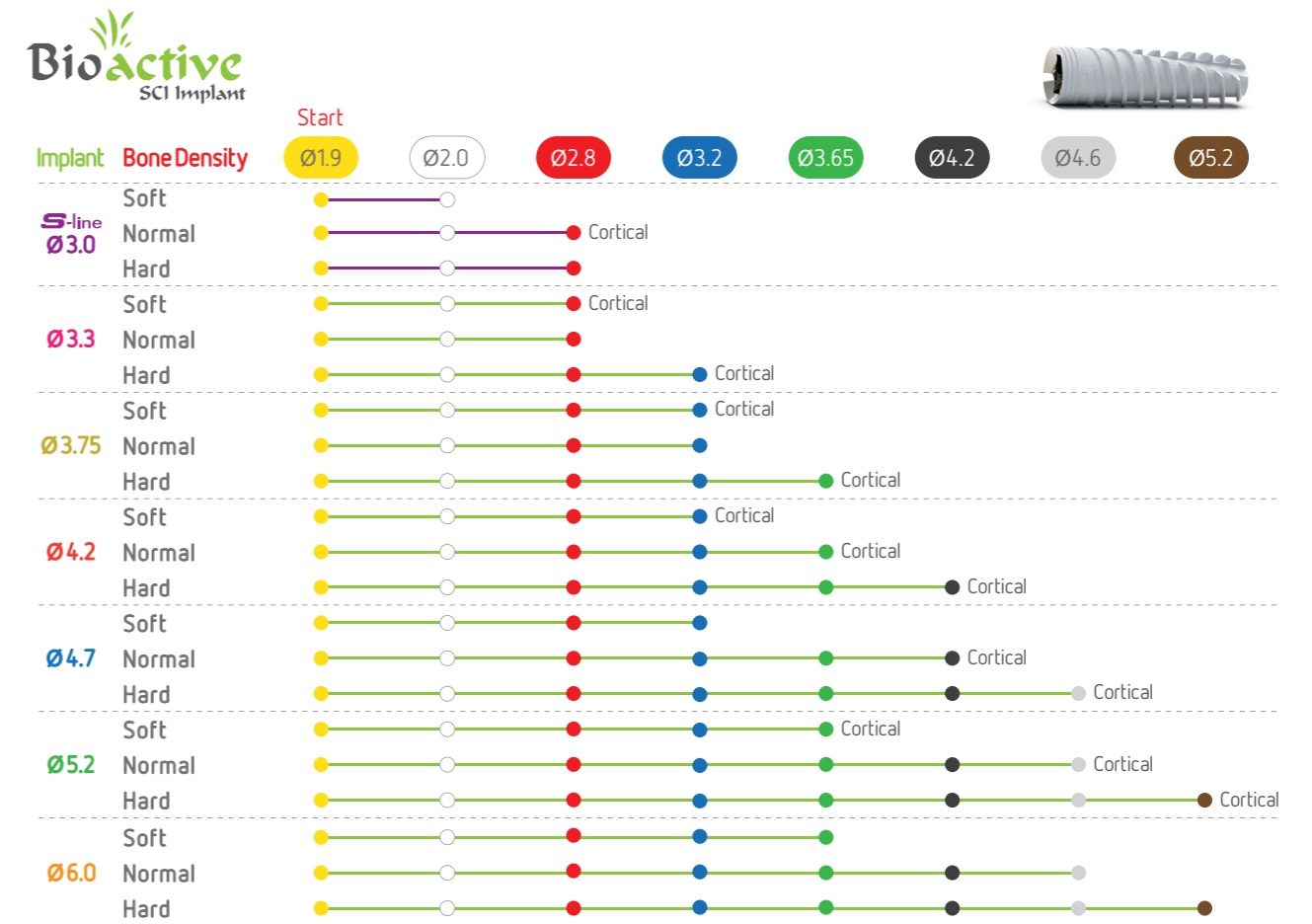


DRILLING PROTOCOL

Bioactive	95
Trio / Max	96
Porous / Patro	97
M+ / Trio	98
Drilling chart	99

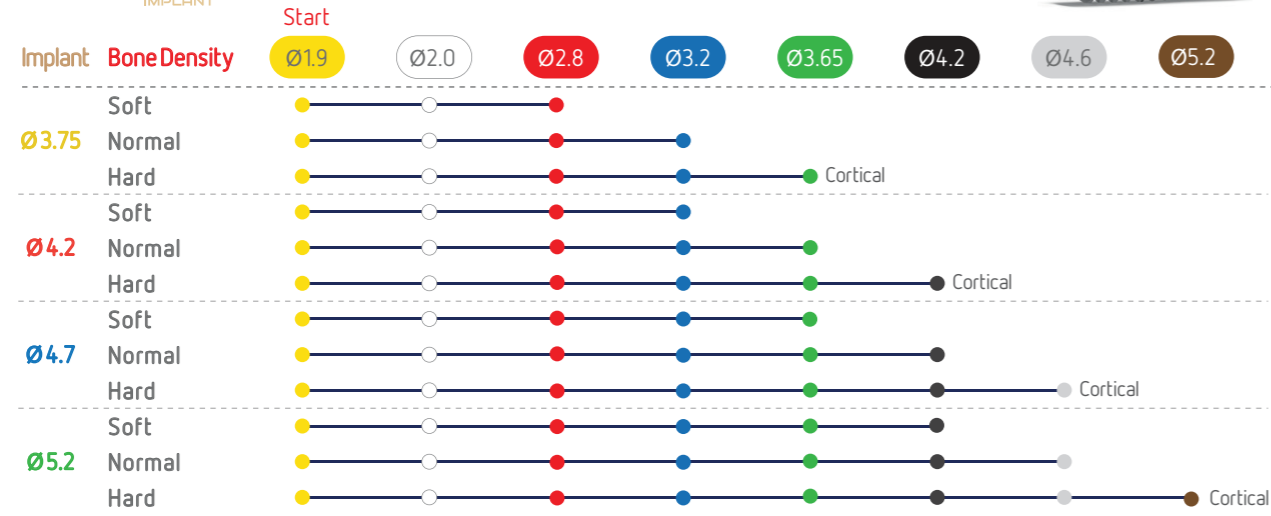


Drilling Protocols

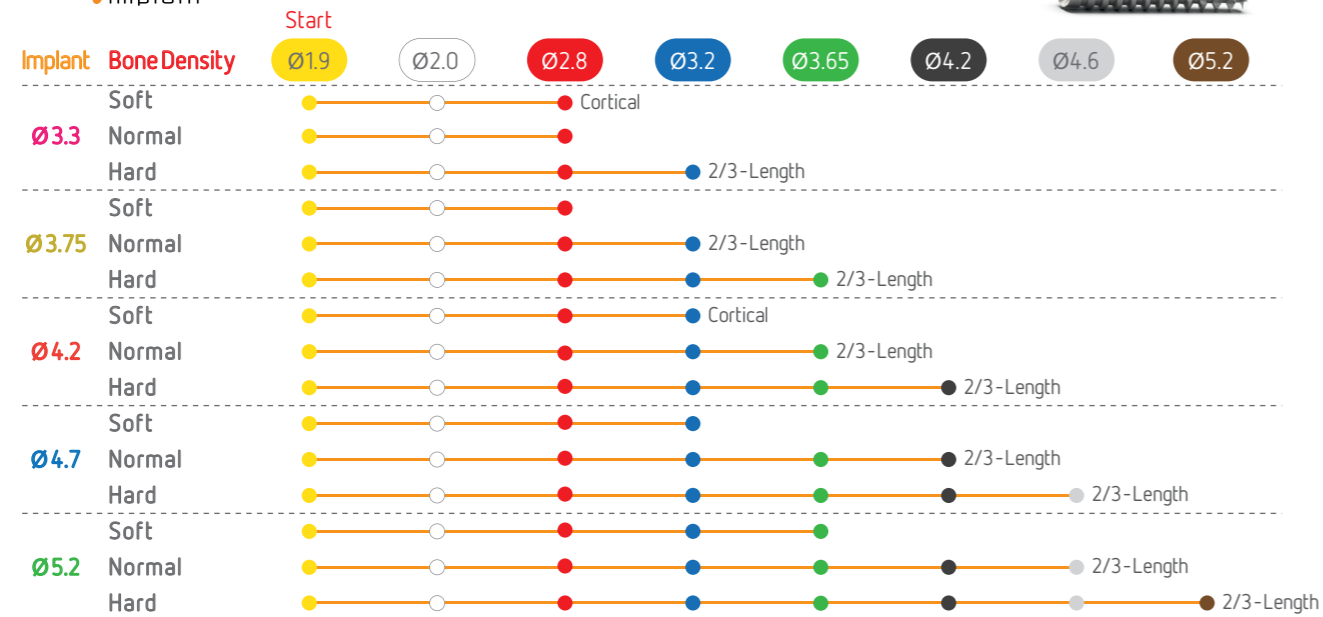


Drilling Protocols

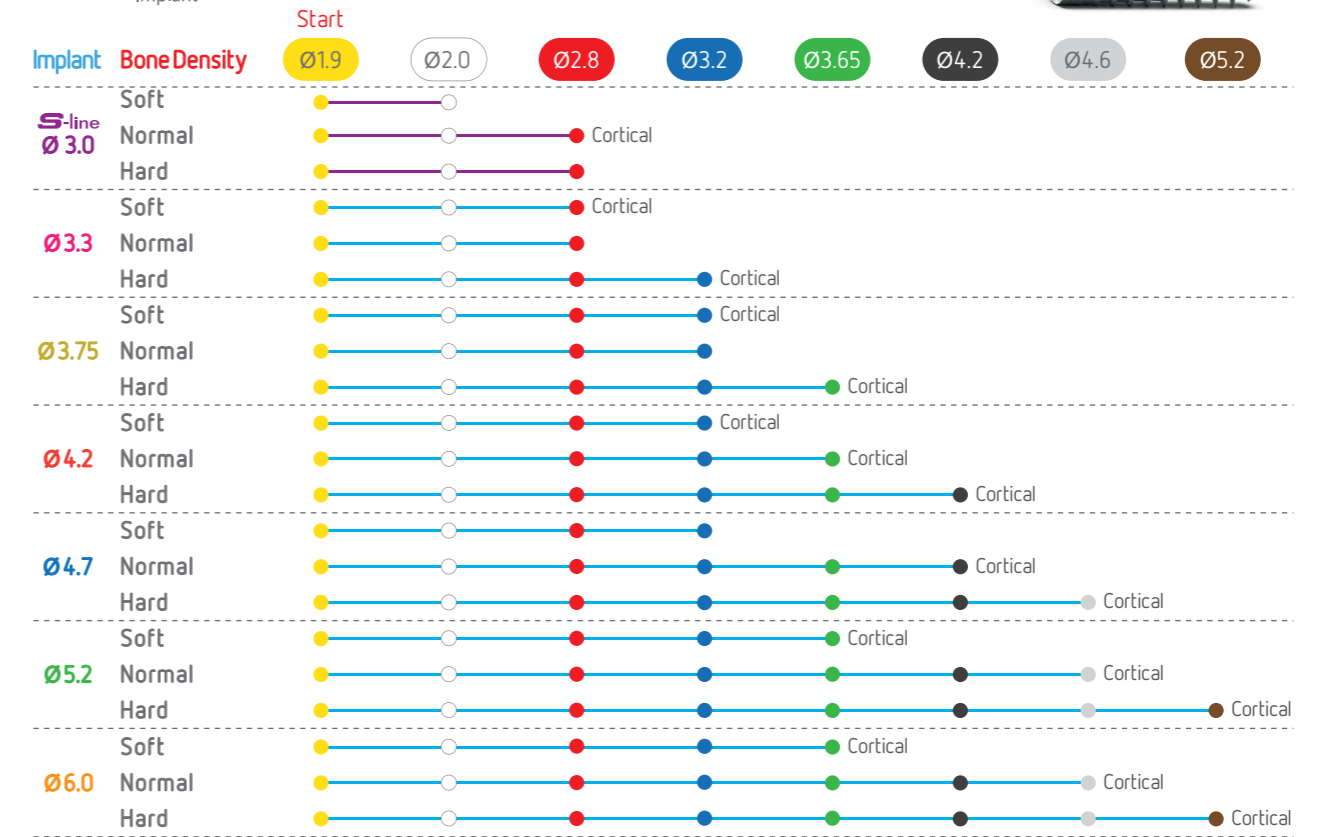
TRIO IMPLANT



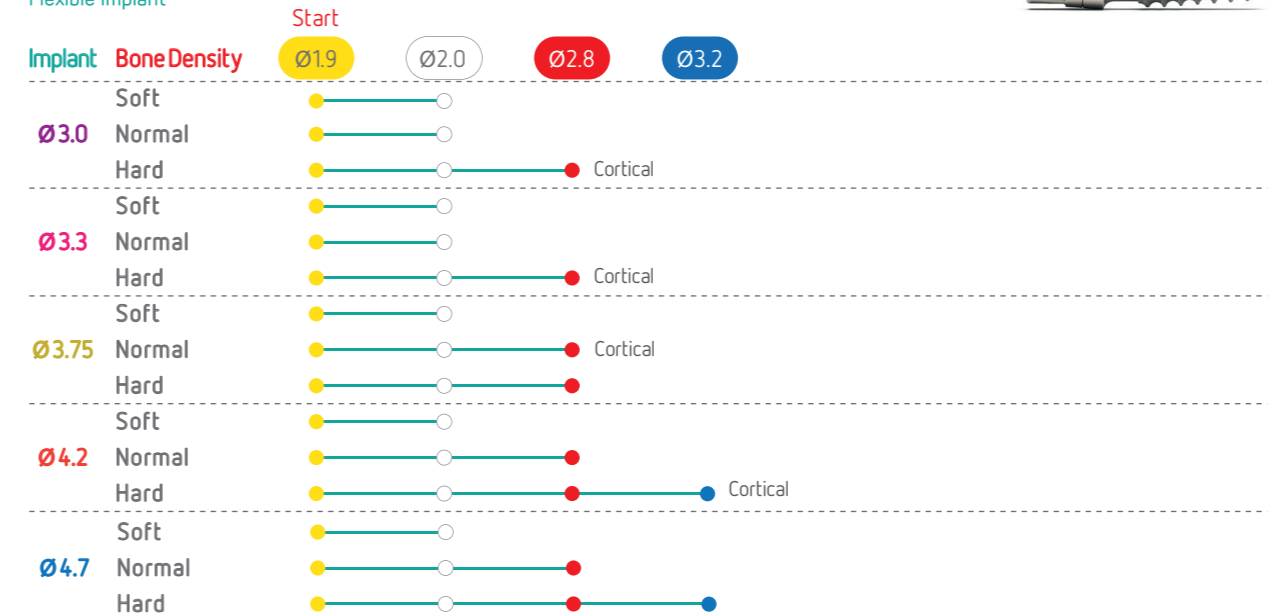
MAX IMPLANT



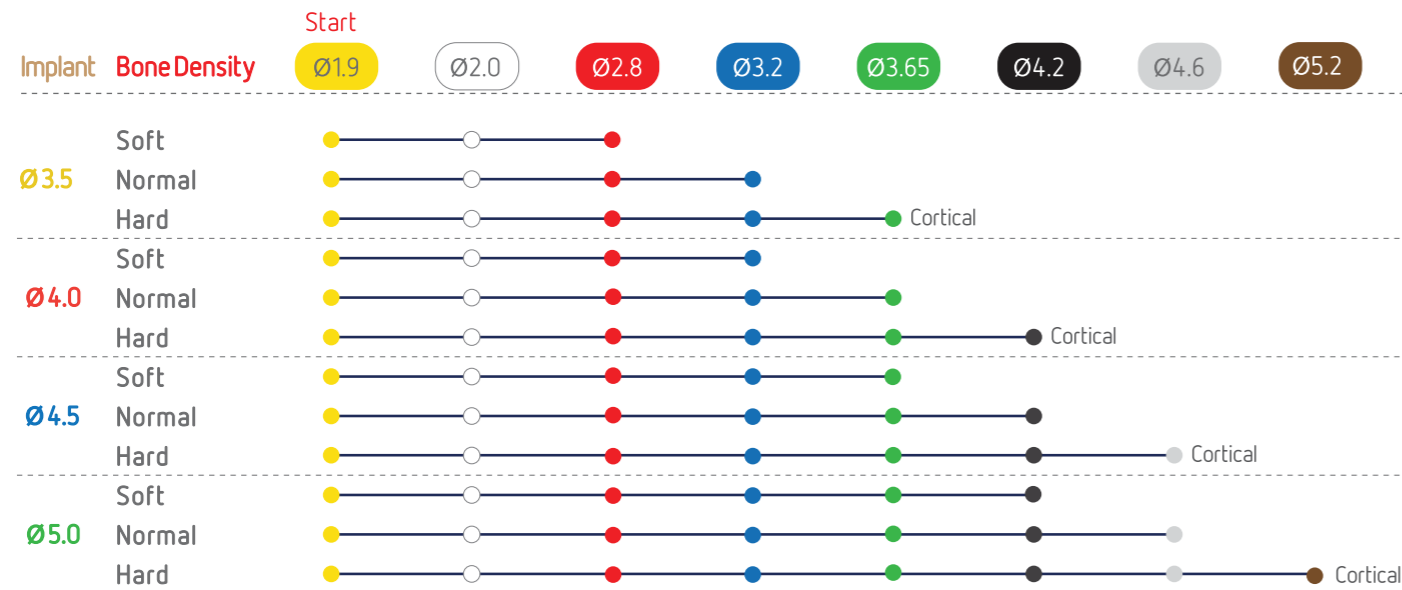
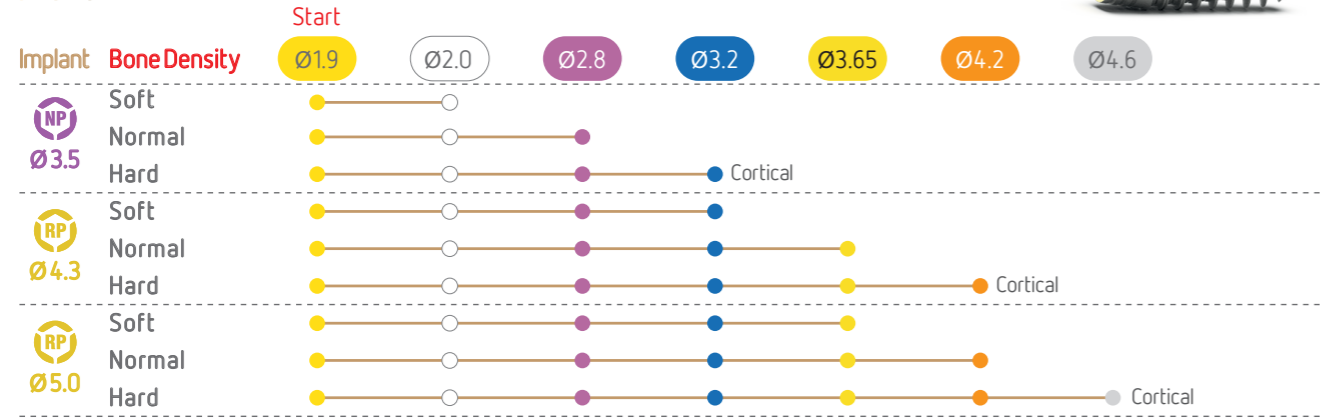
Porous Implant



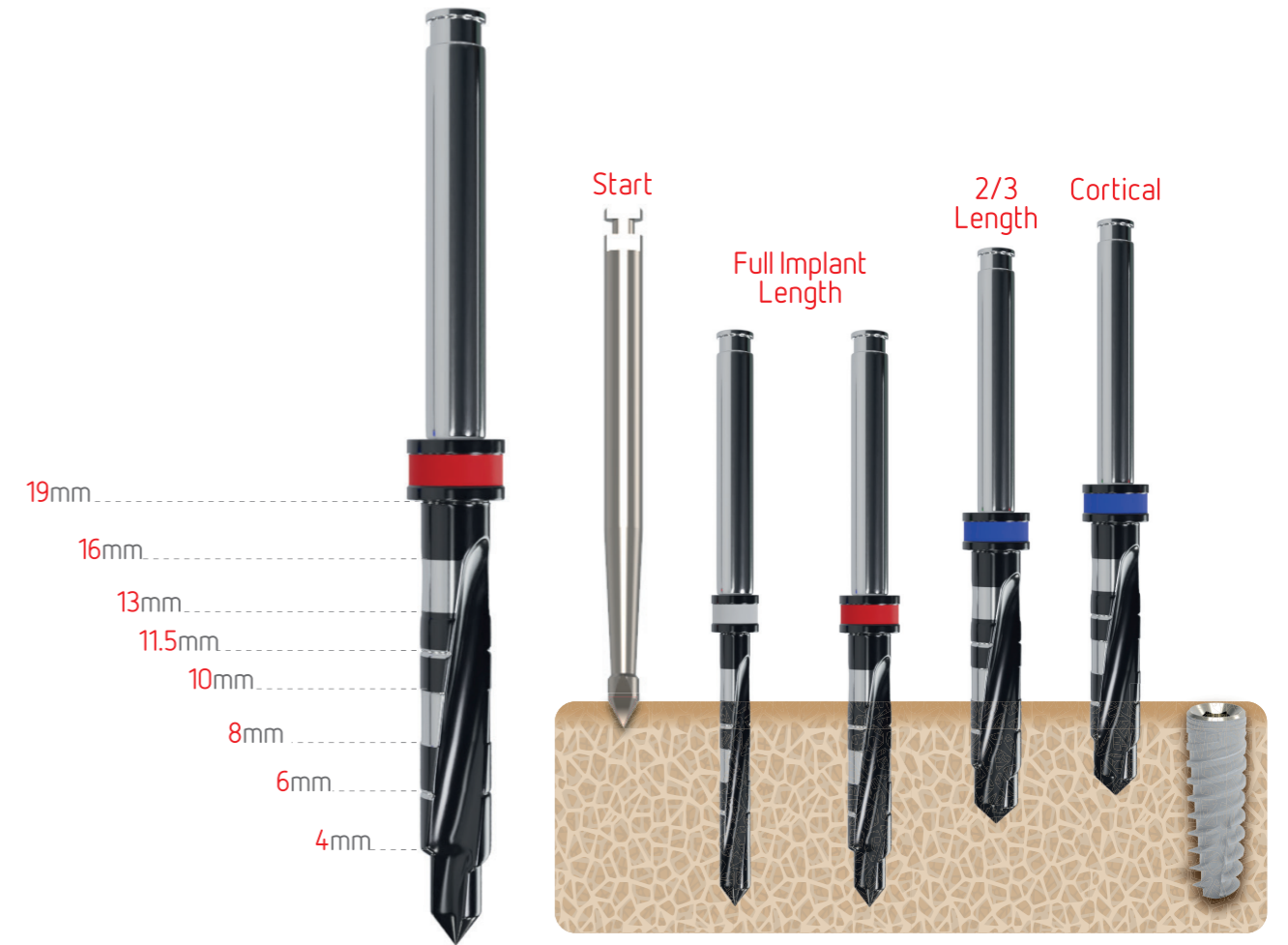
Patro Flexible Implant



Drilling Protocols



Drilling chart reference



- Drilling speed (RPM): 800-1200
- The drilling sequence is demonstrated with a 13mm implant.
- Alfa Gate drilling protocol is recommended for most clinical cases however, it cannot replace the surgeon's judgment and professional experience.

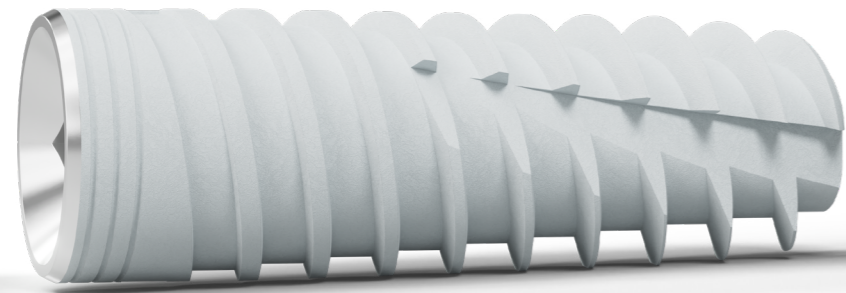
* Suggested Workflow for Ti-base compatible Sirona:

1. Scan intra orally or on your model.
2. For scanning, use Alfa Gate's sirona compatible Ti-Base, use sirona's scan body size L, (sirona's Ref. 6431329 for omnicam or 6431303 for bluecam).
3. On your CAD software library choose: internal hex platform, choose: Zimmer Tapered Screw Vent 3.5mm platform.
4. Follow sirona's standard instructions for CAD design of your restoration.
5. Use standard L blocks or equivalent for milling your abutment.
6. Cement Ti-Base to the milled and sintered block using the manufacturer's cementation instructions.

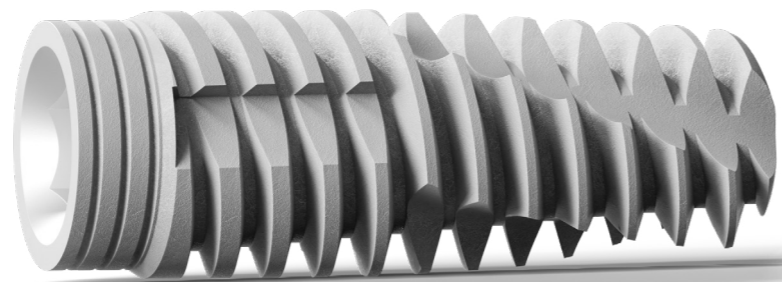


SCAN

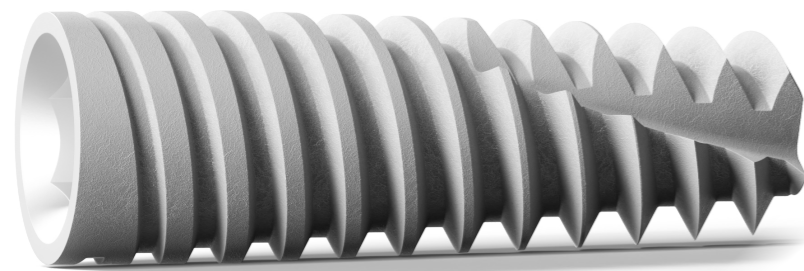
for more instructional videos.



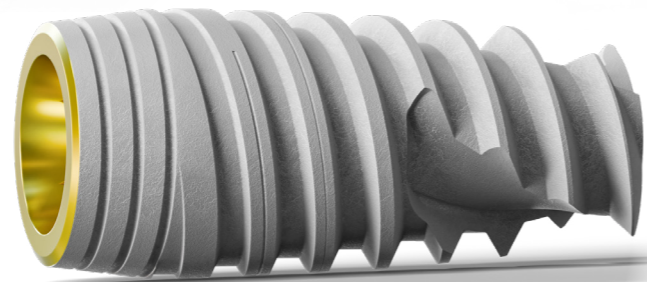
Bioactive
SCI Implant



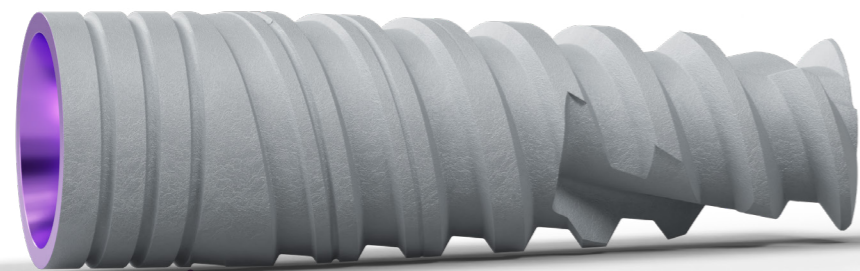
TRIO
IMPLANT



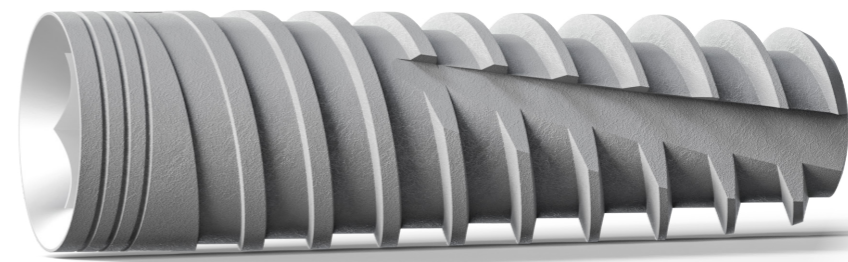
MAX
Implant



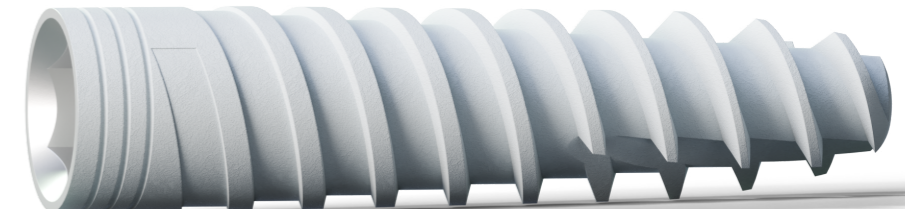
M+ Conical Connection
RP



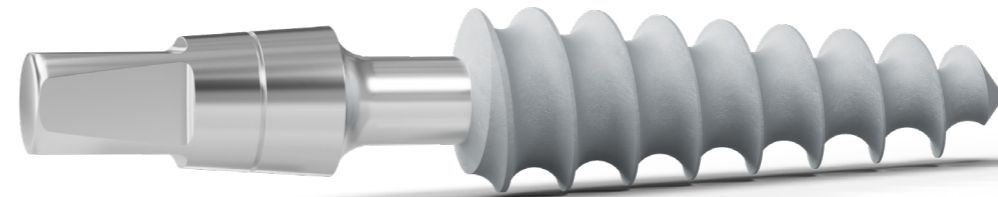
M+ Conical Connection
NP



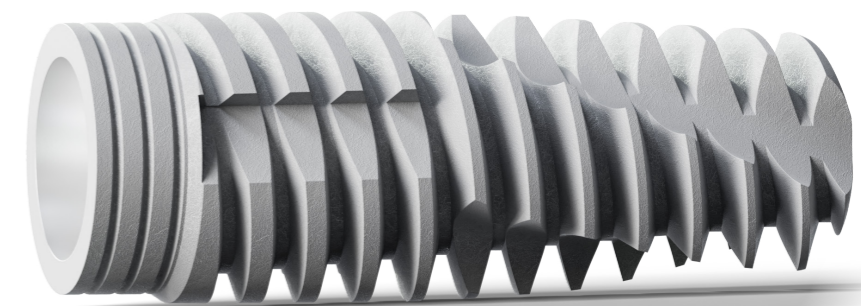
Porous
Implant



S-line



patro
Bendable Neck



TRIO
IMPLANT
RC



ZYGOMATIC



Alfa Gate adheres to the most stringent international standards,
complying with EN:ISO 13485:2003 and ISO 9001:2008

Product availability may vary between countries.



www.alfa-gate.com